

APPASO APS3001

APPASO APS3001 2-Handle High Arch Kitchen Faucet with Side Sprayer User Manual

1. INTRODUCTION

Thank you for choosing the APPASO APS3001 2-Handle High Arch Kitchen Faucet with Side Sprayer. This manual provides essential information for the safe and efficient installation, operation, and maintenance of your new faucet. Please read it thoroughly before installation and keep it for future reference.

This faucet features a high-arc spout for ample workspace, 360-degree spout swivel, and a matching pull-out side sprayer for enhanced functionality. It is equipped with two metal lever handles for precise control of water temperature and a premium ceramic cartridge designed for long-lasting, drip-free performance.

2. SAFETY INFORMATION

- Always turn off the main water supply before beginning any installation or maintenance.
- Wear safety glasses and gloves during installation.
- Ensure all connections are secure to prevent leaks. Do not overtighten plastic components.
- If you are unsure about any part of the installation, consult a qualified plumber.
- Keep small parts away from children.

3. PACKAGE CONTENTS

Verify that all items are included in your package before beginning installation:

- 2-handle Kitchen Faucet (Main unit)
- Pull-Out Side Sprayer
- Hot and Cold PEX Water Supply Lines
- Mounting Hardware (nuts, washers, gaskets)
- Installation Manual (this document)

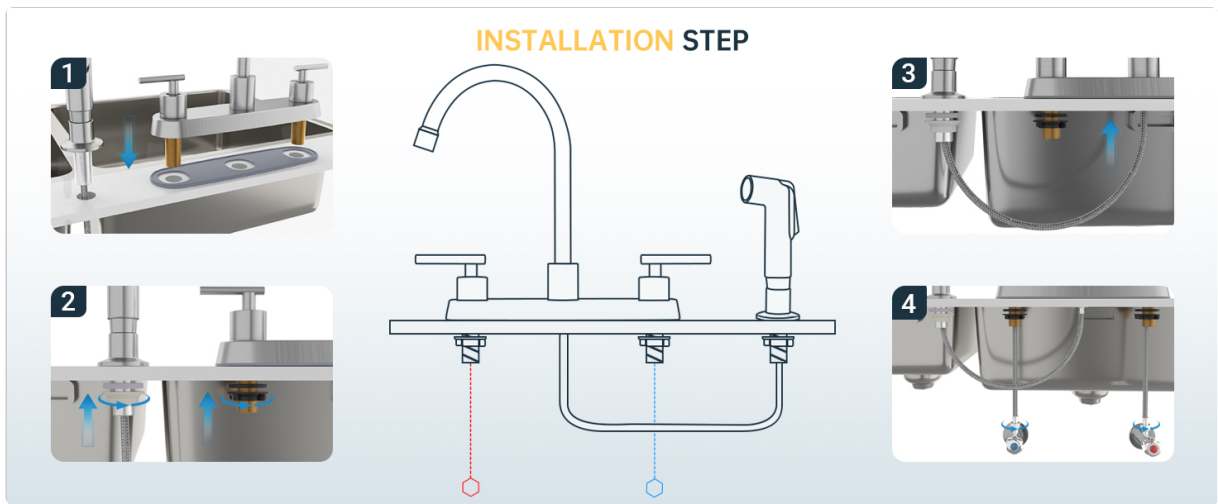


Figure 3.1: Exploded view of APPASO kitchen faucet components.

4. INSTALLATION GUIDE

This faucet is designed for 4-hole, 8-inch centerset installation. Follow these steps carefully:

4.1 Prepare the Sink

- Ensure the sink has four pre-drilled holes with an 8-inch centerset spacing.
- Clean the area around the faucet holes on the sink surface.

4.2 Install the Faucet Body

1. Place the rubber gasket (if provided separately) on the bottom of the new faucet base.
2. Insert the faucet body through the mounting holes in the sink.
3. From underneath the sink, secure the faucet using the provided locknuts and washers. Hand-tighten first, then use a basin wrench or channel locks for a snug fit. Do not overtighten.

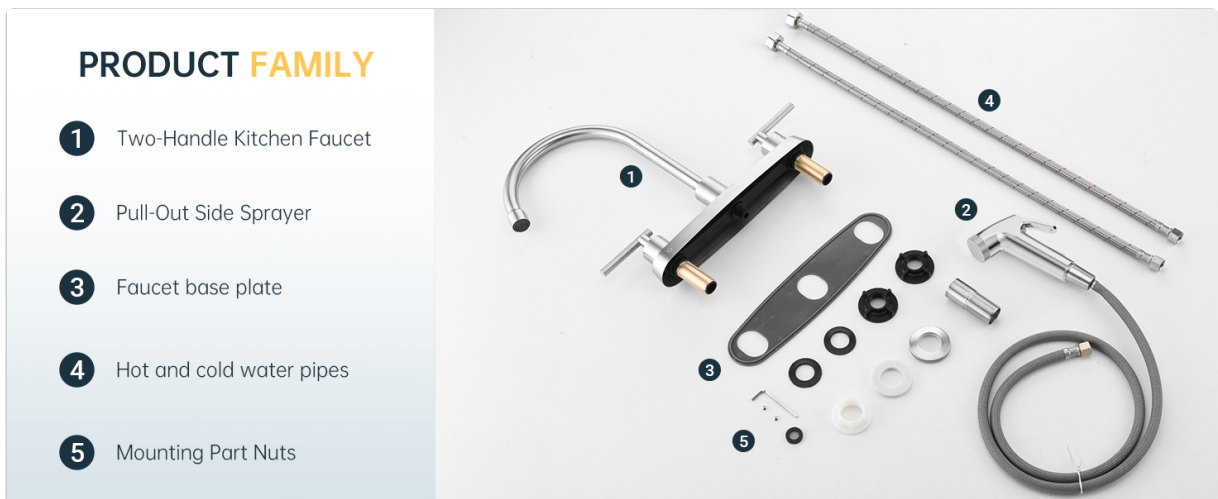


Figure 4.1: Faucet installation steps.

4.3 Connect Water Supply Lines

1. Connect the hot and cold PEX water supply lines to the corresponding inlets on the faucet body (typically marked red for hot, blue for cold).
2. Connect the other ends of the supply lines to your hot and cold water supply valves. Ensure a tight, leak-free connection.

4.4 Install Side Sprayer

1. Insert the side sprayer hose through the remaining hole in the sink deck.
2. Connect the sprayer hose to the designated port on the faucet body underneath the sink.
3. Secure the sprayer base with the provided mounting hardware.

Your browser does not support the video tag.

Video 4.1: Installation overview for APPASO Kitchen Faucet with Side Sprayer (Model 3001).

5. OPERATING INSTRUCTIONS

5.1 Water Flow and Temperature Control

- The faucet features two lever handles: one for hot water and one for cold water.
- Turn the left handle to activate hot water and the right handle for cold water.
- Adjust the handles to achieve the desired water temperature and flow rate.
- The high-arc spout swivels 360 degrees, allowing for flexible use across your sink.

Your browser does not support the video tag.

Video 5.1: Overview of APPASO Kitchen Faucet with Side Sprayer (Model APS3001) features, including water flow and sprayer function.

5.2 Using the Side Sprayer

- To use the side sprayer, ensure the main faucet handles are in the OFF position.
- Press the lever on the side sprayer to activate water flow. Release the lever to stop the flow.
- The side sprayer is ideal for rinsing dishes, cleaning the sink, or washing vegetables.



Figure 5.1: Demonstrating the effective use of the side sprayer for cleaning.

6. MAINTENANCE

Regular maintenance will ensure the longevity and optimal performance of your APPASO faucet.

6.1 Cleaning the Faucet

- Clean the faucet regularly with a soft cloth and mild soap.
- Avoid abrasive cleaners, harsh chemicals, or scouring pads, as these can damage the brushed nickel finish.
- Wipe the faucet dry after each use to prevent water spots and mineral buildup.

6.2 Cleaning the Aerator

- If water flow becomes restricted, the aerator may need cleaning.
- Unscrew the aerator from the tip of the spout.
- Rinse any debris from the aerator screen under running water. For stubborn mineral deposits, soak the aerator in a 50/50 solution of white vinegar and water.
- Reattach the aerator to the spout, ensuring it is securely tightened.



Figure 6.1: Removable aerator for easy cleaning and maintenance.

6.3 Ceramic Cartridge

The premium ceramic cartridge is designed for durability and typically does not require regular maintenance. If you experience persistent dripping or difficulty controlling water flow, the cartridge may need replacement. Contact customer support for assistance.

PASSED 500,000+ CYCLE TESTING

Ceramic combination Material

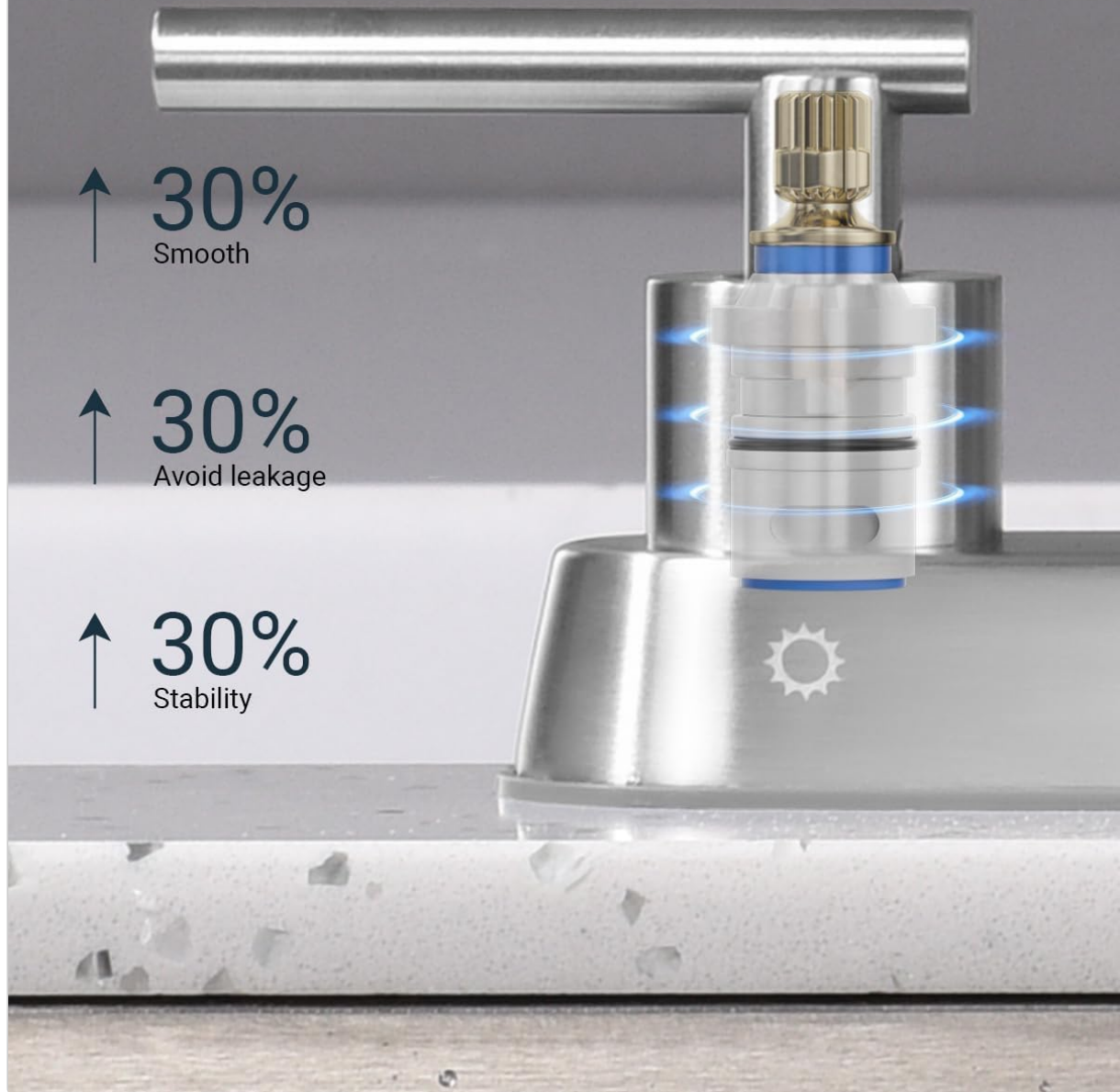


Figure 6.2: Illustration of the ceramic cartridge, tested for over 500,000 cycles.

7. TROUBLESHOOTING

Problem	Possible Cause	Solution
Low Water Flow	Clogged aerator; partially closed supply valves.	Clean the aerator (see Section 6.2); ensure supply valves are fully open.
Leaking from Faucet Base	Loose mounting nuts; damaged gasket.	Tighten mounting nuts (do not overtighten); inspect and replace gasket if damaged.

Problem	Possible Cause	Solution
Dripping from Spout	Worn ceramic cartridge.	Replace the ceramic cartridge. Contact customer support for replacement parts.
Side Sprayer Not Working	Main faucet handles not fully closed; kinked hose; clogged sprayer head.	Ensure main faucet handles are off; check hose for kinks; clean sprayer head.

8. SPECIFICATIONS

Feature	Detail
Brand	APPASO
Model Number	APS3001
Mounting Type	4-hole, 8-inch centerset
Finish Type	Brushed Nickel
Material	Stainless Steel
Number of Handles	2 (Lever Type)
Flow Rate	1.8 Gallons Per Minute
Spout Height	10.25 Inches
Spout Reach	7 Inches
Hose Length (Side Sprayer)	27 Inches
Special Features	360° Swivel Spout, High-end Ceramic Cartridge, Spot-free finish

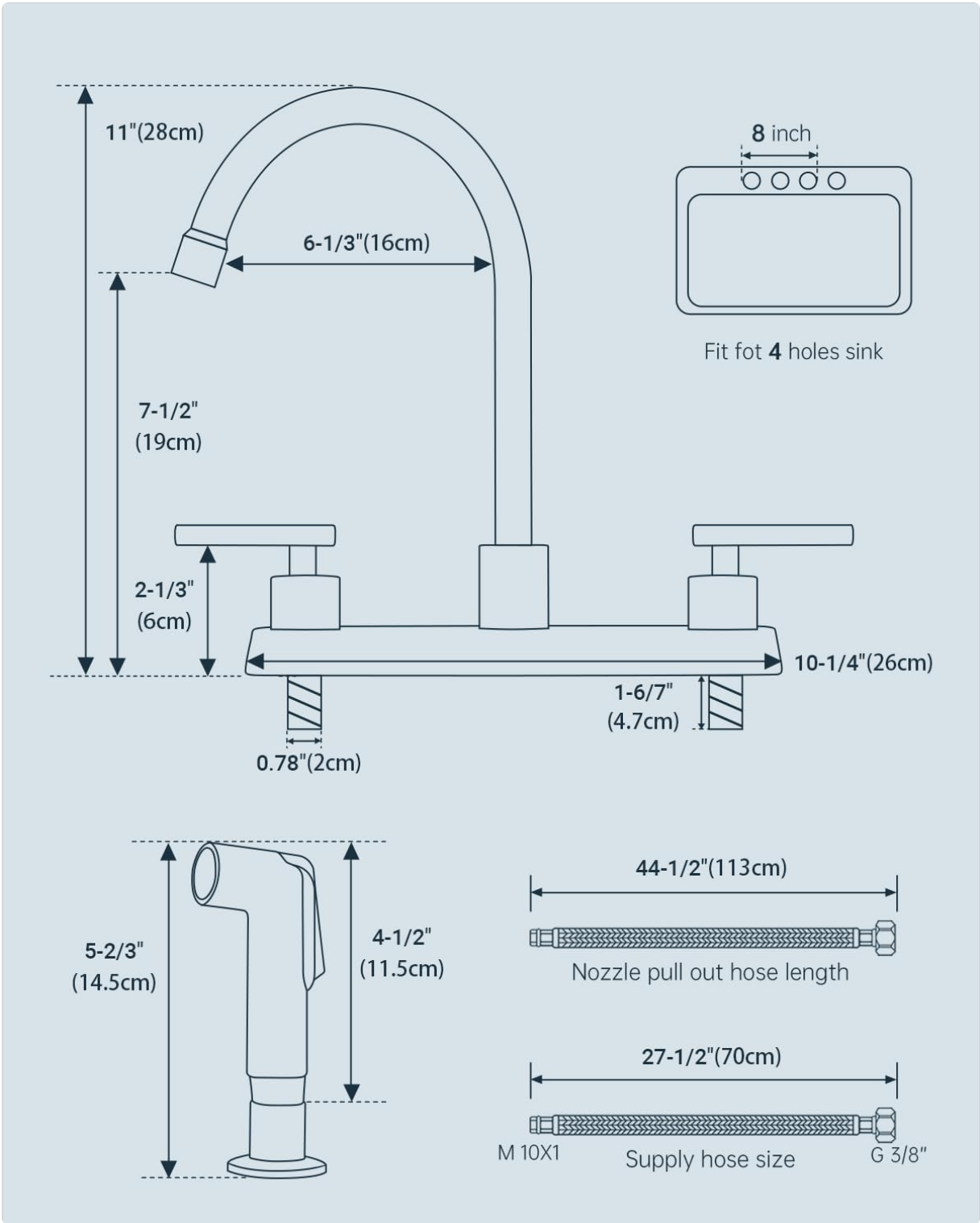


Figure 8.1: Product dimensions and hose lengths.

SUPERIOR HEAT-RESISTANT PEX HOSE



Figure 8.2: Construction details of the PEX supply hose.

9. WARRANTY AND SUPPORT

APPASO products are manufactured to high-quality standards. For warranty information, please refer to the warranty card included in your product packaging or visit the official APPASO website. If you have any questions, require replacement parts, or need assistance with installation or troubleshooting, please contact APPASO customer support. Our team is dedicated to providing a satisfactory solution within 24 hours.

Contact Information:

Email: [Refer to product packaging or official website]

Website: [APPASO Store on Amazon](#)

