

ciciglow ciciglowt8e1rvu5wy-12

ciciglow Manual Lawn Edger Instruction Manual

Model: ciciglowt8e1rvu5wy-12 | Brand: ciciglow

INTRODUCTION

The ciciglow Manual Lawn Edger is designed to provide precise and effortless trimming of grass along sidewalks, driveways, and flower beds. Its single-wheel design and sharp serrated blades ensure a clean and tidy finish for your garden landscape. This manual provides essential information for assembly, operation, maintenance, and troubleshooting to ensure optimal performance and longevity of your tool.



Figure 1: The ciciglow Manual Lawn Edger with its long handle and rotary blade assembly.

SAFETY INFORMATION

- The edger features sharp blades. Keep out of reach of children and pets.
- Avoid direct contact with the cutting edge during assembly, operation, and maintenance.
- Wear appropriate protective gear, such as gloves, during assembly and use.
- Ensure all handle sections are securely tightened before use.

PACKAGE CONTENTS

Verify that all components are present in the package:

- 1 x Edging Head
- 3 or 4 x Grip Handle sections (depending on model variant)
- 2 x Screw
- 2 x Nut
- 2 x Wrench



Figure 2: The edging head, grip handles, screws, nuts, and wrenches included in the package.

SETUP

Follow these steps to assemble your ciciglow Manual Lawn Edger:

1. **Install the Edging Head:** Align the holes on the edging head with the first handle section. Insert the provided screws and secure them with the nuts using the wrenches.
2. **Connect Handle Sections:** Rotate and tighten the connecting rods of the handle sections together. Ensure each section is firmly screwed into the next to prevent loosening during use.
3. **Adjust Length:** The handle consists of multiple sections, allowing you to adjust the overall length to a comfortable height for operation.

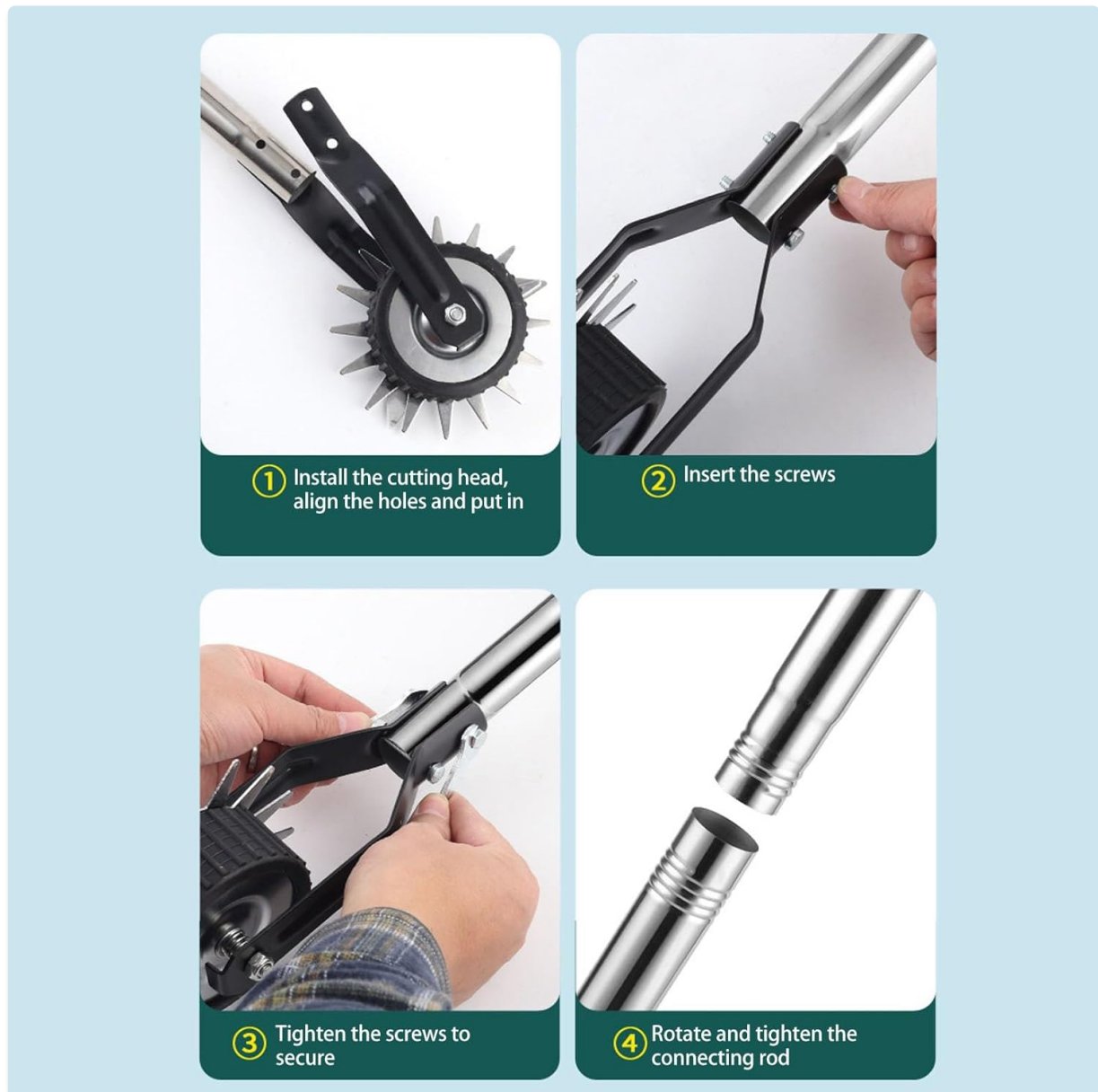


Figure 3: Visual instructions demonstrating how to install the cutting head, insert screws, tighten them, and connect the handle rods.

Assembly Demonstration Video

Your browser does not support the video tag.

Video 1: This video demonstrates the assembly process and effective use of a 58-inch rotary turf edger for maintaining clean edges along sidewalks and yards.

Your browser does not support the video tag.

Video 2: A demonstration of the Walensee Wheel Rotary Edger, highlighting its adjustable handle and ease of use for precise lawn edging.

OPERATING INSTRUCTIONS

The ciciglow Manual Lawn Edger is designed for straightforward operation:

1. **Position the Edger:** Place the edger's wheel on the hard surface (sidewalk, driveway, patio) and the blades against the grass edge you wish to trim.
2. **Apply Downward Pressure:** Gently push the edger forward, applying slight downward pressure. The serrated blades will rotate and cut the overgrown grass.
3. **Maintain a Steady Pace:** Move along the edge at a consistent speed to achieve a uniform cut. For very thick or overgrown areas, a second pass may be beneficial.
4. **Clear Debris:** After edging, use a broom or leaf blower to clear any cut grass from the hard surface.



Figure 4: The edger's wheel and blades positioned to trim grass precisely along a paved edge.

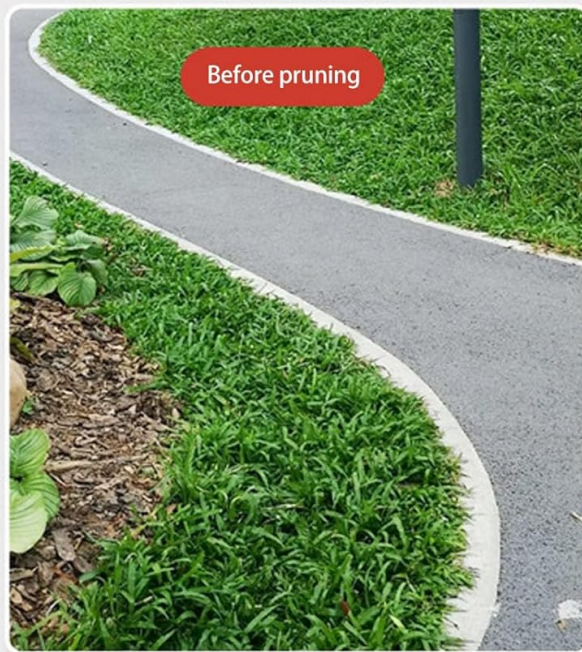


Figure 5: A visual comparison of a lawn edge before and after using the edger, alongside images of the tool actively trimming grass.



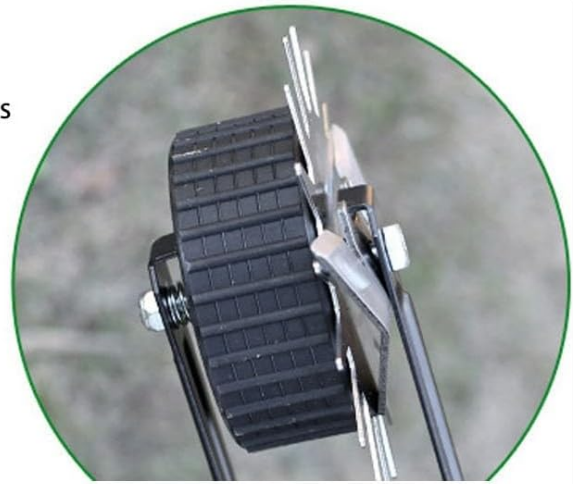
Figure 6: Multiple perspectives of the edger effectively cutting grass along a paved surface.

MAINTENANCE

Regular maintenance ensures the longevity and effectiveness of your edger:

- **Cleaning:** After each use, remove any grass or debris that may have accumulated between the blades and the wheel. This prevents clogging and maintains cutting efficiency.
- **Blade Tension Adjustment:** If the blades feel too tight (causing rotation resistance) or too loose (resulting in poor cutting), adjust the tension using the included wrenches. Hold the bolt head with one wrench and turn the nut clockwise to reduce the gap (tighten) or counter-clockwise to increase the gap (loosen).
- **Storage:** For compact storage, the handle can be disassembled into its sections. Store the edger in a dry place to prevent rust.

High strength alloy steel cutter head
Sharp cutting edge, smoother cutting, smoother cuts



Rubber wheels for smoother pushing

Figure 7: Detail of the edger's sharp alloy steel blades and the rubber wheel designed for smooth operation.

Blade Tension Adjustment Video

Your browser does not support the video tag.

Video 3: This video illustrates how to easily adjust the blade tension on the Colwelt Wheel Rotary Edger using the included tool, ensuring optimal cutting performance.

TROUBLESHOOTING

- **Issue:** Grass gets stuck between the blades and wheel.
Solution: Regularly clean the blades and wheel during and after use to prevent buildup.
- **Issue:** Handle sections become loose during operation.
Solution: Ensure all handle sections are tightly screwed together before starting. Re-tighten if necessary.
- **Issue:** Edger is difficult to push or cuts poorly.

Solution: Check blade tension. If blades are too tight, they may cause resistance; if too loose, they may not cut effectively. Adjust tension as described in the Maintenance section.

SPECIFICATIONS

Feature	Specification
Item Type	Manual Lawn Edger
Material	Manganese steel, stainless steel
Edging Size	Approx. 26x4.5x15cm/10.2x1.8x5.9in
Item Weight	3.99 pounds
Package Dimensions	18.9 x 7.87 x 7.48 inches
Model Number	ciciglowt8e1rvu5wy-12
Batteries Required	No

WARRANTY & SUPPORT

For any questions, concerns, or support regarding your ciciglow Manual Lawn Edger, please refer to the product packaging or contact the manufacturer directly. Specific warranty details may vary and are typically provided with your purchase documentation.