

## Projecta PJ-AC008-2

# Projecta Charge N' Maintain 12V Battery Charger

Model: PJ-AC008-2 | Brand: Projecta

## PRODUCT OVERVIEW

The new and improved Projecta Charge N' Maintain 12V Battery Charger is perfectly suited for DIY enthusiasts and professionals alike. Its no-fuss operation means you can simply connect it to your battery, and the charger will automatically manage the charging process. This smart charger range offers a safe and practical method for charging and maintaining all your automotive and marine batteries. The advanced technology ensures accurate and efficient charging through switchable stages, promoting longer battery life and better performance over extended periods. The charger communicates with the battery to ascertain its charge level, balancing its load and optimizing charging methods to prevent overcharging.

## Key Features

- **Fully Automatic:** Simply connect and forget without the risk of overcharging.
- **Four Stages:** Once connected, the charger will manage the entire process, whether charging or maintaining the battery to keep it ready for use.
- **Spark-Free and Polarity Protected:** Designed for safe use, even while the battery is still in the vehicle.
- **Fused Wiring Harness:** Includes a quick-connect fused wiring harness for permanent installation (BCWH).
- **Complete Kit:** Comes with the harness, battery clamps, and a 9.84 ft (3m) extension cable.

## SETUP AND CONNECTION

Before connecting the charger, ensure your vehicle is turned off and the ignition is in the 'off' position. Always connect the charger in a well-ventilated area.

1. **Identify Battery Terminals:** Locate the positive (+) and negative (-) terminals on your battery. The positive terminal is usually marked with a plus sign and is larger, while the negative terminal is marked with a minus sign.
2. **Choose Connection Method:** The Projecta charger comes with both battery clamps and a fused wiring harness. Choose the method most suitable for your application.
3. **Connect Positive:** Attach the red (positive) clamp or ring terminal from the charger to the positive (+) battery terminal.

4. **Connect Negative:** Attach the black (negative) clamp or ring terminal from the charger to the negative (-) battery terminal. For safety, if connecting to a battery installed in a vehicle, connect the negative clamp to the vehicle chassis away from the battery and fuel line.
5. **Plug in Charger:** Once the battery connections are secure, plug the charger into a standard AC power outlet. The charger is designed to be spark-free and polarity protected, minimizing risks during connection.



Image: The Projecta charger connected to a car battery, demonstrating proper terminal attachment.





Image: The fused wiring harness, providing a permanent installation option for the charger.



Image: The red (positive) and black (negative) battery clamps included with the charger.

## OPERATING INSTRUCTIONS

The Projecta Charge N' Maintain charger is fully automatic, simplifying the charging process. Once connected and powered on, it will automatically detect the battery type and condition, then proceed through its four charging stages.

## Automatic Charging Stages

- **Stage 1: Desulphation** (if needed) - Recovers sulphated batteries.
- **Stage 2: Bulk Charge** - Charges the battery to approximately 80% capacity.
- **Stage 3: Absorption Charge** - Charges the battery to 100% capacity at a decreasing current.
- **Stage 4: Float/Maintenance Charge** - Maintains the battery at full charge, preventing self-discharge and ensuring readiness.

The charger's display will show the charging status and battery voltage. There is no risk of overcharging, making it safe to leave connected for extended periods for maintenance.

Video: An official product video demonstrating the features and ease of use of the Projecta 'Charge N' Maintain' Automatic Battery Chargers.

## BATTERY MAINTENANCE

The 'Maintain' function of this charger is crucial for extending battery life, especially for infrequently used vehicles or equipment. Once the battery is fully charged, the charger automatically switches to a maintenance mode, providing a small, continuous current to counteract self-discharge. This ensures your battery remains at optimal charge and ready for use whenever needed, preventing sulfation and prolonging its overall lifespan.

## TROUBLESHOOTING

If the charger is not operating as expected, please check the following:

- **No Power:** Ensure the charger is securely plugged into a live AC power outlet. Check the power outlet with another appliance.
- **Incorrect Connection:** Verify that the positive (red) and negative (black) clamps/terminals are correctly connected to the corresponding battery terminals. The charger has polarity protection, but incorrect connection will prevent charging.
- **Battery Condition:** If the battery is severely discharged or damaged, the charger may not initiate charging. Consult a professional for battery testing.
- **Fuses:** Check the fuse in the fused wiring harness (if used) for continuity. Replace if blown.
- **Display Errors:** Refer to the charger's display for any error codes or indicators and consult the specific meaning in the full user manual (if available).

For persistent issues, contact Projecta customer support.

## TECHNICAL SPECIFICATIONS

Model Number	PJ-AC008-2
Output Amperage	0.8 Amps
Output Voltage	12 Volts (DC)
Product Dimensions	5.59 x 2.28 x 8.27 inches
Item Weight	1.25 pounds (0.57 Kilograms)
Color	Black

## WHAT'S INCLUDED

Your Projecta Charge N' Maintain 12V Battery Charger package includes:

- Projecta PJ-AC008-2 Battery Charger Unit
- Fused Wiring Harness (BCWH)
- Battery Clamps
- 9.84 ft (3m) Extension Cable



Image: The Projecta battery charger displayed with all its included accessories, such as the fused wiring harness and battery clamps.



Image: The main unit of the Projecta PJ-AC008-2 Charge N' Maintain 12V Battery Charger.

## SAFETY INFORMATION

---

Your safety is paramount when using electrical devices. The Projecta Charge N' Maintain charger incorporates several safety features:

- **Spark-Free Connection:** Designed to prevent sparks when connecting or disconnecting from the battery, reducing the risk of ignition of flammable gases.
- **Polarity Protection:** Automatically detects incorrect polarity connections and prevents damage to the charger or battery.
- **Overcharge Protection:** The fully automatic, multi-stage charging process ensures the battery is never overcharged, which can lead to damage or reduced lifespan.
- **Short Circuit Protection:** Protects against short circuits, enhancing safety during operation.

Always read and understand all instructions before operating the charger. Keep out of reach of children. Do not expose the charger to rain or excessive moisture.


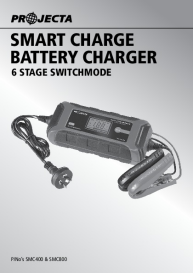


## WARRANTY AND SUPPORT

---

Projecta products are manufactured to high standards and are backed by a manufacturer's warranty. For specific warranty details, including coverage period and terms, please refer to the warranty card included with your product or visit the official Projecta website. For technical support, troubleshooting assistance, or to inquire about replacement parts, please contact Projecta customer service through their official channels. Keep your proof of purchase for warranty claims.



Related Documents

	<p><a href="#">Projecta Charge N' Maintain Battery Chargers - Everyday Motoring</a></p> <p>Discover the Projecta Charge N' Maintain range of automatic battery chargers, designed for home use and maintaining automotive and marine batteries. Features include 2-stage charging, safety protections, and LED indicators.</p>
	<p><a href="#">Projecta SMART CHARGE Battery Charger SMC400 SMC800 User Manual</a></p> <p>User manual for Projecta SMART CHARGE 6 Stage Switchmode Battery Chargers (SMC400, SMC800). Learn about features, safety, charging instructions, specifications, and FAQs.</p>
	<p><a href="#">Projecta Intelli-Start PJ-IS1400-2 12V Lithium Jump Starter &amp; Power Bank Owners Manual</a></p> <p>Comprehensive owners manual for the Projecta Intelli-Start PJ-IS1400-2, detailing its features, safety instructions, jump starting procedures, charging, and troubleshooting for this 12V lithium jump starter and portable power bank.</p>
	<p><a href="#">Projecta INTELLI-RV PM200 12V Power Management System User Manual</a></p> <p>This manual provides detailed information on the Projecta INTELLI-RV PM200 12V Power Management System, covering its features, installation, operation, safety guidelines, troubleshooting, and technical specifications for use in caravans and motor homes.</p>

Documents - Projecta – PJ-AC008-2

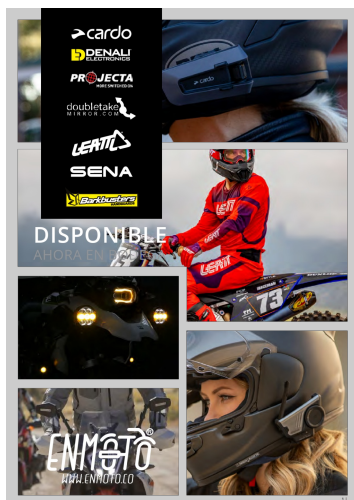


[\[pdf\]](#) Catalog

2024 Projecta USA Catalog More Switched On US Email v 1740000665 cdn shopify s files 1 0660 5547 1335 |||

PRODUCT CATALOG JUMP STARTERS BATTERY CHARGERS THE INTELLI-START JUMP STARTER RANGE SMART, COMPA ... timize its charging methods to ensure charging is stopped when the battery reaches capacity. 4 4 **PJ-AC008-2**12V AUTOMATIC CHARGER Ideal for maintaining infrequently used vehicles such as motorcycles...

lang:en score:26 filesize: 10.03 M page\_count: 16 document date: 2024-10-16



[pdf]

EnMoto 20250208 MIAMI 2 25 bb v 1740579753 cdn shopify s files 1 0297 3981 0869 |||

DISPONIBLE AHORA EN BODEGA 1 DISPONIBLE AHORA EN BODEGA

PACKTALK EDGE DUO PT200101 PACKTALK EDGE ... AH.24.10000 7

DISPONIBLE AHORA EN BODEGA PROJECTA BATTERY CHARGER L12V-0.8A -

4 STAGE AUTOMATIC **PJ-AC008-2** PROJECTA 12V 900A EMERGENCY JUMP

STARTER PJ-IS920-2 8 DISPONIBLE AHORA EN BODEGA ADVE...

lang:i-klngon **score:19** filesize: 3.92 M page\_count: 25 document date: 2025-02-25