

Core Innovations CTP500BL

Core Innovations Wireless Mini Portable Thermal Printer Label Maker

Model: CTP500BL

INTRODUCTION

The Core Innovations Wireless Mini Portable Thermal Printer is a compact and versatile device designed for on-the-go printing. Utilizing thermal printing technology, it produces high-quality, monochrome prints without the need for ink or toner. This manual provides comprehensive instructions for setting up, operating, and maintaining your thermal printer.

WHAT'S IN THE BOX

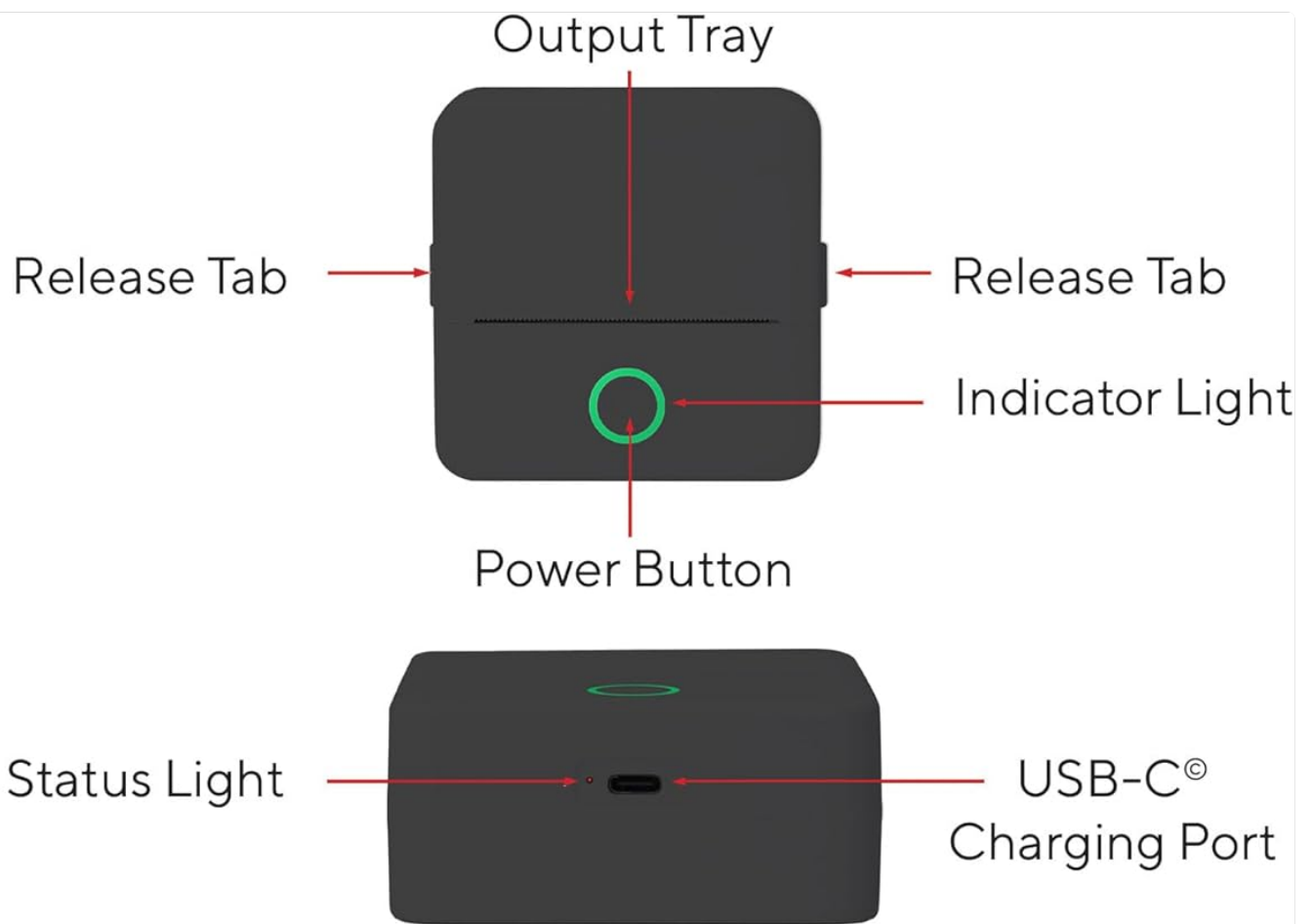
- Core Innovations Wireless Mini Portable Thermal Printer
- USB-C Charging Cable
- Thermal Paper Rolls (Labels)
- User Manual



Image: The printer bundle, including the printer, a smartphone displaying the companion app, and several rolls of thermal paper.

PRODUCT OVERVIEW

Familiarize yourself with the key components of your thermal printer.



Indicator Light



Blinking Green Light:
Device is in pairing mode



Solid Green Light:
Device is connected



Solid Red Light:
**Out of paper/ Overheated/
Output tray is open**

Status Light



Solid Red Light:
Device is charging



Status Light Off:
Fully charged

Image: A detailed diagram highlighting the printer's power button, indicator light, release tabs, output tray, status light, and USB-C charging port. It also explains the meaning of the indicator and status light colors (blinking green for pairing, solid green for connected, solid red for out of paper/overheated/output tray open, and off for fully charged).

Indicator Light Status:

- **Blinking Green Light:** Device is in pairing mode.
- **Solid Green Light:** Device is connected.
- **Solid Red Light:** Out of paper, overheated, or output tray is open.

- **Status Light Off:** Fully charged.

SETUP

1. Charging the Printer

Before first use, fully charge the printer. Connect the provided USB-C charging cable to the printer's USB-C port and the other end to a compatible USB power adapter (not included). The status light will be solid red while charging and turn off when fully charged. A full charge provides approximately 1.5 hours of continuous use.

2. Loading Thermal Paper

1. Press the release tabs on both sides of the printer and open the lid.
2. Insert a roll of thermal paper into the compartment, ensuring the paper feeds from the top and is aligned correctly.
3. Pull a small amount of paper out past the cutting edge.
4. Close the lid firmly until it clicks into place.

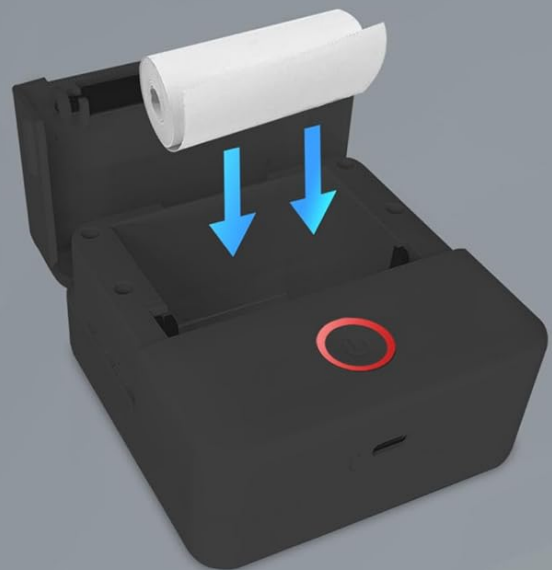
LOADING YOUR PRINTER IN 3 EASY STEPS

1. Press the tabs and open the lid



Maximum paper size: 2.25"
Minimum paper size: 2.0"

2. Load the paper like below



3. Close the lid and you're ready to print



Image: A visual guide demonstrating the three steps to load thermal paper: pressing the tabs to open the lid, placing the paper roll inside, and closing the lid.

Maximum paper size: 2.25 inches. Minimum paper size: 2.0 inches.

3. App Installation

Download the free "InstaPrint" app from the Apple App Store (for iOS devices) or Google Play Store (for Android devices). The app is required to operate the printer.

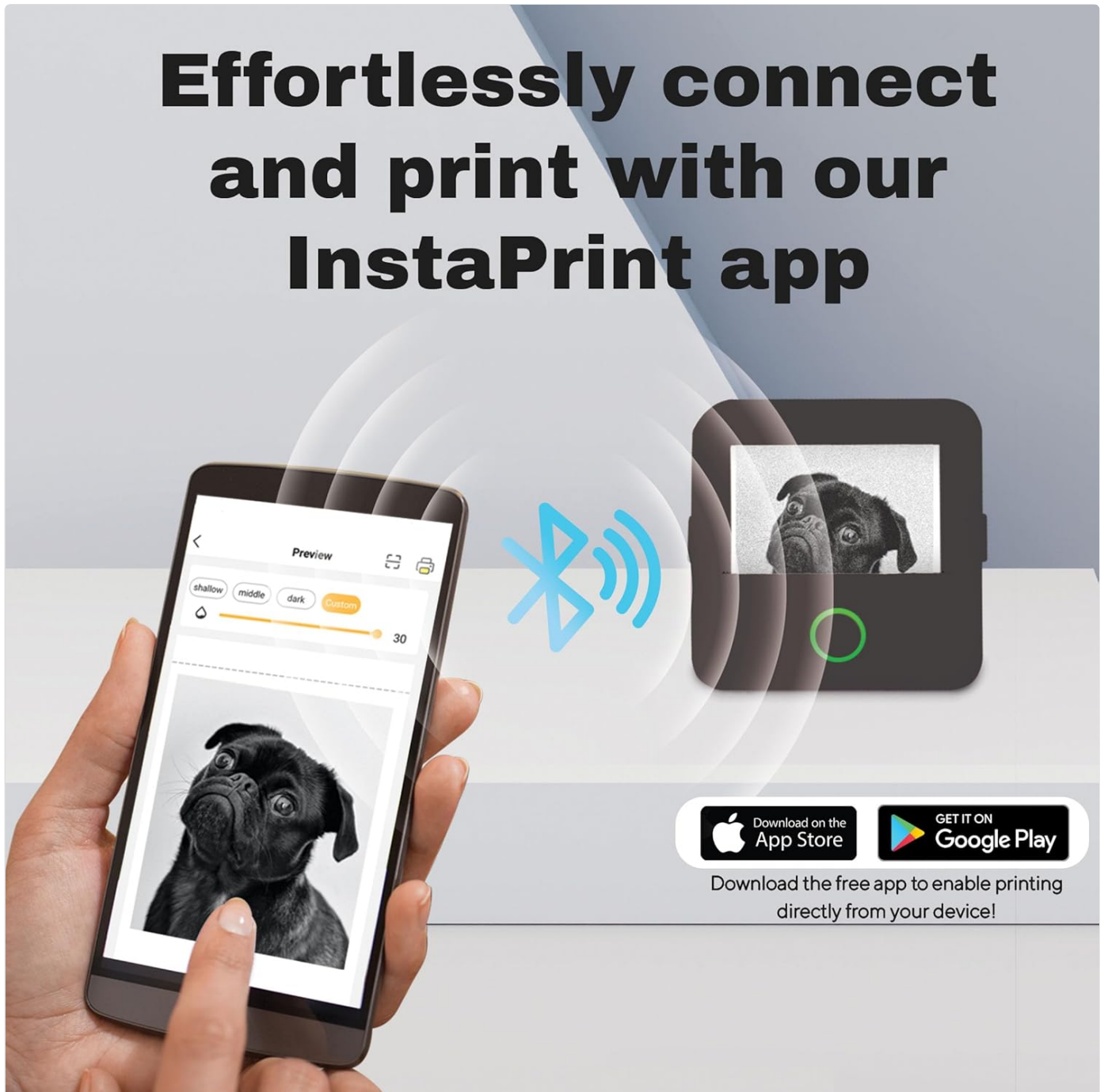


Image: A smartphone displaying the InstaPrint app interface next to the thermal printer, illustrating the wireless connection for printing.

4. Bluetooth Pairing

1. Ensure the printer is charged and powered on. The indicator light will blink green, indicating it's in pairing mode.
2. Enable Bluetooth on your smartphone or tablet.
3. Open the "InstaPrint" app. The app will guide you through the pairing process. Select your printer from the list of available devices.
4. Once successfully paired, the indicator light on the printer will turn solid green.

- **Text:** Add text, choose fonts, sizes, and styles.
- **Images:** Import photos from your gallery, crop, rotate, and adjust contrast/brightness.
- **Templates:** Utilize pre-designed templates for labels, notes, and more.
- **Drawing:** Create freehand drawings directly in the app.

Your browser does not support the video tag.

Video: This video demonstrates the Core Innovations Mini Thermal Printer in action, showcasing its ease of use and the quality of its prints for various applications.

MAINTENANCE

Cleaning the Print Head

To ensure optimal print quality, regularly clean the print head. Use a cotton swab lightly dampened with isopropyl alcohol. Gently wipe the print head surface. Allow it to dry completely before closing the lid and using the printer.

Paper Storage

Store thermal paper in a cool, dry place away from direct sunlight and heat to prevent discoloration and degradation of print quality.

TROUBLESHOOTING

Problem	Possible Cause	Solution
Printer not turning on.	Low battery.	Charge the printer using the provided USB-C cable.
Cannot pair via Bluetooth.	Bluetooth is off on device; printer not in pairing mode; interference.	Ensure Bluetooth is enabled. Power cycle the printer to enter pairing mode (blinking green light). Move closer to the printer and away from other wireless devices.
Poor print quality (faint/blurry).	Print head dirty; incorrect paper loading; low battery.	Clean the print head. Re-load paper correctly. Charge the printer. Adjust print darkness settings in the app.
Printer not printing.	Out of paper; lid not closed; app not connected; print head overheated.	Check and replace paper roll. Ensure lid is securely closed. Verify app connection. Allow printer to cool down if the indicator light is solid red.

SPECIFICATIONS

Feature	Detail
Model Number	CTP500BL
Printing Technology	Thermal
Connectivity	Bluetooth, USB
Print Resolution	200 x 200 DPI
Printer Output	Monochrome

Feature	Detail
Max Print Speed (Monochrome)	12 ppm
Compatible Devices	Android 4.4 or above, iOS 8.0 or above
Battery Life	Up to 1.5 hours continuous use
Dimensions (L x W x H)	3.31" x 3.31" x 1.46"
Item Weight	11.6 ounces
UPC	810111502597

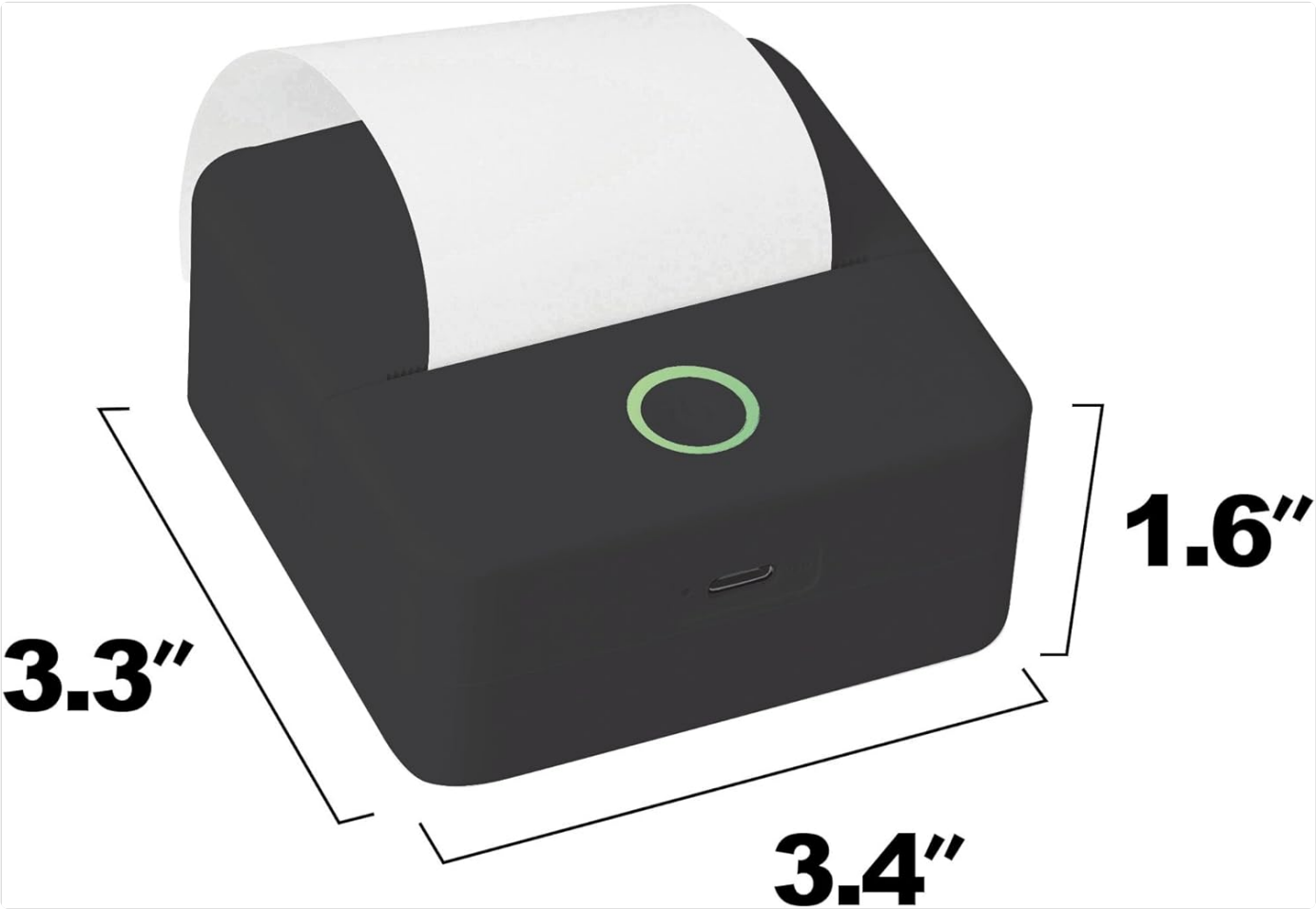


Image: The thermal printer shown with its compact dimensions: 3.3 inches (depth), 3.4 inches (width), and 1.6 inches (height).

WARRANTY AND SUPPORT

This Core Innovations product comes with a limited warranty. For detailed warranty information, technical support, or service inquiries, please refer to the contact information provided on the product packaging or visit the official Core Innovations website.

Always ensure you are using official Core Innovations accessories and thermal paper for optimal performance and to maintain warranty validity.

2023.10.14

DP AUDIO VIDEO LLC

Foran's Electrical and Electronic Testing S.A. Inc.
914 W. Piquette Avenue
Baltimore, MD 21209
USA

RE: CONFIDENTIALITY REQUEST FOR

EUT NAME: Thermal Printer
Trademark: Core Innovations
MODEL: CTP500
CTP500WH, CTP500PR, CTP500TD, CTP500BL, CTP500SB, CTP500PN
FCC ID: 2AVRVCTP500

To Whom It May Concern:

This letter serves as an official request for confidentiality under sections 0.457 and 0.459 of CFR 47. We have requested that the:


- Block Diagram
- Schematics
- Operational Description

request to be submitted with this application be permanently withheld from public review.

The above materials contain trade secrets and proprietary information not customarily obtained in the public. The public disclosure of these materials may be harmful to the applicant and provide unjustified benefits to its competitors.

Please contact me if there is any information you may need.

Sincerely,

Client's signature: 
Client's name: Roy R. Juan
Client's address: 1000 Main St, Los Angeles, California, USA 90021

[Confidentiality Request for Core Innovations CTP500 Thermal Printer](#)

Official request for confidentiality for the Core Innovations CTP500 Thermal Printer, including model numbers CTP500WH, CTP500PR, CTP500TD, CTP500BL, CTP500SB, CTP500PN, and FCC ID 2AVRVCTP500. DP AUDIO VIDEO LLC requests that the Block Diagram, Schematics, and Operational Description be permanently withheld from public review due to proprietary information.

lang:en score:16 filesize: 137.06 K page_count: 1 document date: 2023-10-14