

Manuals+

[Q & A](#) | [Deep Search](#) | [Upload](#)

manuals.plus /

› [Archaic](#) /

› [Archaic Tailgate Ladder Instruction Manual for Suzuki Jimny Sierra JB64 JB74 \(2019-2024\)](#)

Archaic 74JMN-WMTZ-EU1

Archaic Tailgate Ladder Instruction Manual

For Suzuki Jimny Sierra JB64 JB74 (2019-2024)

1. INTRODUCTION

This manual provides detailed instructions for the installation, operation, and maintenance of your Archaic Tailgate Ladder. This product is designed to provide convenient access to the roof of your Suzuki Jimny Sierra JB64 or JB74 model, manufactured between 2019 and 2024. Please read this manual thoroughly before installation and use to ensure proper function and safety.



Figure 1: Archaic Tailgate Ladder installed on a Suzuki Jimny and a standalone view of the ladder.

2. SAFETY INFORMATION

- Ensure all bolts and fasteners are securely tightened before and after each use.
- Do not exceed the maximum load capacity of 200 kg (440 lbs).
- Always maintain three points of contact (two hands and one foot, or two feet and one hand) when climbing or descending.
- Use caution when operating the foldable steps to avoid pinching fingers.
- Regularly inspect the ladder for any signs of damage or wear. Do not use if damaged.

3. PACKAGE CONTENTS

Verify that all components are present before beginning installation:

- 1 x Archaic Tailgate Ladder (Black Aluminum)

- Pre-assembled bolts and necessary installation hardware



Figure 2: Tailgate Ladder and included hardware.

4. SPECIFICATIONS

Feature	Detail
Brand	Archaic
Model Number	74JMN-WMTZ-EU1
Color	Black

Material	Aluminum
Product Dimensions (L x W x H)	10 x 12.67 x 40 cm (approx. 3.9 x 5 x 15.7 inches)
Item Weight	2.5 Kilograms (5.5 lbs)
Maximum Load Capacity	200 kg (440 lbs)
Number of Steps	2 (foldable, anti-slip)
Compatibility	Suzuki Jimny Sierra JB64 JB74 (2019-2024)

5. SETUP AND INSTALLATION

No drilling is required for installation. Follow these steps carefully:

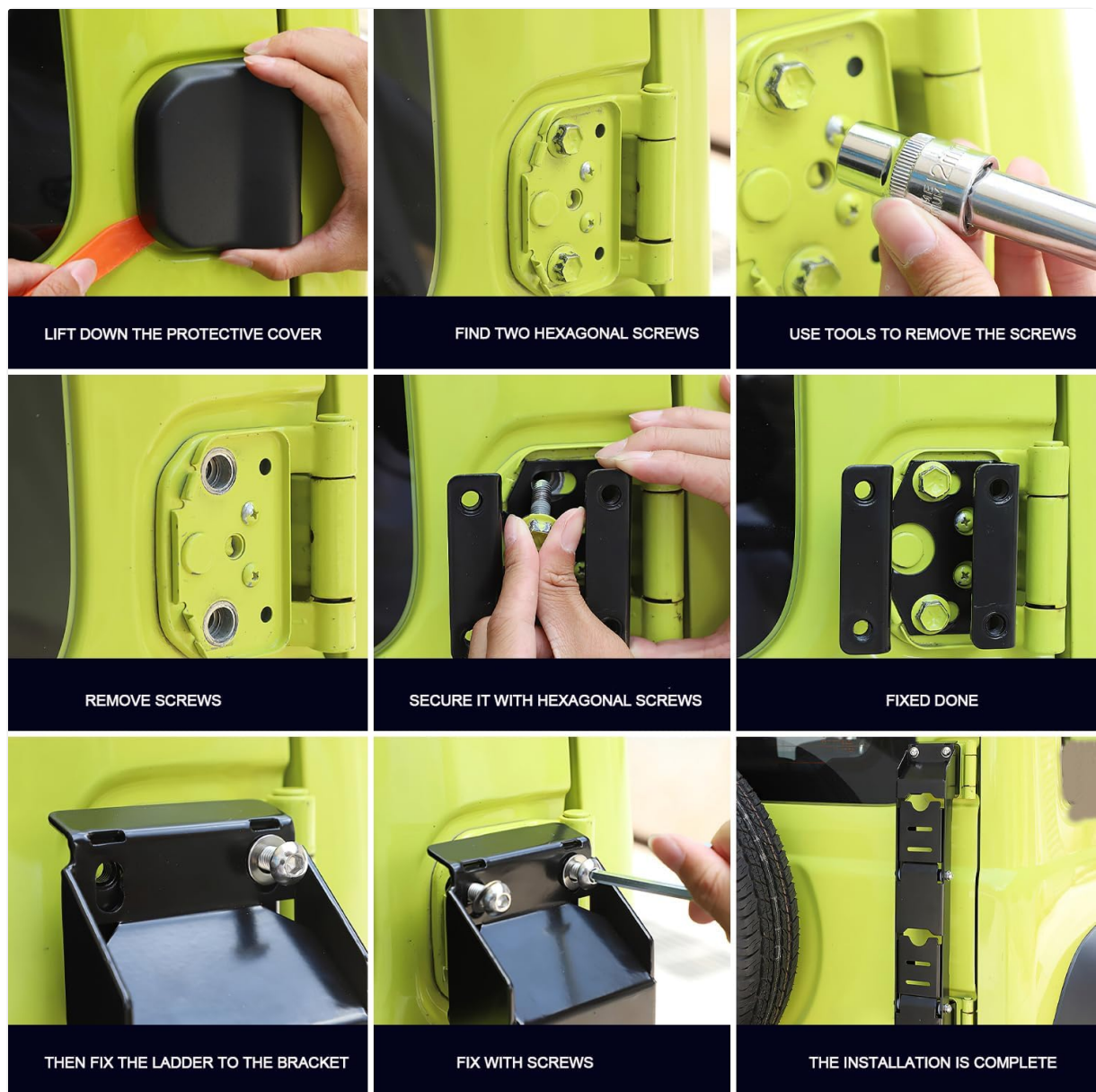


Figure 3: Overview of the installation process.

- 1. Lift Down the Protective Cover:** Carefully remove the protective cover located on the vehicle's tailgate hinge.
- 2. Locate Hexagonal Screws:** Identify the two hexagonal screws securing the hinge mechanism.

3. **Remove Screws:** Use appropriate tools (e.g., a socket wrench) to loosen and remove these screws.
4. **Prepare Mounting Area:** With the screws removed, the hinge plate is now ready for the ladder bracket.
5. **Secure Bracket:** Position the ladder's mounting bracket over the hinge and secure it using the provided hexagonal screws. Ensure it is flush and stable.
6. **Tighten Hinge:** Once the bracket is in place, fully tighten the hexagonal screws to secure the hinge and bracket.
7. **Attach Ladder to Bracket:** Align the main ladder unit with the installed bracket.
8. **Fix with Screws:** Use the remaining screws to firmly attach the ladder to the bracket.
9. **Verify Installation:** Double-check all connections and ensure the ladder is securely mounted and does not wobble. The installation is now complete.

6. OPERATING INSTRUCTIONS

The Archaic Tailgate Ladder features foldable steps for convenience and a compact profile when not in use.

6.1 Folding and Unfolding Steps

- To **unfold** the steps: Gently pull each step outwards and downwards until it locks into its open position.
- To **fold** the steps: Push each step upwards and inwards until it rests flush against the ladder frame.



Figure 4: Demonstration of folding and unfolding the ladder steps.

6.2 Using the Ladder

Once the steps are unfolded, you can use the ladder to access the roof of your vehicle. Ensure the steps are fully extended and stable before stepping on them. Always face the ladder when climbing or descending.



Figure 5: Person using the ladder to access the vehicle roof.

7. MAINTENANCE

To ensure the longevity and safe operation of your tailgate ladder, perform the following maintenance:

- **Regular Cleaning:** Clean the ladder periodically with mild soap and water to remove dirt, mud, and road grime. Rinse thoroughly and dry.
- **Fastener Check:** Regularly inspect all bolts and fasteners for tightness. Re-tighten as necessary to prevent loosening due to vibrations.
- **Structural Inspection:** Check the aluminum frame and steps for any signs of cracks, bends, or corrosion. Ensure the folding mechanism operates smoothly.
- **Anti-Slip Surface:** Verify that the anti-slip surfaces on the steps are intact and provide adequate grip.

8. TROUBLESHOOTING

If you encounter any issues with your Archaic Tailgate Ladder, consider the following:

- **Ladder feels loose after installation:** Re-check all mounting bolts and ensure they are tightened to the recommended specifications.

- **Steps are difficult to fold/unfold:** Inspect the hinge points for any obstructions or debris. A small amount of lubricant can be applied to the pivot points if needed, but avoid excessive lubrication that could attract dirt.
- **Tailgate does not open/close freely:** Ensure the ladder is correctly installed and not interfering with the tailgate's movement. The design allows for free operation of the tailgate.

9. WARRANTY AND SUPPORT

For warranty information or technical support, please refer to the product packaging or contact Archaic customer service directly. Keep your purchase receipt as proof of purchase.