

Chtoocy ZC25

Chtoocy Egg Incubator User Manual

Model: ZC25

Brand: Chtoocy

1. PRODUCT OVERVIEW

The Chtoocy Egg Incubator is designed for efficient hatching of various poultry eggs, featuring automatic egg turning, precise temperature and humidity control, and an integrated egg candler. Its user-friendly design makes it suitable for beginners.

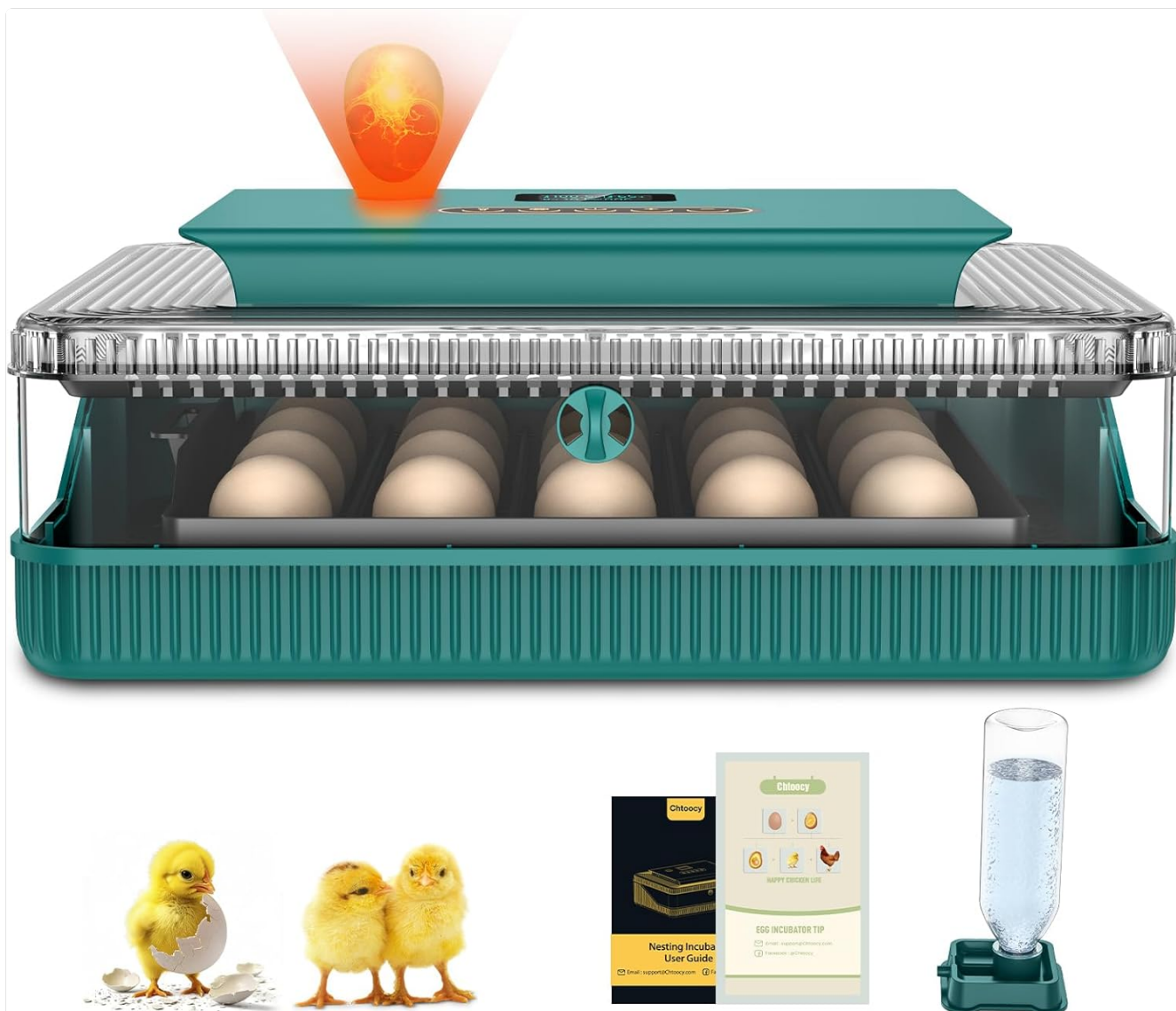


Figure 1: Chtoocy Egg Incubator with automatic turner and candler.

Key Features:

- **Automatic Egg Turning:** Ensures uniform heat distribution for optimal hatching.
- **Precise Temperature & Humidity Control:** Maintains ideal conditions for embryo development.
- **Integrated Egg Candler:** Allows observation of embryo development without disturbing the eggs.
- **Adjustable Egg Tray Dividers:** Accommodates various egg sizes (quail, pigeon, hen, duck, goose).
- **Clear Visibility:** Transparent lid for easy monitoring.
- **External Water Inlet:** Simplifies water replenishment for humidity control.
- **Day Display & Controller:** Tracks incubation days and manages humidity.
- **Easy to Clean:** Detachable fan and rinsable base for convenient maintenance.

2. SETUP INSTRUCTIONS

Follow these steps to set up your Chtooocy Egg Incubator for the first time.

1. **Add Water:** Fill the water bottle and place it into the designated slot on the base. Ensure water flows into the base's water channels (Area A and B).
2. **Place the Grid:** Insert the grid into the base.
3. **Place the Egg Frame:** Position the egg frame on top of the grid.
4. **Insert Egg Tray Dividers:** Adjust the dividers to fit your egg size.
5. **Close the Lid:** Carefully place the top lid onto the base. Ensure the rotating shaft from the lid is correctly inserted into the open slot of the egg tray for automatic turning functionality.
6. **Preheat the Incubator:** Plug in the incubator and allow it to preheat for at least 1 hour to stabilize temperature and humidity before adding eggs.

Your browser does not support the video tag.

Video 1: Detailed instructions on how to install and set up the automatic egg incubator.

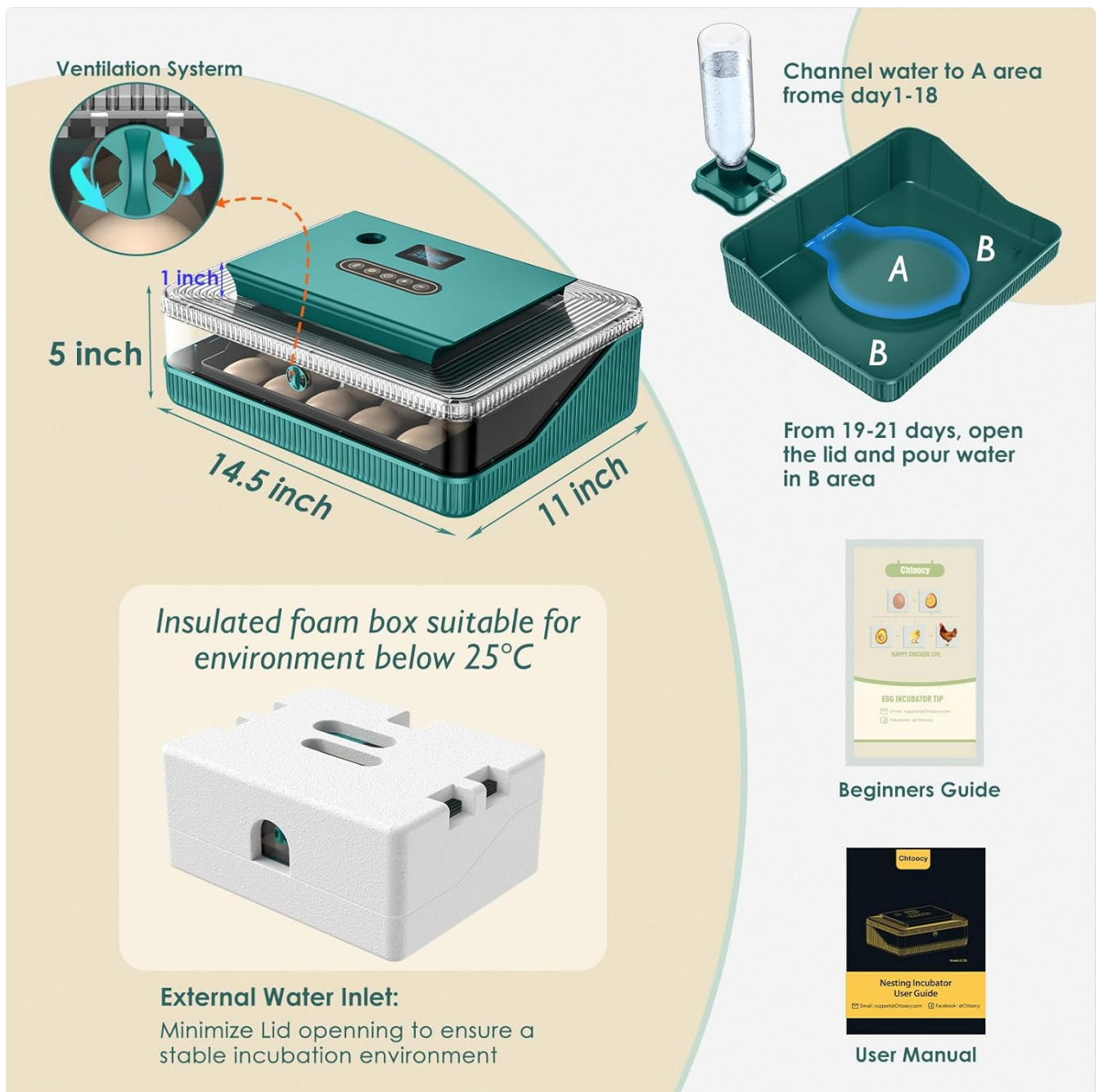


Figure 2: Components and dimensions of the incubator, highlighting the external water inlet and ventilation system.

3. OPERATING INSTRUCTIONS

Proper operation is crucial for successful hatching. This section covers the incubation and hatching periods.

3.1 Incubation Period (Day 1-17)

- Fill the water bottles and ensure all vents are closed to maintain humidity.
- Monitor the temperature and humidity levels on the display. The incubator features live temperature reading, humidity control, and alarms for high/low temperature or low humidity.
- The automatic egg turning system rotates eggs once every hour.
- Use the built-in egg candler to observe embryo development. This is recommended around 5-6 days for selecting fertilized eggs, 11-12 days for checking development, and 16-17 days for final checks.

Your browser does not support the video tag.

Video 2: Guide for the incubation period from Day 1 to Day 17, including temperature and humidity monitoring.



Figure 3: Control panel displaying incubation parameters and settings.

3.2 Hatching Period (Day 18-21)

- **Day 18:** Stop turning eggs and remove the turning frame. Spray water twice a day to keep eggshells moist.
- **Day 19:** Raise the humidity and control the temperature to 98-99°F.
- **Day 20:** Open the vents. Fill water in zone B of the base or spray water twice a day.
- Be patient during hatching. Reduce the frequency of opening the lid to increase the hatching rate. It is recommended to observe through the transparent lid.

Your browser does not support the video tag.

Video 3: Instructions on how to stop egg turning on Day 18 for the hatching period.

Your browser does not support the video tag.

Video 4: Guide for the hatching period from Day 18 to Day 21, showing chicks hatching.

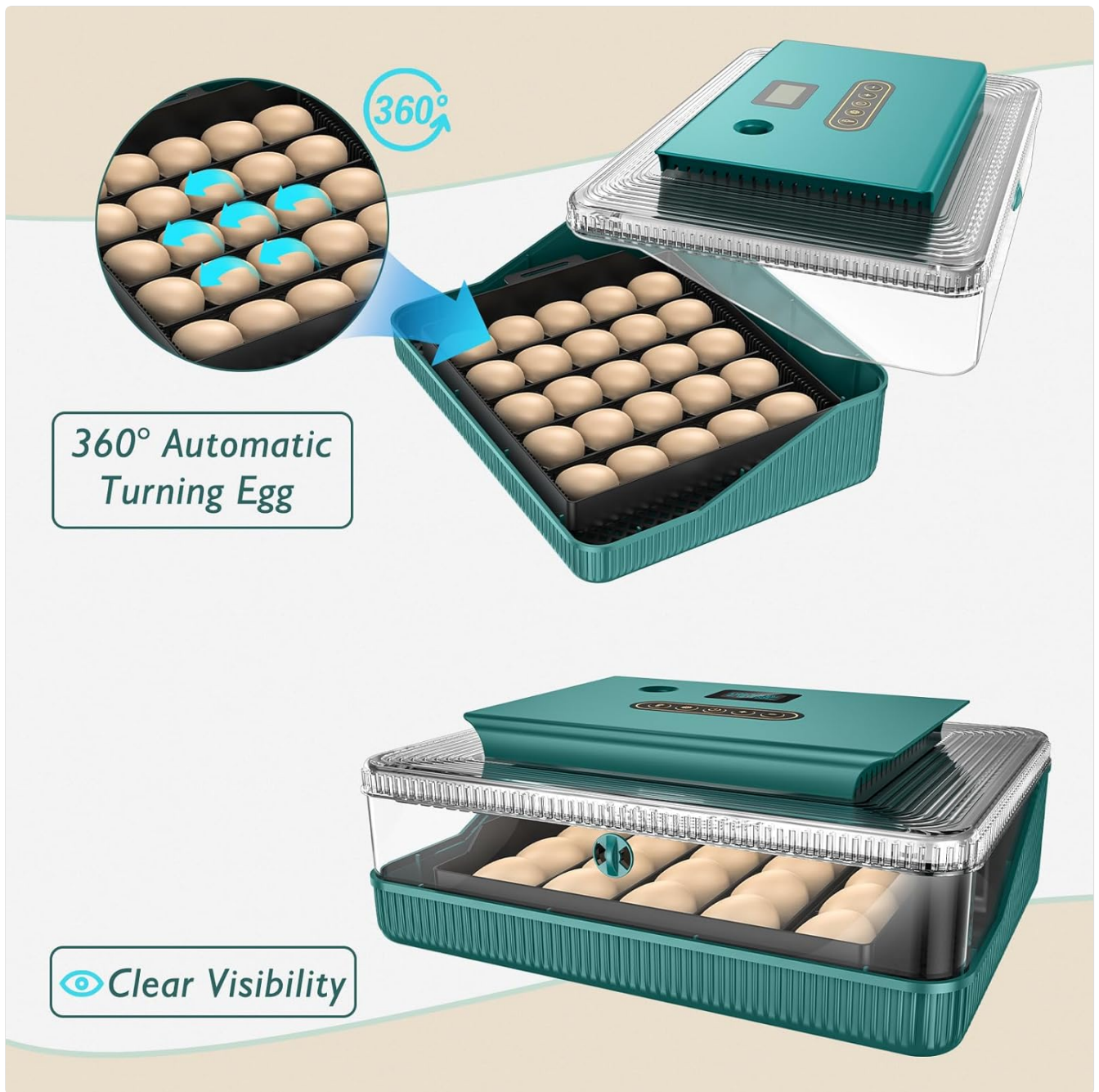


Figure 4: Illustration of the 360° automatic egg turning feature.

Equipped with Egg Candler

Safe CE and FCC Certification



5-6 days

Selecting
fertilised eggs



11-12 days

Check egg
development



16-17 days

Checking egg
embryo
development



Built-in egg lamp, which can be used to select
fertilized eggs and observe embryonic development

Figure 5: The built-in egg candler for observing embryo development at different stages.

Adjustable Egg Tray Dividers

Multi-functional Egg Tray



Figure 6: Adjustable egg tray dividers to accommodate various egg sizes.

4. BROODING STAGE (DAY 1-16 AFTER HATCHING)

After hatching, chicks require a warm and safe environment. You can use a brooder box with a heat lamp or a heater bulb.

- Take out the newly hatched brooding birds from the incubator.
- Place them in a brooder box with a temperature of about 86°F - 95°F.
- Provide appropriate feed and water for the brooding birds.

Your browser does not support the video tag.

Video 5: Short clip showing newly hatched chicks in a brooder box.

5. MAINTENANCE

Regular cleaning ensures the longevity and hygiene of your incubator.

- The top fan is detachable for easy cleaning.
- The base of the incubator can be rinsed with water.
- Ensure all parts are completely dry before reassembly and storage.

6. TROUBLESHOOTING

Common issues and their potential solutions:

- **Temperature/Humidity Alarms:** The incubator is equipped with a self-alarming system for high/low temperature and low humidity. Address the cause (e.g., add water, check power supply).
- **Humidity Variations:** Environmental humidity affects internal humidity. If humidity is high, it may not be necessary to add water. If humidity is too low, add water using the external water bottle. Avoid opening the lid too often as this can cause significant humidity changes.
- **Egg Turning Mechanism:** Ensure the rotating shaft is correctly inserted into the open slot of the egg tray.

7. SPECIFICATIONS

Feature	Detail
Model Number	ZC25
Color	Green
Material	Plastic
Product Dimensions	14"L x 11"W x 5"H
Item Weight	5.5 Pounds
Is Electric	Yes
Egg Capacity (Hen Eggs)	25

8. WARRANTY AND SUPPORT

For detailed warranty information and customer support, please refer to the official user manual provided with your product. The manufacturer, Chtooocy, is committed to providing assistance for any product-related inquiries or issues.

You can also find additional resources and contact information on the [Chtooocy Store page](#).

A PDF version of the User Manual is available for download:[User Manual \(PDF\)](#).

9. IMPORTANT SAFETY INFORMATION

CAUTION:

- Do not use this product unless the cover is in place.
- For indoor use only.
- Do not alter the product in any way.
- Never use frayed or damaged cords.
- Fully insert the plug into the receptacle.
- Unplug the light when not in use.
- Always store this product indoors.