

FLOLAB SP3142368526

FLOLAB NanoArmour ONETIME PRO Screen Protector User Manual for Samsung Galaxy S24 Ultra

Comprehensive instructions for installing and maintaining your FLOLAB NanoArmour ONETIME PRO 3D Anti-Reflective Tempered Glass Screen Protector for Samsung Galaxy S24 Ultra.

1. INTRODUCTION

The FLOLAB NanoArmour ONETIME PRO screen protector is designed to provide advanced protection and enhanced visual clarity for your Samsung Galaxy S24 Ultra. This tempered glass protector features a 3D curved design for edge-to-edge coverage, anti-reflective technology to reduce glare, and an oleophobic coating for smudge resistance.

Key Features:

- **3D Infinity Edge-to-Edge Design:** Precision-engineered 3D curved technology ensures a seamless fit for the Samsung S24 Ultra's display.
- **ClearVue Anti-Reflective Technology:** Advanced AR coating minimizes glare and enhances image quality, improving screen visibility, especially in bright environments.
- **Smudge Resistant:** Built-in oil-resistant nanotechnology helps prevent fingerprints and smudges, keeping the screen clean.
- **9H Hardness:** Provides robust protection against scratches and impacts.
- **Case Compatible:** Designed to work with most phone cases.



Figure 1: Overview of FLOLAB NanoArmour ONETIME PRO components, including the installation tray, two screen protectors, and a Samsung Galaxy S24 Ultra phone.

2. SETUP: INSTALLATION INSTRUCTIONS

Follow these steps for a precise and dust-free installation of your screen protector. Ensure you are in a clean, dust-free environment before beginning.

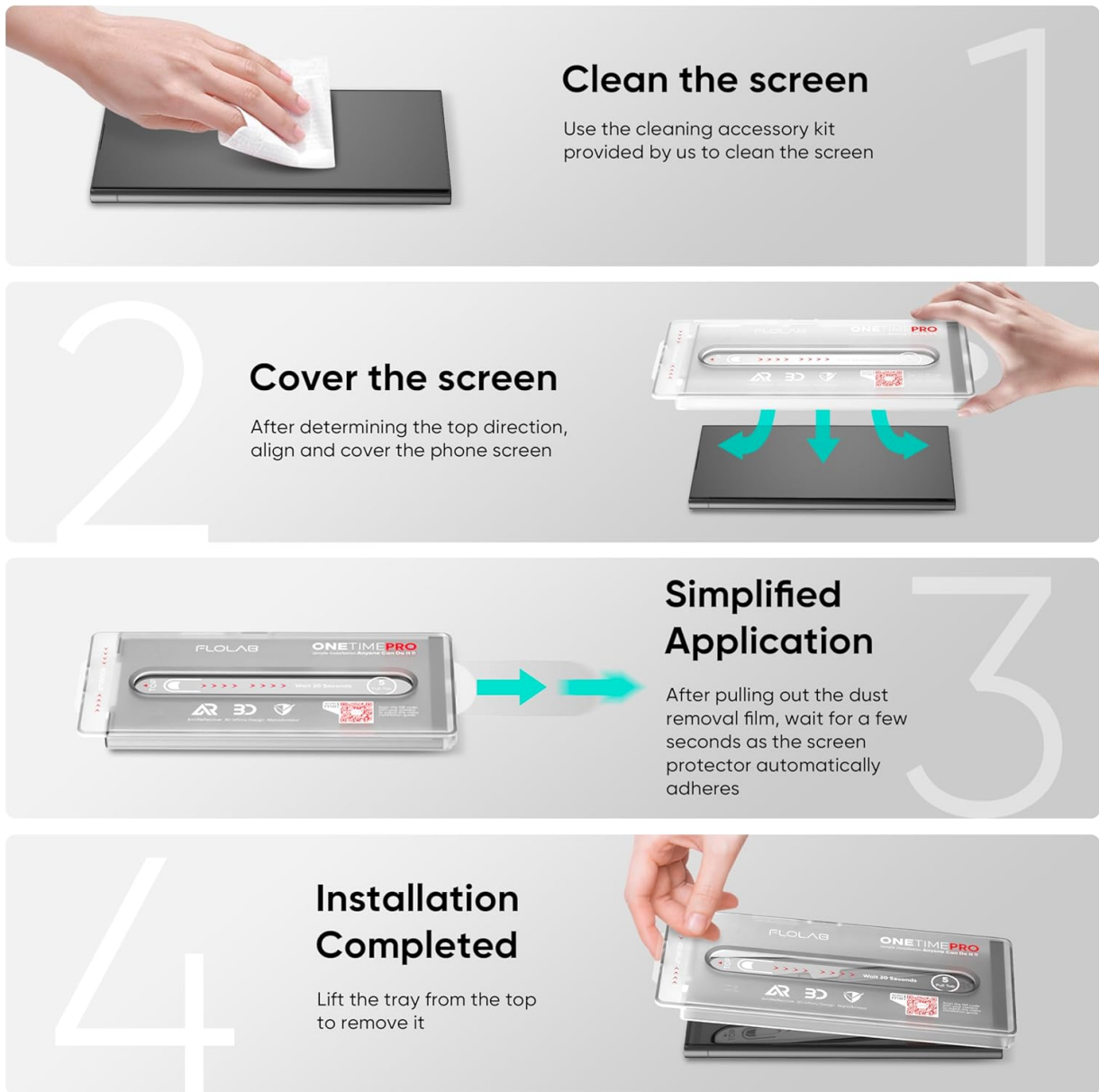


Figure 2: Visual guide for the four-step installation process of the screen protector.

- 1. Clean the Screen:** Use the provided cleaning accessory kit (wet wipe, microfiber cloth, dust removal sticker) to thoroughly clean your phone's screen. Ensure no dust, smudges, or debris remain.
- 2. Cover the Screen:** Place the installation tray over your phone. Ensure the tray is correctly oriented and aligned with the phone's display.
- 3. Simplified Application:** Pull out the dust removal film from the installation tray. Wait a few seconds as the screen protector automatically adheres to the phone screen.
- 4. Installation Completed:** Gently lift the installation tray from the top to remove it. If any small bubbles remain, use the provided squeegee to push them towards the edges.

Important: After installation, it is recommended to re-register your fingerprints on your device for optimal fingerprint sensor performance.

In The Box



Figure 3: All items included in the FLOLAB NanoArmour ONETIME PRO package.

3. OPERATING INSTRUCTIONS

Anti-Reflective Display

The ClearVue Anti-Reflective Technology integrated into this screen protector significantly reduces glare and reflections. This enhances the visibility and clarity of your Samsung Galaxy S24 Ultra's display, particularly when used outdoors or in brightly lit environments.

Anti-Reflective Technology



Our advanced AR coating diminishes glares and enhances image quality, accentuating the display's brilliance, especially outdoors

Figure 4: Comparison illustrating the glare reduction provided by FLOLAB's anti-reflective technology versus a standard screen protector.

Fingerprint ID Compatibility

The screen protector is designed to be compatible with the in-display fingerprint sensor of the Samsung Galaxy S24 Ultra. For optimal performance, ensure you re-register your fingerprints after installation. If you experience issues, consider increasing the touch sensitivity setting on your device (usually found in Display settings) and ensure your finger is clean and dry when scanning.

3D Infinity Edge Design

The 3D curved design provides full edge-to-edge coverage, seamlessly integrating with the phone's display without creating white edges or interfering with the phone's aesthetics.



Figure 5: Detailed view of the 3D Infinity Edge Design, showing its precise curvature for a perfect fit.

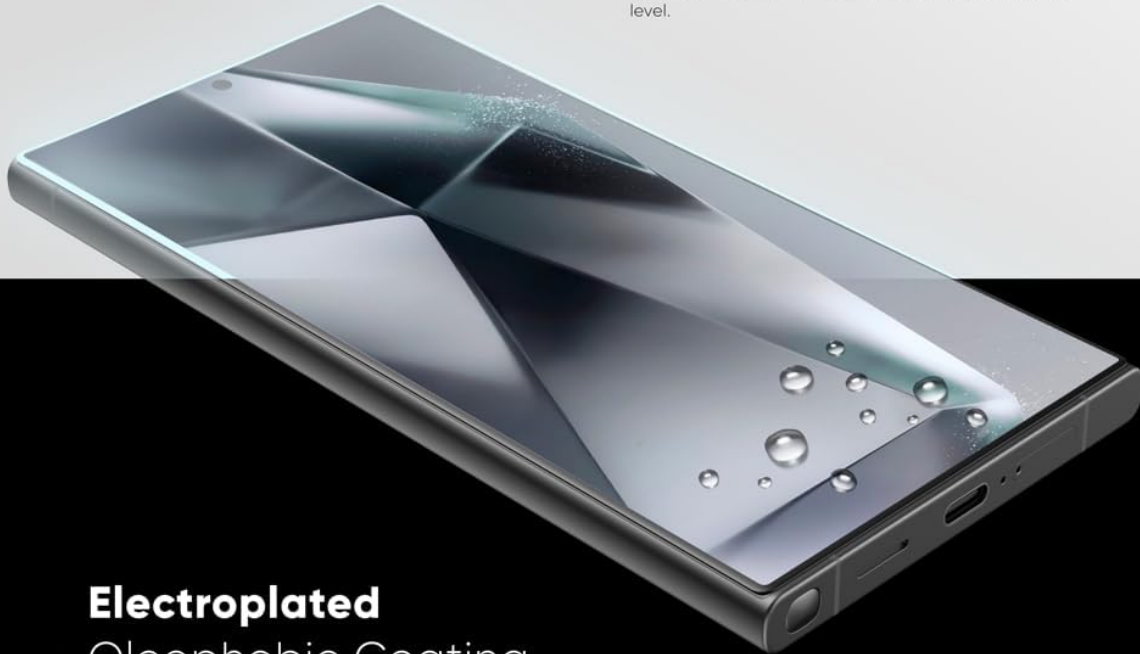
4. MAINTENANCE

Smudge Resistance

The screen protector features an electroplated oleophobic coating that repels oils and reduces fingerprint smudges. This coating helps keep your screen clean and smooth to the touch.

Reinforced Edge **40Kg**

We have taken the edges of the screen and made them stronger and harder than any other glass in the market through science by enhancing the glass at a molecular level.



Electroplated Oleophobic Coating

Premium AF coating leaves your screen feeling silky smooth like butter. Even smoother than the original screen so you won't miss a swipe.

Figure 6: Illustration of the oleophobic coating, showing water droplets beading on the screen protector surface.

Cleaning the Screen Protector

To clean your screen protector, gently wipe it with a soft, lint-free cloth, such as the microfiber cloth provided in the kit. For stubborn smudges, you may lightly dampen the cloth with water or a screen-safe cleaning solution. Avoid harsh chemicals or abrasive materials, as these can damage the oleophobic coating.

5. TROUBLESHOOTING

Air Bubbles After Installation

- Small bubbles can often be pushed out towards the edges of the screen protector using the provided squeegee or a credit card wrapped in a soft cloth.
- For very small bubbles, sometimes they dissipate on their own within 24-48 hours.
- If large bubbles persist, it may indicate dust trapped underneath. In such cases, carefully lift a corner of the protector (if possible without damaging it) and use a dust removal sticker to lift the dust particle, then reapply.

Fingerprint Sensor Issues

- **Re-register Fingerprints:** Always re-register your fingerprints after installing a new screen protector. This allows the sensor to learn your print through the new layer.
- **Increase Touch Sensitivity:** Navigate to your phone's display settings and enable the "Touch sensitivity" option.
- **Clean Finger/Screen:** Ensure both your finger and the screen protector are clean and dry when attempting to use the fingerprint sensor.

Case Interference

- While designed for broad case compatibility, some cases with very tight or raised bezels may cause the screen protector to lift at the edges.
- If this occurs, try a different case or ensure the case does not exert pressure directly on the screen protector's edges.

6. SPECIFICATIONS

| Feature | Detail |
|--------------------|--------------------------|
| Brand | FLOLAB |
| Model Number | SP3142368526 |
| Compatible Devices | Samsung Galaxy S24 Ultra |
| Material | Tempered Glass |
| Item Hardness | 9H |
| Special Feature | Anti-Reflective |
| Unit Count | 2.0 Count |
| Screen Size | 6.8 Inches |
| Product Dimensions | 8.78 x 3.93 x 0.5 inches |
| Item Weight | 4.2 ounces |

7. WARRANTY AND SUPPORT

For information regarding product warranty, returns, or technical support, please refer to the official FLOLAB website or contact FLOLAB customer service directly. Contact details are typically available on the product packaging or the manufacturer's official online channels.

