

GOHHDL A7146A3454H1MI2

GOHHDL Android 13 Car Stereo Instruction Manual

Model: A7146A3454H1MI2 for Hyundai Tucson IX35 (2010-2015)

1. INTRODUCTION

This manual provides comprehensive instructions for the GOHHDL Android 13 Car Stereo, model A7146A3454H1MI2. This unit is designed to integrate seamlessly into Hyundai Tucson IX35 models from 2010 to 2015, offering advanced features such as Wireless CarPlay, Android Auto, GPS navigation, Bluetooth 5.0, and a 10.1-inch IPS touchscreen. Please read this manual thoroughly before installation and operation to ensure proper use and to maximize your driving experience.

2. PACKAGE CONTENTS

Verify that all items listed below are included in your package:

- 1 x GOHHDL 4+64G Android 13 Car Stereo for Hyundai Tucson IX35 2010-2015
- 1 x Power Cable
- 1 x Installation Tool
- 1 x GPS Antenna
- 1 x Rear Camera Input Cable
- 1 x RCA Cable
- 2 x USB Cable
- 1 x AHD Backup Camera
- 1 x Microphone
- 1 x User Manual

Package List & Size



Image: Illustration of the car stereo unit, its dimensions, and all included accessories such as cables, camera, and tools.

3. SETUP AND INSTALLATION

This unit is designed for plug-and-play installation in Hyundai Tucson IX35 models from 2010-2015. Professional installation is recommended. Ensure the vehicle's power is disconnected before beginning installation.

1. **Remove the Original Unit:** Carefully detach the existing car stereo and trim panels. Refer to your vehicle's service manual for specific instructions on panel removal.
2. **Connect Wiring Harness:** Connect the provided power cable and other necessary wiring harnesses to the vehicle's corresponding ports. Ensure all connections are secure.
3. **Install GPS Antenna:** Mount the GPS antenna in a location with a clear view of the sky, typically on the dashboard or under the windshield, away from metal obstructions.
4. **Install AHD Backup Camera (Optional):** If using the included backup camera, install it at the rear of the vehicle and route the cable to the head unit. Connect the camera input cable to the designated port on the stereo.
5. **Mount the New Unit:** Secure the GOHHDL car stereo into the dashboard opening using the provided frame and mounting hardware. Reattach all trim panels.
6. **Power On and Test:** Reconnect the vehicle's power. Turn on the car stereo and perform initial tests for all functions, including audio, touchscreen response, radio, GPS, and camera.

For Hyundai Tucson IX35 2010-2015



Image: Comparison of the car dashboard before and after the installation of the GOHDDL Android 13 Car Stereo.

4. OPERATING INSTRUCTIONS

4.1 Wireless Apple CarPlay and Android Auto

The unit supports both Wireless Apple CarPlay and Android Auto. Connect your smartphone via Bluetooth and Wi-Fi for wireless functionality, or use a USB cable for wired connection. This allows access to phone apps like messages, music, and maps directly on the car stereo screen, with voice control via Siri or Google Assistant.

Wireless Apple CarPlay & Android Auto & Voice Control



Image: Display showing the Wireless Apple CarPlay and Android Auto interfaces with various app icons.

4.2 GPS Navigation and WiFi/Hotspot

The stereo comes with Google Maps pre-installed. Connect to a Wi-Fi network or mobile hotspot to view real-time traffic conditions. You can also download offline map data for navigation without an internet connection. The unit supports downloading and installing most apps from the Google Play Store.



Image: Screen displaying GPS navigation with a map and various online streaming and social media app icons, indicating WiFi connectivity.

4.3 Phone Mirror Link

Mirror your smartphone screen to the car stereo. This feature allows you to view your phone's content, such as GPS navigation or videos, directly on the larger display. Both iOS and Android phones can connect via Wi-Fi or USB cable. For Android devices, ensure necessary developer options permissions are enabled before connecting.



Image: Icon representing the Mirror Link function, showing a phone screen mirrored to the car stereo.

4.4 Bluetooth 5.0

The built-in Bluetooth 5.0 system and microphone enable hands-free calls, Bluetooth music streaming, and phone book synchronization. This enhances driving safety by allowing you to manage calls without handling your phone.



Image: Icon representing Bluetooth 5.0 connectivity.

4.5 FM/RDS Radio

Enjoy high-quality FM/RDS radio with automatic channel search. The frequency range is 87.5-108 FM, and you can preset up to 18 channels. RDS (Radio Data System) provides additional information like station name and song title.

GPS Navigation

Real-time road conditions help avoid traffic jams Accurate satellite positioning prevents you getting lost.



Bluetooth 5.0

Bluetooth connection, driving is safer and more convenient.

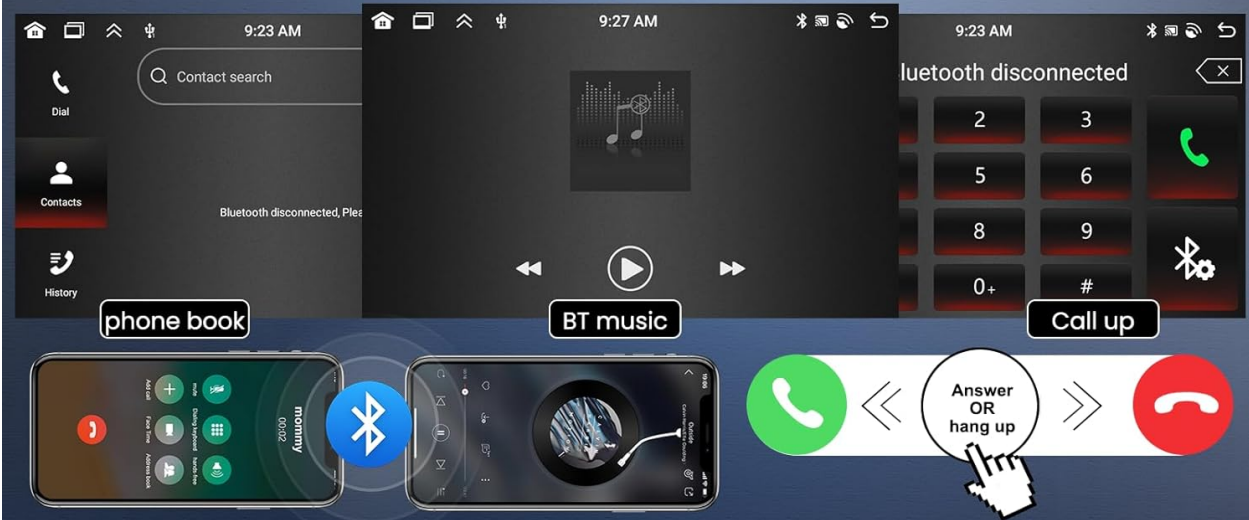


Image: Car stereo screen displaying the FM radio interface with frequency 87.50 MHz, alongside an image of a hand operating steering wheel controls.

4.6 Steering Wheel Control (SWC)

The unit supports the original steering wheel buttons of your car, allowing you to control audio functions conveniently and safely without taking your hands off the wheel. This includes switching songs, adjusting volume, and navigating menus.



Image: Icon representing Steering Wheel Control functionality.

4.7 DSP/EQ Setting

Utilize the DSP (Digital Sound Processor) tuning technology with customizable EQ settings. You can adjust frequency, AE, and choose between 32-band or 10-band EQ to enhance your audio listening experience.



Image: Icon representing DSP/EQ audio settings.

4.8 Split Screen Function

The split-screen function allows you to run two applications simultaneously on the display. For example, you can use navigation on one side while controlling music on the other.

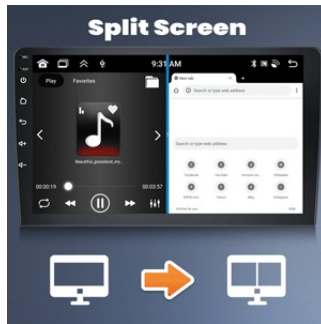


Image: Icon representing the Split Screen function.

4.9 UI Themes

The unit offers 59 UI desktop themes, allowing you to customize the visual appearance of your car stereo interface to match your preferences.



Image: Icon representing the 59 UI Themes Change feature.

4.10 AHD Backup Camera Input

The included AHD backup camera provides a 170-degree ultra-wide angle view and is waterproof. When the vehicle is shifted into reverse, the stereo automatically displays the camera feed on the screen, assisting with safe parking. The camera features night vision capabilities.

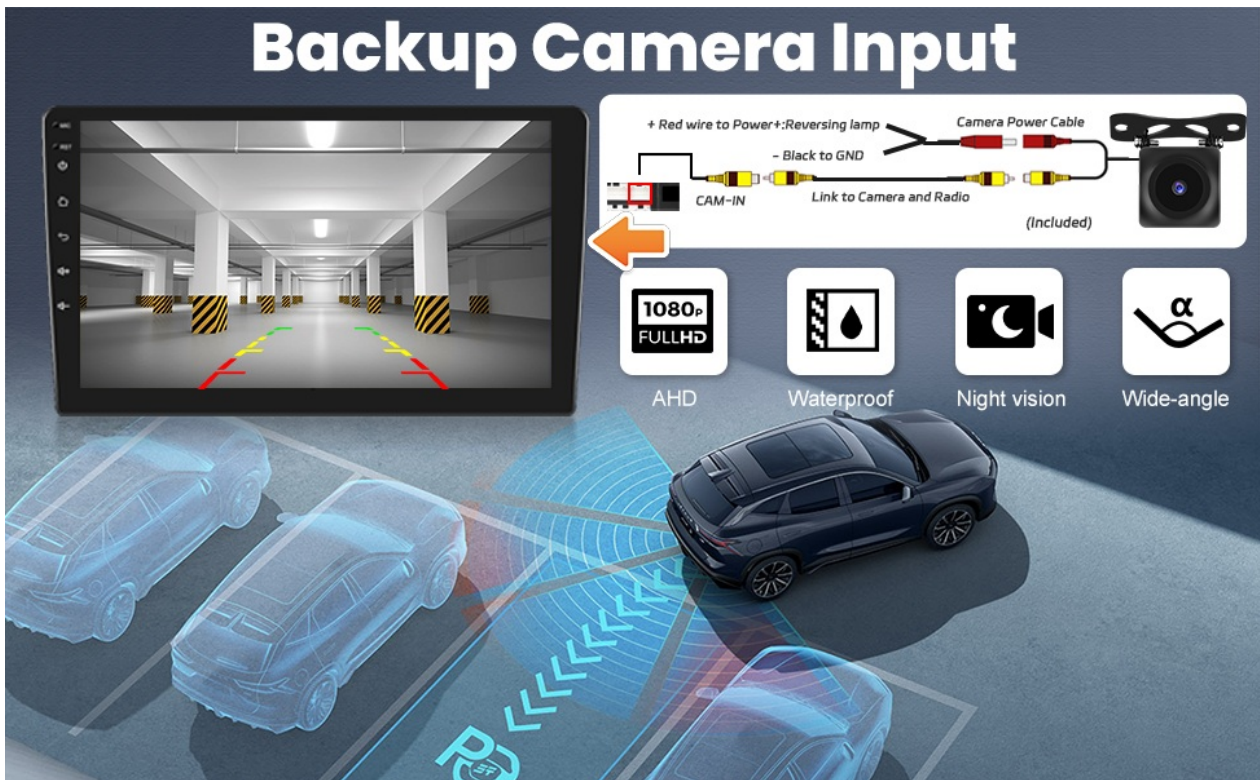


Image: Diagram showing the connection of the AHD backup camera and its features, including 1080P Full HD, waterproof, night vision, and wide-angle view.

5. MEDIA INTEGRATION

5.1 Product Function Display Video

Your browser does not support the video tag.

Video: This video demonstrates various functions of the GOHHDL Android 13 Car Stereo, including UI navigation, app usage, and general system responsiveness.

6. MAINTENANCE

To ensure the longevity and optimal performance of your GOHHDL car stereo, follow these maintenance guidelines:

- **Cleaning:** Use a soft, dry cloth to clean the screen and exterior. Avoid abrasive cleaners or solvents that may damage the surface.
- **Software Updates:** Periodically check for software updates to ensure you have the latest features and bug fixes. Updates can typically be found in the system settings or on the manufacturer's website.
- **Temperature Control:** Avoid exposing the unit to extreme temperatures. Prolonged exposure to direct sunlight or very cold conditions can affect performance and lifespan.
- **Cable Connections:** Ensure all cables are securely connected. Loose connections can lead to intermittent functionality.

7. TROUBLESHOOTING

If you encounter issues with your car stereo, refer to the following common troubleshooting steps:

Problem	Possible Cause	Solution
Unit does not power on	Loose power connection, blown fuse, vehicle battery issue.	Check power cable connections. Inspect vehicle fuses. Verify vehicle battery health.
No sound	Volume too low, incorrect audio source, loose speaker wires.	Increase volume. Select correct audio source. Check speaker wire connections.
Touchscreen unresponsive	System freeze, software issue.	Restart the unit (press and hold power button). If issue persists, perform a factory reset (refer to settings menu).
GPS not working	GPS antenna not connected or obstructed, software issue.	Ensure GPS antenna is properly connected and has a clear view of the sky. Check GPS settings in the unit.
CarPlay/Android Auto not connecting	Incorrect phone settings, incompatible cable, software issue.	Ensure Bluetooth and Wi-Fi are enabled on your phone. Try a different USB cable. Check phone permissions for Mirror Link/CarPlay/Android Auto.
Backup camera not displaying	Loose camera connection, incorrect camera settings.	Check camera input cable connection. Verify camera type settings in the unit's factory settings.

If these steps do not resolve the issue, please contact GOHDDL customer support.

8. SPECIFICATIONS

Feature	Detail
Operating System	Android 13
Processor	8-Core
RAM	4GB
ROM	64GB
Display	10.1" IPS Touchscreen
Resolution	1280x720
Wireless Connectivity	Bluetooth 5.0, Wi-Fi
Navigation	GPS (Google Maps pre-installed, offline map support)
Audio Processing	32EQ DSP
Radio	FM/RDS (87.5-108 FM)

Feature	Detail
Video Playback	1080P HD
Special Features	Wireless Apple CarPlay, Android Auto, Split Screen, Mirror Link, Steering Wheel Control, 59 UI Desktop Themes, AHD Backup Camera Input
Compatible Vehicles	Hyundai Tucson IX35 (2010-2015)
Item Model Number	A7146A3454H1MI2
Item Weight	4.86 pounds
Package Dimensions	15.35 x 13.39 x 6.26 inches

9. WARRANTY AND SUPPORT

GOHHDL provides the following support for this product:

- **30-Day Money-Back Service:** If you are not satisfied with your purchase, you may be eligible for a refund within 30 days.
- **24-Month After-Sales Support:** The product is covered by a 24-month after-sales support period.
- **7*16 Hours Technical Support:** Technical assistance is available 7 days a week, 16 hours a day, to help with installation and operation issues.
- **Lifetime Technical Support:** GOHHDL offers lifetime technical support for all its products.

For technical assistance or warranty claims, please contact GOHHDL customer service through the platform where you purchased the product or refer to the contact information provided in your package.