

BEBANG YW-3039

BEBANG YW-3039 WiFi Digital Microscope User Manual

Model: YW-3039 | Brand: BEBANG

1. INTRODUCTION

This manual provides detailed instructions for the BEBANG YW-3039 WiFi Digital Microscope. This device is designed for observing microscopic details with 50X to 1000X magnification, offering both wireless connectivity for smartphones and tablets, and USB connectivity for computers. It is suitable for various applications including educational purposes, coin inspection, electronics repair, and general scientific exploration.



The BEBANG YW-3039 functions as both a microscope and a digital camera, capable of capturing high-resolution photos and videos of magnified subjects like coins and circuit boards.

2. PRODUCT FEATURES

- **Dual Connectivity:** Supports wireless connection via WiFi to Android (4.0+) and iOS (8.0+) mobile

devices, and wired connection via USB to Windows (XP/7/8/10/11) and MacOSx (11.0+) computers.

- **High Magnification:** Offers 50X to 1000X stepless magnification for detailed observation.
- **High Definition Output:** Provides 1920x1080 resolution for clear images and videos.
- **Adjustable Stand:** Features a two-stage stand design for flexible angle and height adjustments, ensuring stable viewing.
- **Integrated LED Illumination:** Equipped with 8 LED lights offering three levels of brightness for optimal viewing in various conditions.
- **Photo and Video Capture:** Easily capture images and record videos directly through the companion application.
- **Portable Design:** Lightweight and compact, making it convenient for transport and use in different environments.



Key components and features of the BEBANG YW-3039 Digital Microscope.

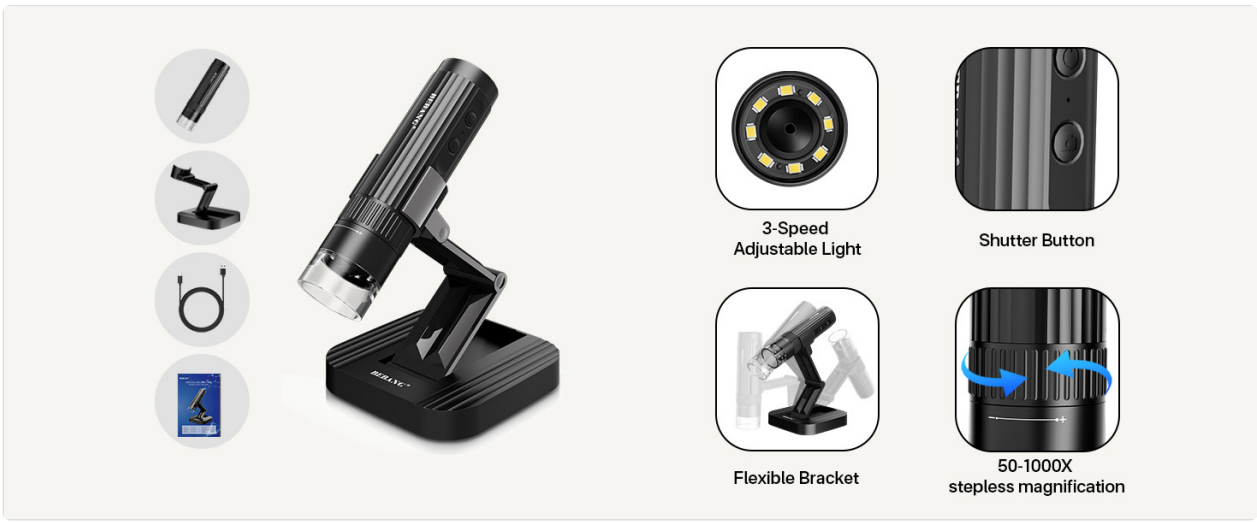
3. SETUP GUIDE

3.1 Mobile Device Setup (WiFi)

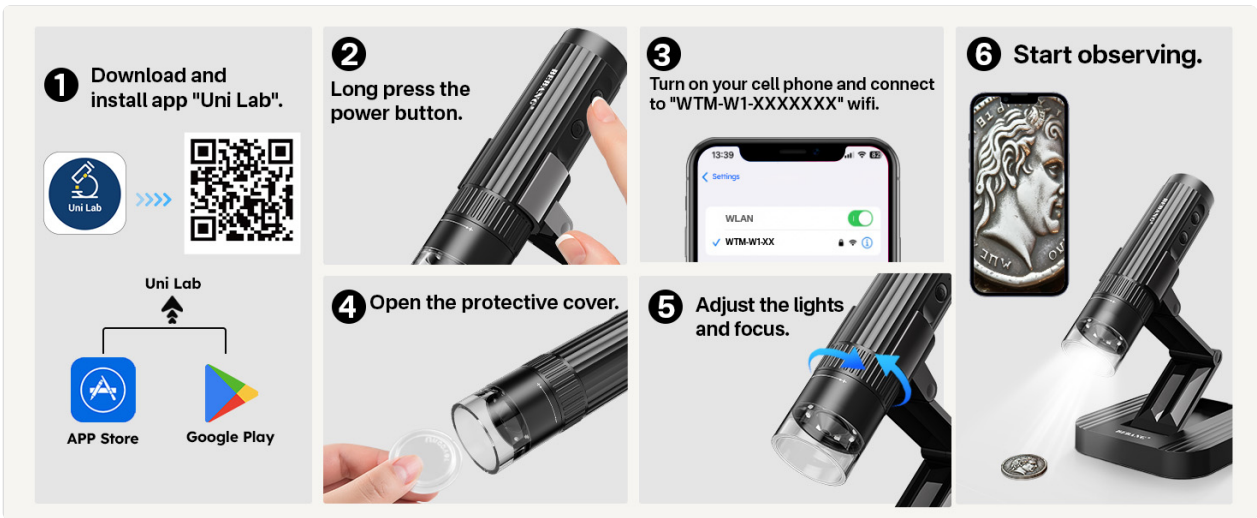
1. **Download the App:** Scan the QR code or search for "Uni Lab" in the App Store (iOS) or Google Play Store (Android) to download and install the application. [Download Uni Lab App](#)
2. **Power On:** Long press the power button on the microscope to turn it on.
3. **Connect to WiFi:** On your mobile device, go to WiFi settings and connect to the network named "WTM-W1-XXXXXXX" (the exact name may vary slightly). Note that this is a direct connection to the microscope and will not provide internet access.
4. **Open Protective Cover:** Remove the clear protective cover from the microscope lens.
5. **Start Observing:** Open the "Uni Lab" app. You should now see the live feed from the microscope.

3.2 Computer Setup (USB)

1. **Connect via USB:** Connect the microscope to your computer using the provided USB cable.
2. **Open Camera Application:**
 - **Windows:** Open the built-in "Camera" application. If your computer has multiple cameras, you may need to switch to the microscope's feed using the 'flip' or 'change camera' button within the application.
 - **MacOS:** Open applications like "Photo Booth" or "QuickTime Player" and select the microscope as the video input source.
3. **Open Protective Cover:** Remove the clear protective cover from the microscope lens.
4. **Start Observing:** The live feed from the microscope should now be visible on your computer screen.



Visual guide for connecting the microscope to a mobile device.



Compatibility overview for WiFi and USB connections.

4. OPERATING INSTRUCTIONS

4.1 Adjusting Magnification and Focus

The microscope features a focus ring on its barrel. Rotate this ring to adjust the focus and achieve the desired magnification level (50X-1000X). For optimal stability, use the included stand.



Rotate the focus ring for stepless magnification adjustment.

4.2 Adjusting LED Illumination

The microscope is equipped with 8 adjustable LED lights. Use the light adjustment controls on the microscope body or within the app to select one of the three brightness levels. Proper illumination is crucial for clear viewing.



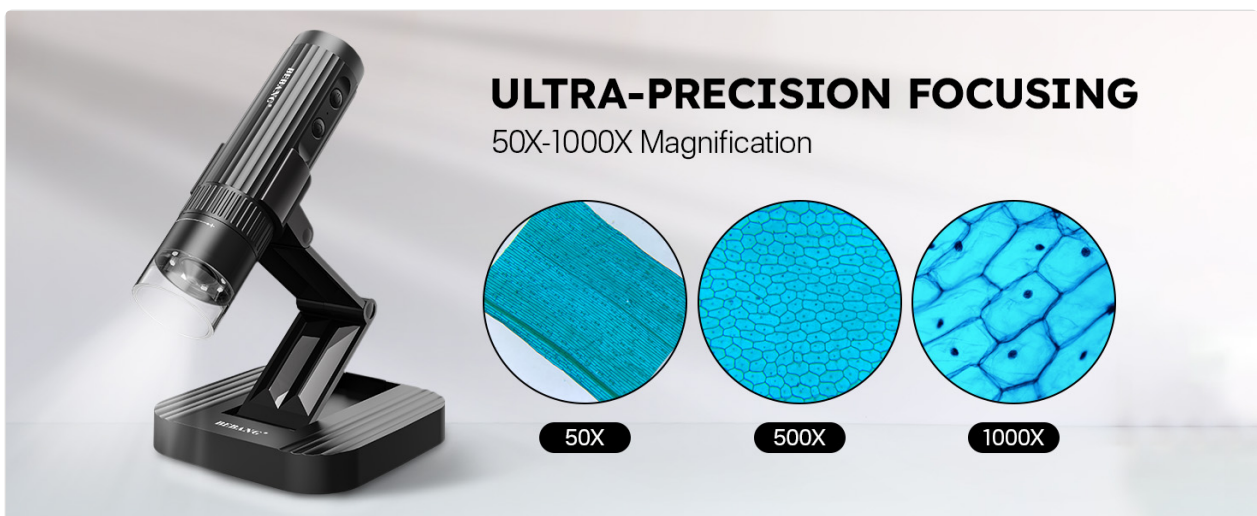
Adjust the 8 LED lights to achieve optimal brightness for your observation.

4.3 Capturing Photos and Videos

While viewing through the app or computer software, you can capture images or record videos. Use the dedicated button on the microscope device or the capture controls within the application to save your observations.

4.4 Digital Zoom (Mobile App Only)

When connected to a mobile device via WiFi, the "Uni Lab" app may offer additional digital zoom functionality (e.g., 1X-4X) using on-screen +/- buttons. This feature is typically not available when connected to a PC via USB.



Utilize the digital zoom feature within the mobile app for further magnification.

5. MAINTENANCE

5.1 Cleaning

- Use a soft, dry cloth to clean the microscope body.
- For the lens, use a specialized lens cleaning cloth and solution. Avoid abrasive materials or harsh chemicals.
- Ensure the device is powered off before cleaning.

5.2 Storage

- Store the microscope in a cool, dry place away from direct sunlight and extreme temperatures.
- Keep the protective lens cover on when not in use to prevent dust accumulation and scratches.

5.3 Battery Care

- Charge the microscope's battery regularly, even if not in frequent use, to maintain battery health.
- Avoid fully discharging the battery for extended periods.

6. TROUBLESHOOTING

Q: Cannot connect to WiFi or no image on mobile device.

A: Ensure the microscope is powered on. Go to your phone's WiFi settings and confirm you are connected to the microscope's direct WiFi network (e.g., "WTM-W1-XXXXXXX"). Remember this network does not provide internet access. Close and reopen the "Uni Lab" app.

Q: Image is blurry or difficult to focus.

A: Rotate the focus ring on the microscope barrel slowly until the image is clear. Ensure the clear protective lens cover has been removed. Adjust the distance between the microscope lens and the object. Use the adjustable stand for stability to minimize shaking. Adjust the LED brightness for better contrast.

Q: No image when connected to a computer via USB.

A: Verify the USB cable is securely connected to both the microscope and the computer. On Windows, open the "Camera" application and ensure the microscope is selected as the active camera device. On MacOS, check applications like "Photo Booth" or "QuickTime Player" for camera input selection.

Q: App displays non-English text or behaves unexpectedly.

A: Ensure your "Uni Lab" app is updated to the latest version. Some minor interface elements might occasionally appear in other languages; this is typically a software-side issue that may be resolved in future updates.

Q: Magnification does not seem to reach 1000X.

A: The 50X-1000X refers to the optical magnification range. Digital zoom available in the mobile app can further enlarge the image. Ensure you are adjusting the focus ring correctly to achieve the maximum optical magnification.

7. SPECIFICATIONS

| | |
|----------------------------|-----------|
| Model Number | YW-3039 |
| Brand | BEBANG |
| Magnification Range | 50X-1000X |
| Resolution | 1920x1080 |

| | |
|---------------------------------------|--|
| Light Source | 8 LED Lights (3 brightness levels) |
| Connectivity | WiFi (2.4GHz), USB |
| Compatible Operating Systems | Android 4.0+, iOS 8.0+, Windows XP/7/8/10/11, MacOSx 11.0+ |
| Power Source | Battery Powered (5 Volts) |
| Product Dimensions (L x W x H) | 3.74" x 3.78" x 7.48" |
| Item Weight | 290 Grams |

8. WARRANTY INFORMATION

The BEBANG YW-3039 WiFi Digital Microscope comes with a **1-year warranty** from the date of purchase. This warranty covers manufacturing defects and malfunctions under normal use. Please retain your proof of purchase for warranty claims. The warranty does not cover damage caused by misuse, accidents, unauthorized modifications, or improper maintenance.

9. SUPPORT

For further assistance, technical support, or warranty inquiries, please refer to the official BEBANG website or contact their customer service department. Contact information can typically be found on the product packaging or the manufacturer's website.