

## Manuals+

[Q & A](#) | [Deep Search](#) | [Upload](#)

manuals.plus /

- › [SUNTEKCAM](#) /
- › [SUNTEKCAM 4G LTE HC801Pro Hunting Camera User Manual](#)

## SUNTEKCAM HC801Pro

# SUNTEKCAM HC801Pro 4G LTE Hunting Camera User Manual

Model: HC801Pro

## INTRODUCTION

---

Thank you for choosing the SUNTEKCAM HC801Pro 4G LTE Hunting Camera. This advanced camera is designed for wildlife surveillance, offering high-resolution images and videos, robust night vision capabilities, and 4G connectivity for real-time monitoring. This manual provides detailed instructions for setup, operation, and maintenance to ensure optimal performance of your device.

## PACKAGE CONTENTS

---

Please verify that all items listed below are included in your package:

- 1 x SUNTEKCAM HC801Pro 4G LTE Hunting Camera
- 1 x 32GB Micro SD Memory Card
- 1 x USB Cable
- 1 x Mounting Strap
- 1 x Metal Fixed Bracket
- 1 x User Manual
- **Note: Batteries are not included.**



Image: The SUNTEKCAM HC801Pro camera, its antenna, and a smartphone showing the live feed from the camera, along with various accessories.

## SETUP GUIDE

---

### 1. Battery Installation

The HC801Pro requires 1.5V batteries (not included). Open the battery compartment on the camera and insert the batteries, ensuring correct polarity.

### 2. SD Card and SIM Card Insertion

Locate the SD card slot and SIM card slot.

1. Insert the provided 32GB Micro SD card into the SD card slot until it clicks into place.
2. Insert a prepaid SIM card into the SIM card slot. **Important: Only prepaid SIM cards are supported. SIM cards**

with PIN protection are not supported.

### 3. Powering On and App Connection

Follow these steps to power on the camera and connect it to the mobile application:

1. Insert the SD card and SIM card into the 4G hunting camera.
2. Turn on the camera. The signal bar and cloud indicator should turn green, indicating successful network connection.
3. Download the "SuntekCam" application on your mobile phone.
4. Use the application to scan the QR code located on the camera to establish a connection.
5. If connection issues arise, please refer to the troubleshooting section or contact support.

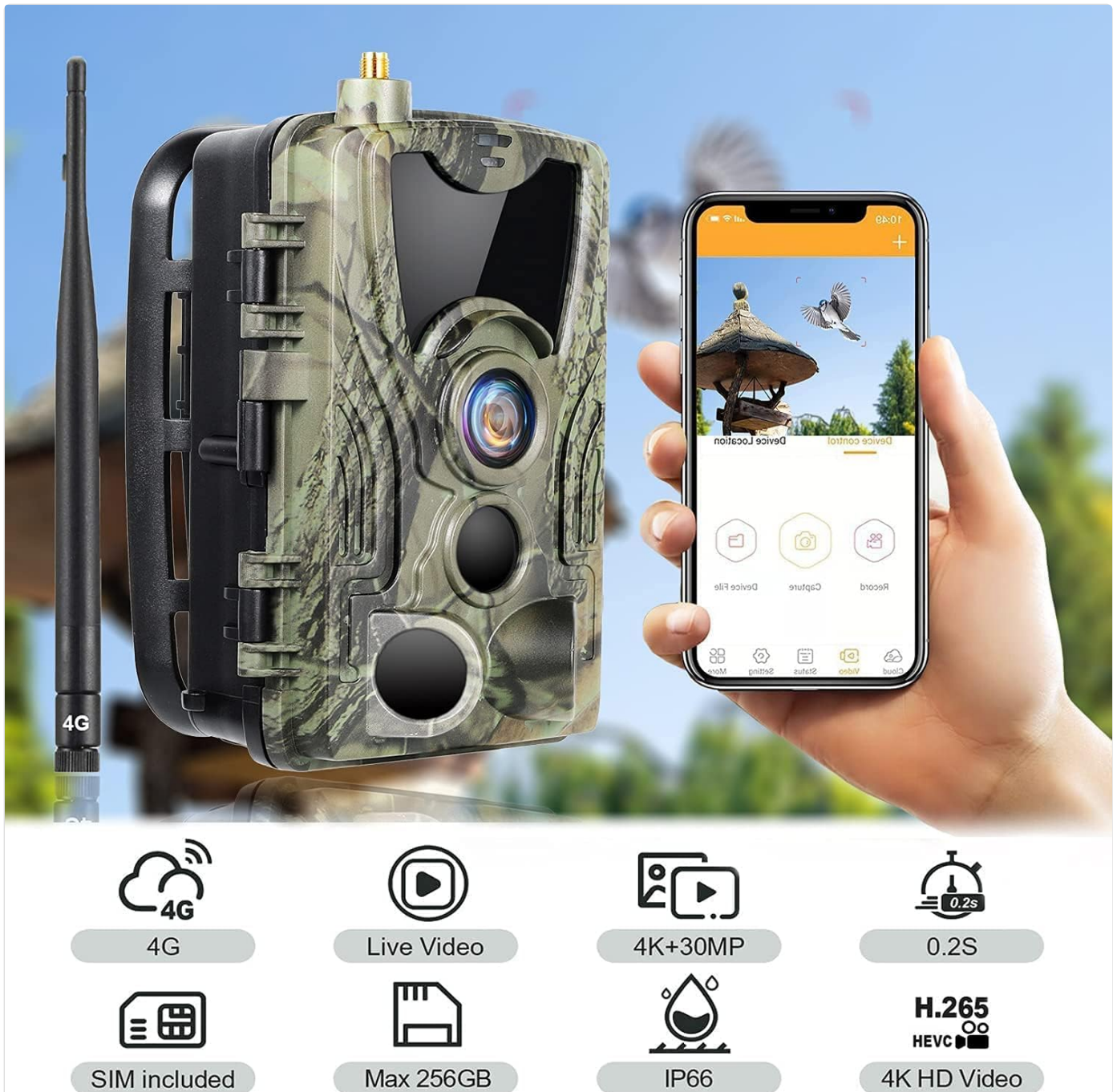


Image: Key features of the HC801Pro camera, including 4G, live video, high resolution, fast trigger speed, and robust design.

### OPERATING MODES

The HC801Pro camera offers two primary operating modes:

## 1. Test Mode

In Test Mode, the camera allows for real-time monitoring. You must manually send instructions via the "SuntekCam" mobile application to capture videos or photos. This mode is ideal for initial setup, aiming, and verifying camera functionality.

## 2. ON Mode

In ON Mode, the camera automatically detects motion and captures footage. It will take photos or videos based on its internal settings and detected movement. You can refresh the application's reception page at any time to receive the latest video/image for real-time situation verification.

## FEATURES AND PERFORMANCE

---

### High-Resolution Imaging

The HC801Pro delivers vivid 30MP images and sharp 4K videos, ensuring clear and detailed recordings. It supports simultaneous photo and video capture.

## 30MP Clear Image / 4K Ultra HD Video

Can take pictures and videos at the same time

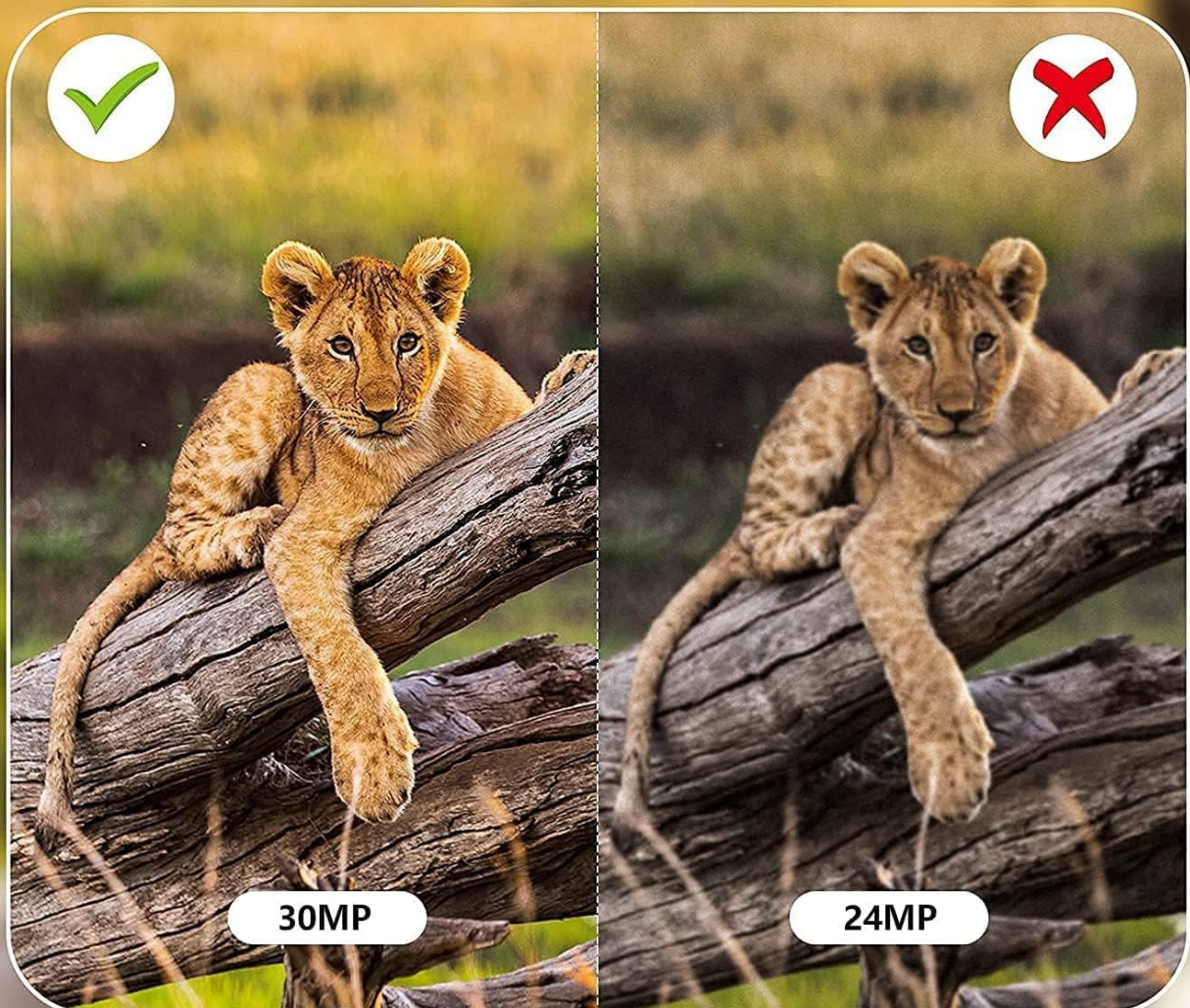


Image: A visual comparison highlighting the superior clarity and detail of 30MP images compared to 24MP.

## 4K Sharper Video Resolution

Recording super clear video and providing a wonderful visual experience



Image: An example of 4K video resolution, showcasing sharp and clear footage.

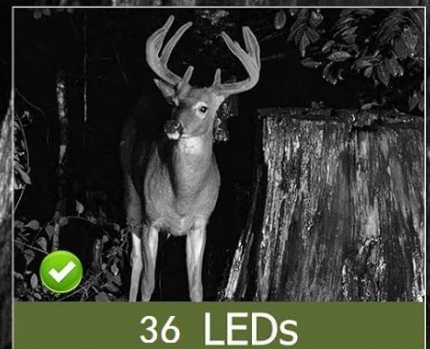
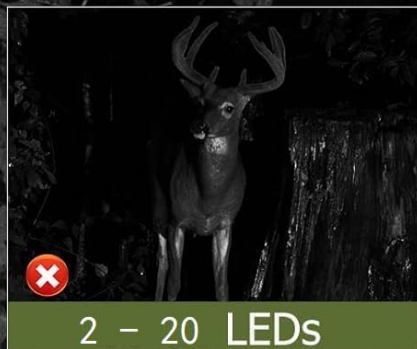
### Advanced Night Vision

Equipped with 940nm invisible infrared anti-reflection technology and 36 LED infrared lights, the camera provides a night vision capacity of up to 65 feet (30 meters). This ensures clear images even in complete darkness, without disturbing wildlife.

# Super Night Vision

36 LED Infrared Lights, 940nm Non-Emitting,  
120° Detection Range, Night Vision Range Up to 30 m (100 ft)

 IMSI:



2023/09/25

03:05:58

34° C/93° F

0001



Image: A demonstration of the camera's superior night vision with 36 infrared LEDs, providing clear images in low light conditions.

## Durable and Weatherproof Design

Constructed with high-quality materials, the HC801Pro is designed to withstand harsh environmental conditions. It is IP66 waterproof, dustproof, and shockproof, ensuring normal operation in rain, snow, or dusty environments. It is suitable for use in deserts and rainforests.

# Safe to use in any weather conditions

4G



**IP66**  
WATERPROOF

Image: The camera mounted on a tree, shown operating reliably in rainy conditions, highlighting its IP66 waterproof rating.

## MAINTENANCE

---

To ensure the longevity and optimal performance of your SUNTEKCAM HC801Pro camera, follow these maintenance guidelines:

- **Cleaning:** Gently wipe the camera lens and housing with a soft, dry cloth. Avoid using abrasive cleaners or solvents that could damage the surface.
- **Battery Care:** If the camera will not be used for an extended period, remove the batteries to prevent leakage and potential damage.
- **Storage:** Store the camera in a cool, dry place away from direct sunlight and extreme temperatures.
- **SD Card Management:** Regularly back up important data from your SD card and format it periodically to maintain optimal performance.

## TROUBLESHOOTING

---

If you encounter issues with your HC801Pro camera, please refer to the following common problems and solutions:

Problem	Possible Cause	Solution
Camera does not power on.	Low or dead batteries; incorrect battery polarity.	Replace batteries with fresh ones; ensure correct battery orientation.
No signal/App connection issues.	SIM card not properly inserted; SIM card not prepaid; poor network coverage; incorrect QR code scan.	Reinsert SIM card; ensure SIM is prepaid and not PIN-protected; move camera to an area with better signal; rescan QR code carefully.
Poor image/video quality.	Dirty lens; insufficient lighting (for non-night vision); camera too far from subject.	Clean the camera lens; ensure adequate lighting or proper night vision activation; adjust camera placement.
Camera not detecting motion.	PIR sensor blocked; incorrect sensitivity settings; camera placed in high-traffic area with unwanted triggers.	Ensure PIR sensor is clear; adjust PIR sensitivity in settings; reposition camera to optimize detection area.

## SPECIFICATIONS

Feature	Detail
Model	HC801Pro
Image Resolution	30 MP
Video Resolution	4K
Connectivity	4G LTE, Wired
Night Vision	940nm Invisible IR LEDs (36 LEDs), up to 30m (100 ft)
Waterproof Rating	IP66
Trigger Speed	0.2 seconds
PIR Angle	Wide 120°
Storage	Supports Micro SD card up to 256GB (32GB included)
Power Source	Battery Powered (1.5 Volts)
Material	Metal
Dimensions (L x W x H)	10 x 5.5 x 17 cm
Weight	640 grams
Supported Languages	17 languages (including French)



**OURS**

**PK**



**OTHER**













 <b>30MP/4K</b>	<b>Photo Quality</b>	 <b>24MP/1080P</b>
 <b>Wide 120° PIR Angle</b>	<b>Lens</b>	 <b>Normal 90°-110°</b>
 <b>IP 66</b>	<b>Waterproof</b>	 <b>IP54</b>
 <b>1 to 9</b>	<b>Trigger Speed</b>	 <b>1 to 5</b>
 <b>YES</b>	<b>16GB SD Card Include</b>	 <b>No</b>
 <b>YES</b>	<b>EU SIM Card Include</b>	 <b>No</b>

Image: A comparative table illustrating the superior specifications of the HC801Pro against other cameras.

## WARRANTY AND SUPPORT

For any questions, technical support, or warranty inquiries regarding your SUNTEKCAM HC801Pro camera, please contact SUNTEKCAM customer service. Refer to the contact information provided in your product packaging or on the official SUNTEKCAM website.

If the connection does not succeed during setup, you can contact us at any time.