

EasyKeys TM221

EasyKeys RV Replacement Key for TriMark TM221 Instruction Manual

Model: TM221

1. PRODUCT OVERVIEW

This manual provides instructions for the EasyKeys RV Replacement Key, specifically designed for TriMark lock series TM201 through TM250. This key is cut on a TM4 key blank and is intended for use with compatible TriMark RV locking mechanisms.

Key features include:

- Custom cut for precise fit.
- Durable brass material construction.
- Compatibility with TriMark TM221 lock codes.



Figure 1: EasyKeys RV Replacement Key (TM221)

This image displays the physical appearance of the EasyKeys RV Replacement Key, showing its cut profile and the TM201 code stamped on the head. The key is made of brass and features a standard key blank design.

2. KEY IDENTIFICATION AND SETUP

Before using your replacement key, it is crucial to ensure you have the correct key code for your lock. This key is specifically for TriMark locks with the code TM221. Incorrect key codes will not operate your lock.

2.1. Locating Your Lock Code

Your lock code can typically be found in several locations:

- **On the original key:** The code is often stamped directly on the key head.
- **On the lock face:** Some locks have the code engraved or printed on the visible part of the lock cylinder.
- **On a label inside/behind the lock:** For RV doors or compartments, the code might be on a sticker or label located on the inside of the door panel or behind the lock mechanism.
- **On the cabinet/door label:** The manufacturer of your RV or cabinet may have included the lock code on a label near the lock or in the owner's manual.

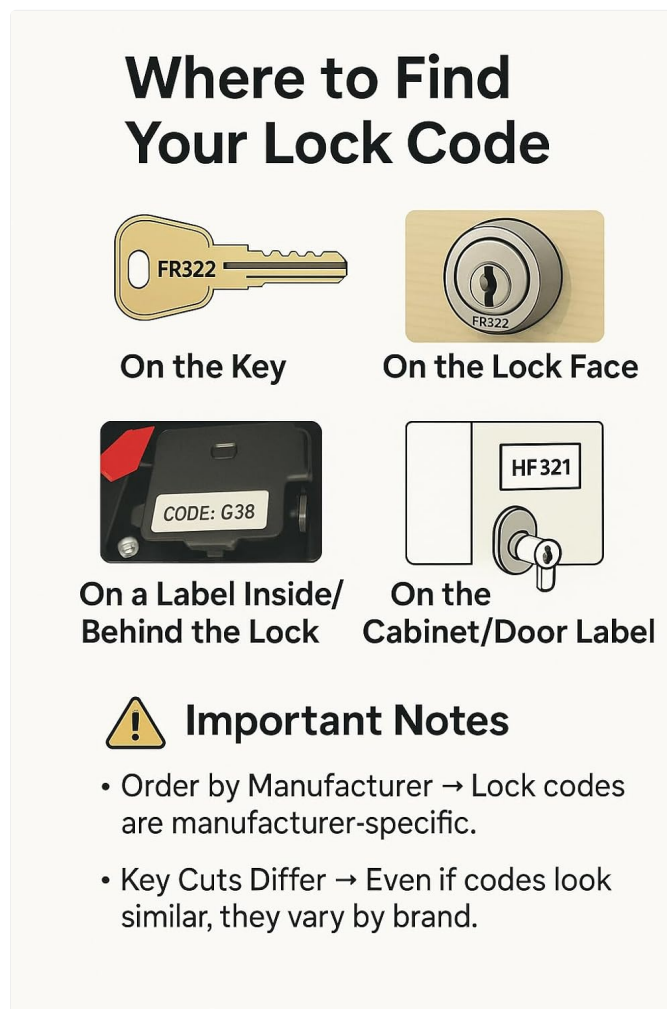


Figure 2: Common Locations for Lock Codes

This diagram illustrates various places where a lock code can be found: directly on the key, on the visible face of the lock cylinder, on a label located inside or behind the lock mechanism, or on a general cabinet/door label. It emphasizes the importance of verifying the code.

2.2. Important Considerations

- **Manufacturer Specificity:** Lock codes are specific to the manufacturer. Ensure your lock is a TriMark brand when using a TriMark series key.
- **Key Cut Variations:** Even if codes appear similar, key cuts can vary significantly between different brands. Always match the brand and the exact code.

3. OPERATING INSTRUCTIONS

Using your EasyKeys RV Replacement Key is straightforward. Follow these steps for proper operation:

- 1. Insert the Key:** Gently insert the key into the lock cylinder. Do not force the key if it does not slide in smoothly.
- 2. Turn the Key:** Once fully inserted, turn the key in the direction required to lock or unlock the mechanism. This is typically a quarter or half turn.
- 3. Remove the Key:** After the lock operates, return the key to its original insertion position (usually vertical) before gently pulling it out.

If the key does not turn or feels stiff, refer to the Troubleshooting section.

4. MAINTENANCE

Proper maintenance ensures the longevity and smooth operation of your key and lock.

- **Keep Clean:** Periodically wipe the key with a soft, dry cloth to remove dirt or debris.
- **Avoid Harsh Chemicals:** Do not use abrasive cleaners or harsh chemicals on the key, as this can damage the material.
- **Lubrication (for lock):** If the lock mechanism becomes stiff, apply a small amount of graphite lubricant or a silicone-based spray specifically designed for locks into the keyway. Do not lubricate the key itself.
- **Storage:** Store the key in a dry place, away from extreme temperatures or corrosive environments.

5. TROUBLESHOOTING

If you encounter issues with your replacement key, consider the following:

Problem	Possible Cause	Solution
Key does not insert fully.	Incorrect key code; debris in keyway; bent key.	Verify key code (TM221) matches lock. Inspect keyway for obstructions and clean if necessary. Check key for damage.
Key inserts but does not turn.	Incorrect key code; worn lock mechanism; lock is seized.	Confirm key code. Apply lock lubricant to the lock cylinder. If the lock is old or damaged, it may require professional service or replacement.
Key feels stiff or difficult to turn.	Lack of lubrication in lock; minor misalignment.	Apply a small amount of graphite or silicone-based lock lubricant into the lock cylinder. Gently wiggle the key while turning.
Key breaks in lock.	Excessive force; worn key; faulty lock.	Avoid applying excessive force. If a key breaks, professional locksmith assistance is recommended for removal and lock inspection.

6. SPECIFICATIONS

Feature	Detail
Brand	EasyKeys
Model Name	TM221

Feature	Detail
Compatible Lock Series	TriMark TM201 - TM250
Material	Brass
Lock Type	Cam (for compatible TriMark locks)
Dimensions (L x W x H)	0.5 x 0.5 x 1 inches (approximate)
Item Weight	4 ounces (approximate)
Special Features	Custom Cut Key, Durable

7. WARRANTY AND SUPPORT

For specific warranty information regarding your EasyKeys product, please refer to the terms provided at the time of purchase or contact the manufacturer directly. As a small business, EasyKeys is committed to customer satisfaction.

For further assistance, support, or to explore other products, please visit the official EasyKeys store:

[Visit the EasyKeys Store on Amazon](#)