

WOLTU SK039ws

WOLTU SK039ws 8-Cube Freestanding Bookshelf Instruction Manual

Model: SK039ws

1. PRODUCT OVERVIEW

The WOLTU SK039ws is a versatile 8-cube freestanding bookshelf designed for various living spaces such as living rooms, offices, and studies. This unit features a robust structure made from E1 particleboard with a melamine veneer, offering resistance to water and wear. It includes 8 compartments across 4 levels, with 4 cubes featuring doors for concealed storage and 4 open cubes for display.

Its compact design occupies minimal floor space while providing ample storage. The doors are equipped with cut-out handles and magnetic closures for easy access and dust protection. For enhanced safety, an anti-tip kit and non-slip feet are included.



Image 1.1: Front view of the WOLTU SK039ws 8-Cube Freestanding Bookshelf.

2. SAFETY INFORMATION

- **Do not overload:** The maximum load capacity for this unit is 50 kg. Distribute weight evenly across the shelves.
- **Anti-tip device:** Always install the provided anti-tip device to secure the bookshelf to the wall, especially in households with children or pets, to prevent accidental tipping.
- **Non-slip feet:** Ensure the non-slip feet are properly installed to enhance stability and protect your floor.
- **Assembly:** Follow all assembly instructions carefully. Do not skip steps or use unauthorized parts.
- **Placement:** Place the bookshelf on a flat, stable surface. Avoid placing it in high-traffic areas where it could be easily bumped.

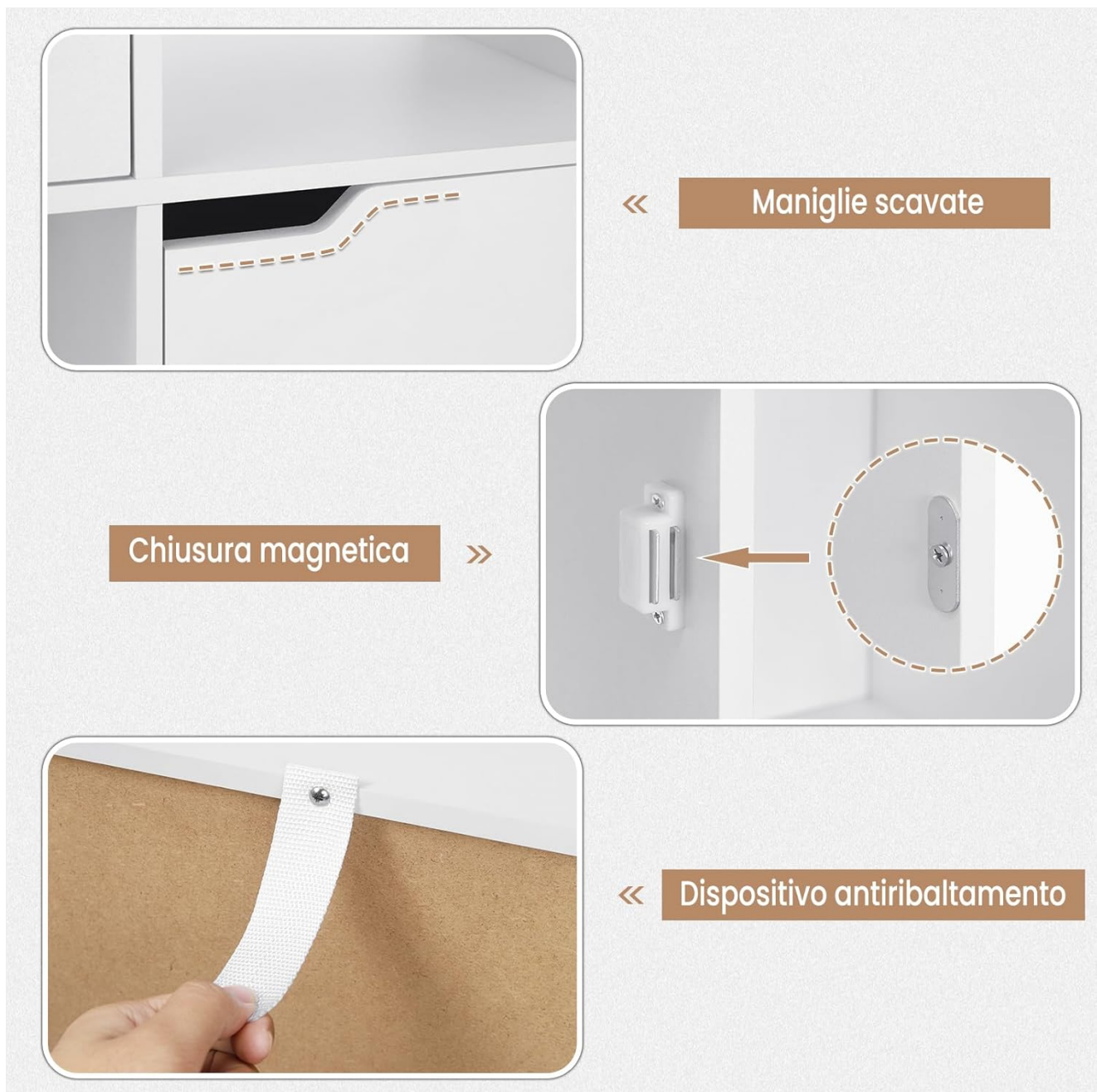


Image 2.1: Details of the anti-tip device, magnetic closure, and cut-out handle for safe and practical use.

3. PACKAGE CONTENTS

Before beginning assembly, verify that all components listed in the packaging are present and undamaged. Refer to the parts list provided in your physical instruction manual for specific component identification. Typically, the package includes:

- Wood panels (E1 particleboard with melamine veneer)
- Hardware kit (screws, dowels, connectors)
- Anti-tip device
- Non-slip feet
- Magnetic closures for doors
- Illustrated assembly instructions

4. ASSEMBLY INSTRUCTIONS

Assembly of the WOLTU SK039ws bookshelf is designed to be straightforward with clear, illustrated instructions. It is recommended to assemble the unit on a soft, clean surface to prevent scratches.

4.1 Tools Required (Not Included)

- Phillips head screwdriver
- Hammer (for dowels)

4.2 Step-by-Step Assembly

1. **Identify Parts:** Lay out all panels and hardware. Match them with the labels in the provided assembly diagram.
2. **Assemble Frame:** Connect the side panels to the base and top panels using the provided dowels and screws. Ensure all connections are secure.
3. **Install Shelves:** Insert the fixed shelves into the designated slots.
4. **Attach Back Panel:** Secure the back panel to the frame using small nails or screws. Ensure it is aligned correctly.
5. **Install Doors:** Attach the magnetic closures to the frame and the corresponding metal plates to the doors. Mount the doors using the hinges, ensuring they open and close smoothly. The cut-out handles are integrated into the door design.
6. **Attach Non-slip Feet:** Secure the non-slip feet to the bottom of the bookshelf.
7. **Install Anti-tip Device:** Attach one end of the anti-tip strap to the top rear of the bookshelf and the other end to a wall stud using appropriate wall anchors (not always included, depending on wall type). This step is crucial for safety.



Dimensioni

Capacità di carico totale: 50kg



178cm



120.5cm

Image 4.1: Dimensions of the assembled bookshelf (60cm width x 30cm depth x 120.5cm height).

5. USAGE AND OPERATING INSTRUCTIONS

The WOLTU SK039ws bookshelf is designed for versatile storage and display. Its 8 compartments, including 4 with doors, allow for organized storage of various items.

5.1 Organizing Items

- **Open Cubes:** Ideal for displaying decorative items, books, photo frames, or frequently accessed items.
- **Closed Cubes (with doors):** Use these for items you wish to keep out of sight, such as documents, toys, or personal belongings, protecting them from dust.

5.2 Placement Recommendations

- **Study/Office:** Store books, files, and office supplies.
- **Living Room:** Display decor, store media, or organize magazines.
- **Bedroom:** Use as a compact wardrobe for folded clothes or accessories.
- **Children's Room/Nursery:** Organize toys and children's books.

Plurivalente



Scaffale portaoggetti
in soggiorno



Portabiti in
camera da letto



Libreria in studio



Portagiocattoli in
cameretta dei bambini



Image 5.1: Examples of the bookshelf's versatile use in different rooms.

6. MAINTENANCE

To ensure the longevity and appearance of your WOLTU SK039ws bookshelf, follow these maintenance guidelines:

- **Cleaning:** Wipe surfaces with a soft, damp cloth. Avoid abrasive cleaners or harsh chemicals that could damage the melamine veneer.
- **Spills:** Clean up spills immediately to prevent moisture damage to the wood-based material.
- **Sunlight Exposure:** Avoid prolonged direct sunlight exposure to prevent fading or discoloration.
- **Regular Checks:** Periodically check all screws and connections to ensure they remain tight. Re-tighten if necessary.
- **Anti-tip Device:** Regularly inspect the anti-tip device to ensure it is securely attached to both the bookshelf and the wall.

7. TROUBLESHOOTING

If you encounter any issues with your WOLTU SK039ws bookshelf, refer to the following common problems and solutions:

Problem	Possible Cause	Solution
Bookshelf is wobbly or unstable.	Uneven floor; loose connections; anti-tip device not installed or loose.	Ensure the bookshelf is on a level surface. Check and tighten all screws. Install or re-secure the anti-tip device to the wall.
Doors do not close properly or are misaligned.	Hinges are loose or incorrectly installed; magnetic closure misaligned.	Check and adjust hinge screws. Ensure the magnetic closure and its metal plate are aligned correctly.
Scratches or damage during assembly.	Lack of protective surface during assembly.	Always assemble on a soft, clean surface. Minor scratches can sometimes be touched up with furniture repair pens.

8. SPECIFICATIONS

Feature	Detail
Brand	WOLTU
Model	SK039ws
Color	White
Product Dimensions (D x W x H)	30 x 60 x 120 cm
Item Weight	21.3 kg
Maximum Load Capacity	50 kg
Material	Engineered Wood (E1 Particleboard with Melamine Veneer)
Number of Shelves	8 (cubes)
Mounting Type	Freestanding (Floor Mount)
Special Features	Easy to clean, Space-saving, Stable, Anti-tip device, Non-slip feet, Doors with magnetic closure
Style	Scandinavian

9. WARRANTY AND SUPPORT

WOLTU products are designed for quality and durability. For information regarding warranty coverage, please refer to the documentation included with your purchase or visit the official WOLTU website. If you require assistance with assembly, missing parts, or have any questions about your product, please contact WOLTU customer support through their official channels or the retailer from whom you purchased the item. For more information about WOLTU products, visit the [WOLTU Store on Amazon](#).

