

Quntis LI-HY-0212-GY

Quntis Monitor Light Bar with Remote (Model LI-HY-0212-GY) Instruction Manual

Enhancing Visual Comfort and Workspace Efficiency

1. INTRODUCTION

Thank you for choosing the Quntis Monitor Light Bar with Remote. This device is designed to provide optimal illumination for your workspace, reducing eye strain and enhancing visual comfort. It features dual light sources, a patented sliding weighted clip for broad compatibility, and smart remote control for easy adjustments.

2. SAFETY INFORMATION

- Ensure the product is used within its specified voltage (5V).
- Do not disassemble or modify the product.
- Keep away from water and high humidity environments.
- Avoid direct eye exposure to the light source for prolonged periods.
- Use only the provided Type-C cable for power connection.

3. PACKAGE CONTENTS

- Quntis Monitor Light Bar
- Wireless Remote Control
- Type-C USB Cable
- User Manual



Figure 1: Quntis Monitor Light Bar and Remote Control. The image displays the light bar, designed to sit atop a monitor, and a circular wireless remote control with various buttons for light adjustments.

4. SETUP

4.1. Installing the Light Bar

1. Mount the light bar into the clip. Ensure it is securely seated.
2. Adjust the patented sliding weighted clip to fit your monitor's thickness.
 - For extra thin monitors: Slide the clip to its minimum width.
 - For thick monitors: Slide the clip to its maximum width.
 - For curved monitors: Pull apart the front of the clip to accommodate the curvature.
3. Place the light bar assembly on top of your monitor, ensuring the weighted clip rests securely against the back of the monitor.
4. Connect the Type-C USB cable to the light bar and a suitable 5V 1.5A (7.5W) power source (e.g., computer USB port, USB wall adapter).

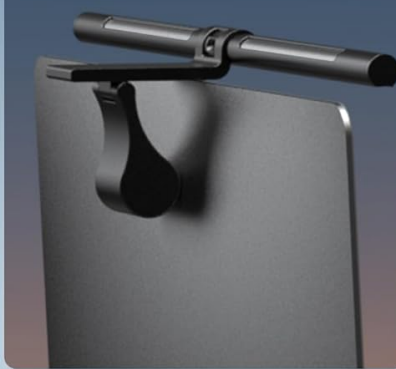
Patented Sliding Weighted Clip



Irregular Monitor



Ordinary Monitor



Curved Monitor



Figure 2: Patented Sliding Weighted Clip. This image illustrates how the light bar's clip adjusts to fit irregular, ordinary, and curved monitors, highlighting its versatile design.



Figure 3: Designed for Curved Monitors. The image shows the light bar mounted on a curved monitor, with an arrow indicating how the front part of the clip can be pulled apart for proper fit.

4.2. Remote Control Setup

The remote control typically comes pre-paired. Insert 3 AA batteries (not included) into the remote control. The main power button on the remote emits a faint glow, indicating it is in standby mode.



Figure 4: Remote Control Features. This image labels the various buttons on the wireless remote control, including Decrease Button, Increase Button, Brightness Mode, Color Temperature Mode, Main Power On/Off, and Back Light Brightness On/Off.

Remote Control Usage Tips: The remote control enters standby sleep mode to save power when not in use. To operate the remote control, simply press any button on the control interface to activate it. Once the button's orange light is on, press the desired button again to adjust the light bar.



Figure 5: Remote Control Usage Tips. This image provides a visual guide to using the remote control, detailing how to activate it from standby and use its various functions.

Your browser does not support the video tag.

Video 1: How to Properly Use Monitor Light Bar ScreenLinear Glow Plus. This video demonstrates the installation process of the Quntis Monitor Light Bar and the basic functions of its remote control, including turning it on/off and adjusting settings.

5. OPERATING INSTRUCTIONS

5.1. Power On/Off

Press the **Main Power On/Off** button on the remote control to turn the light bar on or off.

5.2. Adjusting Brightness

To adjust brightness: Long-press the **Decrease Button (-)** or **Increase Button (+)** for stepless dimming. Alternatively, quick-tap the **Brightness Mode** button to cycle through 4 preset levels (25%, 50%, 75%, 100%).

5.3. Adjusting Color Temperature

To adjust color temperature: Long-press the **Decrease Button (-)** or **Increase Button (+)** for stepless adjustment. Alternatively, quick-tap the **Color Temperature Mode** button to cycle through preset color temperatures (e.g., 3000K, 4000K, 5000K, 6500K).



Figure 6: Backlight Dimmable and Color/Brightness Adjustment. This image visually demonstrates the stepless adjustment of both backlight brightness and front light color temperature and brightness using the remote control.

5.4. Switching Lighting Modes

The light bar offers three eye-comfort lighting modes:

- **Front Lighting Mode:** For focused illumination on your desk area, enhancing focus during work.
- **Backlighting Mode:** To create a cozy ambient light for relaxation.
- **Front & Back Lighting Mode:** For balanced uniform illumination, improving overall eye comfort.

Use the **Back Light Brightness On/Off** button on the remote to toggle the backlight.

3 Light Modes



Figure 7: Three Light Modes. This image displays three distinct lighting scenarios: Work Mode (front light only), Immersive Mode (backlight only), and Design Mode (both front and back lights), illustrating their respective uses.



Figure 8: Three Light Modes for Daily Needs. This image further illustrates the three lighting modes (Work Mode, Immersive Mode, Design Mode) with visual examples of a user in each setting, emphasizing their utility for different tasks.

6. KEY FEATURES

- **Ultra Bright & Wider Illumination:** Extended lamp bar length (20.1 inches) and backlighting area (6.29 inches) for comprehensive lighting.
- **Eye Caring No Glare:** Unique asymmetrical optical design directs light onto the desk, not the screen, preventing glare and reflections.
- **High Ra95 CRI:** Enhances vibrant and true-to-life colors, crucial for professionals in color-sensitive work, minimizing eye fatigue.
- **Flicker-Free Lighting:** Equipped with 88 high-quality LED beads for front lighting and 55 for backlighting, ensuring stable light without visible flicker or blue light hazards.
- **Webcam Friendly Design:** The L-Type C cable does not obstruct overhead space, allowing for easy camera placement.



Figure 9: Optimal Uniform Illumination. This image shows the light bar providing even illumination across a desk, with measurements indicating Lux levels at different points, demonstrating wide and bright coverage.



Figure 10: Asymmetric Light Source. This image illustrates the 45-degree asymmetric light distribution, showing how light is directed onto the desk area without causing screen glare.

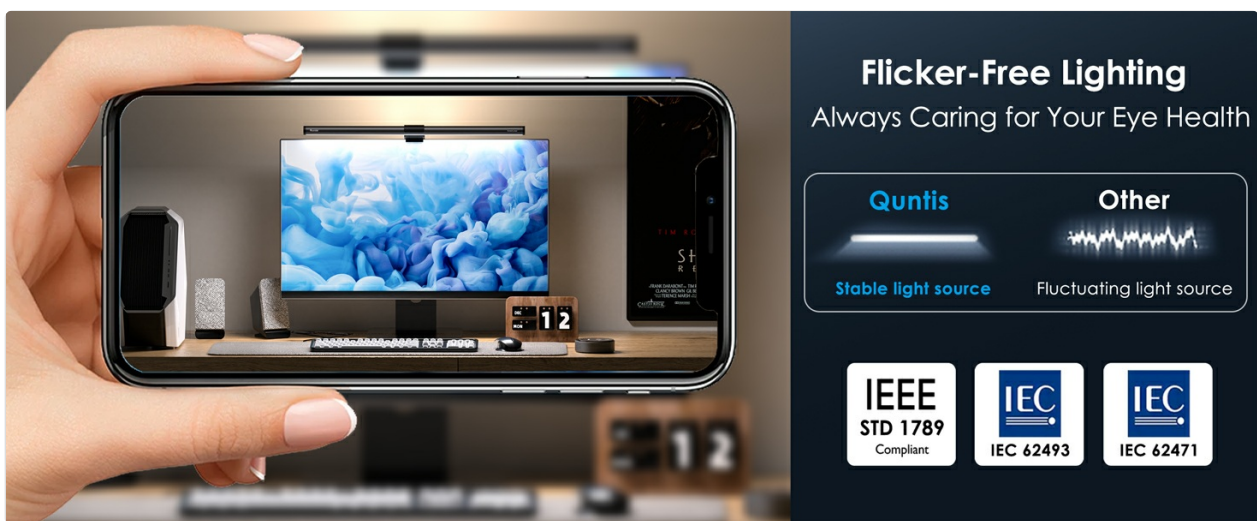


Figure 11: Flicker-Free Lighting. This image compares the stable light source of Quntis with a fluctuating light source, emphasizing the eye-caring benefits and compliance with IEEE STD 1789, IEC 62493, and IEC 62471 standards.



Figure 12: Webcam Friendly Design. This image highlights the L-Type C cable design, which ensures the monitor light bar does not obstruct the space above the monitor, allowing for convenient webcam placement.

7. MAINTENANCE

- Clean the light bar and remote control with a soft, dry cloth.
- Do not use abrasive cleaners or solvents.
- Ensure the device is unplugged before cleaning.

8. TROUBLESHOOTING

Problem	Possible Cause	Solution
Light bar does not turn on.	No power or loose connection.	Check USB cable connection. Ensure power source is active.
Remote control is unresponsive.	Batteries are low or not inserted correctly. Remote is in sleep mode.	Replace AA batteries. Press any button to wake the remote from sleep mode.
Light bar flickers.	Unstable power supply.	Connect to a stable power source (e.g., a wall adapter with sufficient wattage).
Light bar does not fit monitor.	Clip not adjusted correctly.	Adjust the sliding weighted clip according to your monitor type (thin, thick, curved).

9. SPECIFICATIONS

Feature	Detail
Model Number	LI-HY-0212-GY
Product Dimensions	20.08"D x 0.78"W x 0.78"H
Item Weight	930 Grams (2.05 pounds)
Material	Aluminum
Finish Type	Metallic
Light Source Type	LED
Number of Light Sources	143 (88 front, 55 backlight)
Power Source	Corded Electric (USB-C)
Voltage	5V
Control Method	Remote
Special Feature	Cordless Remote
Recommended Uses	Reading, Study, Working
Indoor/Outdoor Usage	Indoor



10. WARRANTY AND SUPPORT

Quntis is dedicated to providing excellent products and customer service. If you have any questions about your Monitor Light Bar, please refer to the following support information:

- **Warranty:** 1-Year limited warranty (no fix, change only).
- **Response Time:** Customer support typically responds within 24 hours.
- **Returns/Exchanges:** Free return & exchange within 30 days.
- **Contact:** For assistance, please raise a Q&A or contact Quntis directly through their official channels.

© 2024 Quntis. All rights reserved.

Related Documents - LI-HY-0212-GY

	<p>Quntis LI-HY-0208-BK-QU Remote Curved Screen Eye Protection Lamp User Manual</p> <p>User manual for the Quntis LI-HY-0208-BK-QU remote curved screen eye protection lamp, detailing setup, features, and operation. This document provides a summary of the product and manual's purpose due to the extensive diagrams in the original PDF.</p>
	<p>Quntis LI-HY-0206-BK-QU _____</p> <p>Quntis LI-HY-0206-BK-QU</p>



[Quntis RGB Eye-Care Lamp: Pairing and Quick Start Guide](#)

A concise guide for pairing and operating the Quntis RGB Eye-Care Lamp, designed for curved screens. Includes pairing instructions, precautions, and feature highlights.



[Quntis Outdoor Solar Spotlights: Usage Guide and Tips](#)

Comprehensive guide for Quntis outdoor solar spotlights. Learn about optimal charging, installation, operation, and applications for garden, pathway, and landscape lighting. Features 3 lighting modes and automatic dusk-to-dawn operation.