

## Lavinda BH-901

# Lavinda Professional Nail Drill Machine User Manual

Model: BH-901

[Overview](#)

[Setup](#)

[Operation](#)

[Maintenance](#)

[Troubleshooting](#)

[Specifications](#)

[Warranty](#)

## 1. PRODUCT OVERVIEW

---

The Lavinda Professional Nail Drill Machine (Model BH-901) is a cordless, rechargeable electric nail file designed for professional and home use. It features a powerful brushless motor, offering smooth and quiet operation with minimal heat and vibration. This portable device is suitable for various nail care tasks, including natural nail polishing, cuticle cleaning, gel and acrylic nail removal, and shaping.



Figure 1: Lavinda Professional Nail Drill Machine with its components.

## Key Features:

- **Professional Brushless Motor:** Equipped with an updated high-quality bearing brushless motor for smooth operation, lower heat, quiet performance, and minimal vibration. Designed for over 15,000 hours of use with 0.015mm coaxiality max.
- **Dual Charging Options:** Features a 2-in-1 desktop and portable wireless design. Charge via Type-C connection or the wireless charging base for ultimate flexibility.
- **Long-lasting Battery:** Built-in rechargeable battery provides up to 10 hours of continuous use after a quick 2-hour recharge. LCD display shows battery status.
- **Versatile Accessories:** Includes a portable carrying bag and 6 specialized 3/32" bits made of durable ceramic and carbide, suitable for various nail artwork.

## 2. SETUP

### 2.1 Unboxing and Initial Inspection

Carefully remove all components from the packaging. Inspect the main unit, handpiece, charging base, and

accessories for any signs of damage. Ensure all listed items are present.

## 2.2 Charging the Device

Before first use, fully charge the nail drill machine. The device offers two charging methods:

- **Type-C Connection:** Connect the provided Type-C cable to the port on the bottom of the main unit and to a suitable USB power adapter (not included).
- **Wireless Charging Base:** Place the main unit onto the wireless charging base. Ensure the base is connected to a power source.

The LCD display will indicate the battery status. A full charge typically takes 2 hours and provides up to 10 hours of runtime.

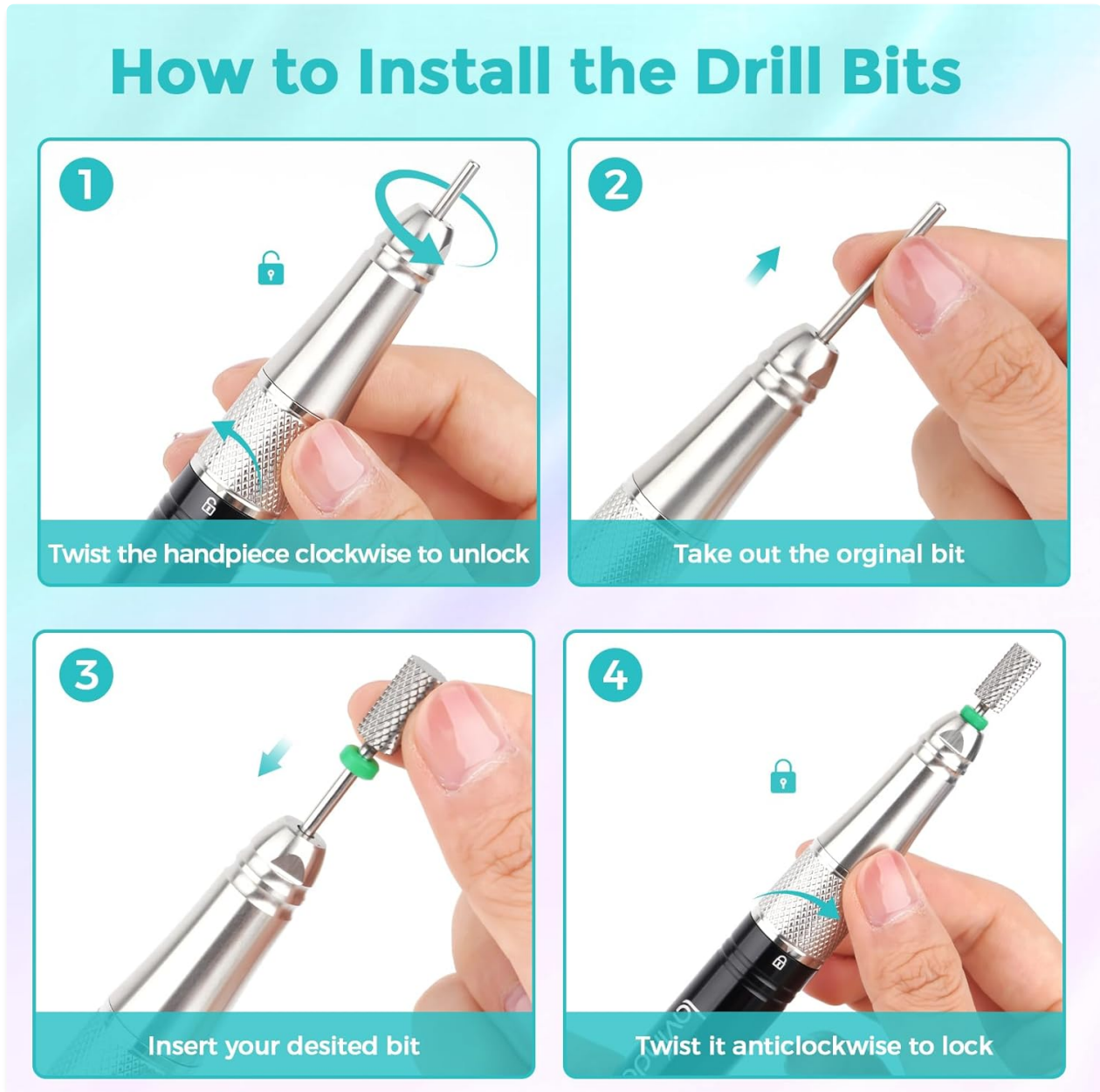


Figure 2: Charging the Lavinda Nail Drill Machine.

## 2.3 Installing Drill Bits

The handpiece features a twist-lock mechanism for secure bit installation.

1. Twist the handpiece clockwise to unlock the chuck.

2. Remove any existing bit or the original bit if it's the first time.
3. Insert your desired 3/32" drill bit fully into the chuck.
4. Twist the handpiece anti-clockwise to lock the bit securely in place.

**Attention: Always turn off the machine when replacing drill bits. Forcing the grinding head while the drill is working will damage the rubber shaft inside the handpiece and prevent it from working.**

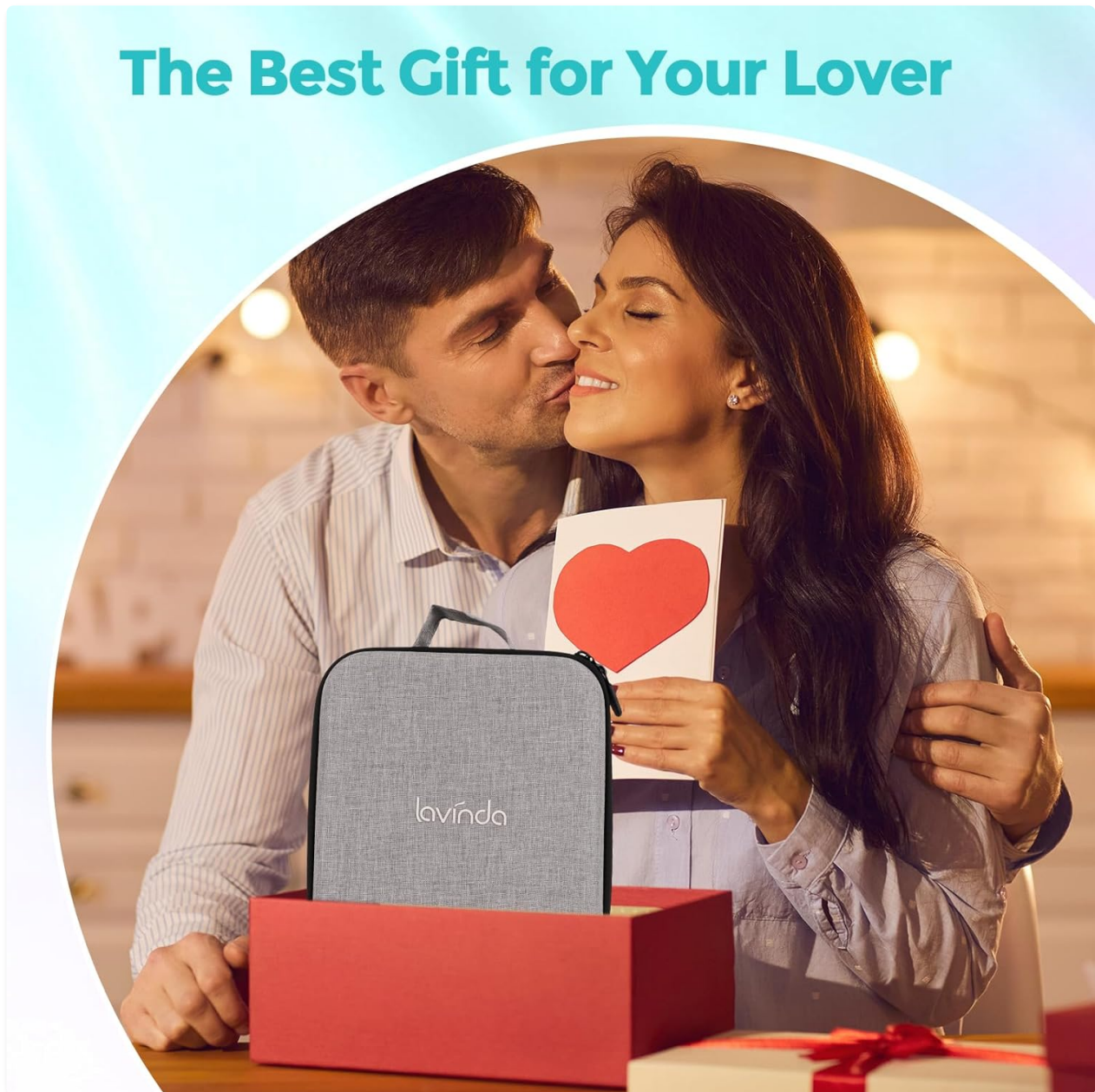


Figure 3: Drill bit installation steps.

### 3. OPERATING INSTRUCTIONS

#### 3.1 Powering On/Off and Speed Adjustment

1. Connect the handpiece to the main unit via the designated port.
2. Turn the speed control knob (located at the top of the main unit) clockwise to power on the device and increase the RPM. The TFT display will show the current speed (0-35,000 RPM).
3. Turn the knob counter-clockwise to decrease the speed and power off the device.

## 2 Charging Modes



Large battery capacity(2600mA)



Quick 2 hours full charge



Work up to 10 hours

Figure 4: Control panel and components of the nail drill.

### 3.2 Forward/Reverse Rotation

The main unit features a switch to change the rotation direction of the drill bit (Forward/Reverse). This allows for comfortable use by both left-handed and right-handed individuals, and for working on different areas of the nail.

### 3.3 Using the Drill Bits

The included 6 specialized drill bits are designed for various applications:

- **Cone Head:** For cuticle work and polishing nail side edges.
- **Fire Arrow:** For removing nail polish.
- **Ball Bit:** For removing cuticles.
- **Large Barrel Top:** For easy surface machining.
- **Brush Bit:** For cleaning nail dust.
- **Mandrel Bit + Sanding Bands:** For polishing thick nails and removing calluses.

Select the appropriate bit for your task and adjust the RPM accordingly. Start with a lower speed and gradually

increase as needed for control and safety.

Your browser does not support the video tag.

Video 1: Official product video demonstrating the features and usage of the Lavinda Professional Rechargeable Nail Drill Machine.

## 4. MAINTENANCE

---

### 4.1 Cleaning

- After each use, remove the drill bit and clean it with a brush or disinfectant solution.
- Wipe the handpiece and main unit with a soft, dry cloth. Do not use harsh chemicals or abrasive cleaners.
- Ensure no dust or debris accumulates in the chuck mechanism of the handpiece.

### 4.2 Storage

Store the nail drill machine and its accessories in the provided portable carrying bag in a cool, dry place, away from direct sunlight and moisture.

## 5. TROUBLESHOOTING

---

- **Device not turning on:** Ensure the device is fully charged. Check the power connection if charging via Type-C.
- **Drill bit not spinning or loose:** Ensure the drill bit is correctly installed and securely locked in the handpiece. The machine must be turned off before installing or removing bits.
- **Excessive vibration or noise:** Check if the drill bit is bent or damaged. Replace with a new bit if necessary. Ensure the bit is inserted correctly and locked.
- **Reduced performance:** The battery might be low. Recharge the device. Ensure the correct bit is used for the task.

If you encounter persistent issues not covered here, please refer to the warranty and support section for assistance.

## 6. SPECIFICATIONS

---

Feature	Detail
Brand	Lavinda
Model Name	Lavinda Professional Nail Drill Machine (BH-901)
Power Source	Battery Powered
Maximum RPM	35,000 RPM
Battery Life	Up to 10 hours continuous use
Recharge Time	Approx. 2 hours
Charging Type	Type-C, Wireless Charging Base

Material	Metal
Product Dimensions	2.76"L x 0.79"W x 6.3"H
Weight	2.98 Pounds

## 7. WARRANTY AND SUPPORT

---

The Lavinda Professional Nail Drill Machine is certified with CE/UL/FCC/MSDS for safety and durability, ensuring reliable performance.

For any after-sales issues or technical support, please contact our dedicated support team. We are ready to assist you within 24 hours on working days.

Contact information can be found on the official Lavinda website or through your purchase platform.