

ELISWEEN B18

ELISWEEN Wireless Switch Controller Instruction Manual

Model: B18

1. INTRODUCTION

This manual provides detailed instructions for the ELISWEEN Wireless Switch Controller, Model B18. This controller is designed for use with Nintendo Switch, Switch Lite, Switch OLED, iOS (version 13.0 and above), Android, and PC (wired connection for Windows 7 and above, supporting X-Input and Steam games).



Image 1.1: Front view of the ELISWEEN Wireless Switch Controller in red and blue.

2. PACKAGE CONTENTS

- 1 x ELISWEEN Wireless Switch Controller (Model B18)
- 1 x USB-C Charging Cable
- 1 x User Manual

3. CONTROLLER LAYOUT AND FEATURES

The controller features an ergonomic design with various buttons and functions for enhanced gameplay across multiple platforms.



Image 3.1: Close-up view highlighting 360° 3D Joysticks, Responsive Triggers, Precise D-Pad, and One-Click Screenshot button.

- **Left Joystick:** For directional control.
- **Right Joystick:** For camera or additional directional control.
- **D-Pad:** Directional pad for precise input.
- **A/B/X/Y Buttons:** Standard action buttons.
- **L/R Buttons:** Shoulder buttons.
- **ZL/ZR Buttons:** Trigger buttons.
- **HOME Button:** Powers on the controller, wakes up the console, and returns to the home screen.
- **Screenshot Button:** Captures screenshots.
- **TURBO Button:** Activates/deactivates turbo function.
- **+/- Buttons:** System menu buttons.
- **M1/M2 Buttons:** Programmable back buttons.
- **USB-C Port:** For charging and wired connection.
- **Indicator Lights:** Display connection status and battery level.

4. SETUP AND CONNECTION

4.1. Charging the Controller

Before first use, fully charge the controller. Connect the supplied USB-C cable to the controller's USB-C port and the other end to a USB power source (e.g., console, PC, or USB wall adapter). The indicator lights will show charging status and turn off when fully charged.

- **Charging Time:** Approximately 3 hours.
- **Play Time:** Up to 15 hours on a full charge.



Image 4.1: Illustration of the controller's 1000mAh battery, charging time, and play time.

4.2. Connecting to Nintendo Switch/Lite/OLED (Wireless)

1. On your Switch console, go to **System Settings > Controllers and Sensors > Disconnect Controllers** to clear previous connections.
2. Then, go to **Controllers and Sensors > Change Grip/Order**.
3. On the ELISWEEN controller, press and hold the **Y + HOME** buttons simultaneously for 3-5 seconds until the indicator lights flash rapidly.
4. Once connected, the indicator light(s) will remain solid.

4.3. Connecting to iOS (Wireless)

Requires iOS 13.0 or above.

1. On the ELISWEEN controller, press and hold the **B + HOME** buttons simultaneously for 3-5 seconds until the indicator lights flash rapidly.
2. On your iOS device, go to **Settings > Bluetooth** and select the controller from the list of available devices.
3. Once connected, the indicator light(s) will remain solid.

4.4. Connecting to Android (Wireless)

1. On the ELISWEEN controller, press and hold the **A + HOME** buttons simultaneously for 3-5 seconds until the indicator lights flash rapidly.
2. On your Android device, go to **Settings > Bluetooth** and select the controller from the list of available devices.
3. Once connected, the indicator light(s) will remain solid.

4.5. Connecting to PC (Wired)

Requires Windows 7 or above. Supports X-Input and Steam games.

1. Connect the USB-C cable to the controller's USB-C port.
2. Connect the other end of the USB-C cable to an available USB port on your PC.
3. The PC should automatically detect and install the necessary drivers. The controller will be ready for use.



Image 4.2: Visual guide for connecting the controller to Switch, iOS, Android, and PC.

5. OPERATING INSTRUCTIONS

5.1. One-Button Wake-Up Function (for Switch)

After the initial connection to your Switch console (using Y + HOME), you can wake up your Switch console by simply pressing the **HOME** button on the controller for 3 seconds.



Image 5.1: Demonstrates pressing the HOME button to wake up a connected Switch console.

5.2. Programmable Back Buttons (M1/M2)

The controller features two programmable back buttons, M1 and M2, which can be assigned single or multiple button functions to optimize gameplay.



Image 5.2: Illustration of assigning A+B+X+Y+L+ZL+R+ZR+D-pad functions to M1/M2.

Programming Steps:

1. Press and hold the **M1** or **M2** button you wish to program.
2. While holding M1/M2, press the button(s) you want to assign (e.g., A, B, X, Y, L, ZL, R, ZR, D-pad directions).
3. Release the M1/M2 button. The function is now assigned.

To clear a programmed function, repeat the steps without pressing any other buttons after holding M1/M2.

5.3. TURBO Function

The TURBO function allows for rapid, continuous input of a button press. It has 3 adjustable speeds: 5 shots/second, 12 shots/second, and 20 shots/second.



Image 5.3: Visual representation of the TURBO button and its speed settings.

Activating TURBO:

1. Press and hold the **TURBO** button.
2. While holding TURBO, press the desired action button (A/B/X/Y/L/ZL/R/ZR) once to activate TURBO for that button.

Adjusting TURBO Speed:

1. Press and hold the **TURBO** button.
2. While holding TURBO, press the **Right Joystick Up** or **Down** to cycle through the three speed settings.

Deactivating TURBO:

1. Press and hold the **TURBO** button.
2. While holding TURBO, press the action button (A/B/X/Y/L/ZL/R/ZR) that has TURBO activated, twice.

5.4. Vibration Function

The controller features dual vibration motors with 3 adjustable levels: weak, medium, and strong. This provides tactile feedback during gameplay.

3-LEVEL VIBRATION

Dual motors provide 3 adjustable vibrations
can get physical feedback



6-AXIS GYRO SENSOR

With built-in sensor to control
precisely direction and view



Image 5.4: Depicts the dual vibration motors and the 6-axis gyro sensor functionality.

Adjusting Vibration Intensity:

1. Press and hold the **TURBO** button.
2. While holding TURBO, press the **Left Joystick Up** or **Down** to cycle through the vibration levels (Weak, Medium, Strong, Off).

5.5. Gyro Sensor

The built-in 6-axis gyro sensor allows for precise motion control in compatible games, primarily on Nintendo Switch devices. This feature enables intuitive control based on the controller's inclination.

6. MAINTENANCE

6.1. Battery Care

- Avoid fully discharging the battery frequently.
- Charge the controller regularly, even if not in use for extended periods, to maintain battery health.
- Do not expose the controller to extreme temperatures.

6.2. Cleaning

- Use a soft, dry cloth to clean the controller's surface.

- For stubborn dirt, slightly dampen the cloth with water; avoid excessive moisture.
- Do not use harsh chemicals or abrasive cleaners.

7. TROUBLESHOOTING

- **Controller not connecting:** Ensure the controller is charged. Follow the specific connection steps for your device carefully. Try disconnecting all other controllers from your device's settings before attempting to connect the ELISWEEN controller.
- **Input lag or disconnection:** Ensure there are no strong wireless interferences nearby. Move closer to the console/device.
- **Buttons not responding:** Check if the controller is properly connected. If wired to PC, ensure the cable is securely connected and drivers are installed.
- **Controller not charging:** Verify the USB-C cable is not damaged and the power source is functional. Try a different cable or power adapter.
- **Controller unresponsive (frozen):** Locate the small reset hole on the back of the controller (often near the M1/M2 buttons). Use a thin pin or paperclip to press the reset button inside. This will restart the controller.

8. SPECIFICATIONS

| Feature | Detail |
|----------------------|---|
| Model Number | B18 |
| Connectivity | Wireless (Bluetooth), Wired (USB-C) |
| Compatibility | Nintendo Switch/Lite/OLED, iOS (13.0+), Android, PC (Windows 7+, X-Input/Steam) |
| Battery Capacity | 1000 mAh |
| Charging Time | Approx. 3 hours |
| Play Time | Approx. 15 hours |
| Vibration | Dual motors, 3 adjustable levels |
| Motion Control | 6-axis Gyro Sensor (Switch only) |
| Programmable Buttons | M1, M2 (back buttons) |
| TURBO Function | 3 adjustable speeds (5/12/20 shots/sec) |
| Weight | 11.7 ounces (approx. 331g) |
| Dimensions | 6.5 x 4.65 x 2.52 inches (approx. 16.5 x 11.8 x 6.4 cm) |





9. WARRANTY AND SUPPORT

ELISWEEN products are designed for durability and performance. For any technical issues, questions, or support needs regarding your ELISWEEN Wireless Switch Controller, please contact the seller or

manufacturer directly. Refer to your purchase documentation for specific warranty terms and contact information.

© 2025 ELISWEEN. All rights reserved.

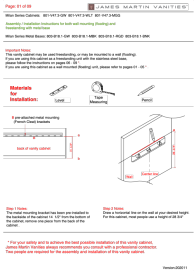
Related Documents - B18

| | |
|---|--|
|  | <p>ELISWEEN X107 Bluetooth Pro Controller for Nintendo Switch: User Manual & Guide</p> <p>Comprehensive user manual for the ELISWEEN X107 Bluetooth Pro Controller for Nintendo Switch. Learn about product features, connection methods, function descriptions, charging, calibration procedures, and FCC compliance. Includes detailed instructions for pairing and setup.</p> |
|  | <p>B18 Wireless Keyboard User Manual - Setup, Pairing, and Features</p> <p>Comprehensive user manual for the B18 wireless keyboard. This guide details setup procedures, dual connectivity options (Bluetooth and 2.4GHz), keyboard backlighting controls, and troubleshooting tips for optimal performance.</p> |
|  | <p>ELISWEEN X107 Bluetooth Pro Controller for Nintendo Switch: User Manual & Guide</p> <p>Comprehensive user manual for the ELISWEEN X107 Bluetooth Pro Controller for Nintendo Switch. Learn about product features, connection methods, function descriptions, charging, calibration procedures, and FCC compliance. Includes detailed instructions for pairing and setup.</p> |
|  | <p>COSTWAY SP37319US 200W Vibration Plates User Manual and Safety Guide</p> <p>Comprehensive user manual for the COSTWAY SP37319US 200W Vibration Plates. Includes safety precautions, operating instructions, product benefits, troubleshooting, and specifications.</p> |



[NIIMBOT B18 Label Printer Quick-Reference Guide](#)

A guide to quickly install, download the app, and connect the NIIMBOT B18 label printer via Bluetooth. Includes basic usage, product parameters, and important warnings.



[James Martin Vanities Milan Series Assembly and Installation Guide](#)

Comprehensive assembly and installation instructions for James Martin Vanities Milan Series cabinets, covering both wall-mounting (floating) and freestanding configurations with metal bases. Includes materials needed, step-by-step guidance, and important safety notes.