

Manuals+

[Q & A](#) | [Deep Search](#) | [Upload](#)

Manuals.plus /

› [SINKVINE](#) /

› SINKVINE 25-inch Undermount Stainless Steel Kitchen Sink (Model SVU251809RS0) - Instruction Manual

SINKVINE SVU251809RS0

SINKVINE 25-inch Undermount Stainless Steel Kitchen Sink

Model: SVU251809RS0 | Brand: SINKVINE

INTRODUCTION

Thank you for choosing the SINKVINE 25-inch Undermount Stainless Steel Kitchen Sink. This manual provides essential information for the proper installation, operation, maintenance, and troubleshooting of your new sink. Please read these instructions carefully before installation and retain them for future reference.

PRODUCT OVERVIEW

The SINKVINE 25-inch Undermount Kitchen Sink is crafted from high-quality T-304 grade stainless steel, designed for durability and ease of use in various settings, including kitchens, laundry rooms, and outdoor entertainment areas. It features a commercial-grade brushed finish and sound-absorbing technology for a quiet experience.

Key Features:

- **Material:** T-304 grade stainless steel (18/10 Chromium/Nickel) for scratch resistance and durability.
- **Thickness:** 3mm thickened top flange, thicker than most standard sinks.
- **Finish:** Commercial-grade brushed finish for easy cleaning and resistance to water spots.
- **Corners:** Gently R10 rounded corners for simplified cleaning.
- **Sound Dampening:** 3mm heavy-duty sound-absorbing pads and full insulation with undercoating to minimize noise and condensation.
- **Drainage:** X-shape sloped bottom with drain grooves for fast water drainage.
- **Versatility:** Suitable for kitchen, laundry, or outdoor use.

Included Components:

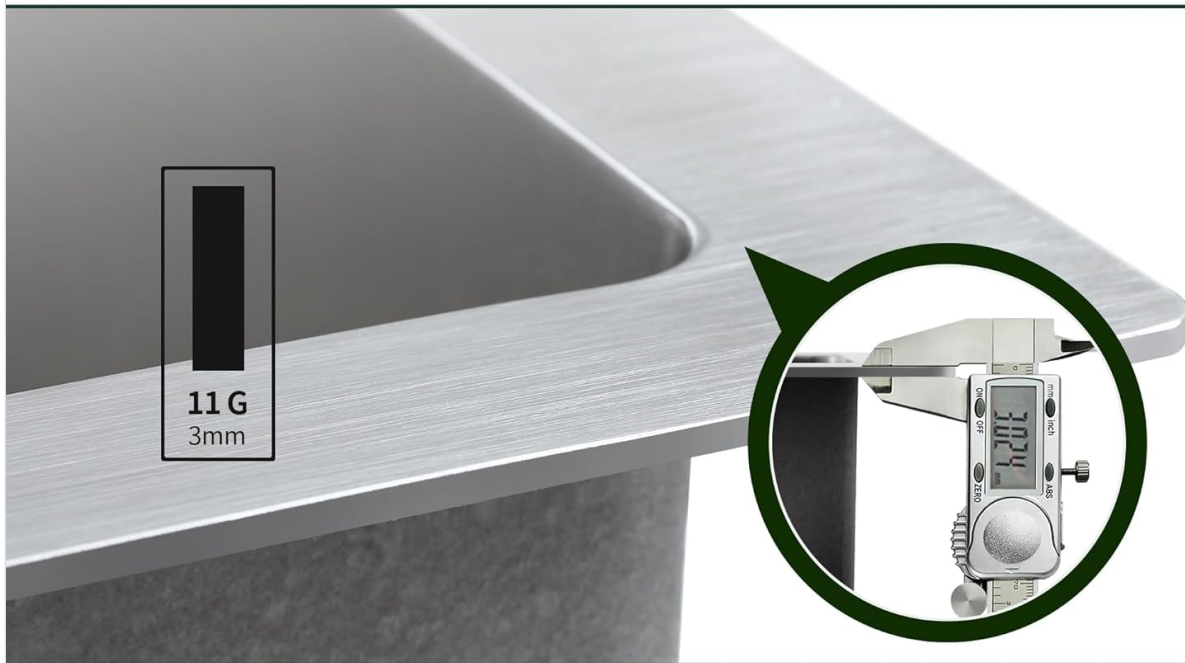
- Stainless Steel Basket Strainer Drain Assembly (3.5-inch standard)
- Bottom Rinse Grid with soft bumpers

- Roll-up Drying Rack
- Installation Guide
- Cut-out Template
- Mounting Clips



Image: SINKVINE 25-inch Undermount Stainless Steel Kitchen Sink with included accessories.

SINKVINE Robust and Resilient



T304 Stainless Steel

This stainless steel sink is made with heavy-duty dent-resistant T-304 stainless steel for lifelong durability. 18% Chromium 10% Nickel Composition

3MM Thicken Panel

It's constructed from premium 3mm thick panel grade T-304 stainless steel for durability and strength (3mm equal to 11 Gauge). The sink body is with TRU18 thick real 18-gauge steel - virtually indestructible, and will never chip or crack.

Commercial Grade Brushed Finish

Opt for a brushed finish. This is a popular choice for high-end stainless steel sinks because this light texture creates a matte finish that hides small scratches. A brushed finish is also less likely to make water spots noticeable.

Image: Detailed view of the T-304 stainless steel and 3mm thickened panel.

SINKVINE

NoiseDefend technology

Can you hear that? Probably not.

Our stainless steel sinks feature multiple 3mm thick rubber sound-dampening pads. They are insulating to help your kitchen sink stay quiet and reduce noise-producing vibrations. SINKVINE sinks are also sprayed with a coating to reduce condensation.

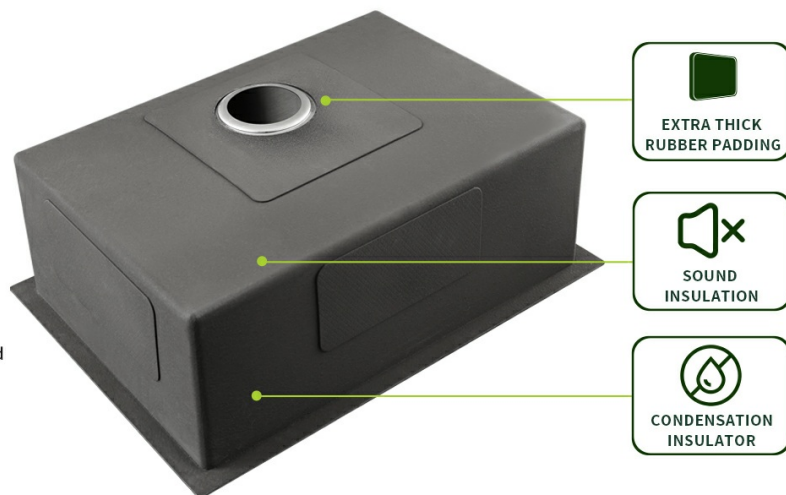


Image: Illustration of NoiseDefend technology with sound-dampening pads and insulation.

SETUP AND INSTALLATION

This sink is designed for undermount installation, creating a seamless look with your countertop. A minimum base cabinet width of 28 inches is required for proper fitment. Always refer to the included cut-out template

and installation guide for precise measurements and steps.

Installation Steps:

1. **Prepare Cabinet:** Ensure your base cabinet is at least 28 inches wide.
2. **Countertop Cut-out:** Use the provided cut-out template to mark and cut the opening in your countertop.
3. **Apply Sealant:** Apply a bead of silicone sealant around the rim of the sink opening on the underside of the countertop.
4. **Position Sink:** Carefully lift and position the sink into the opening, pressing firmly against the sealant.
5. **Secure with Clips:** Attach the mounting clips to the underside of the countertop and tighten them to secure the sink in place.
6. **Install Drain Assembly:** Install the 3.5-inch basket strainer drain assembly according to its specific instructions.
7. **Connect Plumbing:** Connect the sink to your plumbing system, ensuring all connections are watertight.



Image: Visual guide for undermount sink installation, including cut-out and cabinet size.



Image: Detailed dimensions of the sink and required minimum base cabinet size.

Video: Official SINKVINE Kitchen Sink Undermount Series overview, demonstrating features and potential installation scenarios.

OPERATION

Your SINKVINE kitchen sink is designed for daily use, offering a deep single bowl for various tasks. The included accessories enhance functionality:

- **Bottom Rinse Grid:** Place the grid at the bottom of the sink to protect the surface from scratches and keep dishes elevated for better drainage.
- **Roll-up Drying Rack:** This versatile rack can be placed over the sink for air-drying dishes, fruits, or vegetables, maximizing your counter space. It can be rolled up for compact storage when not in use.
- **Basket Strainer:** The drain assembly includes a removable basket strainer to catch food debris and prevent clogs in your plumbing.

INCLUDED



STAINLESS STEEL DRAIN ASSEMBLY

Constructed from premium stainless steel, a 3.5-inch US standard drain assembly with an easy-to-clean removable basket strainer helps keep food and debris from clogging the drainpipe

PROTECTIVE BOTTOM GRID

A stainless steel bottom grid with soft bumpers promotes better draining and helps protect the floor from getting scratched and dented. Keeping dishes, utensils, and heavy cookware elevated



INCLUDED

INCLUDED



DURABLE ROLL-UP DRYING RACK

Constructed of square stainless steel bars and non-slip silicone coating perfect for drying dishes right over the sink. Holds up to 50 lbs.. dishwasher-safe. heat-safe rolls up for storage

Image: The SINKVINE sink showcasing the bottom grid, basket strainer, and roll-up drying rack in practical use.

MAINTENANCE

Proper care will ensure the longevity and appearance of your SINKVINE stainless steel sink.

Cleaning Instructions:

- Use an ordinary mild detergent to wash the sink surface.
- Rinse thoroughly with clean water.
- Dry the sink with a soft cloth to prevent water spots and maintain the brushed finish.
- Avoid abrasive cleaners, steel wool, or harsh chemicals, as these can damage the stainless steel finish.
- Regularly clean the basket strainer to prevent debris buildup.

Image: Demonstration of cleaning the commercial-grade brushed finish, highlighting its easy-to-clean properties.

TROUBLESHOOTING

If you encounter any issues with your SINKVINE sink, please refer to the following common solutions:

- **Slow Drainage:** Check the basket strainer for debris. If clear, inspect the plumbing for clogs.
- **Water Spots:** Ensure the sink is dried with a soft cloth after each use, especially in hard water areas.
- **Scratches:** While the sink is scratch-resistant, minor scratches can occur. Use the bottom rinse grid to minimize direct contact with heavy items. For deeper scratches, consult a professional for stainless steel repair.
- **Leaks:** Check all plumbing connections and the drain assembly for proper sealing. Tighten any loose connections or reapply plumber's putty/sealant if necessary.

For persistent issues, please contact SINKVINE customer support.

SPECIFICATIONS

Feature	Detail
Brand	SINKVINE
Model Number	SVU251809RS0
Color	Brushed
Material	Stainless Steel (T-304 grade, 18/10 Chromium/Nickel)
Exterior Dimensions (W x D x H)	25" x 18" x 9"
Interior Dimensions (Cutout Size)	23" (wide) x 16" (front-to-back) x 9" (bowl depth)
Minimum Base Cabinet	28" wide
Drain Opening	Standard 3.5"
Installation Type	Undermount
Item Weight	10.03 Kilograms
Included Components	Metal Sink Strainer, Bottom Rinse Grid, Roll-up Drying Rack

WARRANTY & SUPPORT

The SINKVINE 25-inch Undermount Stainless Steel Kitchen Sink comes with a **Lifetime Limited Warranty**.

This warranty covers defects in material and workmanship under normal use and service.

For warranty claims, technical assistance, or any questions regarding your product, please contact SINKVINE customer support through the retailer where the product was purchased or directly via the official SINKVINE website.

Please retain your proof of purchase for warranty validation.

