

Manuals+

[Q & A](#) | [Deep Search](#) | [Upload](#)

[manuals.plus](#) /

> [SINKVINE](#) /

> [SINKVINE 14x18 Inch Gunmetal Black Undermount Wet Bar Sink User Manual](#)

SINKVINE SVU141809RB0

SINKVINE 14x18 Inch Gunmetal Black Undermount Wet Bar Sink User Manual

Model: SVU141809RB0 | Brand: SINKVINE

1. INTRODUCTION

Thank you for choosing the SINKVINE 14x18 Inch Gunmetal Black Undermount Wet Bar Sink. This manual provides essential information for the proper installation, operation, and maintenance of your new sink. Please read these instructions carefully before installation and retain them for future reference.

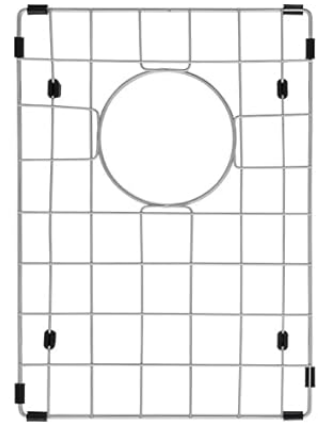
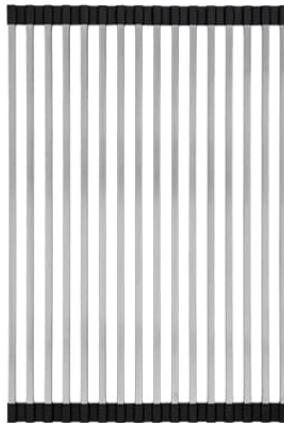


Image 1: SINKVINE 14x18 Inch Gunmetal Black Undermount Wet Bar Sink with included drain strainer, bottom grid, and roll-up drying rack.

2. PRODUCT FEATURES

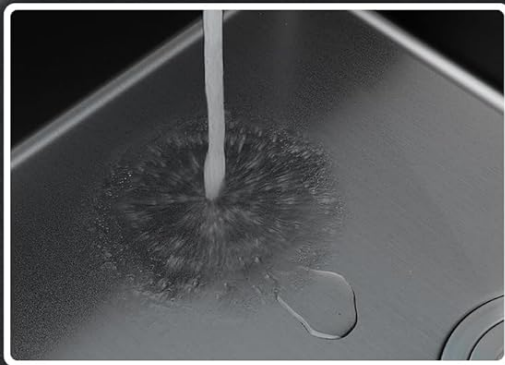
- **Advanced PVD Nano Coating:** The sink features Physical Vapor Deposition (PVD) and Nano technology, providing superior rust, water, and oil resistance. This protective coating enhances hardness, prevents scratches, and simplifies cleaning.
- **High-Quality T-304 Stainless Steel:** Constructed from premium T-304 grade stainless steel with a PVD nano finish, ensuring durability and resistance to daily wear and scratches. The 3mm thickened top flange offers

enhanced strength.

- **Effective Soundproofing:** Equipped with 3mm heavy-duty sound-absorbing pads to minimize noise and reduce condensation, ensuring a quieter kitchen environment.
- **Efficient Drainage Design:** Features an X-shape sloped bottom with drain grooves for rapid water drainage, preventing water pooling.
- **Easy-to-Clean Corners:** R10 radius inside corners are designed for contemporary aesthetics and effortless cleaning.
- **Versatile Undermount Installation:** Creates a seamless integration with your countertop, maximizing counter space and providing a clean, streamlined appearance. Suitable for use as a wet bar sink, kitchen prep basin, or outdoor sink.

SPECIAL NANO PVD COATING

The Coating has a self-cleaning effect, makes the sink easy to clean, and is truly scratch-resistant



No residual oil scale



Non-absorption of moisture

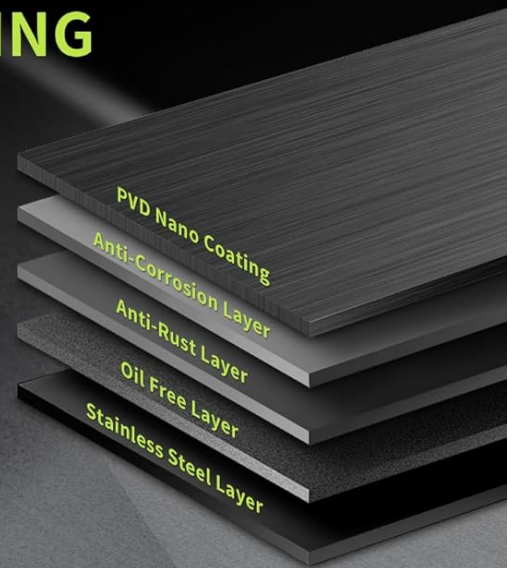


Image 2: Illustration of the PVD Nano Coating technology, highlighting its multi-layered structure and self-cleaning properties.

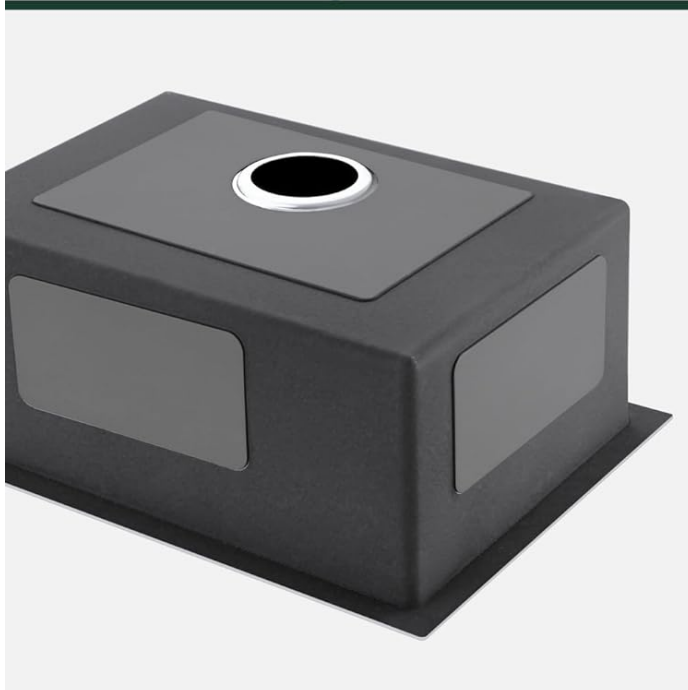
DESIGNED FOR EASY DRAINING

X-shaped drainage grooves and gently slope sink bottom help direct water into the drain. The engineered slope on the bottom of the sink helps prevent pools of water and keeps delicate glassware from tipping over.



EASY-TO-CLEAN CORNER

R10(10mm) tight corner designed for a contemporary look and easy cleaning.



SOUNDPROOFING TECHNOLOGY



EXTRA THICK RUBBER PAD
3mm extra-thick pads cover all sides to absorb noise and vibration



SOUND DAMPENING SYSTEM
2.5x superior sound dampening system keeps your kitchen ultra quiet



FULLY INSULATED W/ UNDERCOATING
Prevents condensation and creates a moisture barrier that protects the sink and base cabinet

Image 3: Visual representation of the sink's efficient draining system, easy-to-clean R10 corners, and soundproofing features.

3. PACKAGE CONTENTS

Your SINKVINE wet bar sink package includes the following items:

- SINKVINE 14x18 Inch Undermount Sink
- Basket Strainer Drain Assembly (Standard 3.5" size)
- Bottom Rinse Grid
- Roll-up Drying Rack
- Installation Guide
- Cut-out Template
- Mounting Clips
- Lifetime Limited Warranty Information

INCLUDED



STAINLESS STEEL DRAIN ASSEMBLY

Constructed from premium stainless steel, a 3.5-inch US standard drain assembly with an easy-to-clean removable basket strainer helps keep food and debris from clogging the drainpipe

PROTECTIVE BOTTOM GRID

A stainless steel bottom grid with soft bumpers promotes better draining and helps protect the floor from getting scratched and dented. Keeping dishes, utensils, and heavy cookware elevated



INCLUDED

INCLUDED



DURABLE ROLL-UP DRYING RACK

Constructed of square stainless steel bars and non-slip silicone coating perfect for drying dishes right over the sink. Holds up to 50 lbs.. dishwasher-safe. heat-safe rolls up for storage

Image 4: The complete set of accessories provided with your SINKVINE sink, including the drain assembly, protective bottom grid, and versatile roll-up drying rack.

4. SPECIFICATIONS

Attribute	Detail
Brand	SINKVINE
Model Number	SVU141809RB0
Color	Gunmetal Black
Material	Nano PVD Stainless Steel (T-304 Grade)
Exterior Dimensions	14" (wide) x 18" (front-to-back) x 9" (height)

Interior Dimensions (Cutout Size)	12" (wide) x 16" (front-to-back) x 9" (bowl depth)
Minimum Base Cabinet Size	17" wide
Installation Type	Undermount
Drain Type	Lift and Turn (Standard 3.5" opening)
Item Weight	15.87 pounds (7.21 Kilograms)
Hole Count	1

SINK DIMENSIONS

SVU141809RS0

EXTERNAL DIMENSIONS

(W)14" X (L) 18" X (D)9"

INTERNAL DIMENSIONS (CUTOUT SIZE)

(W)12" X (L) 16" X (D)9"

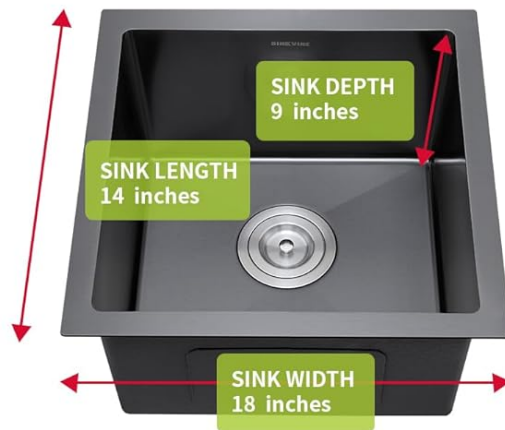
MIN CABINET SIZE: 17"

9" DEEP BOWL

The deep single bowl design offers enough room to wash your largest items while containing mess and splatter inside the sink.

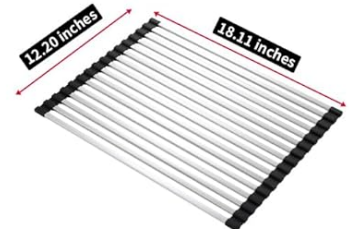
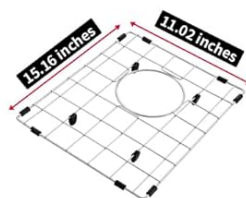


DEEP BOWL



STAINLESS STEEL BOTTOM GRID

ROLL-UP DISH DRYING RACK



SINKVINE

Image 5: Detailed dimensions of the SINKVINE sink, including width, length, and bowl depth.

5. INSTALLATION (SETUP)

Proper installation is crucial for the optimal performance and longevity of your SINKVINE sink. It is recommended to have

a professional plumber or experienced installer perform the installation.

5.1 Pre-Installation Checklist

- Verify all package contents are present and undamaged.
- Ensure your base cabinet meets the minimum size requirement (17" wide).
- Have necessary tools ready (e.g., sealant, drill, clamps, safety glasses).
- Review the included Installation Guide and use the provided Cut-out Template.

5.2 Installation Steps (Summary)

1. Carefully place the provided cut-out template on your countertop and trace the opening.
2. Cut the countertop opening according to the template.
3. Apply a bead of silicone sealant around the rim of the sink opening on the underside of the countertop.
4. Position the sink into the opening from below, ensuring proper alignment.
5. Secure the sink using the included mounting clips, tightening them evenly.
6. Install the basket strainer drain assembly into the sink's drain opening.
7. Connect plumbing according to local codes.
8. Allow sealant to cure completely before using the sink.

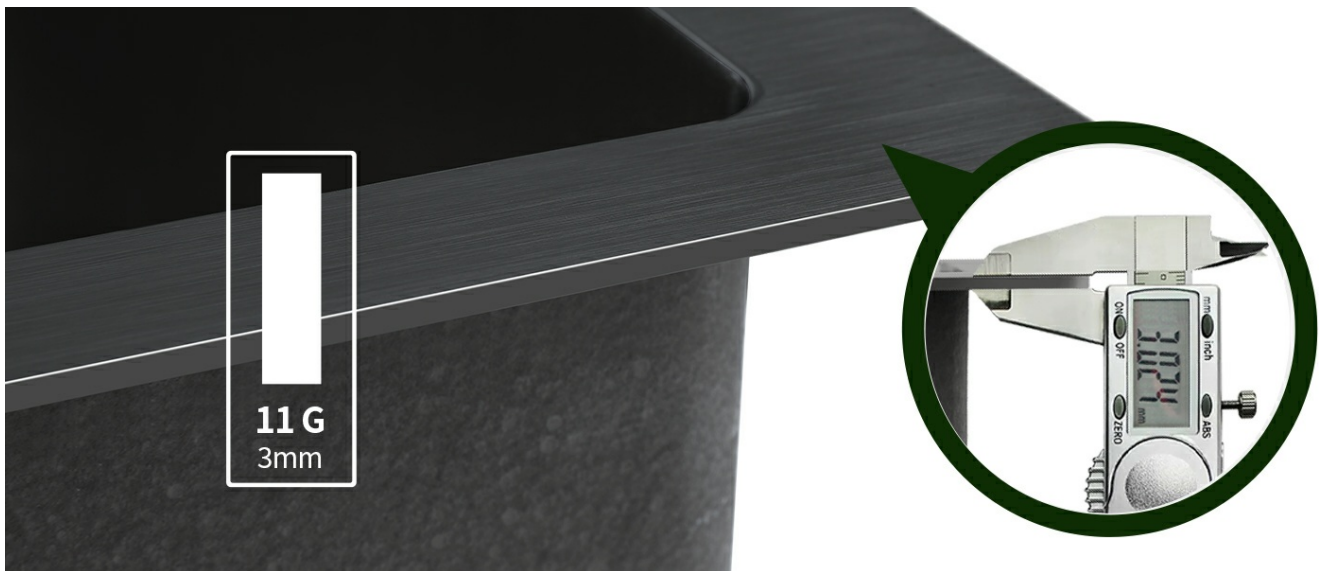


Image 6: Guide on selecting the correct sink size for your cabinet, emphasizing the importance of measuring the cabinet base and using the provided cutting template.

5.3 Installation Video

Your browser does not support the video tag.

Video 1: Official SINKVINE video demonstrating the features and installation process of the PVD Nano Kitchen Sink. This video provides a visual guide to assist with understanding the product and its setup.

6. OPERATION

Your SINKVINE wet bar sink is designed for everyday use in various settings, including kitchens, wet bars, RVs, and outdoor prep areas. Its single bowl design is ideal for washing dishes, preparing food, or chilling beverages.

- **Drain Strainer:** The included basket strainer effectively catches food particles and debris, preventing clogs in your plumbing. Empty it regularly.

- **Bottom Rinse Grid:** Place the bottom grid in the sink to protect its surface from scratches and dents caused by dishes or heavy cookware. It also promotes better drainage.
- **Roll-up Drying Rack:** Utilize the roll-up drying rack over the sink for air-drying dishes, fruits, or vegetables. Its flexible design allows for easy storage when not in use.



Image 7: The SINKVINE sink in use as a wet bar, filled with ice and bottles, showcasing its versatility for entertaining.

7. CARE & MAINTENANCE

To maintain the appearance and performance of your SINKVINE PVD Nano Stainless Steel sink, follow these care instructions:

7.1 Daily Care

- Clean your SINKVINE stainless steel sink before first use.
- Wash and dry your sink after each use to prevent water spots and mineral buildup.

- Always use the bottom grid or rinsing basket to protect the sink's surface.
- Never let soap or other household cleaners dry on the surface of the sink, as this can cause staining.

7.2 Deeper Cleaning

- Clean regularly with ordinary mild detergent and warm water.
- For a more thorough clean, use a stainless steel cleaner once or twice a month to retain its luster.
- Avoid using abrasive cleaners, steel wool, or harsh chemicals.
- Never use bleach solutions on the sink, as it is harmful to stainless steel and can damage the PVD nano coating.

SINKVINE Care & Maintenance



Daily Care

- Clean your SINKVINE stainless steel sink before first use
- Wash and dry your sink after each use
- Use a bottom grid or rinsing basket to protect your sink
- Never let soap or other household cleaners dry on the surface of the sink

Deeper Clean

- Clean regularly with normal detergent and warm water
- Clean the sink once or twice a month using stainless steel cleaner to retain luster
- Never use bleach solutions on the sink, as it is harmful to stainless steel

Image 8: Demonstrating the ease of cleaning the SINKVINE sink, highlighting its non-absorption of moisture and resistance to oil scale.

8. TROUBLESHOOTING

Most issues with your SINKVINE sink can be resolved with simple steps. If you encounter problems, please refer to the following common solutions:

- **Water Spots/Stains:** These are often caused by mineral deposits from hard water. Regularly wipe the sink dry after

each use. For stubborn spots, use a stainless steel cleaner and polish in the direction of the grain.

- **Slow Drainage:** Check the basket strainer for accumulated debris and clean it thoroughly. Ensure plumbing connections are clear and free of obstructions.
- **Scratches:** While the PVD Nano coating is scratch-resistant, heavy impact or abrasive materials can still cause marks. Use the bottom grid to protect the sink from heavy items. Minor scratches may be buffed out with specialized stainless steel scratch removal kits, following product instructions carefully.
- **Noise:** The sink is designed with sound-absorbing pads. If excessive noise occurs, ensure the sink is properly mounted and secured to the countertop.

If problems persist, please contact SINKVINE customer support for assistance.

9. WARRANTY & SUPPORT

Your SINKVINE 14x18 Inch Gunmetal Black Undermount Wet Bar Sink is backed by a **Lifetime Limited Warranty**. This warranty covers manufacturing defects and ensures your satisfaction with the product under normal use and maintenance. For warranty claims, technical support, or any questions regarding your sink, please contact SINKVINE customer service through the retailer where you purchased the product or visit the official SINKVINE website for contact information. Please retain your proof of purchase for warranty validation.