

## Manuals+

[Q & A](#) | [Deep Search](#) | [Upload](#)

Manuals.plus /

› [COMeap](#) /

› COMeap USB 2.0 to USB 3.2 Gen 1 Header Adapter User Manual

## COMeap USB2U32GHA

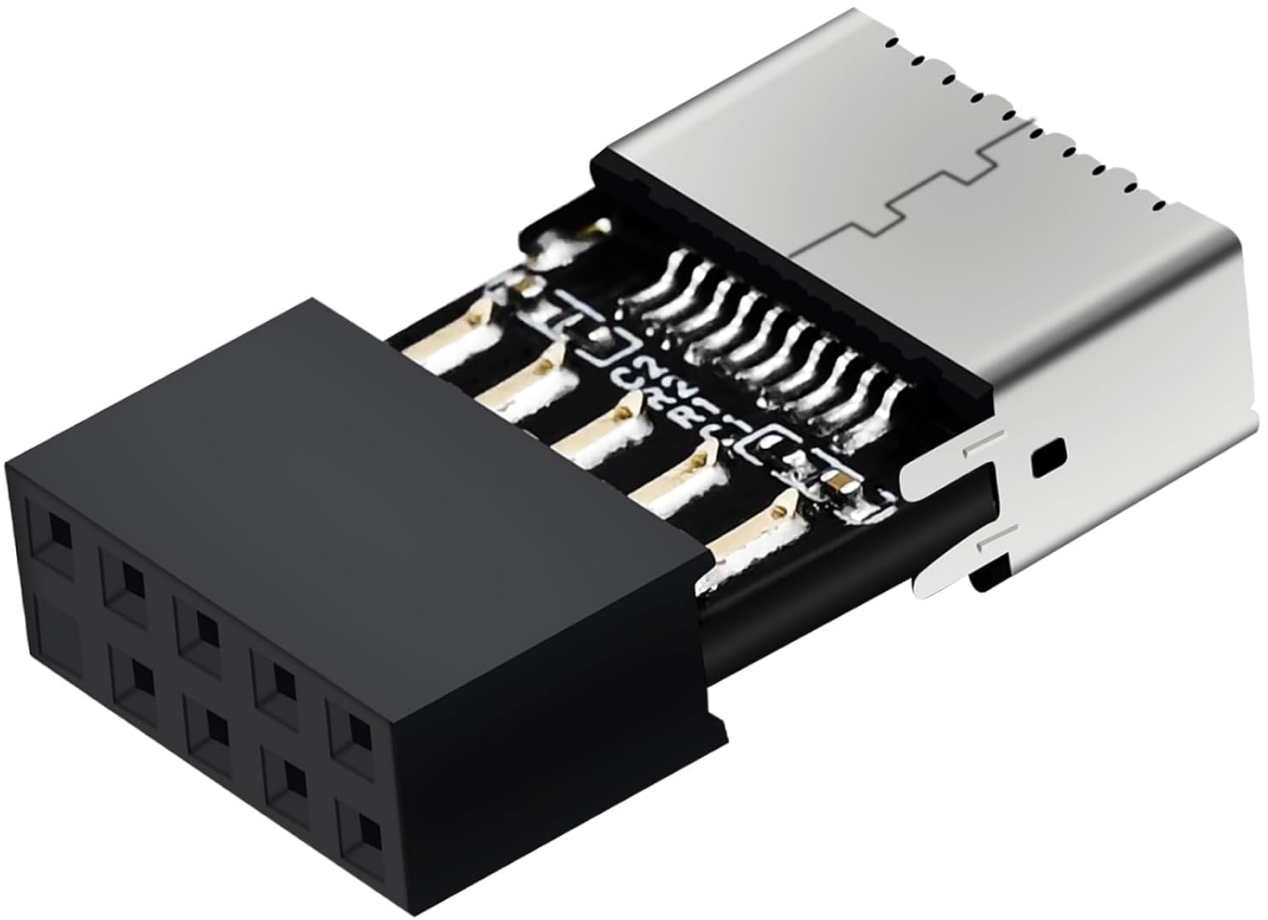
# COMeap USB 2.0 to USB 3.2 Gen 1 Header Adapter User Manual

Model: USB2U32GHA | Brand: COMeap

## 1. INTRODUCTION

---

This manual provides detailed instructions for the installation, operation, and maintenance of your COMeap USB 2.0 to USB 3.2 Gen 1 Header Adapter. This adapter is designed to enable compatibility between older USB 2.0 motherboard headers and newer USB 3.1/3.2 Type-C (20-Pin) A-Key front panel sockets, allowing you to utilize modern USB-C ports on systems with legacy USB 2.0 headers.



**Figure 1:** COMeap USB 2.0 to USB 3.2 Gen 1 Header Adapter. This image shows the compact design of the adapter, featuring a 9-pin USB 2.0 male connector on one end and a Type-E Key-A female socket on the other.

## 2. FEATURES

---

- **USB 2.0 to USB 3.2 Gen 1 Compatibility:** Allows connection of USB 3.1/3.2 Type-C (20-Pin) A-Key front panel headers to a standard USB 2.0 (9-Pin) motherboard header.
- **180-Degree Slim Design:** Engineered to minimize interference with other components on the motherboard or within the chassis, facilitating installation in confined spaces.
- **Plug and Play:** Requires no additional drivers for operation, ensuring straightforward installation and immediate functionality.
- **Data Transfer:** Enables data transfer capabilities for connected USB-C devices, operating at USB 2.0 speeds.
- **High-Quality Construction:** Utilizes high-quality PCB boards and features high temperature resistance for enhanced durability and stability.



**Figure 2:** Key features highlighting the adapter's robust construction, including high-quality PCB boards, high temperature resistance, and an anti-plug design for secure connections.

### 3. PACKAGE CONTENTS

---

Verify that all items are present in the package:

- 1 x COMeap USB 2.0 to USB 3.2 Gen 1 Header Adapter

### 4. SETUP AND INSTALLATION

---

Follow these steps to install the adapter into your computer system:

1. **Prepare your system:** Power off your computer and disconnect it from the power source. Open your computer case to access the motherboard.
2. **Locate the USB 2.0 Header:** Identify an available 9-pin USB 2.0 header on your motherboard. These headers are typically labeled "USB" or "F\_USB" and have 9 pins arranged in two rows, with one pin missing to indicate orientation.
3. **Connect the Front Panel Cable:** Before plugging the adapter into the motherboard, connect your chassis's USB 3.1/3.2 Type-C (20-Pin) A-Key front panel cable to the Type-E female socket on the COMeap adapter. Ensure the connection is firm and correctly oriented.
4. **Install the Adapter:** Carefully align the 9-pin male connector of the COMeap adapter with the 9-pin USB 2.0 header on your motherboard. Gently push down until the adapter is securely seated. The 180-degree slim design helps in tight spaces.

# PLUG And PLAG

Works for type-E connector device to USB 2.0 port

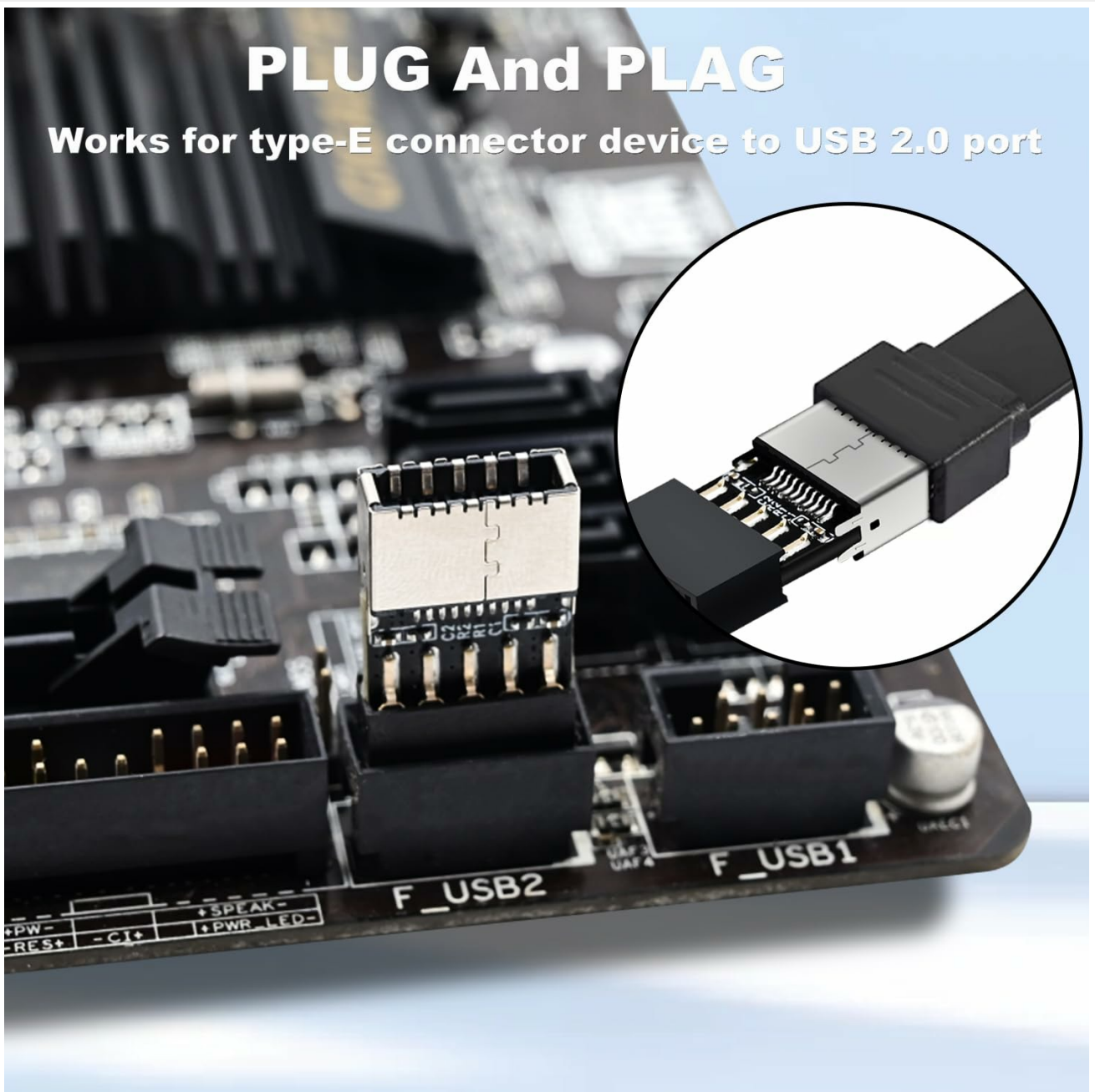
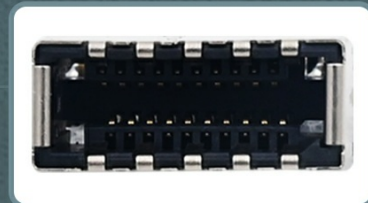
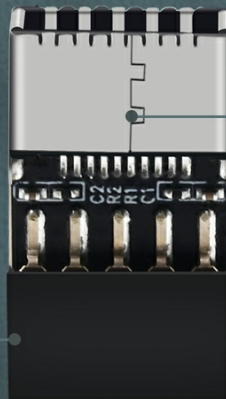
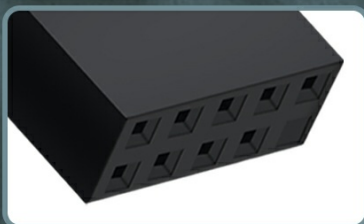


Figure 3: The adapter connected to a USB 2.0 header on a motherboard, with a Type-E cable ready for connection. This illustrates the final installed position.

## USB 2.0 9PIN to TYPE-C FRONT A-KEY INTERFACE

USB 2.0 9PIN



USB 3.2 TYPE-E Interface

Figure 4: Diagram illustrating the connection points: the USB 2.0 9-pin header on the motherboard, the COMeap adapter, and the USB 3.2 Type-E interface from the front panel cable.

Once the adapter is installed and the front panel cable is connected, close your computer case, reconnect the power, and power on your system.

## 5. OPERATION

---

The COMeap USB 2.0 to USB 3.2 Gen 1 Header Adapter operates as a passive conversion device. Once installed, the front panel USB-C port connected via this adapter will function as a USB 2.0 port. You can connect any USB-C compatible device to this port for data transfer and charging, keeping in mind that speeds will be limited to USB 2.0 specifications (up to 480 Mbps).

No specific software or drivers are required for the adapter itself, as it leverages the existing USB 2.0 drivers of your operating system.

## 6. MAINTENANCE

---

The COMeap USB 2.0 to USB 3.2 Gen 1 Header Adapter requires minimal maintenance. To ensure optimal performance and longevity:

- Keep the adapter free from dust and debris. If cleaning is necessary, use a soft, dry cloth. Do not use liquid cleaners.
- Avoid applying excessive force when connecting or disconnecting cables to prevent damage to the connectors or the adapter's internal components.
- Ensure the adapter is securely seated in the motherboard header to prevent intermittent connections.

## 7. TROUBLESHOOTING

---

If you encounter issues with your COMeap USB 2.0 to USB 3.2 Gen 1 Header Adapter, consider the following troubleshooting steps:

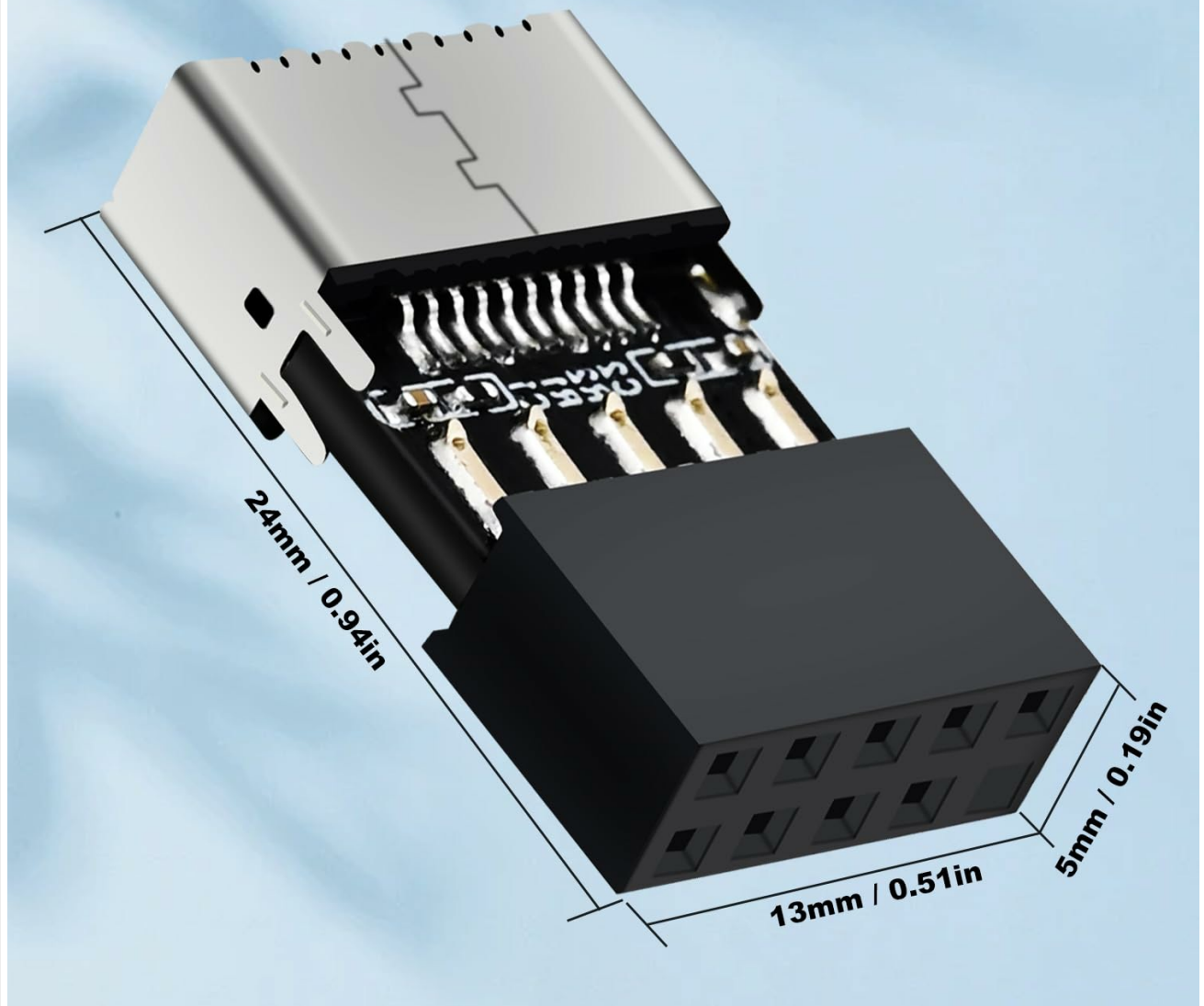
- **USB-C Port Not Functioning:**
  - Ensure the adapter is fully seated in the motherboard's USB 2.0 header.
  - Verify that the front panel USB-C cable is correctly and securely connected to the adapter's Type-E socket.
  - Check your motherboard manual to confirm the correct orientation and pinout of the USB 2.0 header.
  - Test the front panel USB-C port with a different known-good USB-C device.
- **Loose Connection / Adapter Feels Flimsy:**
  - While the adapter is designed to be compact, ensure it is not subjected to undue stress or bending during installation or use.
  - If the adapter feels excessively loose or components appear detached, it may indicate a manufacturing defect. In such cases, contact customer support.
- **Slow Data Transfer Speeds:**
  - This adapter converts a USB 3.x Type-E connection to a USB 2.0 header. Therefore, the maximum data transfer speed will be limited to USB 2.0 specifications (480 Mbps), regardless of the connected USB-C device's capabilities. This is expected behavior and not a malfunction.

## 8. SPECIFICATIONS

---

| Specification                  | Value   |
|--------------------------------|---|
| Product Dimensions (L x W x H) | 0.94 x 0.51 x 0.19 inches (24 x 13 x 5 mm)          |
| Item Weight                    | 0.19 ounces   |
| Model Number                   | USB2U32GHA  |
| ASIN                           | B0CSFR2LXF  |
| Compatible Devices             | Motherboard (with 9-pin USB 2.0 header)             |
| Specific Uses                  | PC internal connectivity                            |
| Connector Type                 | USB Type-C (Female, Key-A) to USB 2.0 (Male, 9-Pin) |
| Color                          | Black   |
| Design                         | 180-degree slim design                              |

# 180-DEGREE SLIM DESIGN



**Figure 5:** Detailed dimensions of the COMeap adapter, showing its compact size of 24mm (0.94in) in length, 13mm (0.51in) in width, and 5mm (0.19in) in height.

## 9. WARRANTY AND SUPPORT

**Warranty:** This product is covered by a standard return policy, typically allowing returns or replacements within 30 days of purchase. Please refer to your retailer's specific return policy for detailed terms and conditions.

**Customer Support:** For technical assistance, troubleshooting, or warranty inquiries, please contact COMeap customer support through the retailer's platform or visit the official COMeap brand store for contact information. Ensure you have your product model number (USB2U32GHA) and purchase details ready when contacting support. COMeap Brand Store: <https://www.amazon.com/stores/COMeap/page/91CB33A6-5B79-45CB-A4C0-45D45F917073>

