

YS YOSE POWER Hailong 48V13Ah

YS YOSE POWER Hailong 48V13Ah Electric Bike Battery Instruction Manual

1. INTRODUCTION

This instruction manual provides essential information for the safe and efficient use of your YS YOSE POWER Hailong 48V13Ah Electric Bike Battery. Please read this manual thoroughly before installation and operation to ensure proper function and longevity of your battery.

2. SAFETY INFORMATION

Your electric bike battery is equipped with a built-in Battery Management System (BMS) for protection. Adhere to the following safety guidelines:

- Do not disassemble, puncture, or modify the battery.
- Avoid exposing the battery to extreme temperatures, direct sunlight, or fire.
- Use only the charger provided with the battery.
- Keep the battery away from water and moisture.
- Store the battery in a cool, dry place when not in use.
- In case of damage or unusual behavior, discontinue use immediately and contact support.

The integrated BMS provides protection against:

- Short circuit
- Overcharge
- Overdischarge
- Overvoltage
- Overcurrent
- Overtemperature



New Smart BMS



Short circuit
protection



Smart BMS
protection



Overvoltage
protection



Overcurrent
protection



Over temperature
protection



Over charge
protection

Image: Smart BMS protection features.

3. PACKAGE CONTENTS

Verify that all items are present in your package:

- 1 x Electric Bike Battery (48V13Ah)
- 1 x Battery Holder Base
- 1 x Charger (54.6V 2A)
- 2 x Keys
- 1 x Discharge Connector



Image: Included components of the YS YOSE POWER battery kit.

4. PRODUCT OVERVIEW

The YS YOSE POWER Hailong 48V13Ah Electric Bike Battery is designed for electric bicycles with 0-900W motors. It features a durable lithium-ion cell composition and a robust design for reliable performance.

Key Features:

- **High Capacity:** 48V 13Ah for extended range (40-160 km depending on conditions).
- **Advanced BMS:** Comprehensive protection against various electrical faults.
- **Secure Design:** Integrated lock to prevent theft.
- **Compatibility:** Suitable for 48V electric bike motors ranging from 0-900W.
- **Quick Charge:** Approximately 7 hours for a full charge.



Voltage
48V13Ah

Energy
625Wh

Cycle Life(time)
1000+

Weight(with holder)
4.0kg

Charge Time
7hours

Driven Distance
47~156km

Largest matching motor
48v1000w



Image: Battery dimensions and specifications.

Driven Distance

48V13Ah

POWER



45~55
km

ECO



150~160
km

Test condition

Temperature:20° Weight:72kg
Motor:48v350w Pedal assist



travel



work



sports

Image: Estimated driven distance based on riding mode and conditions.

5. SETUP AND INSTALLATION

Follow these steps to install the battery on your electric bike:

1. **Prepare the Bike:** Ensure your electric bike's downtube has mounting points compatible with the battery holder base.
2. **Mount the Holder:** Use the provided keys to unlock the battery holder base from the battery. Securely attach the battery holder base to your bike's downtube using appropriate screws (not included, typically supplied with the bike frame).
3. **Install the Battery:** Slide the battery onto the mounted holder base until it clicks into place. Use the key to lock the battery onto the frame to prevent theft.
4. **Connect Wiring:** Connect the discharge cable from the battery to your ebike motor's controller. Ensure the red wire connects to positive ('+') and the black wire to negative ('-').

Easy installation



1



2



3



PACKING LIST

Battery x 1

Charger x 1

Key x 2

Discharge connector x1

Image: Easy installation guide and packing list.

Releasing the Battery:

To remove the battery from the holder, use the key to unlock it. Then, push the battery holder downwards as indicated by the arrow on the base to release the battery from the holder.

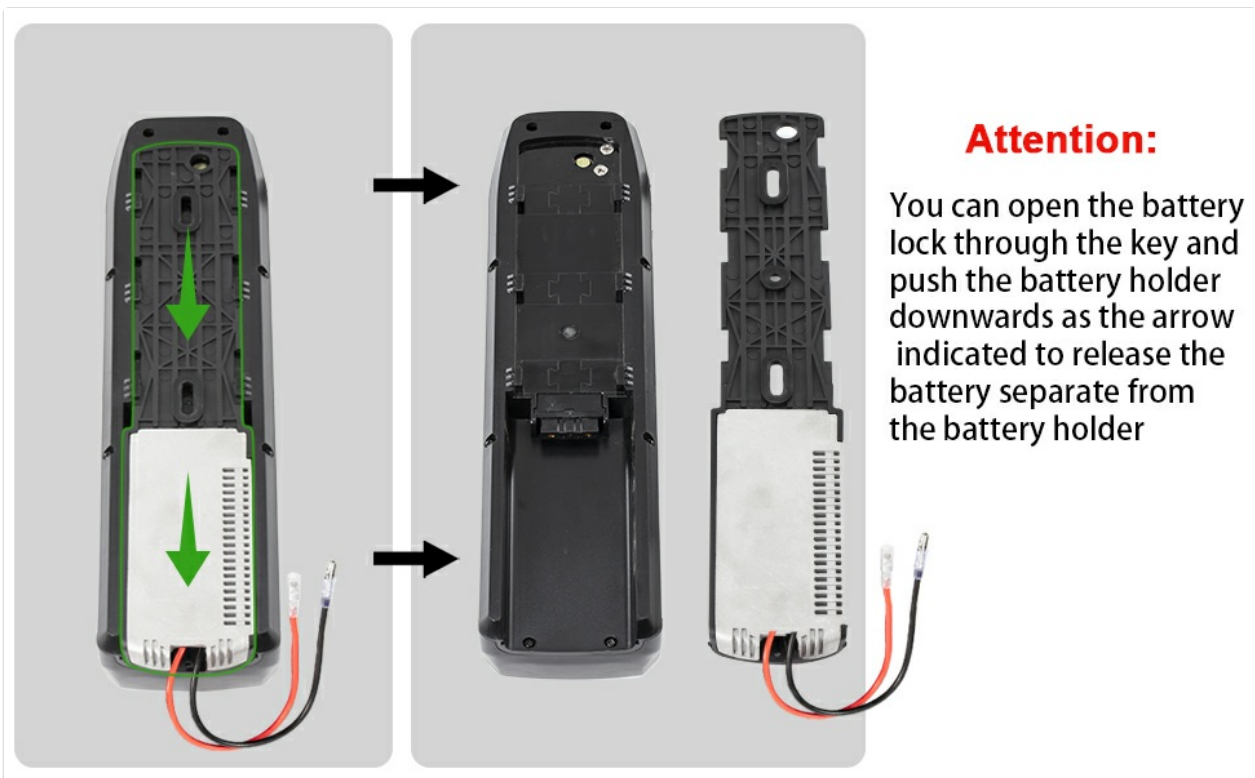


Image: Battery release mechanism.

6. OPERATING INSTRUCTIONS

Charging the Battery:


1. Ensure the battery is turned off before charging.
2. Connect the charger to a standard wall outlet.
3. Connect the charger's output plug to the battery's charge socket. The charge current for this socket cannot be more than 5 amps.
4. The charger indicator light will typically show red during charging and turn green when fully charged.
5. A full charge takes approximately 7 hours. Do not overcharge.
6. Disconnect the charger once charging is complete.

Battery Operation:

- **Power Switch:** The battery features a power switch. 'O' indicates power off, and '-' indicates power on.
- **Battery Level Indicator:** Press the power button for a long time to turn on the indicator light. It will turn off after 2 seconds. The indicator lights show the remaining power:
 - 4 green lights: 100% Power
 - 3 green lights: 75% Power
 - 2 green lights: 50% Power
 - 1 green light: 25% Power
- **Discharge Socket:** This is the main output port for connecting to your ebike motor. It has a standard 48V 10A output.



Battery level light

Press the  button the light will turn on.

 100% Power  75% Power  50% Power  25% Power

Safe lock

Lock, use to lock the battery on the frame.



Charge socket

The charge current for this socket can not be more than 5amps.

Power switch

Turn on and off the battery power.
“O” is power off, “-” power on.

Discharge socket

Discharge cable connect to ebike controller power cable
Red for positive “+”
Black for negative “-”



Image: Battery controls and indicators.

7. MAINTENANCE

Proper maintenance ensures the longevity and performance of your battery:

- **Regular Cleaning:** Wipe the battery and its contacts with a dry, soft cloth. Avoid using water or cleaning agents.
- **Storage:** If storing the battery for an extended period, charge it to approximately 50-60% capacity. Store in a cool, dry place between 0°C and 20°C (32°F and 68°F). Recharge every 2-3 months to prevent deep discharge.
- **Avoid Deep Discharge:** Do not completely drain the battery. Recharge it as soon as the power level is low.
- **Fuse Replacement:** The battery includes spare charge and discharge fuses. If a fuse is damaged, it can be replaced. Refer to the diagram for fuse locations.



We provide spare charge fuse and discharge fuse in the package, you can change the new one when the fuse damaged.

This fuse is used to protect charging

This fuse is used to protect discharging

Image: Fuse locations for charge and discharge protection.

8. TROUBLESHOOTING

If you encounter issues with your battery, consider the following:

- **Battery Not Charging:**

- Ensure the charger is properly connected to both the wall outlet and the battery.
- Check if the wall outlet is functional.
- Verify the charger's indicator light. If it remains green or off when connected, the charger or battery may be faulty.
- Check the charge fuse as described in the Maintenance section.

- **Battery Not Powering Bike:**

- Ensure the battery is fully charged and turned on.
- Check that the battery is securely locked into its holder.
- Verify all connections between the battery, controller, and motor are secure.
- Check the discharge fuse as described in the Maintenance section.
- Confirm your motor's wattage is within the compatible range (0-900W).

- **Reduced Range:**

- Battery performance can be affected by temperature, terrain, rider weight, and pedal assist level.
- Ensure the battery is fully charged before each ride.
- Over time, all batteries experience some capacity degradation.

If these steps do not resolve the issue, please contact customer support.

9. SPECIFICATIONS

Specification	Value
Brand	YS YOSE POWER
Model Name	Hailong
Style	48V13Ah (0-1000W) 4Pins Port
Battery Cell Composition	Lithium Ion
Battery Capacity	13 Amp Hours
Nominal Voltage	48V
Energy	625Wh
Standard Discharge Current	10A
Max Discharge Current	50A
Charger Output	54.6V 2A
Charge Time	Approx. 7 hours
Compatible Motor Wattage	0-900W
Item Dimensions (LxWxH)	14.4 x 3.5 x 4.4 inches
Item Weight	12.1 Pounds
Color	Black
Recommended Uses	Bicycle

10. WARRANTY INFORMATION

This YS YOSE POWER Electric Bike Battery comes with an **18-month warranty** from the date of purchase. The warranty covers manufacturing defects and material faults under normal use. It does not cover damage caused by misuse, accidents, unauthorized modifications, or improper maintenance.

Please retain your proof of purchase for warranty claims.

11. SUPPORT

For further assistance, technical support, or warranty inquiries, please contact YS YOSE POWER customer service. You can find more information and contact details on the official YS YOSE POWER store page:

[Visit the YS YOSE POWER Store on Amazon](#)