

Manuals.plus /

› VBESTLIFE /

› VBESTLIFE Mini 4 Keys Copy Paste Enter Macro Keypad User Manual

VBESTLIFE VBESTLIFE835b70pq4s-11

VBESTLIFE Mini 4 Keys Copy Paste Enter Macro Keypad User Manual

Model: VBESTLIFE835b70pq4s-11

1. PRODUCT OVERVIEW

The VBESTLIFE Mini 4 Keys Macro Keypad is a compact, programmable mechanical keyboard designed for efficiency in various applications, including office work, gaming, music production, and industrial control. It features four customizable keys, typically pre-programmed for common shortcuts like Ctrl, C, V, and Enter, and utilizes durable red mechanical switches.

Key Features:

- **4 Programmable Keys:** Designed with four keys (Ctrl, C, V, Enter) for a variety of programming settings and single-handed operation.
- **Plug and Play:** Simple connection without the need for complex driver installations. Settings are saved directly on the keypad, eliminating the need for re-configuration when switching devices.
- **Customizable Functions:** All key functions of a standard keyboard can be easily assigned, allowing for complex shortcut combinations.
- **USB Wired Connection:** Ensures stable and reliable performance.
- **Wide Compatibility:** Supports various operating systems including Dos, Windows, Linux, OS X Laptop, and Android.
- **Red Mechanical Switches:** Provides a responsive and tactile typing experience.
- **NKRO Support:** N-Key Rollover ensures all key presses are registered accurately, even during rapid input.



Image 1.1: The VBESTLIFE Mini 4 Keys Macro Keypad, showcasing its compact design and the four labeled keys: Ctrl, C, V, and Enter.

2. PACKAGE CONTENTS

Please verify that all items listed below are included in your package. If any items are missing or damaged, please contact customer support.

- 1 x VBESTLIFE Mini 4 Keys Programmable Keypad
- 1 x USB Cable



Image 2.1: The keypad and its accompanying USB cable, as found in the product package.

3. SPECIFICATIONS

Model Name	VBESTLIFE835b70pq4s-11
Brand	VBESTLIFE
Connectivity Technology	USB-A, USB-C
Keyboard Description	Gaming (Macro Keypad)
Recommended Uses	Gaming, Office, Music, Media, Industrial Control, Laboratory, Production Line Testing
Color	Black
Material	Acrylonitrile Butadiene Styrene (ABS)
Item Weight	2.68 ounces
Package Dimensions	7.87 x 5.12 x 1.57 inches
Compatible Devices	Laptop, PC (Dos, Windows, Linux, OS X, Android)

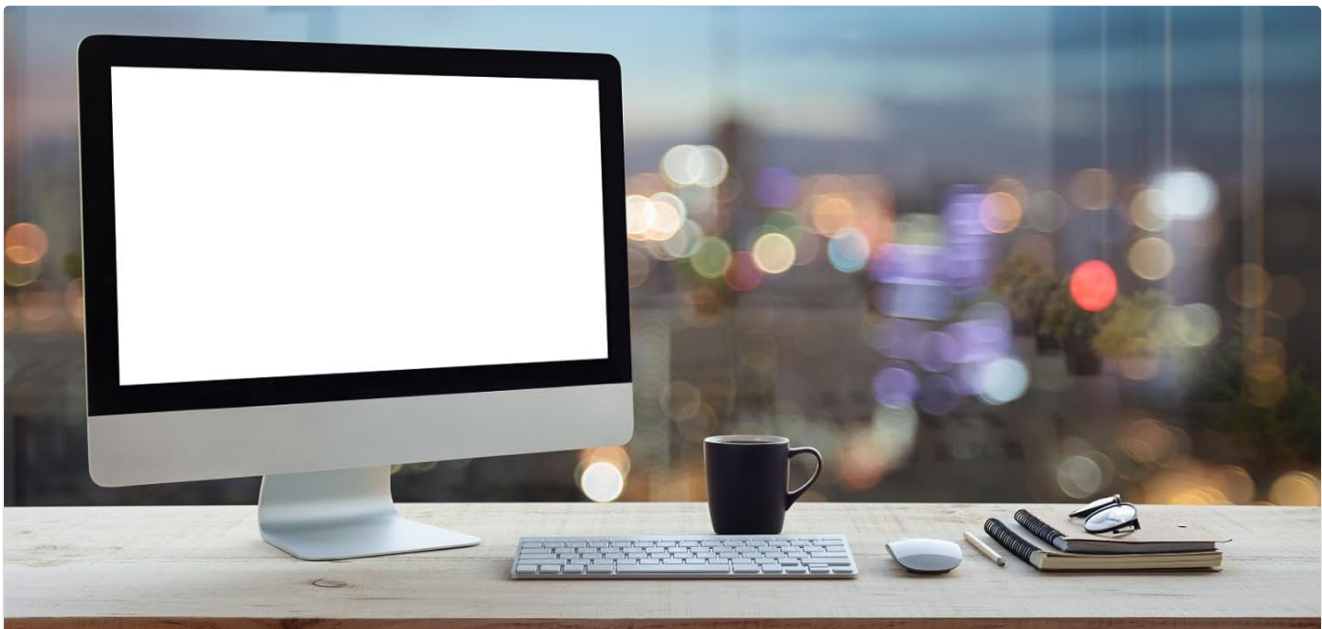
4. SETUP GUIDE

The VBESTLIFE Mini 4 Keys Macro Keypad is designed for simple plug-and-play functionality. Follow these steps to set up your device:

1. **Connect the USB Cable:** Locate the USB-C port on the back of the keypad. Insert one end of the provided USB cable into this port.
2. **Connect to Computer:** Insert the other end of the USB cable (USB-A) into an available USB port on your computer or compatible device.
3. **System Recognition:** Your operating system should automatically detect and install the necessary drivers for the keypad. This process usually takes a few seconds. No additional software installation is typically required for basic functionality.
4. **Verify Functionality:** Once connected, the default functions (Ctrl, C, V, Enter) should be immediately available. Test each key to ensure proper operation.



Image 4.1: Rear view of the keypad, highlighting the USB-C connection port for easy setup.



All key functions of standard keyboard can be easily set.

Thus the complicated combination of shortcut keys can be realized

Suitable for office, music, media, industrial control, laboratory, production line testing.

Suitable for Dos, for Win, for Linux, for OS X Laptop, for Android, etc.



Image 4.2: The keypad connected to a computer, demonstrating its use in a typical workstation environment. It is compatible with various operating systems including Dos, Windows, Linux, OS X Laptop, and Android.

5. OPERATING INSTRUCTIONS

The VBESTLIFE Mini 4 Keys Macro Keypad offers programmable functionality, allowing you to customize each of its four keys to suit your specific needs. The default keys are Ctrl, C, V, and Enter.

5.1 Default Key Functions

- **Ctrl:** Functions as the Control key.
- **C:** Functions as the 'C' key, often used in combination with Ctrl for 'Copy'.
- **V:** Functions as the 'V' key, often used in combination with Ctrl for 'Paste'.
- **Enter:** Functions as the Enter key.

5.2 Programming the Keypad

The keypad's programmable design allows you to assign any standard keyboard function or complex shortcut combination to its keys. The settings are saved directly within the keypad's internal memory, meaning you do not

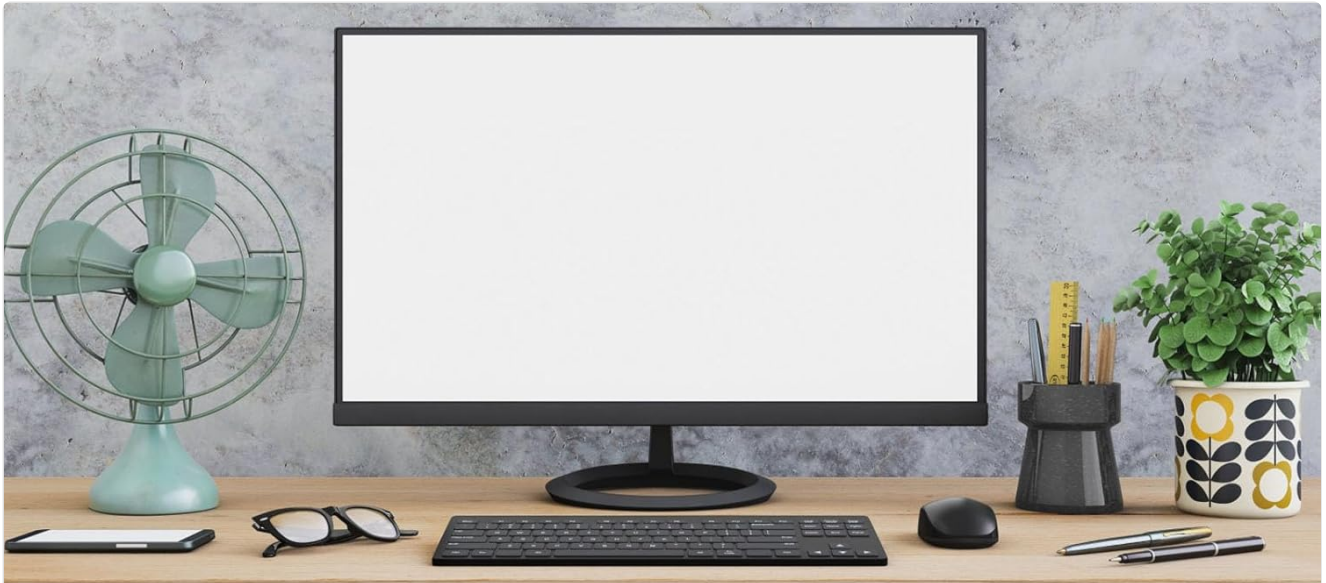
need to re-program it when connecting to a different device.

To program the keypad, you will typically need to use a dedicated software provided by the manufacturer or a third-party macro programming tool compatible with generic USB HID devices. Please refer to the manufacturer's website or included software (if applicable) for detailed instructions on how to access and use the programming interface.

Key Programming Capabilities:

- Assign single key presses (e.g., 'A', 'F1', 'Space').
- Assign modifier key combinations (e.g., Ctrl+Z, Alt+Tab, Shift+Delete).
- Assign complex macro sequences (e.g., a series of key presses for a specific task).

The keypad supports N-Key Rollover (NKRO), ensuring that all simultaneous key presses are registered accurately, which is beneficial for rapid input scenarios in gaming or complex data entry.



designed with 4 keys,
including Ctrl, C, V and Enter
repetitive settings are allowed
Settings can be saved in the keyboard,
and you do not need to set them again
when changing the device.
Programmable Design

Image 5.1: The keypad illustrating its programmable design. Repetitive settings are allowed, and configurations are saved on the device, eliminating the need for re-setting when changing devices.



Image 5.2: A close-up of the keypad's keys, revealing the red mechanical switches underneath, which provide tactile feedback and durability.

6. CARE AND MAINTENANCE

Proper care and maintenance will extend the lifespan of your VBESTLIFE Mini 4 Keys Macro Keypad.

- **Cleaning:** Use a soft, dry cloth to wipe the surface of the keypad. For stubborn dirt, slightly dampen the cloth with water or a mild, non-abrasive cleaner. Avoid excessive moisture.
- **Dust Removal:** Use compressed air to remove dust and debris from between the keys.
- **Avoid Liquids:** Do not expose the keypad to liquids. In case of accidental spills, immediately disconnect the keypad from your computer and allow it to dry completely before reconnecting.
- **Storage:** Store the keypad in a cool, dry place away from direct sunlight and extreme temperatures.
- **Handling:** Avoid dropping the keypad or subjecting it to strong impacts, as this may damage internal components.

7. TROUBLESHOOTING

If you encounter issues with your VBESTLIFE Mini 4 Keys Macro Keypad, please refer to the following troubleshooting steps:

7.1 Keypad Not Responding

- **Check USB Connection:** Ensure the USB cable is securely connected to both the keypad and your computer. Try plugging it into a different USB port.
- **Test with Another Device:** Connect the keypad to another computer or compatible device to determine if the

issue is with the keypad or the original device.

- **Restart Computer:** Sometimes a simple system restart can resolve connectivity issues.
- **Check Device Manager (Windows):** Open Device Manager and check under 'Keyboards' or 'Human Interface Devices' to see if the keypad is recognized and if there are any error symbols.

7.2 Keys Not Performing Assigned Functions

- **Verify Programming:** If you have programmed the keys, ensure the correct functions were saved. Re-program the keys if necessary.
- **Software Conflicts:** Check if any other software or applications are interfering with the keypad's input. Temporarily close other programs and test again.
- **Reset to Default:** If programming issues persist, consider resetting the keypad to its factory default settings (refer to programming software instructions for this option).

7.3 Intermittent Connectivity

- **Inspect USB Cable:** Check the USB cable for any signs of damage (frays, bends). A damaged cable can cause intermittent connections. Try using a different USB cable if available.
- **USB Port Issues:** Ensure the USB port on your computer is functioning correctly. Try a different port.

8. WARRANTY AND SUPPORT

VBESTLIFE products are manufactured to high-quality standards. For specific warranty information, please refer to the documentation included with your purchase or visit the official VBESTLIFE website. In most cases, products come with a limited warranty covering manufacturing defects.

For technical support, troubleshooting assistance, or warranty claims, please contact VBESTLIFE customer service through their official channels. When contacting support, please have your product model number (VBESTLIFE835b70pq4s-11) and purchase details ready.

Manufacturer: VBESTLIFE

Online Support: Please visit the VBESTLIFE Store on Amazon or their official website for contact information and support resources.

