

## JUBEST JUBEST Sliding Barn Door-KDA06-42B

# JUBEST 42" x 84" Glass Sliding Barn Door Instruction Manual

Model: JUBEST Sliding Barn Door-KDA06-42B

## INTRODUCTION

This manual provides detailed instructions for the assembly, installation, operation, and maintenance of your JUBEST 42" x 84" Glass Sliding Barn Door. This door features a durable aluminum frame and frosted tempered glass, designed for smooth and quiet operation. Please read all instructions carefully before beginning installation to ensure proper setup and safe use.

## SAFETY INFORMATION

- Always wear appropriate safety gear, including gloves and eye protection, during assembly and installation.
- Ensure the mounting surface (wall) is structurally sound and capable of supporting the weight of the door and hardware. Consult a professional if unsure.
- Keep children and pets away from the work area during installation.
- Handle glass panels with extreme care to prevent breakage and injury.
- Do not modify the product or use non-approved parts, as this may void the warranty and create safety hazards.
- Ensure all fasteners are securely tightened before using the door.

## PACKAGE CONTENTS

Verify that all components listed below are present and undamaged before beginning assembly.

- 2 Glass panels
- 1 Metal panel
- 2 Rails
- 5 Rail fixings
- 2 Rollers
- 2 Door stoppers
- 2 Floor guides

- 2 Anti-jump pads
- Necessary screws and wrenches

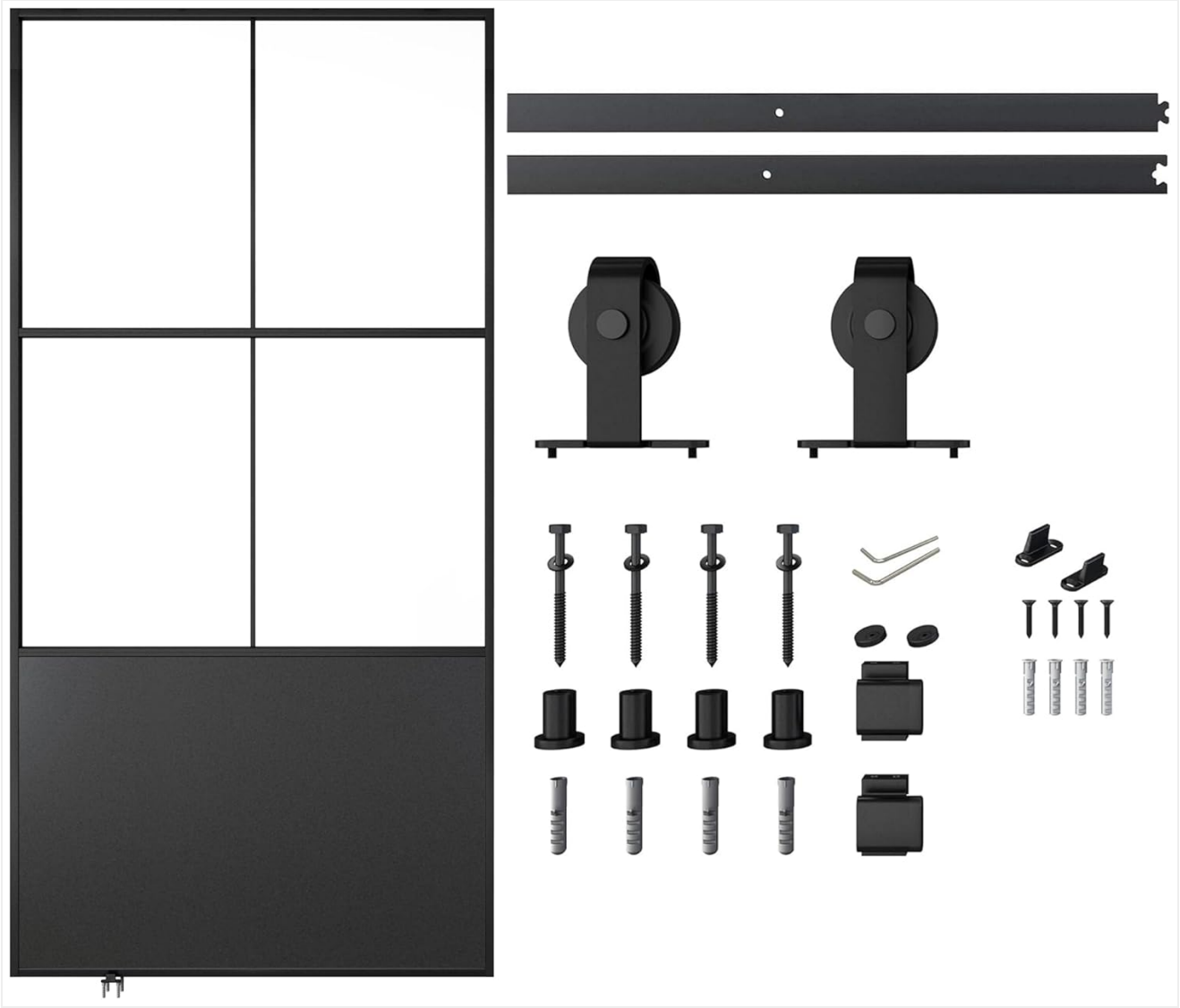


Image: All components included in the JUBEST Sliding Barn Door package, showing glass panels, metal panel, rails, rollers, and various hardware pieces.

## SPECIFICATIONS

Brand	JUBEST
Model Number	JUBEST Sliding Barn Door-KDA06-42B
Size	42 x 84 inches
Product Dimensions	1.36 x 42.03 x 83.97 inches
Color	Black
Material	Aluminum, Glass
Style	Modern
Item Weight	50 Pounds

Assembly Required

Yes



Image: Detailed dimensions of the JUBEST Sliding Barn Door, showing overall width, height, and door thickness.

## SETUP AND INSTALLATION

The JUBEST sliding barn door is designed for straightforward installation. Follow these steps carefully.

### Step 1: Assemble the Door Panels

Connect the glass panels and metal panel to form the complete door structure. The panels are pre-drilled for easy alignment. Ensure all connections are secure.

### Step 2: Connect the Rail

Join the two rail sections together. Ensure the connection is flush and stable.

### Step 3: Install the Hardware

Mount the rail fixings to your wall, ensuring they are aligned with wall studs for maximum support. Attach the rollers to the top of the assembled door. Install the anti-jump pads and door stoppers onto the rail.

### Step 4: Hang the Door

Carefully lift the assembled door and hang the rollers onto the installed rail. Adjust the door stoppers to define the open and closed positions. Install the floor guides to prevent the door from swinging.

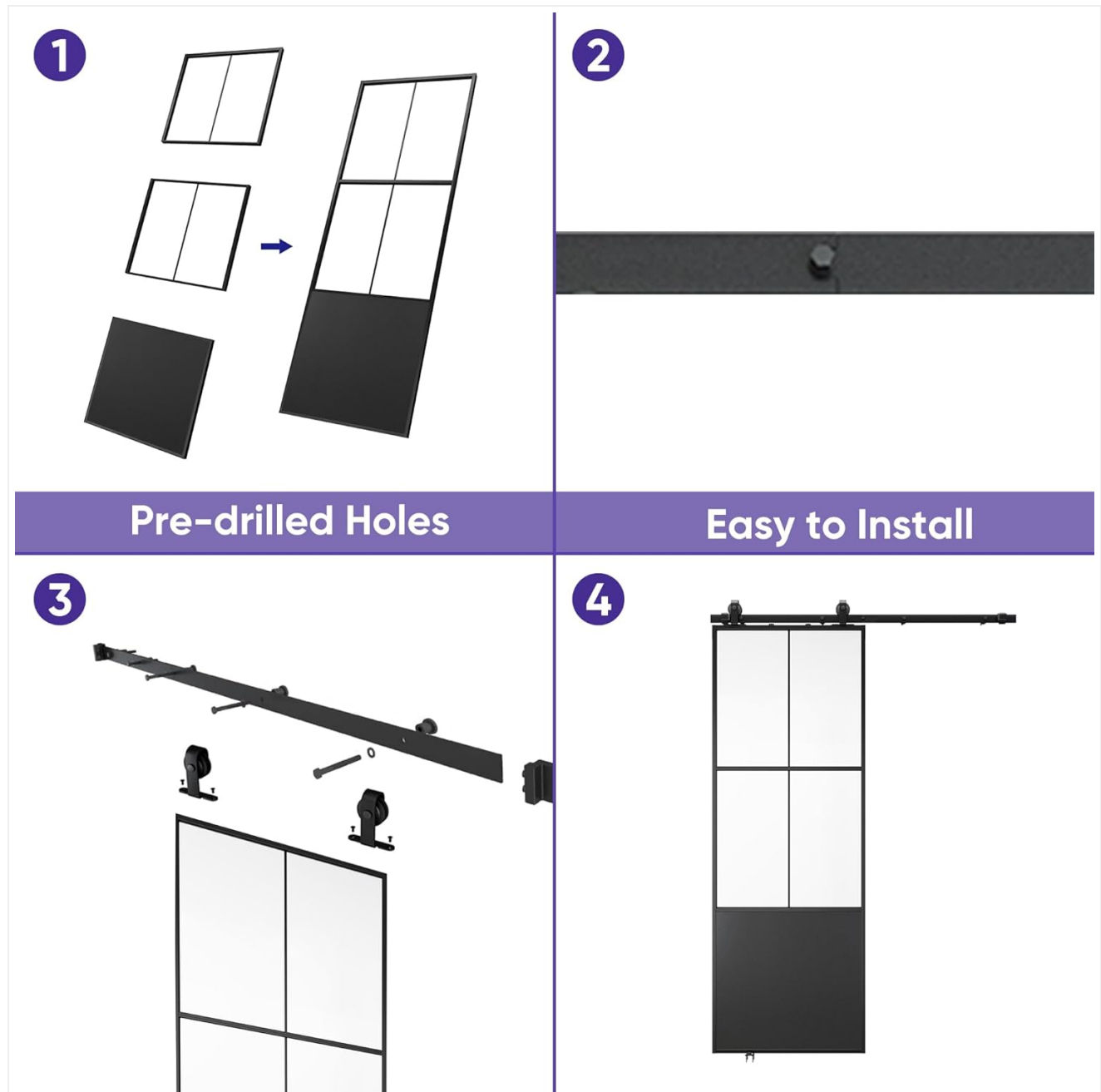


Image: A visual guide illustrating the four main steps of installation: assembling panels, connecting the rail, installing hardware, and hanging the door.

### Customization Option: Decorative Stripes

The sliding barn door includes extra stripes, allowing you to customize the door's appearance. You can choose to apply these stripes to create a different aesthetic for your door.

With or without stripes, you can decide the style you like



Image: Two versions of the JUBEST Sliding Barn Door, one with decorative horizontal and vertical stripes on the glass panels, and one without, demonstrating style options.

## OPERATION

---

Your JUBEST sliding barn door is designed for smooth and quiet operation. To open or close the door, gently push or pull it along the top-mounted rail. The rollers facilitate effortless movement.

### Key Operational Features:

- **Smooth Sliding Pulley:** The door utilizes a smooth sliding pulley system for quiet and easy movement.
- **Premium Anti-jump Pad:** Anti-jump pads are installed to ensure the door remains securely on the track and prevents it from lifting off the rail during operation.
- **Adjustable Door Stoppers:** The included door stoppers can be adjusted along the rail to control how far the door opens or closes, allowing you to customize its travel path.
- **Floor Guide:** A floor guide is installed at the bottom to prevent the door from swinging away from the wall as it slides.



Image: Close-up view of the smooth sliding pulley system, highlighting its design for quiet and durable operation.



Image: Close-up view of the premium anti-jump pad, designed to keep the door securely on the track.



Image: Close-up view of an adjustable door stopper, which can be positioned to limit the door's travel.



Image: Close-up view of the floor guide, installed to prevent the door from swaying.

## MAINTENANCE

---

- **Cleaning the Glass:** Use a soft, lint-free cloth and a non-abrasive glass cleaner to clean the frosted tempered glass panels. Avoid harsh chemicals that may damage the frosting.
- **Cleaning the Frame:** Wipe the aluminum frame with a soft, damp cloth. For stubborn dirt, a mild soap solution can be used, followed by rinsing and drying.
- **Hardware Check:** Periodically inspect all screws and fasteners to ensure they remain tight. Re-tighten if necessary.
- **Lubrication:** If the door's sliding action becomes less smooth over time, a silicone-based lubricant can be

applied sparingly to the rail and roller wheels.

## TROUBLESHOOTING

---

- **Door not sliding smoothly:** Check the rail for obstructions or debris. Ensure the rollers are clean and properly aligned on the track. Apply lubricant if needed.
- **Door is wobbly or swings:** Verify that the floor guide is correctly installed and adjusted. Check all rail fixings and door panel connections for tightness.
- **Door stoppers not holding position:** Ensure the door stoppers are securely tightened on the rail. Adjust their position as required.
- **Noise during operation:** Inspect rollers and rail for any foreign objects or wear. Lubricate the rollers and track if friction is causing noise.

## WARRANTY AND SUPPORT

---

JUBEST is committed to providing quality products. This product comes with a manufacturer's warranty. For specific warranty details, claims, or technical support, please refer to the warranty card included in your package or contact JUBEST customer service directly. Our professional team is available to assist you with any issues or questions.