

Micool BT-X

Micool BT-X Bluetooth V5.3 Clip-On Wireless Headphones User Manual

1. INTRODUCTION

Thank you for choosing the Micool BT-X Bluetooth V5.3 Clip-On Wireless Headphones. This manual provides essential information for setting up, operating, and maintaining your headphones to ensure optimal performance and longevity. Please read this manual thoroughly before first use and retain it for future reference.

2. PACKAGE CONTENTS

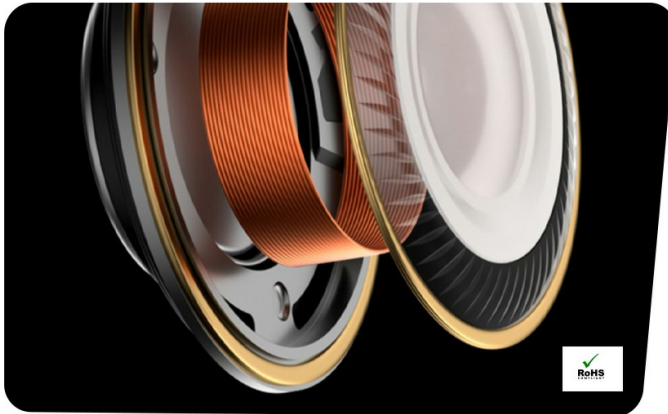
- Micool BT-X Wireless Headphones (Left and Right)
- Charging Case
- USB-C Charging Cable
- User Manual

3. PRODUCT OVERVIEW

The Micool BT-X headphones are designed for comfort and high-quality audio, featuring an open-ear design with earhooks. They incorporate Bluetooth 5.3 technology for stable connections and 28mm speakers for clear stereo sound and powerful bass. Four integrated microphones enhance call clarity by reducing ambient noise.



Image: Micool BT-X Headphones and Charging Case



Sound quality is good
28mm neodymium magnetic horn

The 28mm diameter driver unit can reproduce clear sound, while the Ø 28mm large diameter driver of neodymium magnets can produce rich sound.

Image: Internal structure highlighting the 28mm neodymium magnetic horn for enhanced sound quality.

Clear Call 4 Mics , Noise Cancelling

The BT-X has 4 microphones and is equipped with call noise reduction, allowing the other party to hear your voice clearly in noisy environments.



Image: User demonstrating clear call functionality with Micool BT-X headphones, featuring 4 microphones for noise cancellation.

4. GETTING STARTED: FIRST USE AND PAIRING

4.1 Initial Setup

Before first use, ensure you remove the charging protection insulation film from both earbuds. This film prevents charging during shipping.



Video: Demonstrates removing the charging protection insulation film and initiating Bluetooth pairing for first-time use.

4.2 Bluetooth Pairing

1. Ensure the headphones are fully charged and the insulation film has been removed.
2. Open the charging case lid. The headphones will automatically enter Bluetooth pairing mode, indicated by a green light flashing intermittently on the earbuds.
3. On your device (smartphone, tablet, laptop), enable Bluetooth.
4. Search for available Bluetooth devices and select 'Micool BT-X' from the list.
5. Once connected, the green light on the earbuds will stop flashing, indicating successful pairing.

The headphones will automatically reconnect to the last paired device when removed from the charging case and within range.

BLUETOOTH 5.3 Compatibility with computers and phones

BT-X supports Bluetooth enabled computer connections and supports all phone models.



Image: Micool BT-X headphones demonstrating compatibility with various devices including laptops and smartphones via

5. WEARING THE HEADPHONES

For optimal sound and comfort, wear the headphones correctly as shown below:

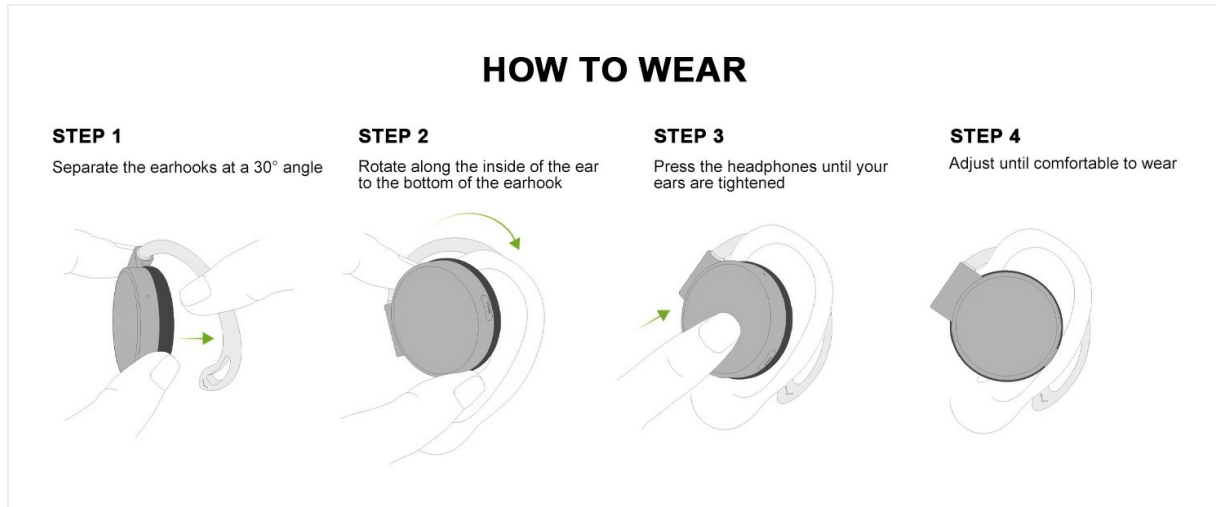


Image: Step-by-step guide on how to wear the Micool BT-X headphones.

1. **Step 1:** Separate the earhooks at a 30-degree angle.
2. **Step 2:** Rotate the earhook along the inside of your ear to the bottom.
3. **Step 3:** Press the headphones gently until they feel secure on your ears.
4. **Step 4:** Adjust for a comfortable and stable fit. The sponge earmuffs are designed for comfort during extended wear.

6. OPERATING INSTRUCTIONS

The Micool BT-X headphones feature multi-function buttons on each earbud for easy control.

6.1 Music Control

- **Play/Pause:** Single press the multi-function button on either earbud.
- **Next Song:** Double press the multi-function button on the right earbud.
- **Previous Song:** Double press the multi-function button on the left earbud.
- **Volume Up:** Triple press the multi-function button on the right earbud.
- **Volume Down:** Triple press the multi-function button on the left earbud.

6.2 Call Control

- **Answer/End Call:** Single press the multi-function button on either earbud.
- **Reject Call:** Press and hold the multi-function button on either earbud for 2 seconds.

6.3 Voice Assistant

- **Activate Voice Assistant:** Press and hold the multi-function button on either earbud for 3 seconds.

7. CHARGING

The Micool BT-X headphones offer extended battery life with their charging case.

- **Headphone Battery Life:** Up to 15 hours of music playback on a single full charge.
- **Total Battery Life with Case:** The charging case provides approximately 3 additional full charges, extending total listening time up to 42 hours.
- **Charging the Case:** Connect the provided USB-C cable to the charging port on the case and a power source. The battery indicator on the case will show the charging status and remaining battery capacity.
- **Charging the Headphones:** Place the headphones into the charging case. They will automatically begin charging.



Long Battery Life

The BT-X has a sufficiently large battery capacity to meet all your needs without worrying about battery power.

Image: Visual representation of the extended battery life for Micool BT-X headphones and their charging case.

8. SPECIFICATIONS

Feature	Specification
Brand	Micool
Model Number	BT-X
Bluetooth Version	5.3
Connectivity Technology	Wireless
Ear Placement	On Ear
Battery Average Life	15 Hours (Headphones), 42 Hours (with Charging Case)
Control Type	Voice Control
Control Method	Touch, Voice
Audio Driver Type	Dynamic Driver (28mm speakers)
Microphones	4 (with Noise Cancelling)
Compatible Devices	Cellphones, Tablets, Laptops, Desktops

9. TROUBLESHOOTING

- **Cannot Pair with Device:**

Ensure the headphones are charged and the insulation film is removed. Turn off Bluetooth on other nearby devices. Restart your device and try pairing again. If issues persist, reset the headphones (refer to manufacturer's website for specific reset instructions if not in manual).

- **No Sound or Low Volume:**

Check the volume levels on both your device and the headphones. Ensure the headphones are properly connected to your device. Try playing audio from a different application or device.

- **Intermittent Connection:**

Ensure there are no obstructions between the headphones and your device. Stay within the Bluetooth range (up to 10 meters). Avoid environments with strong electromagnetic interference.

- **Headphones Not Charging:**

Verify the USB-C cable is securely connected to both the charging case and the power source. Ensure the headphones are correctly seated in the charging case. Check the charging case's battery level.

10. SAFETY INFORMATION

- Do not expose the headphones or charging case to extreme temperatures, humidity, or liquids.
- Avoid dropping, impacting, or disassembling the product.
- Use only the provided charging cable or a certified USB-C cable for charging.
- Clean the headphones with a soft, dry cloth. Do not use harsh chemicals.
- Prolonged listening at high volumes may cause hearing damage. Adjust volume to a safe level.
- Be aware of your surroundings when using headphones, especially in traffic or hazardous situations.

11. WARRANTY AND SUPPORT

Micool products come with a standard warranty. For detailed warranty information, product support, or service inquiries, please refer to the official Micool website or contact customer service through your purchase platform.

Micool is committed to providing 24-hour after-sales service for all purchased items.

Website: [Visit the Micool Store on Amazon](#)