

Manuals.plus /

› Assark /

› Assark Solar Trail Camera 48MP 30FPS, WiFi Bluetooth Game Camera with Motion Activated 0.2s Trigger, Night Vision Motion Activated IP66 Waterproof for Wildlife Scouting with 32GB Micro SD Card Grey User Manual

Assark PH960W

Assark Solar Trail Camera User Manual

Model: PH960W



1. INTRODUCTION

Thank you for choosing the Assark Solar Trail Camera. This advanced game camera is designed for wildlife observation, outdoor monitoring, and home security, offering high-resolution imaging, rapid trigger speed, and convenient wireless connectivity. With its integrated solar panel and robust waterproof design, it provides reliable performance in various outdoor conditions. This manual will guide you through the setup, operation, and maintenance of your new camera.

2. PACKAGE CONTENTS

Please verify that all items are present in your package:

- 1 x Assark Trail Camera
- 1 x Solar Panel
- 1 x 32GB Micro SD Card (pre-installed)
- 1 x USB Type-C Cable
- 1 x User Manual
- 1 x Threaded Tripod
- 1 x Screw Accessories (for mounting)
- 1 x Installation Belt

2 Ways to Mount



Image: All components included in the Assark Solar Trail Camera package.

3. PRODUCT OVERVIEW

The Assark Solar Trail Camera combines advanced imaging technology with sustainable power solutions. It features a durable, camouflage-patterned casing designed for outdoor environments.

3.1 Key Features

- **High-Resolution Imaging:** Captures 48MP still photos and 1080P video at 30 frames per second.
- **Fast Trigger Speed:** Activates in less than 0.2 seconds upon motion detection.
- **Night Vision:** Equipped with 850nm low-glow infrared LEDs for clear nighttime recordings up to 65 feet without disturbing wildlife.
- **Solar Powered:** Integrated solar panel and rechargeable lithium battery provide continuous power, reducing the need for frequent battery changes.
- **Wireless Connectivity:** Built-in low-power WiFi and Bluetooth for remote control and data transfer via the "TrialCam Go" mobile app (connection range up to 45ft).
- **Durable Design:** IP66 waterproof and dustproof rating ensures functionality in extreme weather conditions.

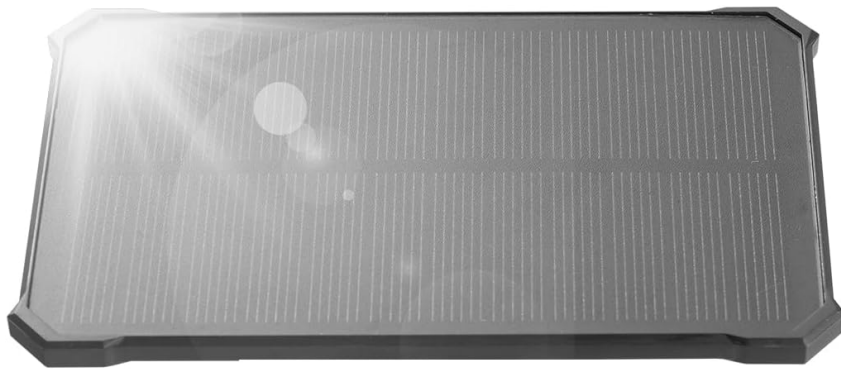


Image: The Assark Solar Trail Camera, showing its main components including the camera unit, solar panel, and a 32GB Micro SD card.



Image: The camera demonstrating its rechargeable and solar dual power capabilities, with a view of the built-in 2000mAh battery.

4. SETUP

4.1 Initial Charging

Before first use, it is recommended to fully charge the camera's built-in lithium battery using the provided USB Type-C cable. Connect the cable to the camera's Type-C port and a standard USB power adapter (not included).

4.2 Micro SD Card Installation

The camera comes with a 32GB Micro SD card pre-installed. If you need to replace it or use a larger capacity card (up to 256GB), ensure the camera is off. Open the camera's casing, locate the Micro SD card slot, and insert or remove the card as needed. Ensure it clicks into place.

4.3 Mounting the Camera

The camera offers versatile mounting options:

- **Tree/Pole Mounting:** Use the provided installation belt to secure the camera to a tree or pole.

- **Tripod Mounting:** Attach the camera to the threaded tripod for placement on flat surfaces or for specific angles.
- **Wall Mounting:** Use the screw accessories to mount the camera to a wall or other solid surface.

Position the solar panel to receive maximum direct sunlight for optimal charging. The solar panel can be mounted separately from the camera if needed, up to 5 feet away, to ensure it catches sunlight even if the camera is in a shaded area.

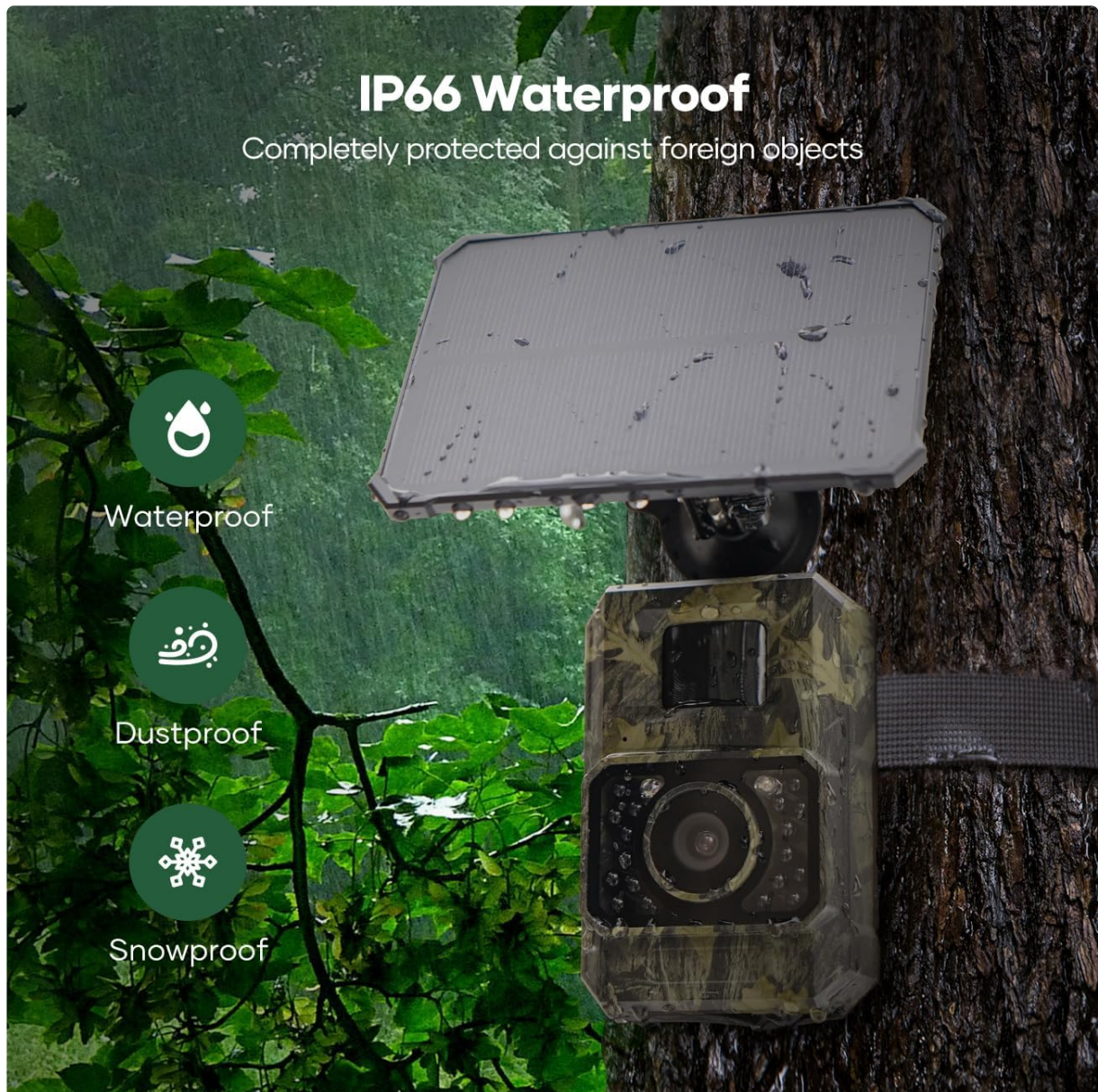


Image: The camera mounted on a tree, highlighting its IP66 waterproof, dustproof, and snowproof capabilities.

4.4 App Installation and Connection

Download the free "TrialCam Go" app from your mobile device's app store (iOS/Android). This app allows you to control camera settings, preview images/videos, and download content wirelessly.

1. Turn on your phone's WiFi and Bluetooth. Ensure it's not connected to home WiFi or other Bluetooth devices.
2. Switch "ON" the camera.
3. Open the "TrialCam Go" app and connect to the camera's built-in hotspot WiFi. The connection range is approximately 45ft.
4. Once connected, you can click "Settings" to adjust camera parameters or "Gallery" to view and download images.



Image: Visual guide for connecting the camera to the "TrialCam Go" app using WiFi and Bluetooth.

Wireless Connection

App Control & Easy Setup



Free App
(ios/Android)



Download
pictures and videos



45FT Remote
App Control



Built in Wifi
Bluetooth Modules

45FT



Note:

The Wifi Bluetooth connection range is within 45FT

Image: Diagram illustrating the wireless connection between the camera and a smartphone for app control and easy setup, with a 45ft range.

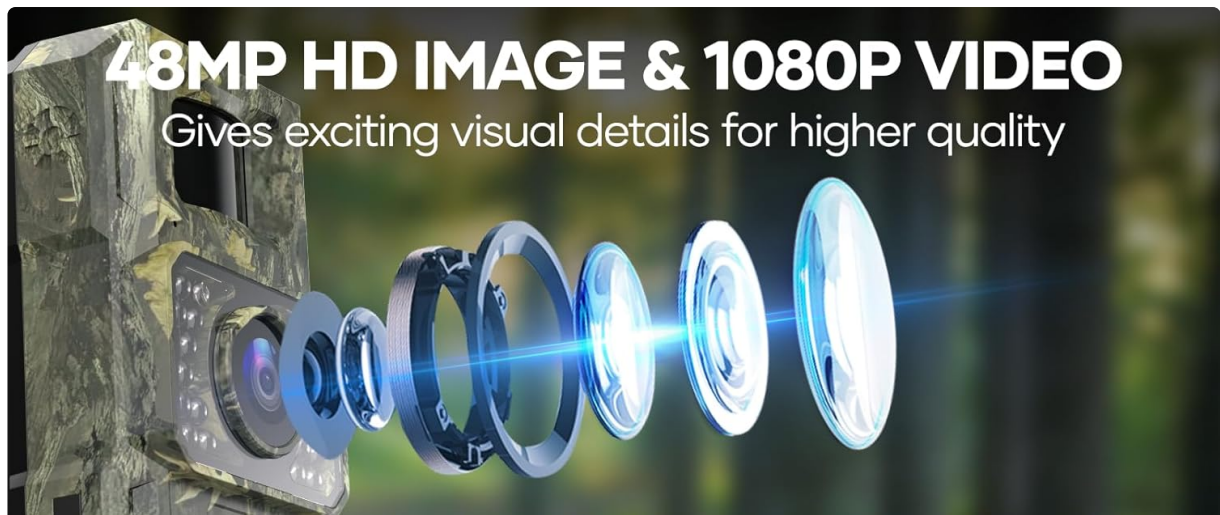
5. OPERATING THE CAMERA


5.1 Photo and Video Modes


The camera automatically captures high-quality images and videos when motion is detected. You can configure the resolution and duration settings via the mobile app.


48MP HD IMAGE & 1080P VIDEO


Gives exciting visual details for higher quality




 **48MP Image**



 **19° C / 66° F 03/08/2023 11:14:40**

 **1080p Video**



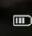
 **19° C / 66° F 03/08/2023 11:14:40**

Image: Examples of 48MP HD images and 1080P videos captured by the camera, showcasing visual detail.

5.2 Motion Detection and Trigger Speed

The adjustable PIR sensor ensures that the camera captures wildlife with a rapid 0.2-second trigger speed, minimizing missed moments. The detection range is up to 20 meters (65 feet).

0.2s Fast Trigger Speed

Never miss any movements in detection range

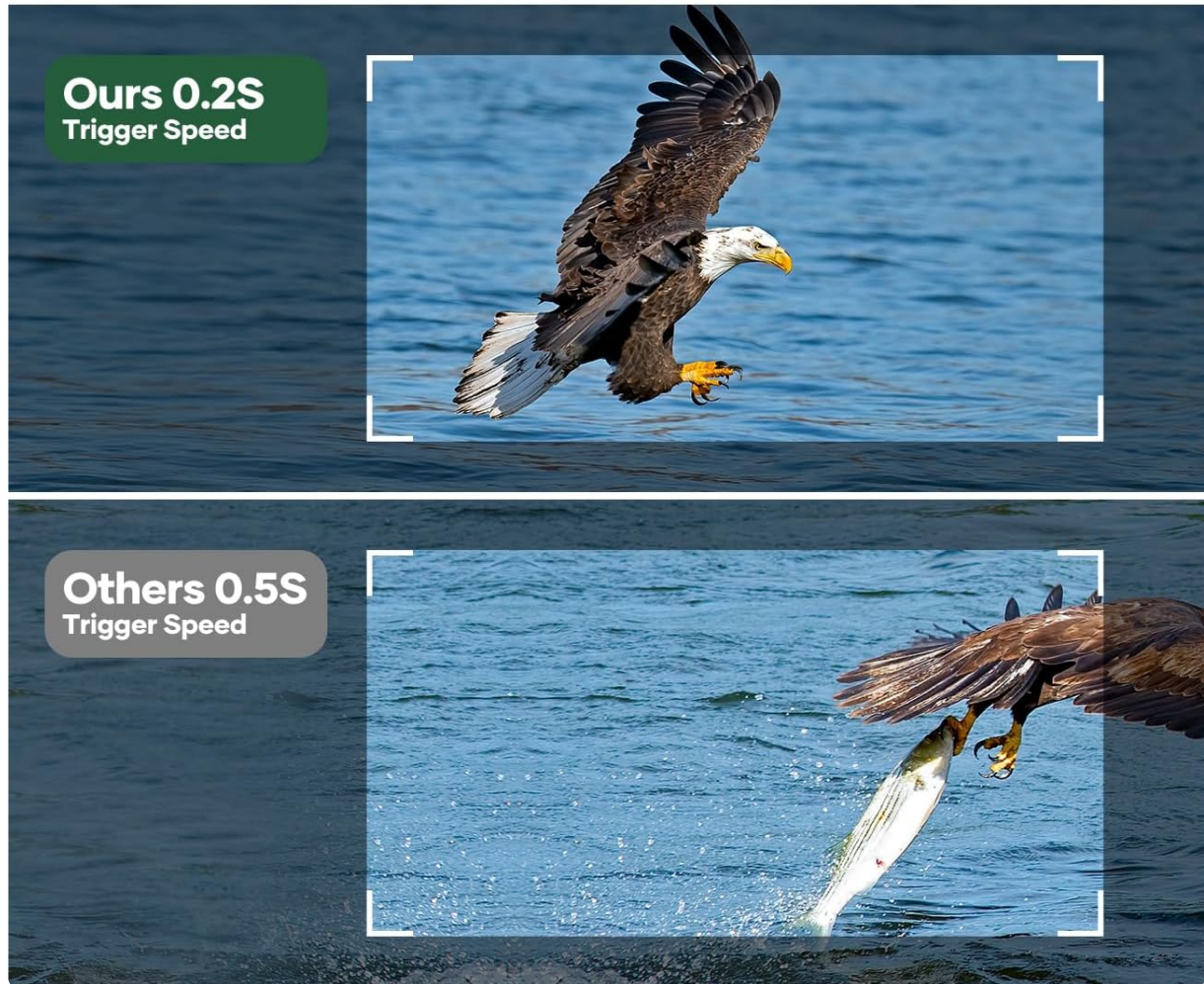


Image: Illustrates the fast 0.2-second trigger speed of the camera, capturing fast-moving subjects like a bald eagle.

5.3 Night Vision Capabilities

The camera's upgraded 850nm low-glow infrared LEDs provide clear night vision up to 65 feet, allowing for detailed images and videos in low-light conditions without startling animals.

65FT SUPER NIGHT VISION

Captures crisp photos & videos without spooking animals

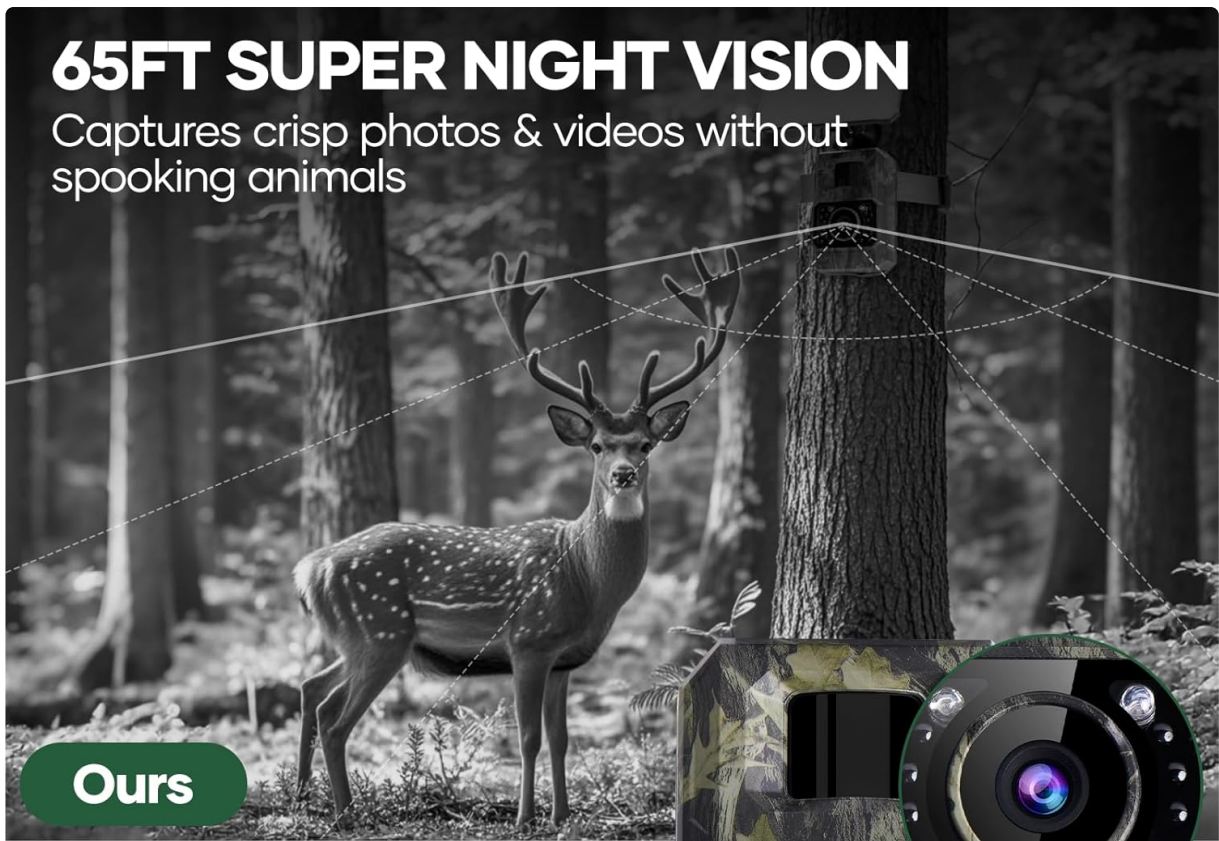


Image: A deer captured by the camera's 65ft super night vision, demonstrating crisp photos and videos in low light.

65Ft SUPER NIGHT VISION

Crisp photos and videos without spooking animals

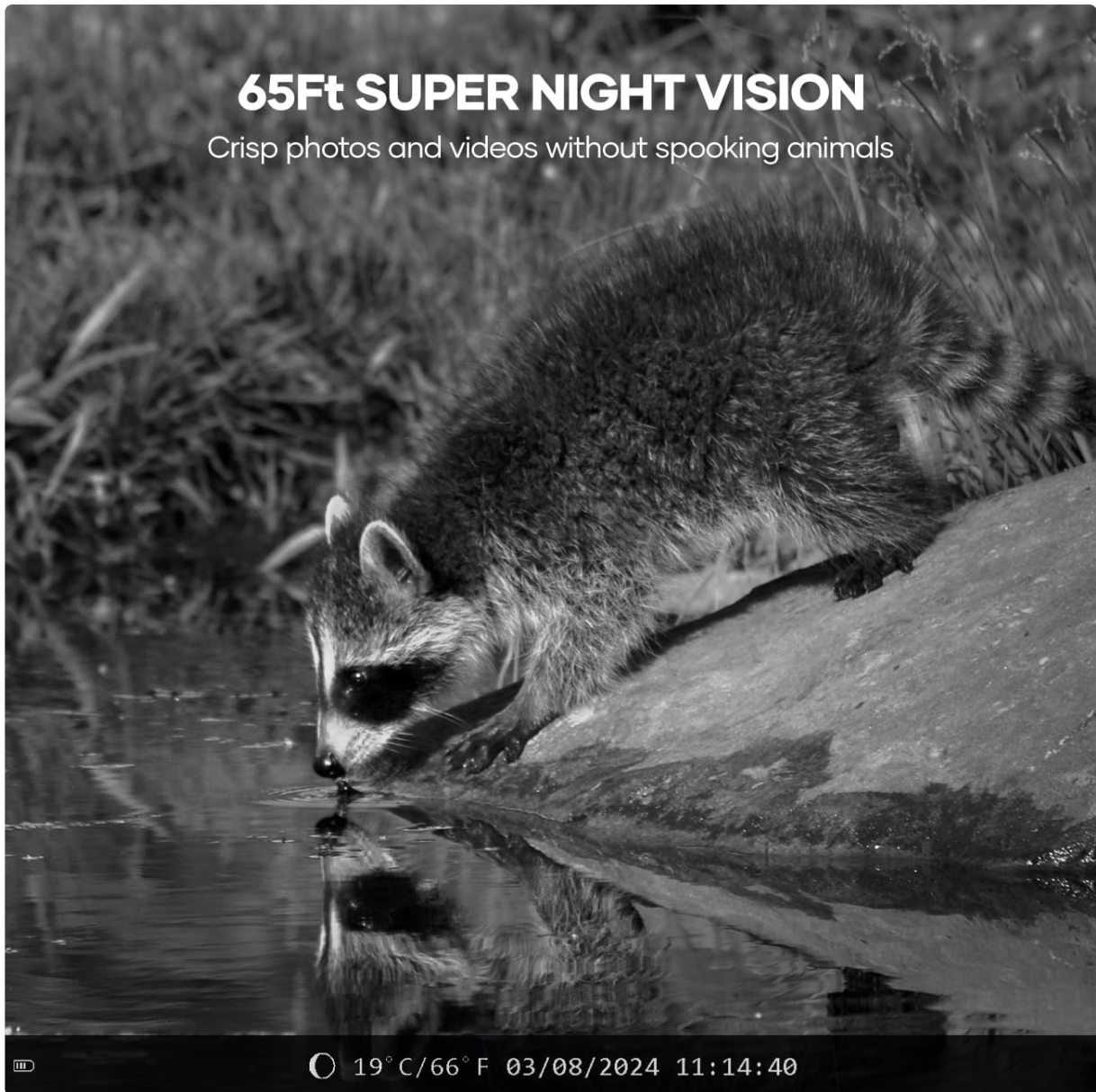


Image: A raccoon drinking water, captured with the camera's 65ft super night vision, showing clear detail at night.

5.4 App Features and Playback

The "TrialCam Go" app offers comprehensive control and viewing options:

- **Live Preview & Download:** View live footage and download photos/videos directly to your smartphone.
- **Custom Detection Areas:** Define specific areas for motion detection to avoid false triggers from swaying leaves or small insects.
- **Target Recording Time:** Set specific time periods for the camera to be active.
- **Multiple Playback Methods:** Access recordings via the app, directly connecting the camera to a computer with the Type-C cable, or by using an SD card reader.



Image: A smartphone displaying images from the camera, illustrating remote access for viewing, downloading, and sharing content.



Image: Depicts three ways to play back recordings: directly through the mobile app, connecting the camera via USB Type-C cable to a laptop, or using an SD card reader.

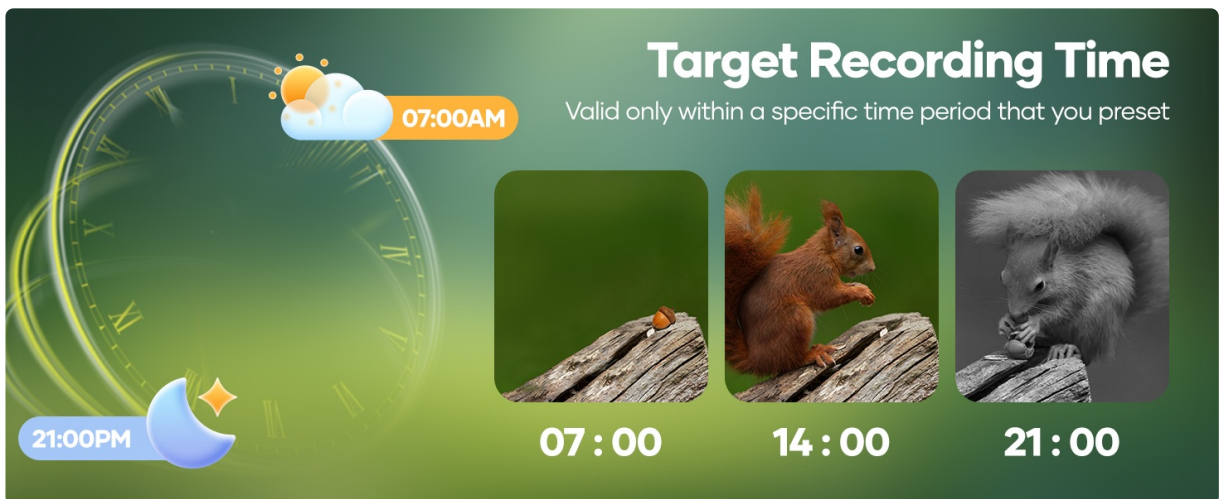


Image: Shows how to set custom detection areas within the app to prevent unwanted recordings from environmental factors.

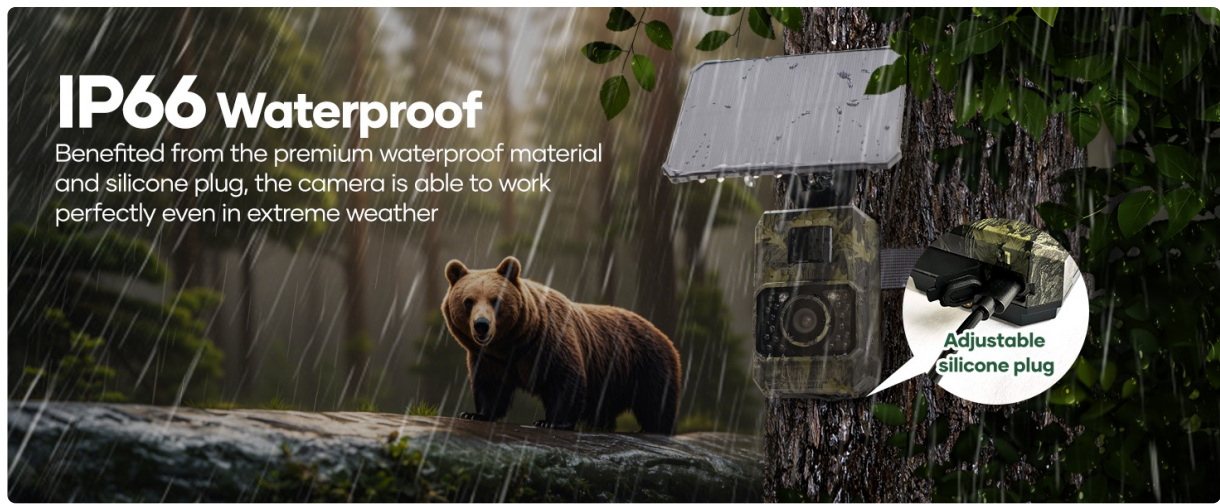


Image: Illustrates the target recording time feature, allowing users to specify active recording periods.

5.5 Official Product Video

Video: This video provides a detailed guide on how to use the Assark trail camera, covering various operational aspects and features.

6. MAINTENANCE

To ensure the longevity and optimal performance of your Assark Solar Trail Camera, follow these maintenance guidelines:

- **Cleaning:** Regularly wipe the camera lens and solar panel with a soft, dry cloth to remove dust, dirt, or water spots. Avoid abrasive cleaners.
- **Battery Check:** While the solar panel provides continuous charging, periodically check the battery level via the app, especially during prolonged periods of low sunlight.
- **Waterproof Seals:** Ensure all port covers and the main casing seal are properly closed and free of debris to maintain the IP66 waterproof rating.
- **Storage:** If storing the camera for an extended period, fully charge the battery and store it in a cool, dry place.

7. TROUBLESHOOTING

If you encounter issues with your camera, please refer to the following common solutions:

Problem	Possible Solution
Camera not powering on	Ensure the battery is charged. Check Type-C cable connection if charging. Verify the power switch is in the 'ON' position.
Cannot connect to app	Ensure camera is 'ON'. Verify phone's WiFi and Bluetooth are enabled and not connected to other networks. Stay within 45ft range. Restart camera and app.
Poor image/video quality	Clean the camera lens. Ensure sufficient lighting (for day) or proper night vision activation (for night). Check camera settings in the app for resolution.
Camera not triggering	Adjust PIR sensor sensitivity in app settings. Ensure no obstructions in front of the sensor. Check battery level.
SD card error	Ensure SD card is properly inserted. Format the SD card via the app or on a computer (this will erase all data). Try a different compatible SD card.

For further assistance, please contact Assark customer support through the "TrialCam Go" app or refer to the support section below.

8. SPECIFICATIONS

Feature	Detail
Model Name	PH960W
Image Resolution	48MP
Video Resolution	1080p @ 30fps
Trigger Speed	0.2 seconds
Night Vision Range	Up to 65 feet (20 meters)
Night Vision Type	850nm Low-Glow Infrared LEDs
Connectivity	Bluetooth, Wi-Fi (App Control)
Wi-Fi/Bluetooth Range	Approx. 45 feet
Power Source	Solar Powered, Built-in Rechargeable Lithium Battery, Type-C Charging
Waterproof Rating	IP66
Memory Card Support	Micro SD up to 256GB (32GB included)
Dimensions (L x W x H)	4.13 x 2.56 x 1.38 inches
Item Weight	14.9 ounces

9. WARRANTY & SUPPORT

Assark is committed to providing excellent after-sales service for your product.

9.1 Warranty Information

Your Assark Solar Trail Camera is covered by a **1-Year Protection / 1-Year Warranty Plan** from the date of purchase. This warranty covers manufacturing defects and ensures the product functions as intended under normal use. Please retain your proof of purchase for warranty claims.

9.2 Customer Support

For any questions, technical assistance, or warranty inquiries, please contact our customer support team.

We offer **24 Hours / 7 Days Professional Service**

- **Via Mobile App:** The "TrialCam Go" app includes a direct chat support feature. Navigate to "My Devices" and click the chat icon to inquire about your product.
- **Online:** Visit the official Assark brand store on Amazon for FAQs and contact information.



Hassle-Free

Return/Refund

1-Year Protection

1-Year Warranty Plan

24 Hours/7 Days

Professional Service

Image: Assark's commitment to providing excellent after-sales service.

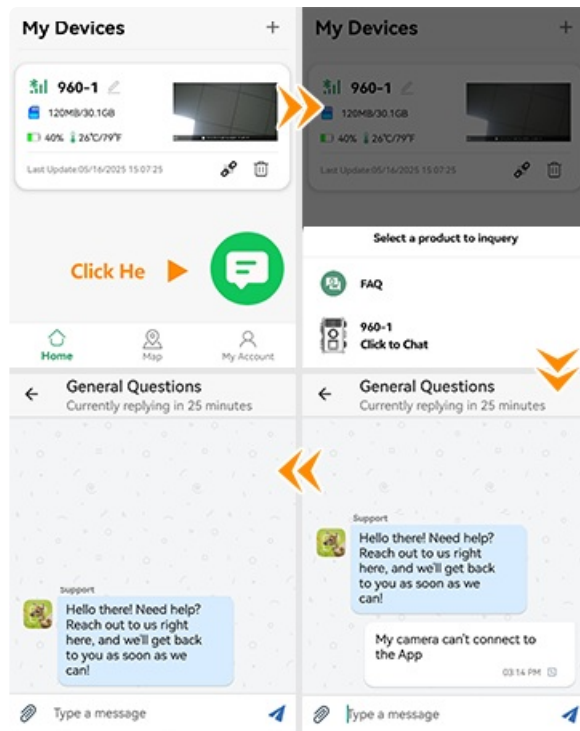


Image: How to access customer support directly through the "TrialCam Go" mobile application.