

[Manuals.plus](#) /

› [COLAMY](#) /

› COLAMY Upholstered Dining Chairs (Set of 2) Instruction Manual

## COLAMY Corduroy Dining Chairs

# COLAMY Upholstered Dining Chairs (Set of 2) Instruction Manual

**Model:** Corduroy Dining Chairs

**Brand:** COLAMY

## INTRODUCTION

---

This set of two side dining chairs is designed to provide comfortable and stylish seating for various spaces, including dining rooms, living rooms, and bedrooms. Featuring durable corduroy upholstery, a contoured seat, and solid wood legs, these chairs offer both aesthetic appeal and functional support. This manual provides essential information for assembly, proper use, and maintenance to ensure the longevity and enjoyment of your chairs.

# PRODUCT DIMENSIONS

Max Weight Capacity: 250 LBS



Image: Front view of the COLAMY Upholstered Dining Chair, highlighting its design and beige corduroy fabric.

## PRODUCT FEATURES

- **Versatile Design:** These chairs are suitable for various settings, including dining rooms, living rooms, bedrooms, accent seating, reception areas, waiting rooms, and makeup vanities.
- **Modern Aesthetic:** Features corduroy fabric with vertical stripes, offering a mid-century modern appeal. The mid-rise back design contributes to a simple and streamlined look.
- **Built for Comfort:** Equipped with a removable, foam-padded seat and soft corduroy fabric for enhanced comfort. The contoured seat and low-rise back provide additional support.
- **Durable Construction:** Crafted with a solid and engineered wood frame for sturdiness. Natural rubber wood legs, finished in classic black, ensure longevity and stability.
- **Weight Capacity:** Each chair supports up to 250 lbs.
- **Floor Protection:** Plastic caps are integrated into the legs to prevent scratches on floors.
- **Easy Assembly & Movement:** Designed for minor assembly and are lightweight for convenient transport and repositioning.



*Accent Chairs*



*Reception Chairs*



*Waiting Room Chairs*



*Makeup Chairs*

Image: Detail of the chair's ergonomic backrest, thick sponge seat cushion (4.72 inches), and corduroy fabric texture.



Image: Illustration of the removable cushion feature and the durable rubber wood legs, emphasizing their load-bearing capacity.



Image: Key construction elements including the sturdy rubber wood frame, high-density comfort sponge, and anti-slip protectors for floor safety.

## ASSEMBLY INSTRUCTIONS

The COLAMY Upholstered Dining Chairs require minor assembly. All necessary hardware and tools are included in the package.

- 1. Unpack Components:** Carefully remove all chair components from the packaging. Verify that all parts listed in the included hardware pack and user manual are present.
- 2. Locate Legs:** The chair legs are typically stored in a zippered compartment located underneath the seat cushion.
- 3. Attach Legs:** Securely attach the legs to the designated points on the chair body. Ensure correct orientation for each leg (front and back legs may differ). If a wobble occurs after initial attachment, re-check leg placement and re-attach if necessary.
- 4. Tighten Fasteners:** Use the provided tools to tighten all screws and fasteners. Avoid overtightening to prevent damage to the wood.
- 5. Place Cushion:** Position the removable seat cushion onto the chair frame.
- 6. Adjust for Stability:** Adjust the plastic caps on the bottom of the legs to ensure the chair is level and stable on your floor surface.



## MODERN DINING CHAIRS



*Sturdy Rubber Wood Frame*



*High Density Comfort sponge*



*Anti-Slip Protector*

Image: Detailed product dimensions, including height, width, depth, and seat measurements, along with the 250 lbs maximum weight capacity.

### OPERATING INSTRUCTIONS

These chairs are designed for indoor use as seating in dining rooms, living rooms, bedrooms, offices, or reception areas. Proper use ensures safety and extends product life.

- **Stable Placement:** Always ensure the chair is placed on a flat, stable surface before sitting.
- **Weight Limit:** Do not exceed the maximum weight capacity of 250 lbs.
- **Intended Use:** Avoid standing on the chair or using it as a step stool. It is intended for seating purposes only.
- **Comfort:** Utilize the contoured seat and mid-rise backrest for optimal comfort and support during use.



Image: COLAMY dining chairs in a typical dining room setting, demonstrating their intended use and aesthetic integration.

## CARE AND MAINTENANCE

---

Regular care and maintenance will help preserve the appearance and extend the lifespan of your COLAMY dining chairs.

- **General Cleaning:** Wipe the chair frame and upholstery with a dry, soft cloth.
- **Avoid Harsh Cleaners:** Do not use strong liquid cleaners, abrasive chemicals, or polishes, as these can damage the fabric or wood finish.
- **Cushion Spot Cleaning:** The seat cushion is removable for easy spot cleaning. For specific cleaning instructions for corduroy upholstery, refer to general fabric care guidelines or consult a professional cleaner.
- **Fastener Check:** Periodically inspect all screws and fasteners for tightness. Re-tighten if necessary to maintain the chair's structural integrity and stability.
- **Floor Protector Inspection:** Check the plastic caps on the bottom of the legs regularly for wear and tear. Replace them if they become damaged to continue protecting your floors.



Image: The removable cushion feature, which facilitates easier cleaning and maintenance of the seat.

## TROUBLESHOOTING

---

This section addresses common issues you might encounter with your dining chairs.

### Chair Wobbles

If the chair wobbles after assembly or during use:

- **Check Fasteners:** Ensure that all leg attachments are securely tightened. Loose screws can cause instability.
- **Verify Leg Orientation:** Confirm that the legs are installed in their correct positions (front and back legs may have different angles or lengths).
- **Adjust Leg Caps:** Use the adjustable plastic caps on the bottom of the legs to level the chair on uneven floor surfaces.

### Upholstery Indentations

Over time, indentations may appear in the seat cushions with frequent use. This is considered normal wear for padded furniture. Rotating chairs or cushions (if possible) can help distribute wear evenly.

## PRODUCT SPECIFICATIONS

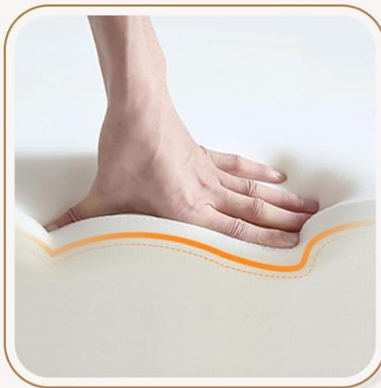
Feature	Detail
Brand	COLAMY
Model Name	dining room chairs
Model Number	Corduroy Dining Chairs
Color	Beige
Material (Cushion Fill)	Memory foam
Material (Frame)	Rubberwood
Product Dimensions (Overall)	25"D x 23.82"W x 33.07"H
Size	Set of 2
Recommended Uses	Dining, Gaming, Office, Reading, Relaxing
Room Type	Bedroom, Dining Room, Dressing Room, Kitchen, Living Room
Age Range Description	Adult
Included Components	Dining chairs body, hardware pack, user manual
Indoor Outdoor Usage	Indoor
Chair Backrest Width	19.88 Inches
Maximum Weight Recommendation	250 Pounds
Required Assembly	Yes
Back Style	Cushion Back
Leg Style	Tapered Leg
Furniture Finish	Wood
Pattern	Solid
Shape	Rectangular



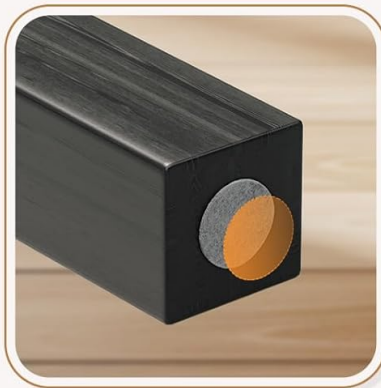
## MODERN DINING CHAIRS



*Sturdy Rubber Wood Frame*



*High Density Comfort sponge*



*Anti-Slip Protector*

Image: Detailed product dimensions, including height, width, depth, and seat measurements, for reference.

### WARRANTY AND SUPPORT

For any questions regarding assembly, missing parts, or product defects, please contact COLAMY customer support. Information regarding specific warranty terms may be included with your product packaging or available on the manufacturer's official website. Please retain your purchase receipt for warranty claims.