

d5443bdc-81fa-41ee-a2aa-fe45a5b7f2ab

User Manual: Car Stereo Radio for Isuzu D-max 2020

Model: d5443bdc-81fa-41ee-a2aa-fe45a5b7f2ab

INTRODUCTION

This manual provides comprehensive instructions for the installation, operation, and maintenance of your new Car Stereo Radio designed specifically for the Isuzu D-max 2020 model. Please read this manual thoroughly before using the product to ensure proper functionality and safety.

SAFETY INFORMATION

- Ensure the vehicle is turned off and the battery is disconnected before beginning installation.
- Consult a professional for installation if you are unsure about any steps.
- Do not operate the device in a manner that distracts you from driving.
- Avoid exposing the unit to extreme temperatures, moisture, or direct sunlight for prolonged periods.
- Use only specified accessories and parts.

PRODUCT OVERVIEW

The Car Stereo Radio features an 8-Core CPU, 4GB RAM, and 64GB ROM, providing enhanced performance and storage. It comes with a 13.1-inch large display for intuitive control and includes built-in CarPlay and Android Auto functionality.

M400S(9863)

For ISUZU DMAX 2020

Android

4+64GB

8-Core

1280*720·IPS

AV Output

DSP+RDS

Carplay+Auto



Image: Overview of the car stereo radio highlighting its main features such as Android OS, 4GB RAM, 64GB ROM, 8-Core processor, 1280x720 IPS display, AV Output, DSP+RDS, and Carplay+Auto compatibility.

Included Accessories

The package includes the car stereo radio unit and various cables and connectors necessary for installation.

Accessories

(M200S M300S M400S M500S M600S M700S)

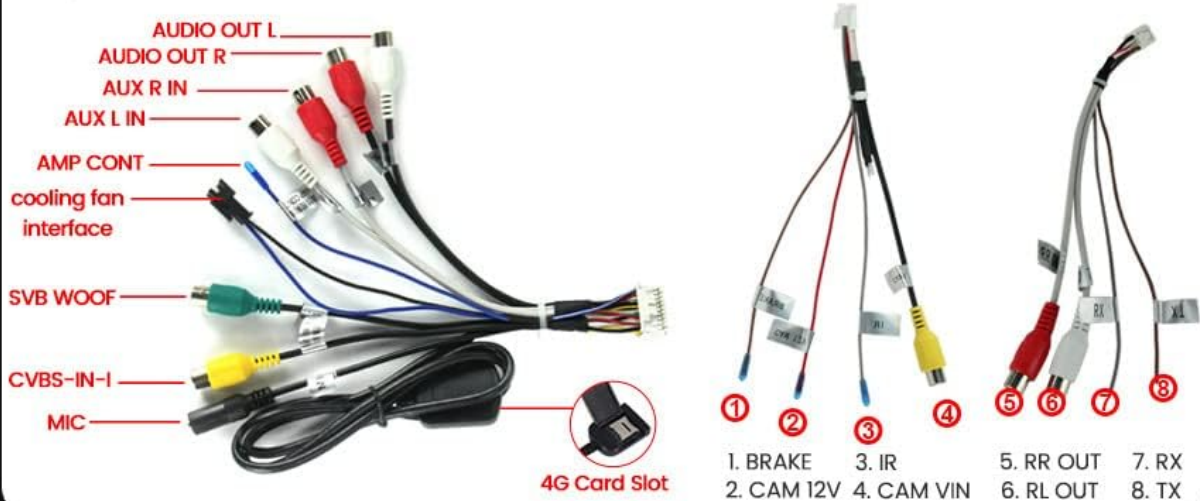


Image: A collection of accessories including RCA cables, audio output cables, reversing camera cable, microphone, GPS antenna, 4G antenna, and various wiring harnesses for different models (M200S, M300S, M400S, M500S, M600S, M700S).

- Car Stereo Radio Unit
- RCA Cable
- Audio Out Cable
- Reversing Camera Cable
- Microphone
- GPS Antenna
- 4G Antenna
- USB Cables (2x)
- Wiring Harnesses (model specific)

SETUP AND INSTALLATION

Follow these steps for proper installation of the car stereo radio in your Isuzu D-max 2020.

1. Wiring Connections

Identify the correct ports on the back of the host device and connect the corresponding cables. Refer to the wiring diagram for detailed connections.

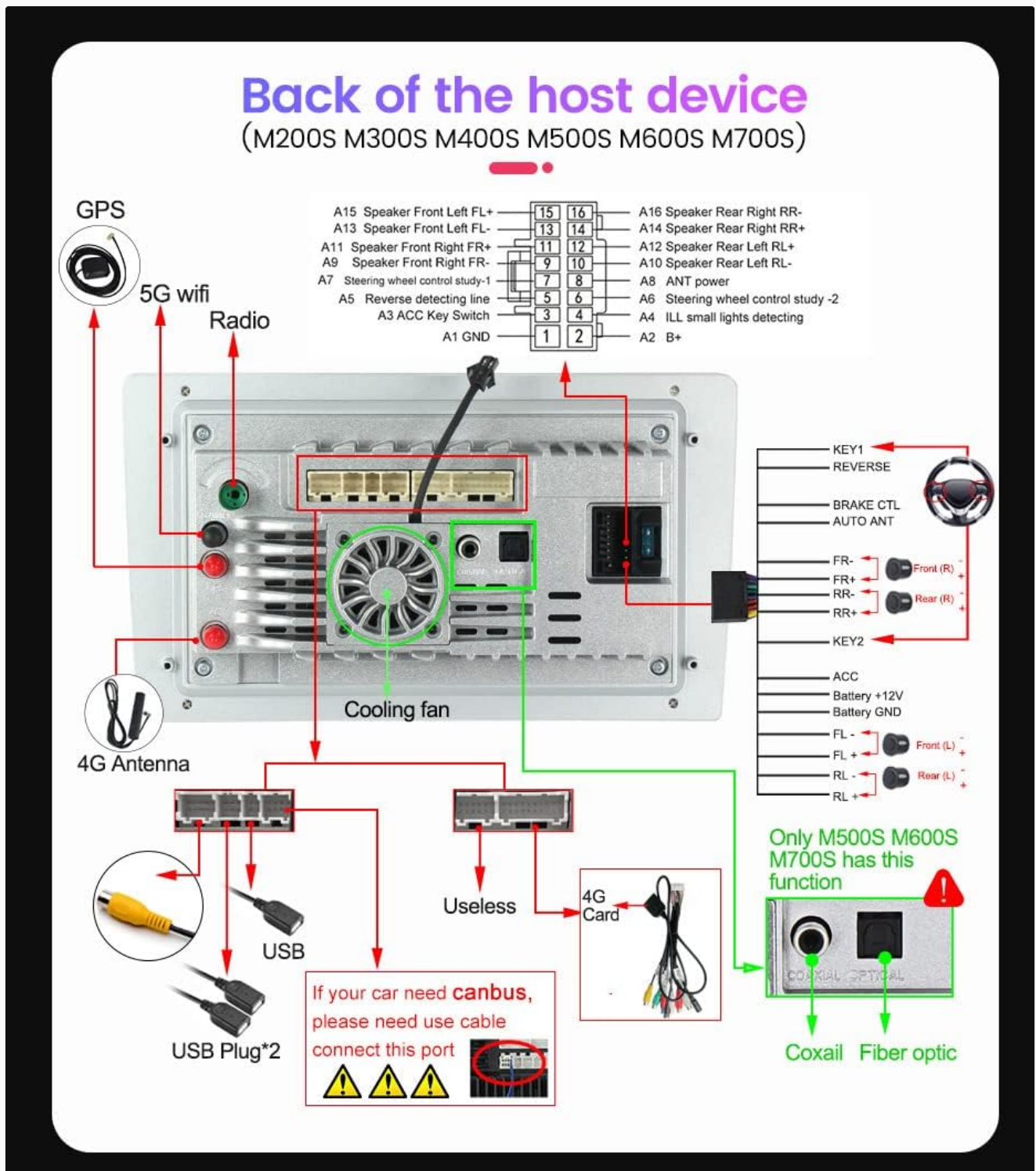


Image: Detailed diagram of the rear panel of the car stereo, illustrating connection points for GPS, 5G WiFi, Radio, 4G Antenna, USB ports, and various audio/video inputs and outputs. It also shows the cooling fan and main power harness connections.

Key Connections:

- **GPS:** Connect the GPS antenna.
- **Radio:** Connect the vehicle's radio antenna.
- **4G Antenna:** Connect the provided 4G antenna for network connectivity.
- **USB:** Connect USB devices via the USB ports.

- **Power Harness:** Connect the main power harness to the vehicle's wiring. Ensure correct connections for ACC, Battery +12V, Battery GND, and speaker outputs (FL, FR, RL, RR).
- **Cooling Fan:** Ensure the cooling fan is properly connected.
- **CANBUS:** If your car requires a CANBUS decoder, ensure it is connected correctly.

2. Physical Installation

Carefully integrate the stereo unit into the dashboard of your Isuzu D-max 2020. Ensure all cables are securely connected and routed to avoid interference.



Image: The car stereo unit seamlessly integrated into the center console of an Isuzu D-max 2020, demonstrating its fit and appearance after installation.

3. Initial Setup and Software Installation

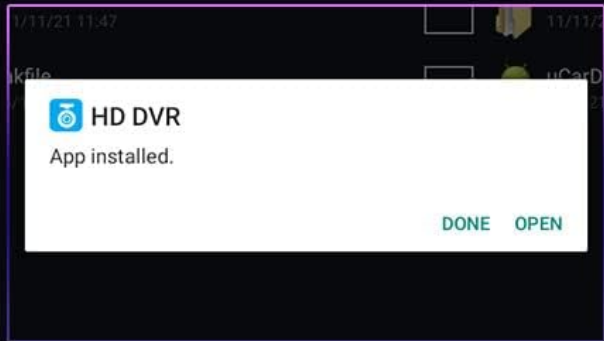
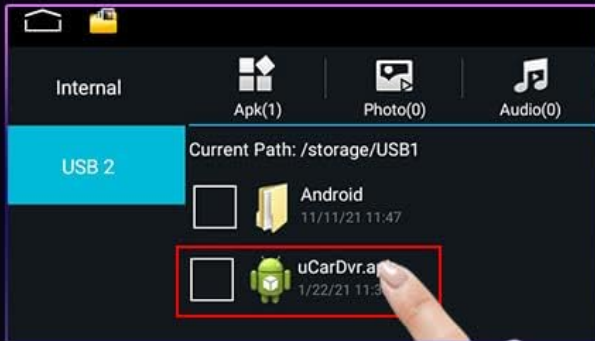
After physical installation, power on the unit and proceed with initial software setup, such as installing the DVR application if applicable.

Installation steps

1. Connection via USB Cable



2. FileManager



3. Install software

4. DVR installed successfully

Image: A four-panel guide showing the steps for connecting a USB device, navigating to the File Manager, installing an application (e.g., uCarDvr.apk) from the USB drive, and confirming successful installation of the DVR software.

1. **Connection via USB Cable:** Connect your USB device (e.g., USB drive with software) to the unit's USB port.
2. **File Manager:** On the unit's screen, navigate to the "FileManager" application.
3. **Install Software:** Browse to the location of the software file (e.g., uCarDvr.apk) on your USB device and tap to install.
4. **Confirmation:** Once installed, a confirmation message will appear.

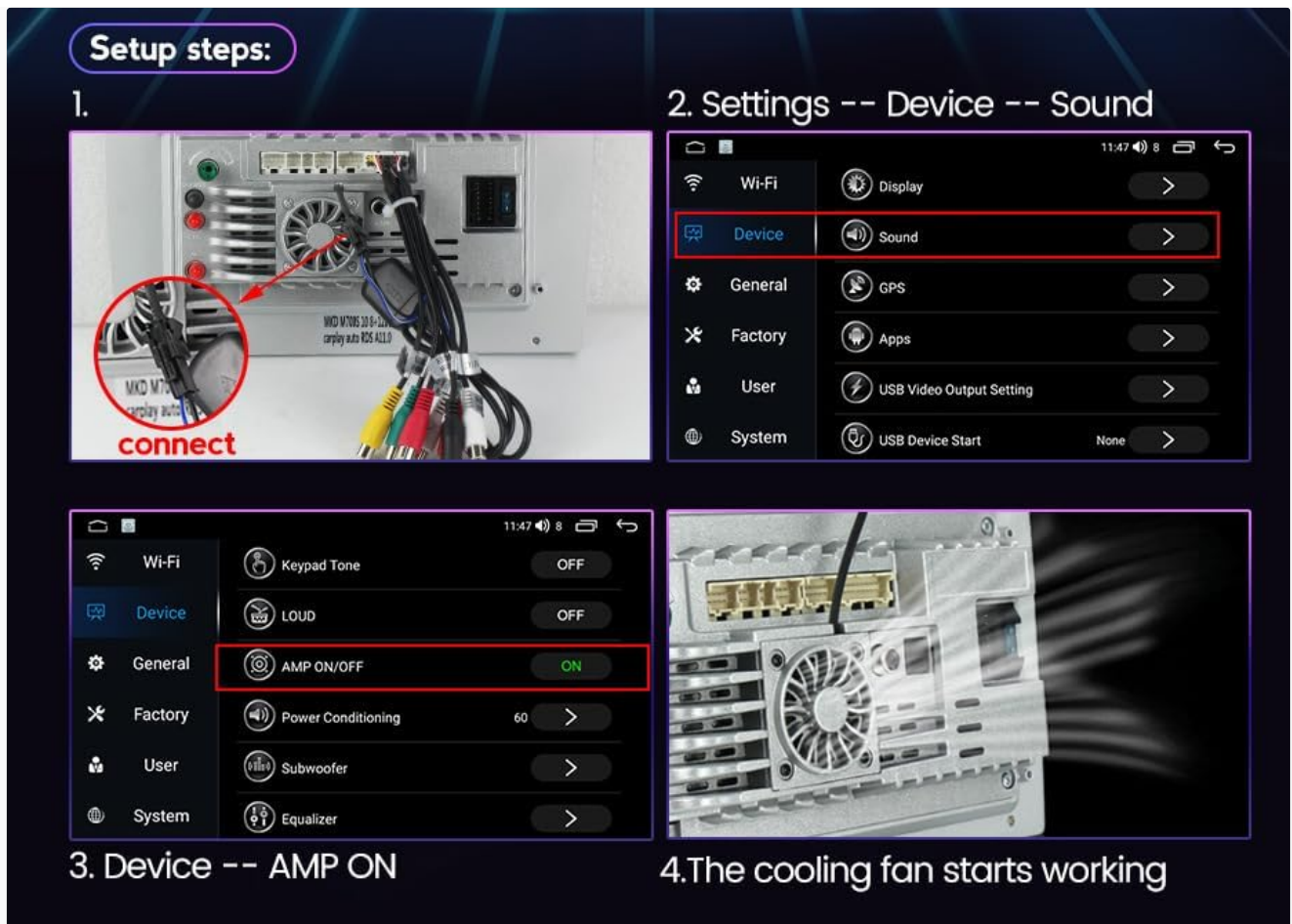


Image: A four-panel guide illustrating setup steps: 1. Connecting cables to the device. 2. Navigating to Settings > Device > Sound. 3. Activating the AMP (Amplifier) by setting "AMP ON/OFF" to ON. 4. Confirmation that the cooling fan starts working after AMP activation.

1. **Connect:** Ensure all necessary cables are connected to the device.
2. **Settings Navigation:** Go to **Settings > Device > Sound**.
3. **Activate AMP:** Within the Sound settings, locate and set **AMP ON/OFF** to **ON**.
4. **Cooling Fan:** The cooling fan will activate, indicating proper amplifier function.

OPERATING INSTRUCTIONS

This section covers the basic operation of your car stereo radio, including navigation, media playback, and smartphone integration.

User Interface



Image: The car stereo display showing the Apple CarPlay interface with icons for Phone, Music, Maps, Messages, Now Playing, Settings, Podcasts, and Audiobooks, indicating smartphone integration capabilities.

The large 13.1-inch touchscreen provides an intuitive interface for accessing various functions. Navigate through applications by tapping their icons.

CarPlay and Android Auto

The unit supports both wireless CarPlay (for iOS devices) and wired Android Auto (for Android devices), allowing seamless integration of your smartphone's features.

Built-in CarPlay + Auto

(M200S M300S M400S M500S M600S M700S)

car dvd player comes with carplay function, no need to purchase additional accessories.



 **Wireless CarPlay(ios system)**

Connection steps:

1. Connect **BT** 
2. Click on "Car Link"  and wait for connection
(CarPlay can also be connected via USB Cable)



 **Wired Auto(Android system)**

Connection steps:

1. Connect the mobile phone and car dvd player with **USB cable**
2. Click on "Car Link"  and wait for connection

Image: A multi-panel image demonstrating how to connect Wireless CarPlay (iOS system) via Bluetooth and then selecting "Car Link," and how to connect Wired Android Auto (Android system) by connecting the mobile phone via USB cable and then selecting "Car Link."

Wireless CarPlay (iOS System)

1. **Connect BT:** On your iPhone, go to Bluetooth settings and pair with the car stereo unit.
2. **Select Car Link:** On the car stereo, tap the "Car Link" icon and wait for the connection to establish.

Wired Android Auto (Android System)

1. **Connect USB:** Connect your Android phone to the car stereo using a USB cable.
2. **Select Car Link:** On the car stereo, tap the "Car Link" icon and wait for the connection to establish.

MAINTENANCE

To ensure the longevity and optimal performance of your car stereo radio, follow these maintenance guidelines:

- **Cleaning:** Use a soft, dry cloth to clean the screen and exterior. For stubborn smudges, slightly dampen the cloth with water or a screen cleaner. Avoid abrasive cleaners or solvents.
- **Temperature:** Do not expose the unit to extreme temperatures. While designed for automotive use, prolonged exposure to direct sunlight in a parked car can cause damage.
- **Ventilation:** Ensure the cooling fan area is not obstructed to allow proper airflow and prevent overheating.
- **Software Updates:** Periodically check for and install software updates to improve performance and add new features. Refer to the manufacturer's website or the unit's system settings for update procedures.

TROUBLESHOOTING

If you encounter issues with your car stereo radio, refer to the following common problems and solutions:

Problem	Possible Cause	Solution
No Power	Loose power connection, blown fuse, vehicle battery issue.	Check power harness connections. Inspect vehicle fuses. Ensure vehicle battery is charged.
No Sound	Speaker wires disconnected, volume too low, AMP not activated.	Verify speaker wire connections. Increase volume. Check if AMP is ON in settings (refer to Setup section).
CarPlay/Android Auto Not Connecting	Incorrect connection method, phone settings, incompatible cable.	For Wireless CarPlay, ensure Bluetooth is on and paired. For Wired Android Auto, use a high-quality USB cable. Check phone settings for projection mode. Restart both phone and stereo.
GPS Signal Weak/Lost	GPS antenna not properly installed or obstructed.	Ensure GPS antenna is securely connected and placed in an area with clear sky view.
Touchscreen Unresponsive	Temporary software glitch, extreme temperature.	Restart the unit. Allow unit to return to normal operating temperature.

If the problem persists after trying these solutions, please contact customer support.

SPECIFICATIONS

Feature	Detail
Model Number	d5443bdc-81fa-41ee-a2aa-fe45a5b7f2ab
CPU	8 Core
RAM	4GB
ROM	64GB
Screen Size	13.1-inch
Display Resolution	1280*720 IPS
Connectivity Technology	Bluetooth, Wi-Fi, USB
Special Features	Bluetooth, Built-in CarPlay, Built-in Android Auto, DSP+RDS
Audio Output Mode	Stereo
Surround Sound Channel Configuration	2.0
Video Encoding	H.264, H.265/HEVC
Compatible Devices	Television
Connector Type	USB Type A
Total HDMI Ports	1
Manufacturer	Generic
Country of Origin	China

WARRANTY AND SUPPORT

For warranty information and technical support, please refer to the documentation provided with your purchase or contact the seller directly. Keep your proof of purchase for any warranty claims.

Seller: Custom DDT Car Lights

Return Policy: 30-day refund/replacement policy from the date of purchase.