

## UNIONE UC-600E

# UNIONE UC-600E Scientific Calculator User Manual

Model: UC-600E

## 1. INTRODUCTION

The UNIONE UC-600E is a versatile scientific calculator designed for students and professionals. It features 417 functions, making it suitable for a wide range of mathematical tasks, including algebra, calculus, statistics, and more. This manual provides detailed instructions on how to set up, operate, and maintain your calculator to ensure optimal performance.

## 2. KEY FEATURES

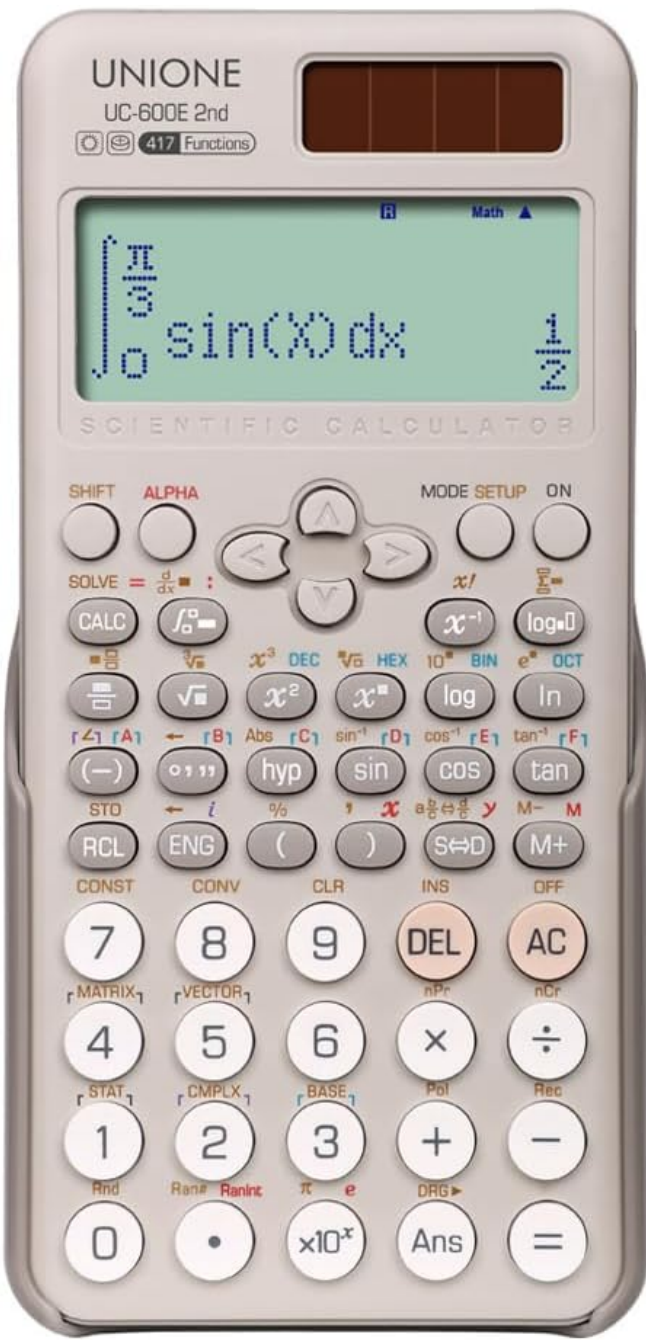
The UC-600E calculator is equipped with advanced functionalities to support complex calculations:

- **417 Functions:** Comprehensive set of mathematical, statistical, and scientific functions.
- **Natural Textbook Display:** Input and display fractions, roots, and other expressions as they appear in textbooks.
- **DOT Matrix Display:** Clear and easy-to-read 6.5-inch display.
- **Equation Solver:** Solve various types of equations.
- **9 Variable Memories:** Store and recall up to nine variables.
- **Trigonometric and Inverse Trigonometric Functions:** Sine, Cosine, Tangent, and their inverses.
- **Hyperbolic and Inverse Hyperbolic Functions:** Sinh, Cosh, Tanh, and their inverses.
- **Exponential/Logarithmic Functions:** Logarithms (base 10, natural) and exponential functions.
- **Power Functions:** Square, cube, and custom power calculations.
- **Fraction Calculations:** Perform operations with fractions.
- **Sexagesimal Functions:** Calculations involving degrees, minutes, and seconds.
- **Base-n Calculations:** Binary, Octal, Decimal, and Hexadecimal conversions and calculations.
- **Scientific Constants:** Access to 40 common scientific constants.
- **Metric Conversions:** 40 built-in metric conversion pairs.
- **Calculation with  $\sqrt{\phantom{x}}$ / $\pi$  Symbol:** Including simplifying radicals.

- **Simultaneous and Polynomial Equations:** Solve systems of linear equations and polynomial equations.
- **Table Function:** Generate numerical tables from functions.
- **Matrix / Vector Calculations:** Perform operations on matrices and vectors.
- **Complex Number Calculations:** Work with complex numbers.
- **Coordinate Conversion:** Convert between rectangular and polar coordinates.
- **Permutation and Combination:** Calculate permutations and combinations.
- **Statistical Calculations:** Standard deviation and regression analysis.

#### Physical Characteristics:

- **Dimensions:** Approximately 6.4 inches (164mm) x 3.1 inches (80mm) x 0.47 inches (17mm).
- **Key Type:** Durable plastic keys.
- **Protection:** Includes a hard case for protection.



- ✓ Equation Solver
- ✓ 9 Variable Memories
- ✓ Trigonometric and Inverse Trigonometric Functions
- ✓ Hyperbolic and Inverse Hyperbolic Functions
- ✓ Exponential/Logarithmic
- ✓ Power Functions
- ✓ Fraction Calculations
- ✓ Sexagesimal Functions
- ✓ Base-*n* Calculations
- ✓ 40 Scientific Constants
- ✓ 40 Metric Conversions
- ✓ Calculation with  $\sqrt{\phantom{x}}$ / $\pi$  symbol including simplifying radicals
- ✓ Simultaneous Equations
- ✓ Polynomial Equations
- ✓ Table Function
- ✓ Matrix / Vector Calculations
- ✓ Complex Number Calculations
- ✓ Coordinate Conversion
- ✓ Permutation and Combination
- ✓ Statistical Calculations (Standard Deviation)
- ✓ Statistical Calculations (Regression Analysis)

Image: The UNIONE UC-600E calculator screen showing a comprehensive list of its 417 functions, highlighting its capabilities for various mathematical and scientific computations.

### 3. SETUP

#### 3.1 Power Source

The UNIONE UC-600E calculator operates on both solar power and a single LR44 battery (included). For optimal performance, ensure the battery is correctly installed.

##### Battery Installation:

1. Locate the battery compartment on the back of the calculator.
2. Carefully open the compartment cover.
3. Insert one LR44 battery, ensuring the correct polarity (+/-).
4. Close the battery compartment cover securely.

#### 3.2 Initial Power On

Press the **ON** button to turn on the calculator. If the display does not appear, check the battery installation or ensure sufficient light for solar operation.

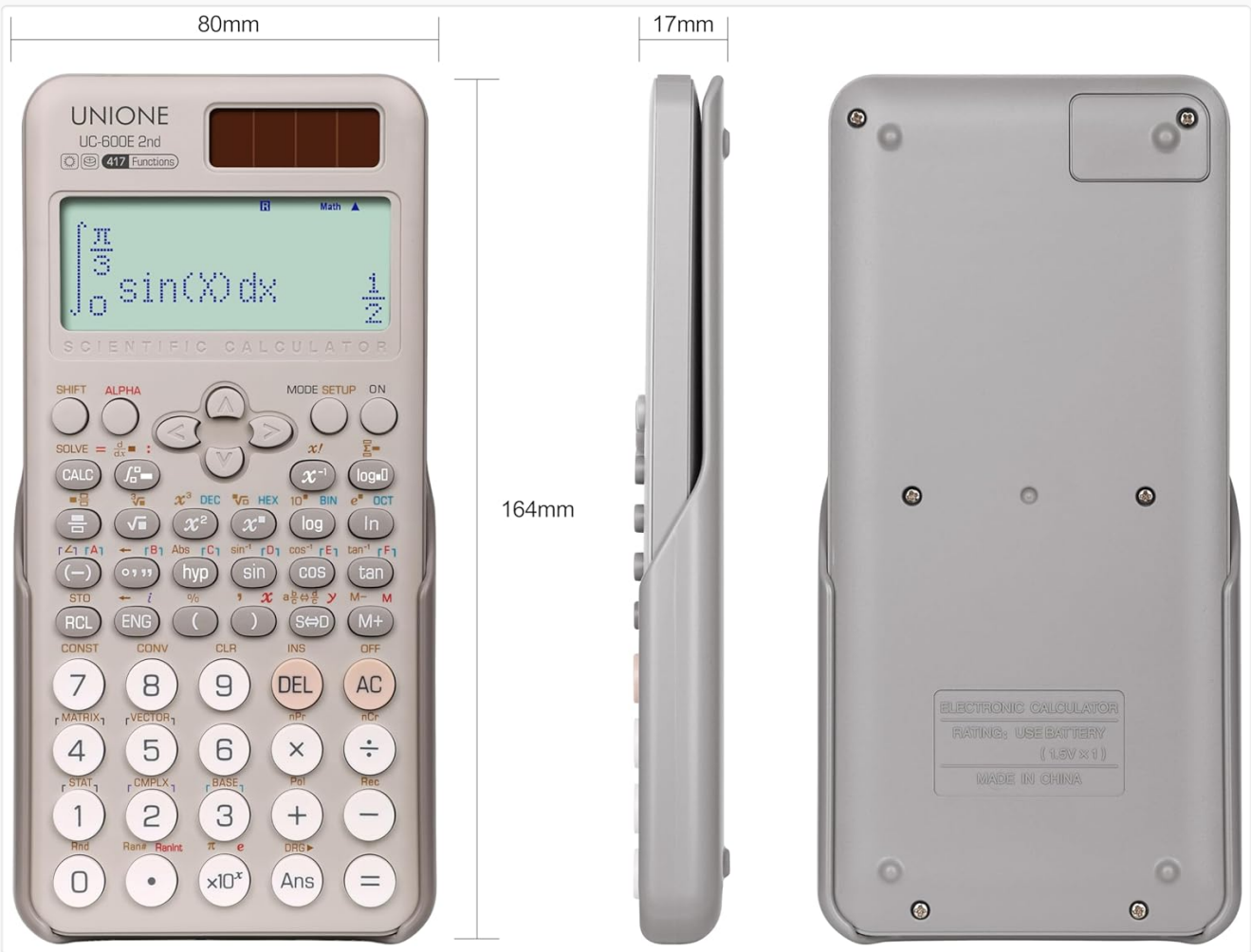


Image: The back and side views of the UNIONE UC-600E calculator, illustrating its physical dimensions (164mm length, 80mm width, 17mm thickness) and the location of the battery compartment.

### 4. OPERATING INSTRUCTIONS

#### 4.1 Basic Calculations

Enter numbers and operations as you would on a standard calculator. Press **=** to get the result.

#### 4.2 Natural Textbook Display

The Natural Textbook Display allows you to input and view mathematical expressions, such as fractions, roots, and integrals, exactly as they are written in textbooks. This simplifies complex entries and improves readability.

### 4.3 Mode Selection

Press the **MODE SETUP** button to access different calculation modes. The main modes include:

- **COMP (Compute):** For general arithmetic and function calculations.
- **CMPLX (Complex):** For complex number calculations.
- **STAT (Statistics):** For statistical calculations like standard deviation and regression.
- **BASE-N:** For binary, octal, decimal, and hexadecimal calculations.
- **EQN (Equation):** For solving simultaneous and polynomial equations.
- **MATRIX:** For matrix calculations.
- **TABLE:** For generating numerical tables from functions.
- **VECTOR:** For vector calculations.

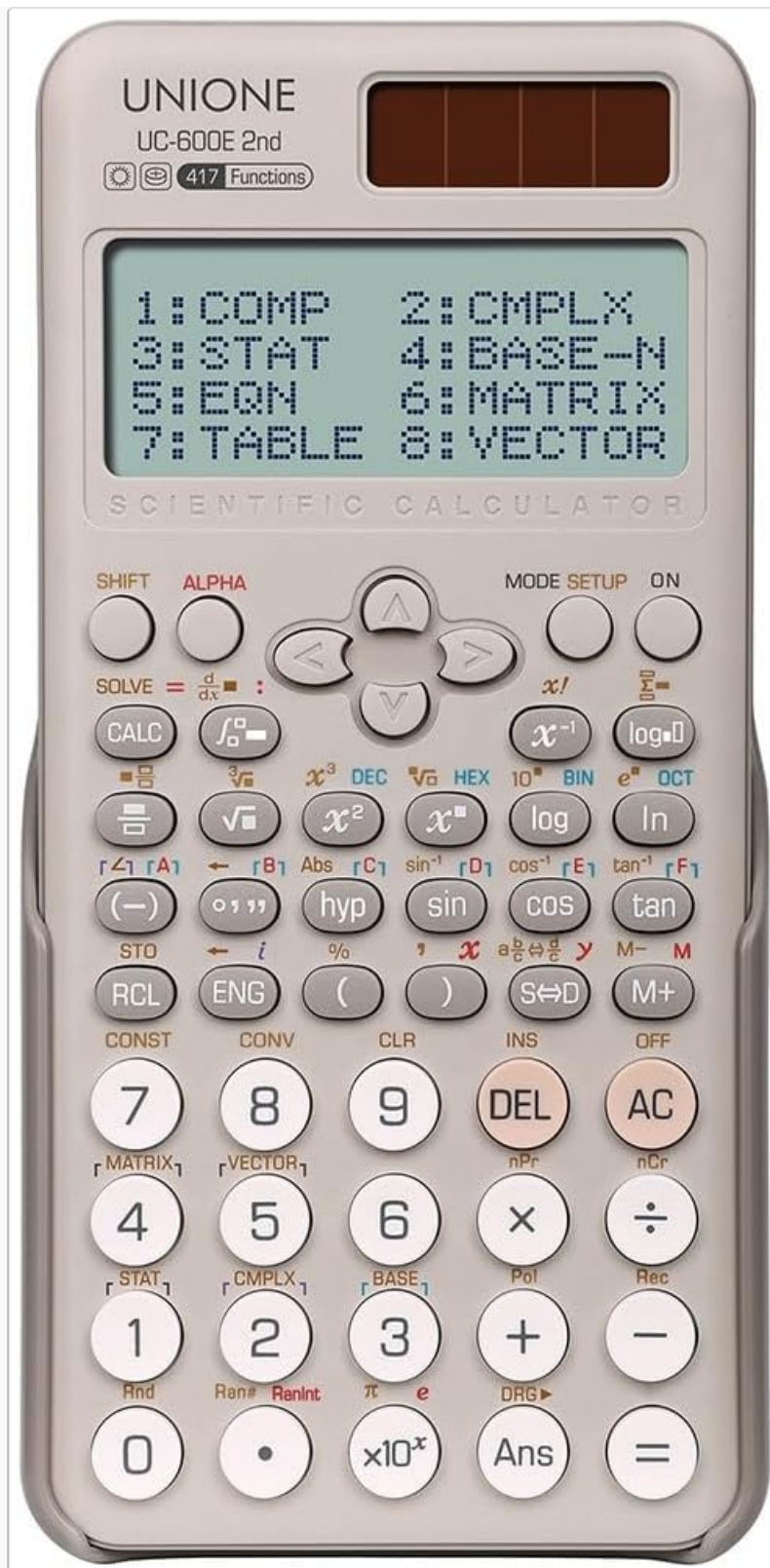


Image: The UNIONE UC-600E calculator's main display, illustrating the selection menu for different operational modes such as Compute, Complex, Statistics, and Base-N.

#### 4.4 Toggling Calculation Results

When Natural Display is active, pressing the **S $\leftrightarrow$ D** button allows you to toggle the displayed calculation result between different forms:

- Fraction form and decimal form.
- Square root ( $\sqrt{\phantom{x}}$ ) form and decimal form.
- Pi ( $\pi$ ) form and decimal form.





## Toggling Calculation Results

While Natural Display is selected, each press of **S⇌D** will toggle the currently displayed calculation result between its fraction form and decimal form, its  $\sqrt{\quad}$  form and decimal form, or its  $\pi$  form and decimal form.

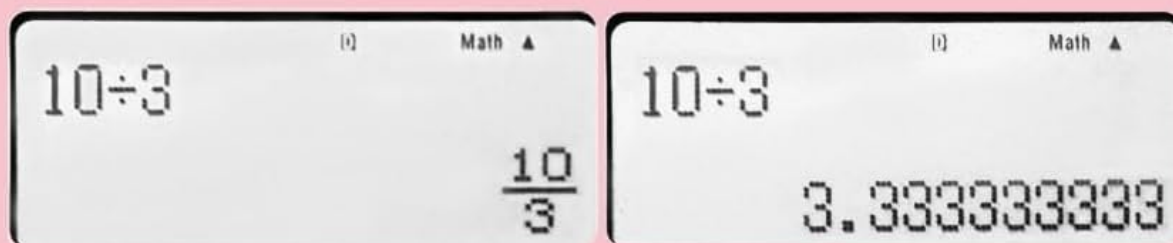


Image: An example of the calculator's display toggling feature, showing the result of  $10 \div 3$  first as a fraction ( $10/3$ ) and then as its decimal equivalent (3.33333333).

### 4.5 Advanced Functions

Refer to the detailed function list in Section 2. To access secondary functions printed above the keys, press the **SHIFT** key followed by the desired function key. For alpha functions, press the **ALPHA** key.

## 5. MAINTENANCE

### 5.1 Cleaning

To clean the calculator, wipe it gently with a soft, dry cloth. Do not use abrasive cleaners, solvents, or wet cloths, as these can damage the surface or internal components.

### 5.2 Battery Replacement

When the display becomes dim or unresponsive, it may be time to replace the LR44 battery. Follow the battery installation steps outlined in Section 3.1.

### 5.3 Storage

Store the calculator in its hard case when not in use to protect it from dust, scratches, and impacts. Avoid exposing the calculator to extreme temperatures or direct sunlight for prolonged periods.

## 6. TROUBLESHOOTING

- **Calculator does not turn on:** Check battery installation and ensure sufficient light for solar panel. Replace battery if necessary.
- **Display is dim:** Adjust display contrast (refer to specific instructions in the full manual if available, typically via MODE SETUP or SHIFT + MODE). Ensure adequate lighting for solar power.
- **Settings are lost after turning off:** Some settings, such as contrast or variable values, may reset upon power off. This is a characteristic of some calculator models. Re-enter settings as needed.
- **Incorrect calculation results:** Verify the selected mode (e.g., COMP, STAT), angle unit (DEG, RAD, GRA), and input values. Perform a reset if persistent issues occur (consult full manual for reset procedure, often involves pressing specific key combinations while turning on).

7. SPECIFICATIONS

Model	UC-600E
Brand	UNIONE
Functions	417
Display Type	DOT Matrix LCD, Natural Textbook Display
Display Size	6.5 inches (diagonal)
Dimensions (L x W x H)	164mm x 80mm x 17mm (approx. 6.4in x 3.1in x 0.47in)
Material	Plastic (body and keys)
Power Source	Solar Powered & 1 x LR44 Battery (included)
Color	Gray

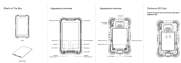
8. WARRANTY AND SUPPORT






For information regarding product warranty, returns, or technical support, please refer to the documentation provided at the time of purchase or contact your retailer. Specific warranty terms and support channels may vary by region and seller.



© 2024 UNIONE. All rights reserved.

Related Documents - UC-600E

	<p><a href="#">Rugged Android Tablet UA80 User Manual and Specifications</a></p> <p>Comprehensive user manual and technical specifications for the Shanghai UniOne Science &amp; Technology Rugged Android Tablet, Model UA80. Includes setup instructions, operating procedures, connectivity details, and regulatory compliance information.</p>
---	--

	<p><a href="#">Eltako Multifunction Time Relays and Timer Technical Specifications and Product Overview</a></p> <p>Comprehensive overview and technical specifications for Eltako MFZ series multifunction time relays, time relays, and timers, including models MFZ12DDX, MFZ12NP, MFZ12DX, MFZ61DX, MFZ12PMD-UC, A2Z12-UC, AVZ12DX-UC, EAW12DX-UC, PTN12-230V, RVZ12DX-UC, TGI12DX-UC, and S2U12DDX-UC. Features, functions, and technical data.</p>
	<p><a href="#">Crestron Flex Getting Started Guide</a></p> <p>A comprehensive guide to deploying, configuring, and managing Crestron Flex conference room solutions for Microsoft Teams Rooms and Zoom Rooms, including pre-deployment checklists, hardware information, and troubleshooting resources.</p>
	<p><a href="#">Lucci Airfusion Unione DC Ceiling Fan Installation and Operation Manual</a></p> <p>Comprehensive installation, operation, maintenance, and warranty guide for the Lucci Airfusion Unione DC Ceiling Fan. Learn how to safely install and use your energy-efficient ceiling fan.</p>
	<p><a href="#">Crestron Flex Unified Communications Solutions Product Manual</a></p> <p>This comprehensive product manual provides detailed information and instructions for setting up and using Crestron Flex Unified Communications Solutions. It covers various room designs, software configurations for Microsoft Teams Rooms and Zoom Rooms, and open-platform UC applications. The manual includes specifications, dimension drawings, installation guides, and troubleshooting tips for a range of Crestron Flex products.</p>
	<p><a href="#">AEOLUS PET TSAAS ICU: Advanced Veterinary Intensive Care Units Catalog</a></p> <p>Explore the AEOLUS PET TSAAS ICU series, featuring advanced veterinary intensive care units designed for optimal animal patient care. Discover features, models, and specifications for hospitals and clinics.</p>