

Technical Pro KTCP138

Technical Pro Home Theater System Kit Instruction Manual

Model: KTCP138

Brand: Technical Pro

INTRODUCTION

This manual provides comprehensive instructions for the setup, operation, maintenance, and troubleshooting of your Technical Pro Home Theater System Kit. This system is designed to deliver a superior audio experience with its 2000W Bluetooth amplifier, six 5.25" 175W in-wall/in-ceiling speakers, and included 16-gauge speaker wire. Please read this manual thoroughly before installation and use to ensure optimal performance and safety.



Figure 1: Overview of the Technical Pro Home Theater System Kit.

WHAT'S IN THE BOX

Verify that all items listed below are included in your package:

- Bluetooth Amplifier Receiver
- 6 x 5.25" 175W In-Wall/In-Ceiling Rim Speakers
- 250 ft. 16-Gauge Speaker Wire
- Remote Control
- Power Adapter
- Speaker Wire Connectors



Figure 2: Contents of the Home Theater System Kit.

KEY FEATURES

- **2000W Home Theater System:** Provides a powerful audio experience with a Bluetooth amplifier receiver and 175W in-ceiling speakers.
- **Versatile Connectivity:** Supports RCA, SD CARD, USB, AUX inputs, and features a built-in FM radio.
- **Bluetooth Connectivity:** Compatible with Bluetooth-enabled devices (smartphones, tablets, laptops) with a 30 ft wireless range for hassle-free pairing.
- **Easy Controls:** Amplifier features crisp buttons for audio sources, selectors, rotary knobs for equalization and master volume, and blue LED illuminated buttons for high visibility.
- **2-Way Mount Speakers:** 5.25-inch high-performance speakers designed for in-wall or in-ceiling flush mount installation with convenient speaker terminals.
- **Flush Mount Design:** Speakers offer a simple and easy installation, featuring a 1-inch high-temperature voice coil for rich sound.



Figure 3: Amplifier Features.



Figure 4: Speaker Specifications.

Figure 5: Speaker Wire Features.

SETUP INSTRUCTIONS

1. Speaker Installation

The 5.25-inch speakers are designed for flush mounting in walls or ceilings. Ensure you have the correct cutout diameter (6.5 inches) before proceeding.

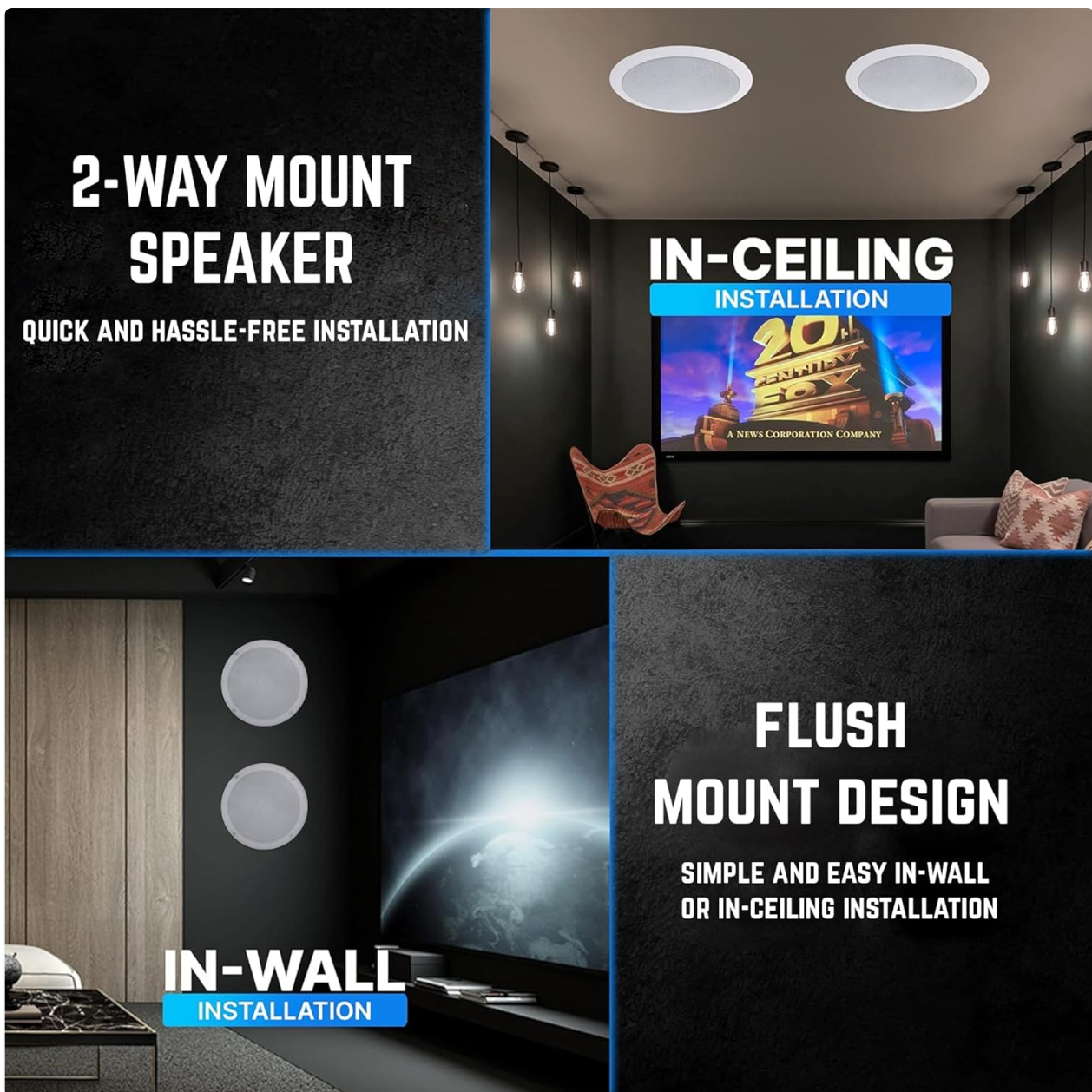


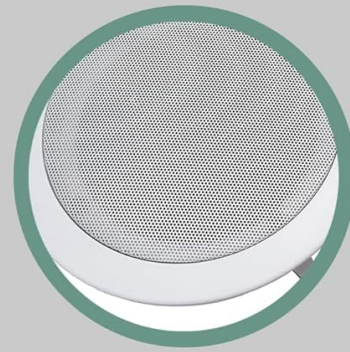
Figure 6: Easy speaker installation into a ceiling.

1. **Prepare the Opening:** Using the provided template (if any) or the speaker's cutout diameter, carefully cut a 6.5-inch hole in your desired wall or ceiling location.
2. **Connect Speaker Wire:** Connect the 16-gauge speaker wire to the convenient speaker terminals on the back of each speaker. Ensure correct polarity (red to positive, black to negative).
3. **Mount the Speaker:** Fold up the metal spring clips on the side of the speaker. Insert the speaker into the cutout hole. The clips will spring back and secure the speaker in place.



Simple Setup

Secures with Rotating Cam System, tightens to ceiling with just a screwdriver



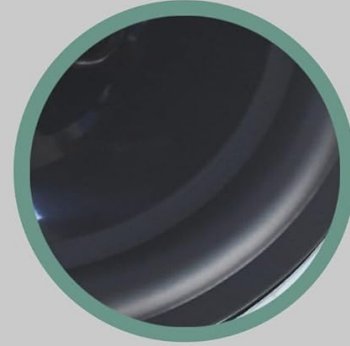
Paint to Match

Mimics the look of recessed lighting, paint to match and it virtually disappears



Aimable Tweeter

metalized soft dome tweeter in a ball-and-socket swivel mount



Moisture-Resistant

Rubber seal prevents moisture, use in bathroom, kitchens and covered porches

Figure 7: Speaker mounting options (in-wall/in-ceiling).

2. Amplifier and Wiring

Connect the speakers to the amplifier using the provided 16-gauge speaker wire. The amplifier supports multiple speakers and various input sources.



Figure 8: Amplifier Front and Rear Panels.

1. **Connect Speakers to Amplifier:** Use the 16-gauge speaker wire to connect the installed speakers to the amplifier's speaker output terminals. Ensure correct polarity.
2. **Power Connection:** Plug the amplifier's power adapter into a wall outlet and then into the amplifier's DC IN port.
3. **Input Sources:** Connect your desired audio sources (e.g., TV, CD player, smartphone) to the amplifier's RCA, AUX, USB, or SD CARD inputs.

3. Bluetooth Pairing

The amplifier features built-in Bluetooth for wireless audio streaming.

1. **Activate Bluetooth:** Turn on the amplifier and switch to Bluetooth mode using the mode button on the front panel. The Bluetooth indicator will blink.
2. **Pair Device:** On your smartphone or other Bluetooth-enabled device, search for available Bluetooth devices and select the amplifier (e.g., "Technical Pro Amplifier").
3. **Confirm Connection:** Once paired, the Bluetooth indicator on the amplifier will become solid, and you can begin streaming audio.

Setup Videos

Your browser does not support the video tag.

Video 1: Herdio Ceiling Speakers Bluetooth + 4 channel Amp(2 Pairs) - Demonstrates wiring and Bluetooth pairing for ceiling speakers and amplifier.

Your browser does not support the video tag.

Video 2: How to Set up Your CCL6T - Provides a detailed guide on installing and wiring ceiling speakers.

Your browser does not support the video tag.

Video 3: Bluetooth Home Audio Amplifier System - 6 Channel PTA62BT - Explains the features and setup of a Bluetooth home audio amplifier.

Your browser does not support the video tag.

Video 4: How to Set up Your RCS Series of Amplifiers - General setup guide for a commercial amplifier series, applicable to the included amplifier.

OPERATING INSTRUCTIONS

- **Power On/Off:** Use the power switch on the front panel to turn the amplifier on or off.
- **Volume Control:** Adjust the master volume knob to control the overall sound level. Individual input volumes may also be available.
- **Input Selection:** Use the input selector buttons (RCA, AUX, USB, SD CARD, FM, Bluetooth) to choose your desired audio source.
- **Equalization:** Use the bass and treble rotary knobs to adjust the audio's low and high frequencies to your preference.
- **FM Radio:** In FM mode, use the navigation buttons to scan for and select radio stations.
- **USB/SD Playback:** Insert a USB drive or SD card with audio files. The amplifier will automatically switch to USB/SD mode and begin playback. Use the control buttons (play/pause, next/previous track) for navigation.

MAINTENANCE

- **Cleaning:** Use a soft, dry cloth to clean the amplifier and speakers. Avoid using liquid cleaners or solvents, as they may damage the finish or internal components.
- **Ventilation:** Ensure the amplifier has adequate ventilation to prevent overheating. Do not block any ventilation openings.
- **Storage:** When not in use for extended periods, store the system in a cool, dry place away from direct sunlight and extreme temperatures.
- **Cable Management:** Periodically check all cable connections for any signs of wear or damage. Replace damaged cables immediately.

TROUBLESHOOTING

- **No Power:** Ensure the power cable is securely connected to both the amplifier and a working wall outlet. Check if the power switch is in the 'ON' position.
- **No Sound:** Verify that the master volume is turned up and not muted. Check all speaker wire connections for correct polarity and secure fit. Ensure the correct input source is selected.
- **Bluetooth Connection Issues:** Make sure the amplifier is in Bluetooth pairing mode (blinking indicator). Ensure your device's Bluetooth is enabled and within range (30 ft). Try unpairing and re-pairing the device.
- **Distorted Audio:** Lower the volume on both the amplifier and the audio source. Check for loose or damaged cables. Ensure speaker impedance matches amplifier requirements.
- **Remote Control Not Working:** Check and replace the remote control batteries. Ensure there are no obstructions between the remote and the amplifier's IR sensor.

SPECIFICATIONS

- **Amplifier Power:** 2000 Watts (Peak)
- **Speaker Power:** 175 Watts per speaker
- **Speaker Size:** 5.25 inches
- **Speaker Type:** 2-Way In-Wall/In-Ceiling
- **Speaker Wire Gauge:** 16 Gauge
- **Speaker Wire Length:** 250 ft.
- **Connectivity:** Bluetooth, RCA, SD CARD, USB, AUX, FM Radio
- **Package Dimensions:** 20 x 16 x 16 inches
- **Item Weight:** 32.8 pounds
- **Model Number:** KTCP138
- **Manufacturer:** Technical Pro

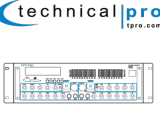





WARRANTY AND SUPPORT

Technical Pro products are designed and manufactured to the highest quality standards. In the unlikely event that you experience any problems with your product, please contact our customer support team for assistance.

Warranty Information: This product comes with a standard manufacturer's warranty. Please refer to the warranty card included in your package for specific terms and conditions.

Customer Support: For technical assistance, troubleshooting, or warranty claims, please visit the Technical Pro website or contact their customer service directly. Contact details can typically be found on the product packaging or the official Technical Pro website.

Related Documents - KTTTP138

 <p>Technical Pro Professional Karaoke Amplifier with USB & SD Card & Bluetooth Inputs User Manual for MM2000BT</p>	<p>Technical Pro MM2000BT Professional Karaoke Amplifier User Manual</p> <p>User manual for the Technical Pro MM2000BT Professional Karaoke Amplifier with USB & SD Card & Bluetooth Inputs. This guide covers front panel and rear panel connections, operation, and troubleshooting.</p>
 <p>Technical Pro HYBRID AMPLIFIER</p>	<p>Technical Pro Hybrid Amplifier Operating Manual</p> <p>Comprehensive operating manual for the Technical Pro Hybrid Amplifier (models HB1502U, HB2502U, HB3502U), detailing features, safety precautions, front and rear panel controls, remote functions, and connection guidance.</p>
 <p>Technical Pro Professional Hybrid Amplifier with USB & SD Card Inputs Bluetooth® Compatibility User Manual for H1502UrBT & H2502UrBT & H3502UrBT</p>	<p>Technical Pro Hybrid Amplifier User Manual (H1502UrBT, H2502UrBT, H3502UrBT)</p> <p>Comprehensive user manual for the Technical Pro H1502UrBT, H2502UrBT, and H3502UrBT Professional Hybrid Amplifiers. This guide covers front panel controls, rear panel connections, remote operation, audio sources, speaker setup, Bluetooth connectivity, microphone usage, and safety precautions.</p>
 <p>Technical Pro POWER60</p>	<p>Technical Pro POWER60 2U Professional 2CH Power Amplifier - Specifications & Overview</p> <p>Detailed overview and specifications for the Technical Pro POWER60 2U Professional 2CH Power Amplifier, featuring 6000 watts peak power, XLR/1/4"/RCA inputs, and robust construction.</p>
 <p>Technical Pro POWER65</p>	<p>Technical Pro POWER65 6500W 2U Professional 2-Channel Power Amplifier</p> <p>Detailed specifications and features of the Technical Pro POWER65, a 6500W 2U professional 2-channel power amplifier. Includes input/output details, performance metrics, physical dimensions, and ordering information.</p>
 <p>Technical Pro H4502HD</p>	<p>Technical Pro H4502HD Digital Hybrid Amplifier/Preamp/Tuner with USB, SD, Bluetooth</p> <p>Detailed specifications and features of the Technical Pro H4502HD, a 4500-watt peak power digital hybrid amplifier, preamp, and tuner with USB, SD card, and Bluetooth connectivity.</p>

