

ALOGIC 32C4KPDWT

# ALOGIC Clarity Max Touch 32-inch UHD 4K Monitor Instruction Manual

Model: 32C4KPDWT

[Introduction](#)

[Safety Information](#)

[Setup](#)

[Operation](#)

[Connectivity](#)

[Maintenance](#)

[Troubleshooting](#)

[Specifications](#)

[Warranty &  
Support](#)

## 1. INTRODUCTION

This instruction manual provides essential information for the proper setup, operation, and maintenance of your ALOGIC Clarity Max Touch 32-inch UHD 4K Monitor (Model: 32C4KPDWT). This monitor is designed to enhance your productivity and creative workflows with its large display, integrated webcam, and versatile connectivity options. Key features include a 32-inch UHD 4K display, 8MP smart webcam, USB-C with 65W Power Delivery, and ergonomic adjustments for optimal viewing comfort.

## 2. SAFETY INFORMATION

- **Power Source:** Use only the power adapter supplied with the monitor. Ensure the power outlet meets the voltage requirements specified on the monitor's label.
- **Ventilation:** Do not block ventilation openings. Allow adequate space around the monitor for proper airflow to prevent overheating.
- **Liquid Exposure:** Keep the monitor away from water, rain, or moisture. Do not place objects filled with liquids on or near the monitor.
- **Cleaning:** Disconnect the power cord before cleaning. Use a soft, dry cloth. Avoid liquid or aerosol cleaners.
- **Placement:** Place the monitor on a stable, flat surface. Avoid placing it in direct sunlight or near heat sources.
- **Servicing:** Do not attempt to service the monitor yourself. Refer all servicing to qualified service personnel.

## 3. SETUP

---

### 3.1 Package Contents

---

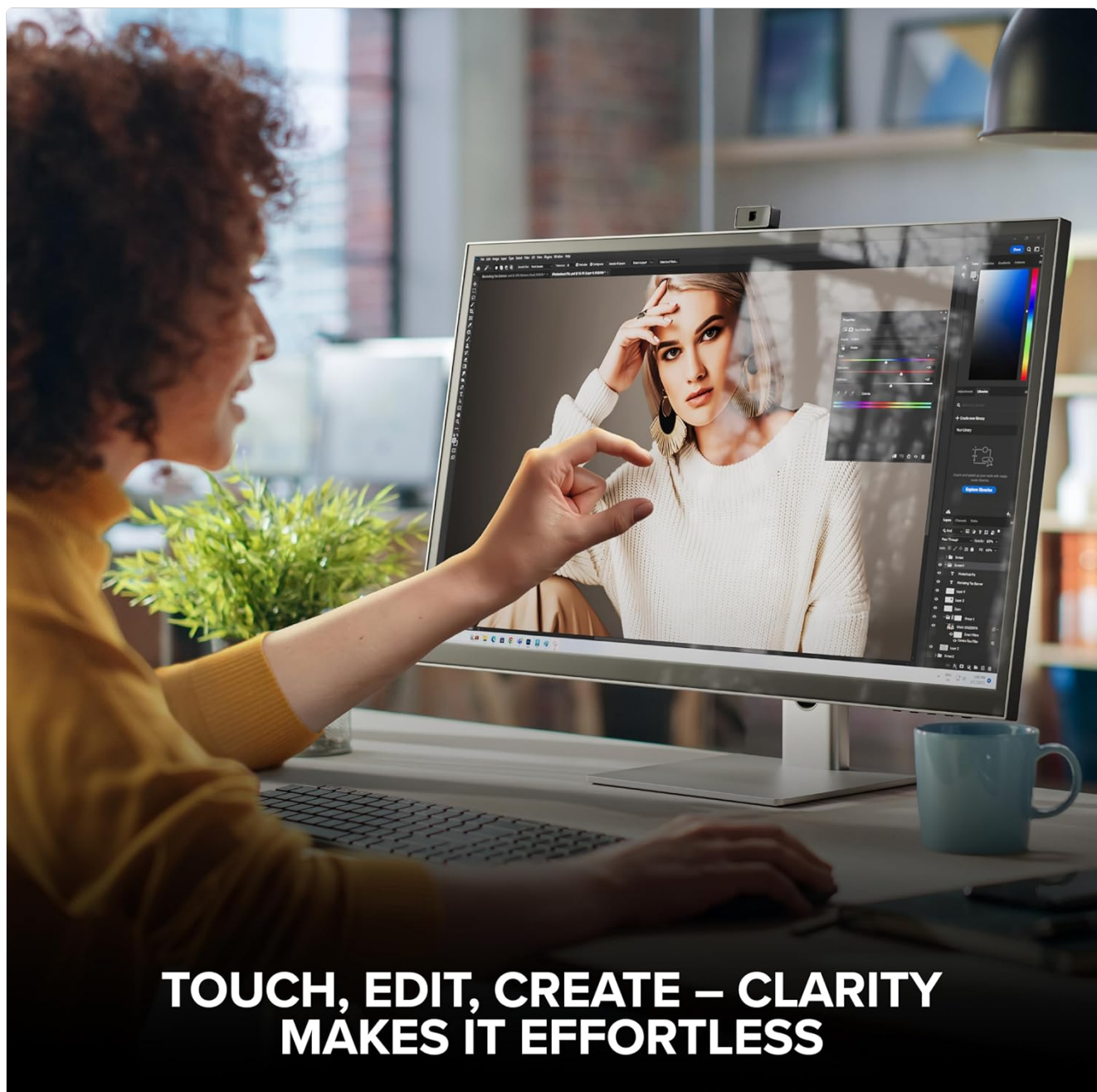
Verify that all items are present in the box:

- ALOGIC Clarity Max Touch 32-inch UHD 4K Monitor
- Monitor Stand (Base and Arm)
- Power Cord
- USB-C Cable
- HDMI Cable
- User Documentation

### 3.2 Assembling the Stand

---

1. Carefully remove the monitor and stand components from the packaging.
2. Attach the monitor arm to the monitor base. Secure it firmly using the provided screw or locking mechanism.
3. Align the assembled stand with the VESA mount on the back of the monitor. Gently push the monitor onto the stand until it clicks into place.



## TOUCH, EDIT, CREATE – CLARITY MAKES IT EFFORTLESS

Figure 1: Front view of the ALOGIC Clarity Max Touch 32-inch monitor on its ergonomic stand.

### 3.3 Connecting Cables

Connect the necessary cables to the monitor and your computer:

1. **Power:** Connect the power cord to the monitor's power input and then to a wall outlet.
2. **Video/Data (USB-C):** For a single-cable solution providing video, data, and 65W power delivery to your laptop, connect the supplied USB-C cable from your computer to the monitor's USB-C (video input) port.
3. **Video (HDMI/DisplayPort):** Alternatively, connect an HDMI or DisplayPort cable from your computer to the corresponding port on the monitor.
4. **USB Accessories:** Connect USB-A accessories (e.g., keyboard, mouse) to the USB-A ports on the monitor's rear USB hub.

# THE CANVAS YOU'VE ALWAYS DREAMED OF



Figure 2: Rear view of the monitor displaying available connectivity ports.

Your browser does not support the video tag.

Video 1: Overview of the ALOGIC Clarity Monitor 32-inch, demonstrating its features including the webcam and various ports.

## 3.4 Powering On

Press the power button located on the monitor to turn it on. The display should activate and show your computer's output. If no signal is detected, ensure all cables are securely connected and your computer is powered on.

## 4. OPERATION

### 4.1 On-Screen Display (OSD) Menu

Navigate the OSD menu using the buttons located on the monitor (typically on the bottom edge or rear). The OSD

allows you to adjust various settings:

- **Picture Settings:** Adjust brightness, contrast, sharpness, and color temperature.
- **Color Modes:** Select from predefined color profiles (e.g., Standard, sRGB, Adobe RGB) or customize your own.
- **Input Selection:** Manually switch between connected video sources (USB-C, HDMI 1, HDMI 2, DisplayPort).
- **Audio:** Control volume for built-in speakers or connected headphones.
- **HDR:** Enable or disable HDR (High Dynamic Range) support.
- **PIP/PBP:** Configure Picture-in-Picture or Picture-by-Picture modes for viewing multiple sources simultaneously.

## 4.2 Webcam Functionality

---

The integrated 8MP smart webcam automatically pops up when activated by your operating system or video conferencing software. Ensure your computer's privacy settings allow access to the webcam for optimal use.

## 4.3 Touch Screen Interaction

---

The Clarity Max Touch monitor features a responsive touchscreen. Use gestures for intuitive navigation and interaction with applications. Swiping from the lower right corner with two fingers can access quick shortcuts or the touch menu.



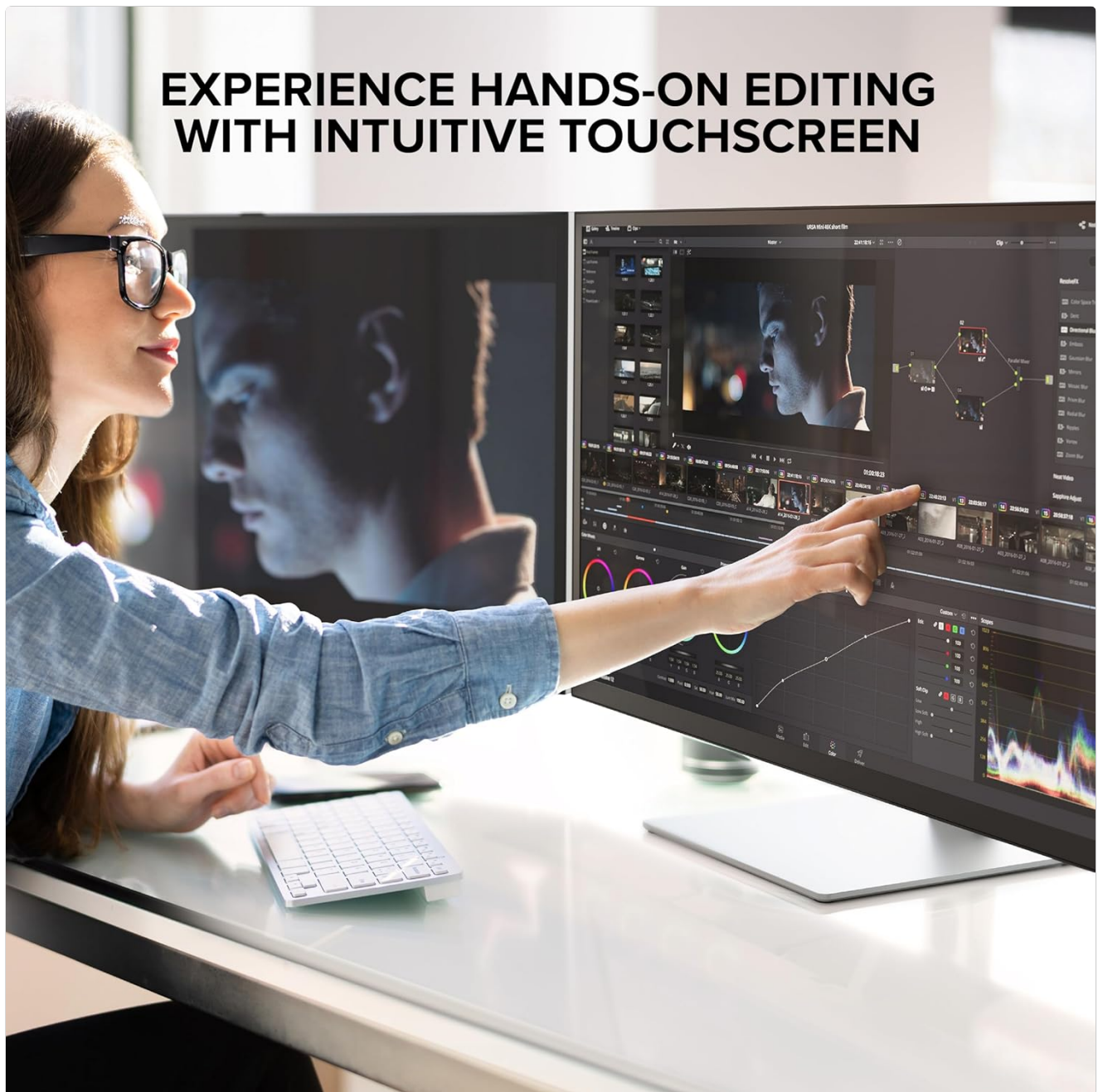


Figure 3: Hands-on editing with the intuitive touchscreen.

## 4.4 Ergonomic Adjustments

The monitor's aluminum stand allows for a wide range of ergonomic adjustments to suit your workspace and comfort:

- **Height Adjustment:** Raise or lower the display to eye level.
- **Tilt:** Adjust the screen's vertical angle ( $-5^{\circ}$  to  $20^{\circ}$ ).
- **Swivel:** Rotate the screen horizontally ( $-90^{\circ}$  to  $90^{\circ}$ ).
- **Pivot:** Rotate the screen  $90^{\circ}$  for portrait or landscape orientation.

Your browser does not support the video tag.

Video 2: A demonstration of the ALOGIC Clarity Max Touch monitor's ergonomic adjustments, including pivot, tilt, and swivel.

## 5. CONNECTIVITY

The ALOGIC Clarity Max Touch monitor offers comprehensive connectivity options:

Port Type	Description
USB-C (Video Input)	Connects to your computer for video, data transfer, and up to 65W power delivery.
USB-C (Downstream)	For connecting USB-C peripherals.
USB-A (x2)	Connect USB peripherals like keyboards, mice, or external storage.
HDMI (x2)	Connect to devices supporting HDMI video output.
DisplayPort (DP)	Connect to devices supporting DisplayPort video output.
3.5mm Audio Out	Connect external speakers or headphones.

## 6. MAINTENANCE

- **Cleaning the Screen:** Gently wipe the screen with a soft, lint-free cloth. For stubborn marks, lightly dampen the cloth with water or a screen-specific cleaning solution. Avoid harsh chemicals.
- **Cleaning the Casing:** Use a soft, dry cloth to clean the monitor casing.
- **Ventilation:** Regularly check and clean the ventilation holes to ensure they are free from dust and debris.

## 7. TROUBLESHOOTING

Problem	Possible Solution
No image on screen	<ul style="list-style-type: none"><li>◦ Ensure the power cord is securely connected and the monitor is powered on.</li><li>◦ Verify the video cable (USB-C, HDMI, DP) is correctly connected to both the monitor and your computer.</li><li>◦ Select the correct input source via the OSD menu.</li><li>◦ Check if your computer is powered on and not in sleep mode.</li></ul>
Image is blurry or distorted	<ul style="list-style-type: none"><li>◦ Adjust the resolution settings on your computer to match the monitor's native resolution (3840x2160).</li><li>◦ Check the video cable for damage or loose connections.</li><li>◦ Perform an auto-adjustment or reset picture settings in the OSD menu.</li></ul>

Problem	Possible Solution
Touchscreen not responding	<ul style="list-style-type: none"><li>◦ Ensure the USB-C cable is connected, as it carries the touch data.</li><li>◦ Restart the monitor and your computer.</li><li>◦ Check for any driver updates for your operating system.</li></ul>
Webcam not working	<ul style="list-style-type: none"><li>◦ Ensure the USB-C cable is connected.</li><li>◦ Check your computer's privacy settings to ensure applications have permission to access the webcam.</li><li>◦ Verify the webcam is physically popped up and not obstructed.</li></ul>

## 8. SPECIFICATIONS

Feature	Detail
Screen Size	32 Inches
Resolution	3840 x 2160 Pixels (UHD 4K)
Aspect Ratio	16:9
Contrast Ratio	3000:1 (HDR400 Support)
Color Support	>16 Million Colors
Webcam	8MP Smart Webcam (Automatic Pop-up)
USB-C Power Delivery	Up to 65W
Connectivity	2x HDMI, 1x DisplayPort, 1x USB-C (Video Input), 1x USB-C (Downstream), 2x USB-A, 1x 3.5mm Audio Out
Ergonomics	Height, Tilt, Swivel, Pivot Adjustment
Item Weight	30 pounds
Product Dimensions	7.45 x 9.84 x 9.84 inches (LxWxH)

## 9. WARRANTY & SUPPORT



Your ALOGIC Clarity Max Touch monitor is covered by a manufacturer's warranty. For detailed warranty information, please refer to the warranty card included in your product packaging or visit the official ALOGIC website.

For technical support, troubleshooting assistance, or to register your product, please contact ALOGIC customer service through their official website or the contact information provided in your user documentation.

## Related Documents - 32C4KPDWT

  	<p><a href="#">ALOGIC Clarity Max Pro/Touch 32" 4K UHD Monitor User Guide</a></p> <p>Comprehensive guide for the ALOGIC Clarity Max Pro/Touch 32-inch 4K UHD Monitor, covering setup, connections, features, and troubleshooting.</p>
  	<p><a href="#">ALOGIC Clarity Max 32" 4K UHD Monitor Quick Start Guide</a></p> <p>Quick start guide for the ALOGIC Clarity Max 32-inch 4K UHD Monitor, covering setup, specifications, connectivity, and troubleshooting. Learn how to connect and use your monitor.</p>
  	<p><a href="#">ALOGIC Aspekt &amp; Aspekt Touch 32" 4K UHD Docking Monitors Quick Start Guide</a></p> <p>This Quick Start Guide provides essential information for setting up and using the ALOGIC Aspekt and Aspekt Touch 32-inch 4K UHD Docking Monitors. It covers package contents, specifications, monitor controls, port descriptions, assembly instructions, connection methods, touchscreen usage, troubleshooting, and safety warnings.</p>
	<p><a href="#">ALOGIC MagForce Duo Play 2-in-1 USB-C to HDMI + VGA Adapter   4K HDMI, 1080p VGA, 100W PD</a></p> <p>The ALOGIC MagForce Duo Play 2-in-1 adapter connects your USB-C device to HDMI and VGA displays. Features 4K@60Hz HDMI, 1080p@60Hz VGA, and 100W Power Delivery for charging.</p>
	<p><a href="#">ALOGIC Matrix USB-C Apple Watch Charger User Manual</a></p> <p>User manual for the ALOGIC Matrix USB-C Apple Watch Charger, providing specifications, setup instructions, and FCC compliance information.</p>
	<p><a href="#">ALOGIC Thunderbolt 4 BLAZE Docking Station (TB4D3TB) - Specifications and Features</a></p> <p>Detailed specifications, features, and connectivity information for the ALOGIC Thunderbolt 4 BLAZE Docking Station (Model TB4D3TB), designed to enhance productivity with dual 4K display support and extensive port options.</p>

