



[Manuals.plus](#) /

> [Jolydale](#) /

> Jolydale 10' x 14' Gazebo Instruction Manual

Jolydale 10' x 14' Gazebo

Jolydale 10' x 14' Gazebo Instruction Manual

Model: 10' x 14' Gazebo with Sloped Roof

1. INTRODUCTION

Thank you for purchasing the Jolydale 10' x 14' Gazebo. This manual provides essential information for the safe assembly, proper operation, and effective maintenance of your new gazebo. Please read all instructions carefully before beginning assembly and retain this manual for future reference.



Image 1.1: The Jolydale 10' x 14' Gazebo installed on a patio, providing shaded outdoor living space.

2. SAFETY INFORMATION

Important Safety Precautions:

- Always assemble and secure the gazebo to a wall using the provided expansion bolts to ensure maximum stability and safety.
- Keep children and pets away from the assembly area to prevent accidents.
- Always follow the instructions provided to avoid potential hazards during assembly and disassembly.
- Ensure all connections are tightened securely before and after each use, especially after strong winds or heavy precipitation.

3. PARTS LIST

Before beginning assembly, verify that all parts and hardware are present and undamaged. Refer to the included step-by-step instructions for a detailed list of numbered parts and hardware. If any parts are missing or damaged, please contact



2 BOXES EASY TO INSTALL

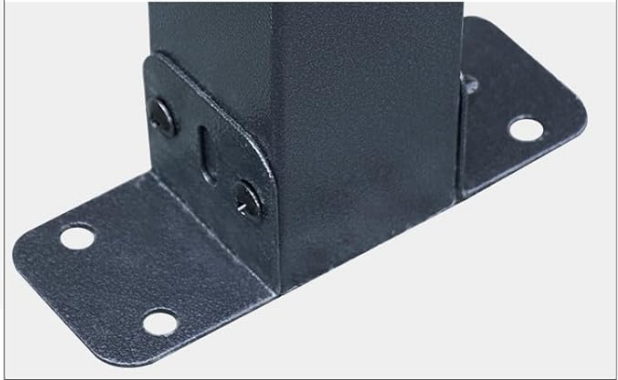
TRIANGLE STRUCTURE

The triangular structure makes the hardtop gazebo much stable and sturdy.



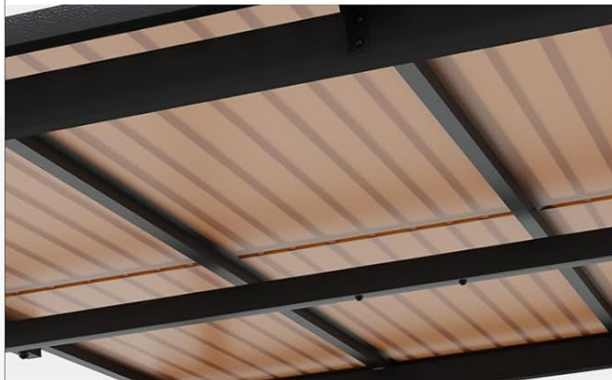
STABLE FRAME LEG

With 4 pre-drilled holes for easy attachment of any type of floor and secure mounting.



MULTI-FRAME SUPPORT

Crisscrossing aluminum tubes offer the strong support for the top panel, never rust.



STURDY AND STABLE

Four screws are used to connect to the wall to improve stability and can be used in harsh environments.



Image 3.1: Key structural components of the gazebo, illustrating the triangular structure for stability, pre-drilled holes on frame legs for secure mounting, multi-frame support with aluminum tubes, and screws for wall connection.

4. SETUP AND ASSEMBLY

The product is equipped with step-by-step instructions for customers. All the parts and hardware you need are clearly numbered. Follow these guidelines for a successful assembly:

1. **Preparation:** Unpack all components and lay them out. Identify each part using the provided numbered diagrams.
2. **Teamwork:** While assembly can be managed by two people, having three individuals can significantly ease the process and reduce assembly time.
3. **Wall Mounting:** It is highly recommended to mount the awning against a sturdy wall using the provided expansion bolts to ensure maximum stability. The frame legs feature 4 pre-drilled holes for easy attachment to any type of floor.
4. **Structural Integrity:** The gazebo features a triangular structure for enhanced stability and sturdiness. Crisscrossing

aluminum tubes provide strong support for the top panels and are designed to resist rust. Four screws are used to connect the structure to the wall, improving stability in various environments.

5. **Review Instructions:** Some users have noted that the instructions can be challenging to interpret. Read through all steps multiple times before starting to avoid disassembling and reassembling parts.

5. OPERATING INSTRUCTIONS

Your Jolydale Gazebo is designed for outdoor use, offering protection and comfort in various conditions.

- **Weather Resistance:** The pergola is engineered to withstand challenging weather conditions. It has an excellent load-bearing capacity of 55 lbs/ , a wind resistance level of 31-38 mph, and a snow carrying depth of 4 inches when securely fastened to the wall and ground.
- **Sun Protection:** The roof is constructed from premium polycarbonate hollow sheets, which are heavily tinted to block UPF 50+ and 99% of UV rays. This provides effective sunshade and a cool, comfortable space.
- **Durability:** The high-quality materials ensure long-term use and a long lifespan for the gazebo.

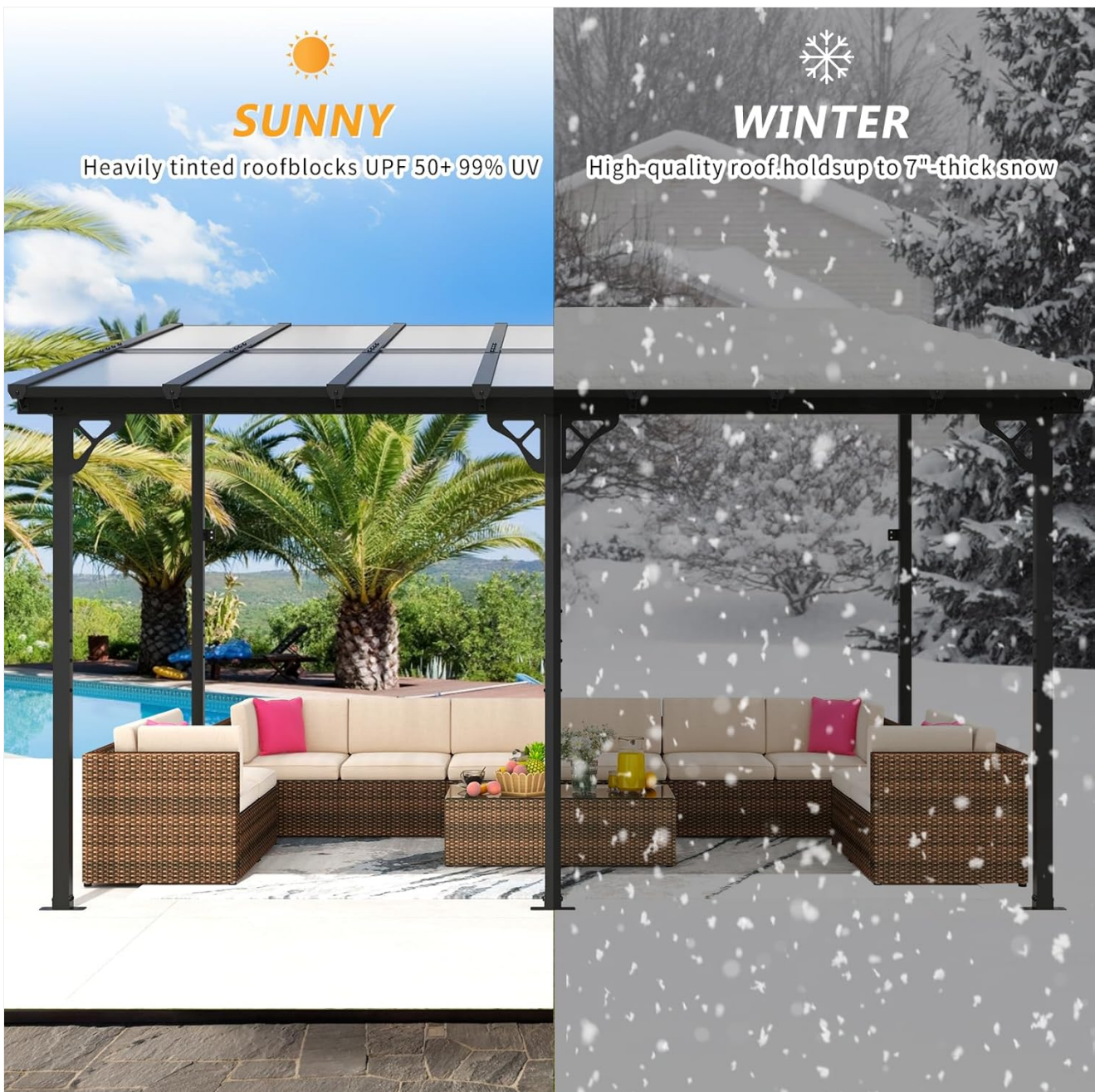


Image 5.1: The gazebo's performance in different seasons, demonstrating its UV protection in sunny weather and its ability to withstand up to 7 inches of snow in winter.



SUN PANELS

Heavily tinted and allow some light through



Anti-UV



Smooth
Drainage



Waterproof



Windproof:
40-70Mph



Fire-resistant



Feavy-duty
Frame

Image 5.2: Detailed view of the sun panels, emphasizing their anti-UV, smooth drainage, waterproof, windproof, fire-resistant properties, and the robust heavy-duty frame.

6. MAINTENANCE

Regular maintenance will extend the life and appearance of your gazebo.

- **Cleaning:** Clean the polycarbonate roof panels and metal frame periodically with mild soap and water. Avoid abrasive cleaners or harsh chemicals that could damage the materials.
- **Inspection:** Regularly inspect all bolts, screws, and connections to ensure they remain tight. Re-tighten as necessary.
- **Snow Removal:** While the roof is designed to handle snow, it is advisable to remove excessive snow accumulation to prevent undue stress on the structure, especially during heavy snowfall.
- **Drainage:** Ensure the sloped roof's drainage system remains clear of debris to allow for smooth water runoff.

7. TROUBLESHOOTING

If you encounter issues with your gazebo, consider the following:

- **Stability Issues:** If the gazebo feels unstable, ensure it is securely anchored to both the wall and the ground using all provided expansion bolts and pre-drilled holes. Check that all frame connections are tight.
- **Leaking Roof:** If the roof panels are leaking, carefully inspect the installation of each panel and the sealing strips. Ensure panels are correctly seated and all connections are properly sealed according to the assembly instructions.
- **Difficulty Assembling:** If you find the assembly instructions unclear, review them thoroughly. It may be helpful to watch online assembly videos if available, or contact customer support for clarification.

8. SPECIFICATIONS

Brand	Jolydale
Model	10' x 14' Gazebo
Product Dimensions (L x W x H)	164.17" x 110.24" x 98.03" (13.68 ft x 9.19 ft x 8.17 ft)
Item Weight	177 Pounds
Frame Material	Metal
Roof Material	Polycarbonate Hollow Sheet
Water Resistance Level	Waterproof
Ultraviolet Light Protection	Yes (UPF 50+, 99% UV Block)
Load Bearing Capacity	55 lbs/
Wind Resistance Level	31-38 mph
Snow Carrying Depth	4 inches (up to 7 inches with high-quality roof)
Assembly Required	Yes

MODULAR SEATING

14 X 10

FT Hard Top Gazebo



Image 8.1: Dimensional diagram of the 14 x 10 ft gazebo, illustrating its overall length, width, and height.

9. WARRANTY AND SUPPORT

Warranty: Your Jolydale Gazebo comes with a one-year warranty from the date of purchase.

Customer Support: If you have any questions regarding assembly, operation, maintenance, or warranty claims, please do not hesitate to contact our customer service team. We are committed to providing excellent service and assistance.