

## **AUTOKAY 25300-F68-0000**

# **AUTOKAY CVT Drive Clutch Belt Instruction Manual**

Model: 25300-F68-0000

Brand: AUTOKAY

## **1. INTRODUCTION**

---

This manual provides essential information for the proper installation, operation, and maintenance of your AUTOKAY CVT Drive Clutch Belt. Adhering to these instructions will help ensure optimal performance and longevity of the product.

The AUTOKAY CVT Drive Clutch Belt is designed for various UTV and ATV models, offering reliable power transmission. It replaces the following part numbers:

- 25300-F68-0000
- 21300-010000-0001
- P010000213000001
- 25300-010-0001

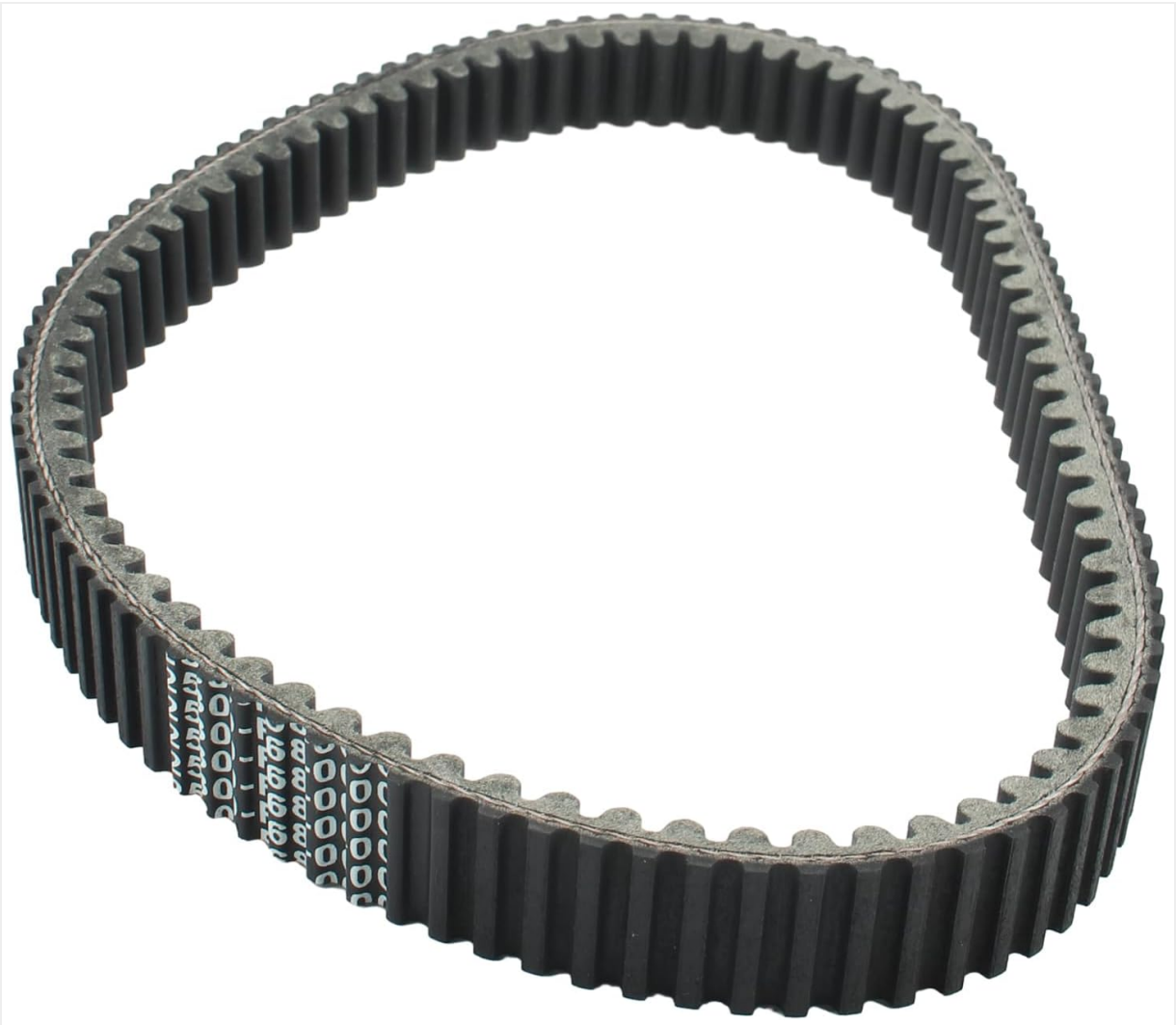
## **2. PRODUCT OVERVIEW**

---

The AUTOKAY CVT Drive Clutch Belt is engineered for durability and efficient power transfer in demanding off-road conditions. Below are images showcasing the product's design and features.



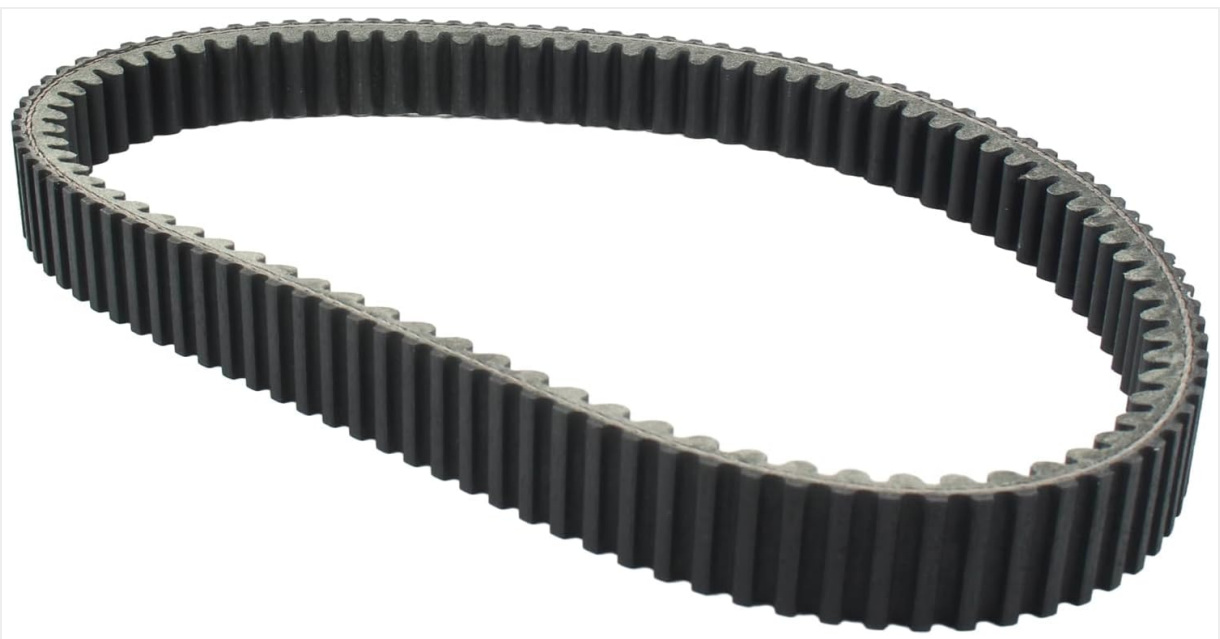
A continuous variable transmission (CVT) drive clutch belt, black with ribbed inner and outer surfaces, designed for power transfer in UTV and ATV applications.



A side view of the drive belt, highlighting the ribbed design on both sides for optimal grip and flexibility.



An angled perspective of the drive belt, showing its robust construction and uniform tooth spacing.



Detailed view of the belt's teeth, indicating precision engineering for efficient power transmission and reduced slippage.





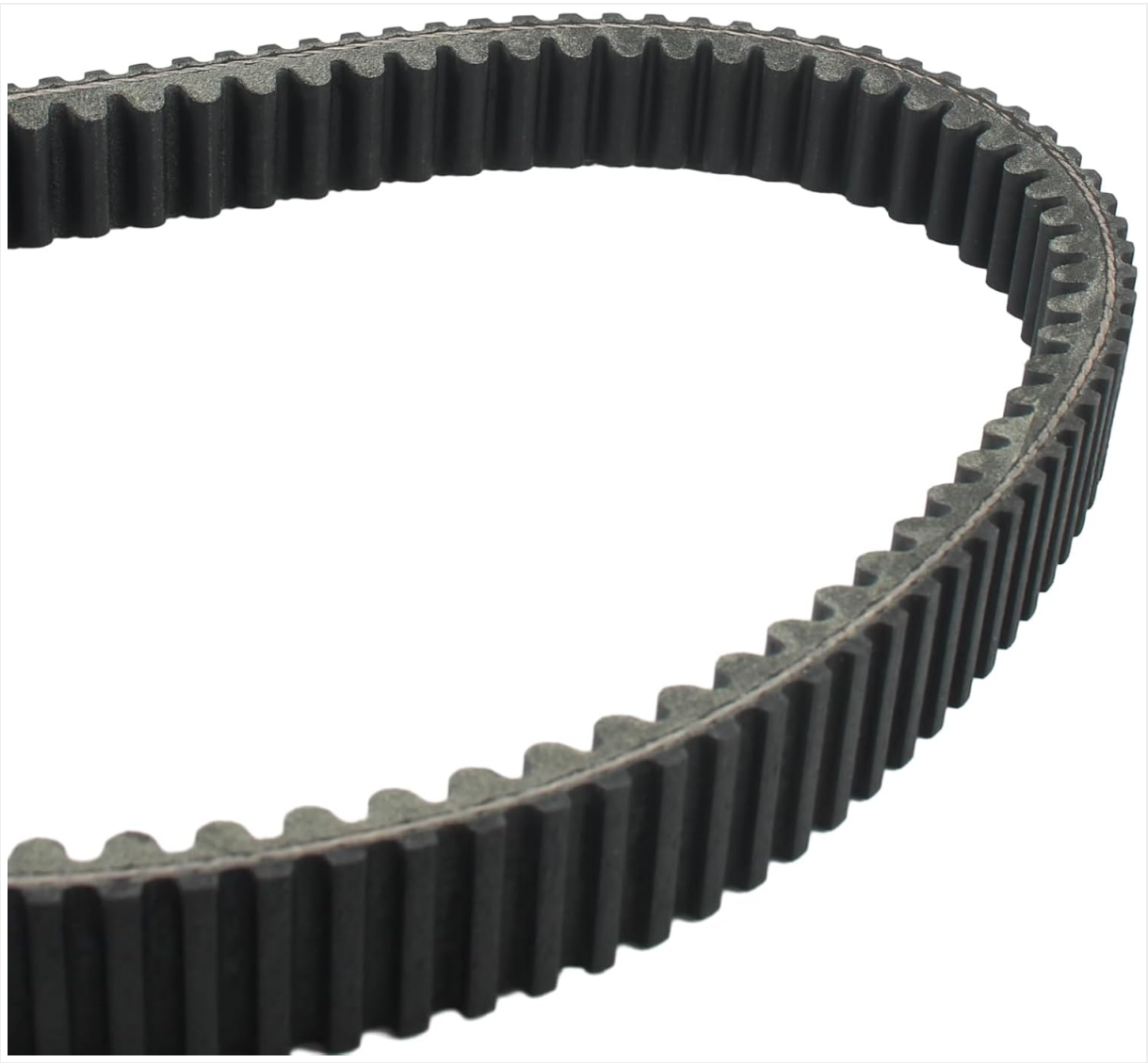
A person's hands gently bending the drive belt, illustrating its flexibility which is crucial for smooth operation and durability.



A close examination of the belt's surface texture, designed to withstand high temperatures and friction.



The drive belt displaying its part number and manufacturing details printed on the side, ensuring authenticity and proper fitment.



A detailed shot of the inner ribbed surface of the drive belt, essential for engaging with the clutch pulleys.

### 3. SPECIFICATIONS

---

Specification	Detail
Manufacturer	AUTOKAY
Brand	AUTOKAY
Item Weight	1.06 pounds
Package Dimensions	9.57 x 9.13 x 1.61 inches
Manufacturer Part Number	25300-F68-0000
ASIN	B0CS38WNXD
Date First Available	January 11, 2024
Model Number	25300-F68-0000

### 4. COMPATIBILITY

---

This CVT Drive Clutch Belt is compatible with a range of UTV and ATV models. Please verify your vehicle's part number against the replacement numbers provided in the introduction for exact fitment.

### Known Compatible Models:

- For Hisun Strike 800
- For Massimo MSU800
- For Bennche Spire 800
- For Coleman UT800 AT800
- For Hisun UTV 1000
- For Hisun ATV 1000
- For ODES
- For Spire
- For Sector
- For Dominator
- For Raider
- For Ravager

## 5. SETUP AND INSTALLATION

---

Proper installation is crucial for the performance and lifespan of your new drive belt. If you are unsure about any steps, it is recommended to consult a qualified mechanic or refer to your vehicle's specific service manual.

### General Installation Steps:

1. **Safety First:** Ensure the vehicle is turned off, cooled down, and secured on a stable surface. Disconnect the battery if necessary.
2. **Access the Clutch System:** Locate and carefully remove the clutch cover to expose the primary and secondary clutches and the old drive belt.
3. **Remove Old Belt:** Compress the secondary clutch to loosen the old belt. Carefully remove the old belt from both pulleys.
4. **Inspect and Clean:** Thoroughly inspect both clutch sheaves for any wear, damage, or debris. Clean any old belt residue, glazing, oils, or dirt from the clutch surfaces. This step is critical for preventing premature wear on the new belt.
5. **Install New Belt:** Place the new belt over the primary clutch. Then, compress the secondary clutch again and guide the belt into the secondary clutch sheaves. Ensure the belt is seated correctly and evenly.
6. **Verify Tension:** Once installed, rotate the clutch system manually to ensure the belt is properly seated and has appropriate tension. The belt should not be too loose or too tight.
7. **Reassemble:** Reinstall the clutch cover and any other components removed during the process.
8. **Break-in Period:** Follow the manufacturer's recommended break-in procedure for the new belt, which typically involves varying speeds and loads for the first few miles to allow the belt to seat properly.

### Installation and Product Videos:

Your browser does not support the video tag.

This video provides a visual overview of the AUTOKAY CVT Drive Clutch Belt, demonstrating its physical characteristics and flexibility.

Your browser does not support the video tag.

This video demonstrates the process of replacing a drive belt on a Polaris ATV, highlighting key steps for proper

installation.

Your browser does not support the video tag.

This video illustrates the features of a high-performance drive belt and provides a step-by-step guide for its installation in a UTV/ATV.

Your browser does not support the video tag.

This video showcases the triple-layer thickened design and high tensile strength of a UTV/ATV clutch drive belt, along with a brief demonstration of its installation.

## 6. OPERATING INSTRUCTIONS

---

Once the new drive belt is installed and the break-in period is complete, operate your UTV/ATV according to the vehicle manufacturer's guidelines. The CVT system is designed to automatically adjust gear ratios, providing smooth power delivery.

- **Smooth Acceleration:** Avoid sudden, aggressive acceleration, especially during the initial break-in period, to allow the belt to seat properly and prevent premature wear.
- **Monitor Performance:** Pay attention to any changes in vehicle performance, such as slipping, unusual noises, or loss of power, which could indicate a belt issue.
- **Avoid Overloading:** Do not exceed the vehicle's recommended towing or cargo capacity, as this can put excessive strain on the drive belt.

## 7. MAINTENANCE

---

Regular inspection and maintenance of your CVT drive belt are essential for extending its lifespan and ensuring safe operation.

- **Routine Inspection:** Periodically remove the clutch cover and visually inspect the drive belt for signs of wear, cracks, fraying, glazing, or missing teeth. Check for any foreign objects lodged in the clutch system.
- **Clean Clutch Area:** Keep the clutch and belt area clean from dirt, dust, and debris. Contaminants can cause slippage and accelerate wear.
- **Check Alignment:** Ensure the primary and secondary clutches are properly aligned. Misalignment can lead to uneven belt wear.
- **Replace as Needed:** Replace the drive belt if any signs of significant wear or damage are observed, or according to your vehicle manufacturer's recommended service intervals.

## 8. TROUBLESHOOTING

---

If you experience issues with your CVT system, consider the following common troubleshooting steps:

- **Belt Slipping:** This can be caused by a worn belt, glazed clutch sheaves, oil/grease contamination, or incorrect belt tension. Inspect the belt and clutches, clean as necessary, and ensure proper installation.
- **Unusual Noises (Squealing, Grinding):** Squealing often indicates belt slippage or contamination. Grinding might suggest clutch component wear or foreign objects. Inspect the belt and clutches thoroughly.
- **Loss of Power/Poor Acceleration:** A worn or damaged belt, or issues with the clutch components (e.g., worn rollers, springs), can lead to reduced performance. Check the belt condition and clutch operation.
- **Vibration:** Excessive vibration can be a sign of an unbalanced or damaged belt, or issues with clutch components. Inspect the belt for damage and ensure it is seated correctly.

If problems persist after basic troubleshooting, it is advisable to seek professional assistance.

## **9. WARRANTY AND SUPPORT**

---

For information regarding warranty coverage, returns, or technical support, please refer to the AUTOKAY official website or contact their customer service directly. Keep your purchase receipt as proof of purchase.