

## Pisichen HD-215TS-US

# Pisichen 21.5 Inch Full HD Touchscreen Monitor

## USER MANUAL

### 1. Introduction

This manual provides comprehensive instructions for the setup, operation, and maintenance of your new Pisichen 21.5 Inch Full HD Touchscreen Monitor. Designed for versatility and ease of use, this monitor features a responsive 10-point multi-touch function, Full HD 1920x1080 resolution, and multiple connectivity options to enhance your productivity and entertainment experience.

Key features include:

- **Responsive 10-Point Touch:** Provides a smooth and natural interaction with your content.
- **Full HD 1920x1080 Resolution:** Delivers accurate and vibrant colors with a 60Hz refresh rate.
- **Multiple Connectivity Ports:** HDMI, VGA, USB 2.0 (for touch function), and DC power port for broad compatibility.
- **Versatile Display Modes:** Supports duplicated, extended, and second screen modes.
- **Built-in Speakers & VESA Compatible:** Integrated audio and flexible mounting options.



**Pisichen**

### 22-inch Touch Screen Monitor

Capacitive 10-point touch     

Multi-touch technology for more interactivity

**Full HD 1920x1080p**

Full HD resolution (1920x1080) provides crisp and detailed images.

 VESA compatibility allows you to mount the monitor in your preferred position.

Image: Overview of the Pisichen Touchscreen Monitor highlighting its capacitive 10-point touch, multi-touch technology, Full HD 1920x1080 resolution, and VESA compatibility.

## 2. Package Contents

Please verify that all the following items are included in your package:

- 21.5 Inch Touchscreen Monitor
- Monitor Stand
- Power Adapter
- HDMI Cable
- USB 2.0 Cable (for touch function)
- User Manual (this document)

## Comes Ready to Use

Complete with accessories, no need to purchase additional accessories.



Image: The complete set of items included in the product package, ensuring you have all necessary components for setup.

## 3. Setup

### 3.1. Assembling the Monitor Stand

To attach the monitor stand:

1. Carefully place the monitor face down on a soft, clean surface to prevent scratches.
2. Align the stand arm with the mounting holes on the back of the monitor.
3. Secure the stand arm to the monitor using the provided screws.
4. Attach the base of the stand to the stand arm, ensuring it clicks securely into place or is fastened with screws if applicable.



#### **Stable Stand**

Ensure that the user in the touch operation of the screen without shaking, to withstand the mechanical stress generated by frequent operation of the equipment, will not appear in the use of the screen appears "head shaking", the situation of instability.

Image: Illustration of the monitor stand, emphasizing its stable design to prevent shaking during touch operation.

### 3.2. Connecting the Monitor

The monitor offers various ports for connecting to your devices:

- **HDMI Port:** Connects to PCs, laptops, gaming consoles (PS3/4, Switch), etc., for video and audio.
- **VGA Port:** Connects to older PCs, laptops, or other devices for video output.
- **USB 2.0 Port:** *Essential for enabling the touch function.* Connect this to a USB port on your computer.
- **DC Port:** Connect the provided power adapter to this port to power the monitor.

For touch functionality, ensure both the video cable (HDMI or VGA) and the USB 2.0 cable are connected from the monitor to your computer.



## Different Ports for Different Connection

Compatible with devices with different interfaces.

<div>1 HDMI Port</div> <div></div>	<div>2 VGA Port</div> <div></div>	
<div>3 Headphone jack</div> <div></div>	<div>4 DC Power Port</div> <div></div>	<div>5 USB 2.0 Touch Port</div> <div></div>

Image: Detailed view of the monitor's connectivity ports and their respective uses.



## Display Only

HDMI or VGA + DC



## Touchscreen & Display

HDMI or VGA + USB + DC



Image: Visual guide for connecting the monitor for display only or for both display and touch functionality.

Your browser does not support the video tag.

Video: This official product video demonstrates the unboxing, assembly, and initial connection of the 21.5-inch touchscreen monitor, including basic touch interaction.

## 4. Operating

### 4.1. Touch Functionality

The monitor supports 10-point multi-touch, allowing for intuitive interaction with your content. You can use gestures similar to those on a smartphone or tablet, such as:

- **Tap:** Select items or open applications.
- **Drag:** Move windows or scroll through content.
- **Pinch-to-Zoom:** Enlarge or shrink images and documents.
- **Two-Handed Operation:** Interact with multiple points simultaneously for enhanced control.

# Multi-touch, two-handed operation

Ten-point multi-touch, receive up to ten touch signals at the same time.



Image: Demonstration of the monitor's multi-touch capabilities, allowing for simultaneous input from multiple fingers.

# Get rid of a mouse and keyboard

## Easily zoom in and out of a page without using a mouse.



Image: The touchscreen allows for easy navigation and interaction, reducing the need for a mouse and keyboard for many tasks.

## 4.2. Display Modes

The monitor supports flexible display options to suit your needs:

- **Duplicated Mode:** Mirrors your primary display, ideal for presentations.
- **Extended Mode:** Extends your desktop workspace, allowing you to drag windows between screens for increased productivity.
- **Second Screen Mode:** Uses only the touchscreen monitor as the primary display.

These modes can typically be configured through your operating system's display settings.

## 4.3. Use Cases

The Pisichen Touchscreen Monitor is suitable for a variety of applications:

- **Retail & Catering Systems:** Facilitates fast touch ordering and checkout.
- **Vertical Screen Office:** Ideal for programmers and text editors, allowing more lines of code or document content to be displayed.
- **Self-service Terminals:** Enables users to handle transactions independently, such as at ATMs or



registration machines.

- **Warehousing and Logistics Management:** Quick response to commands for goods sorting and inventory inquiry.
- **Production Line Console:** Real-time monitoring and adjustment of production parameters.

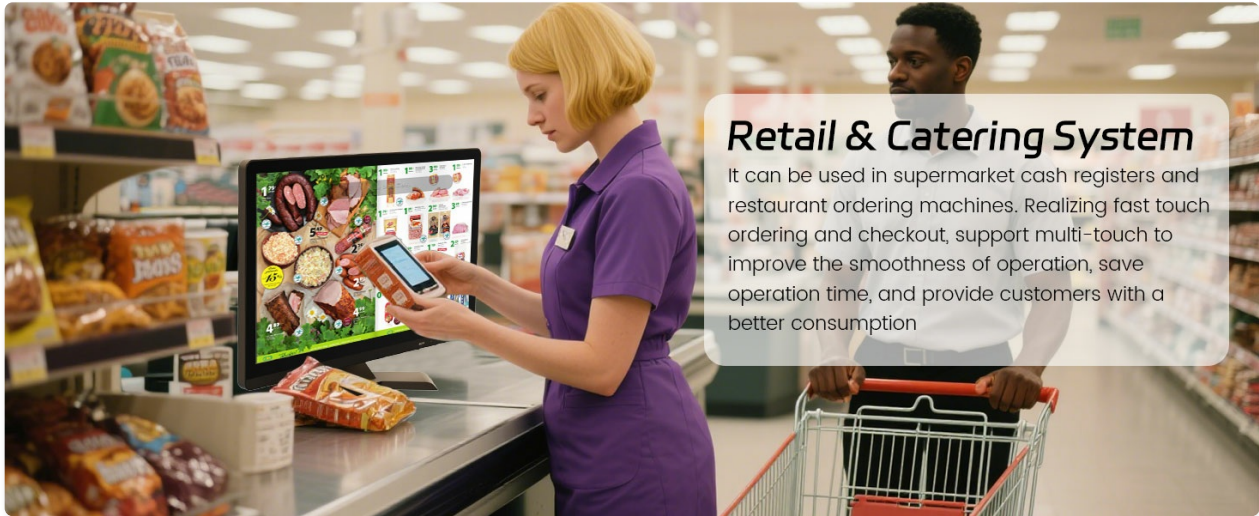


Image: Example of the monitor's application in retail and catering environments.

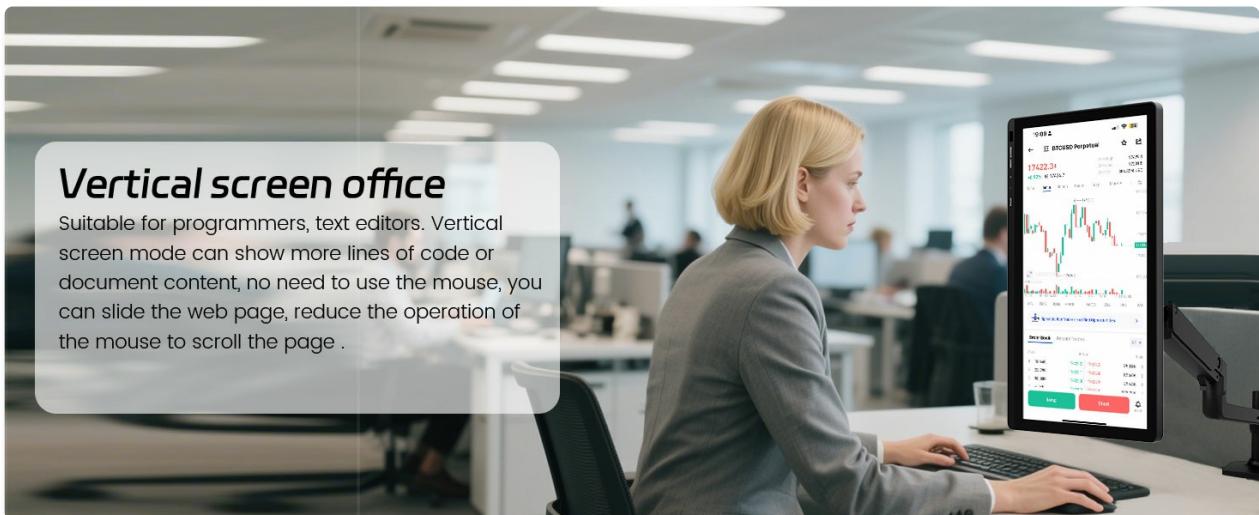


Image: The monitor can be used in a vertical orientation, beneficial for displaying long documents or code.

## 5. Maintenance

To ensure the longevity and optimal performance of your touchscreen monitor, follow these maintenance guidelines:

- **Cleaning the Screen:** Use a soft, lint-free cloth slightly dampened with water or a screen-cleaning solution. Avoid harsh chemicals or abrasive materials.
- **General Cleaning:** Wipe the monitor casing with a soft, dry cloth.
- **Avoid Direct Sunlight:** Prolonged exposure to direct sunlight can affect screen performance and lifespan.
- **Proper Ventilation:** Ensure the monitor's vents are not blocked to prevent overheating.



## 6. Troubleshooting

If you encounter issues with your monitor, please refer to the following common troubleshooting steps:

- **No Display:** Ensure the power adapter is securely connected to both the monitor and a power outlet. Verify that the HDMI or VGA cable is firmly connected to both the monitor and your computer. Check your computer's display settings to ensure the monitor is detected and configured correctly.
- **Touch Function Not Working:** Confirm that the USB 2.0 cable is properly connected from the monitor to your computer. The touch function requires this USB connection in addition to the video cable. Restart your computer. For Windows users, you may need to calibrate the touchscreen (search for "Calibrate the screen for pen or touch input" in Windows settings).
- **Flickering Screen:** Check cable connections. Ensure the monitor's refresh rate is set correctly in your computer's display settings.
- **Poor Image Quality:** Adjust monitor settings (brightness, contrast, color) using the buttons on the monitor. Ensure the display resolution on your computer matches the monitor's native resolution (1920x1080).
- **No Audio from Built-in Speakers:** Verify that the audio output on your computer is set to the monitor. Check the volume levels on both the monitor and your computer.

## 7. Specifications

Feature	Specification
Model Number	HD-215TS-US
Screen Size	21.5 Inches
Resolution	1920 x 1080 Pixels (Full HD 1080p)
Aspect Ratio	16:9
Image Brightness	250 Candela
Touch Points	10-Point Multi-Touch
Connectivity	HDMI, VGA, USB 2.0 (for touch), DC Port
Built-in Speakers	Yes
VESA Compatibility	75mm x 75mm
Product Dimensions	0.78 x 20.4 x 14.9 inches
Item Weight	7 pounds
Manufacturer	Shenzhen Konowa Electronics Co., LTD

Feature	Specification
Country of Origin	China

# Frameless Design



Image: Physical dimensions and VESA mounting details of the monitor.

## 1080P Full HD Resolution

Achieving a dot pitch of approximately 0.248mm on a 22-inch screen, it dramatically improves the clarity of images, text, and data, and avoids the "large grain" feeling of low-resolution screens.






## 8. Warranty and Support

For detailed warranty information, please refer to the documentation provided with your purchase or contact Pisichen customer support.

An official User Manual in PDF format is available for download:[Download User Manual \(PDF\)](#)

### Related Documents - HD-215TS-US

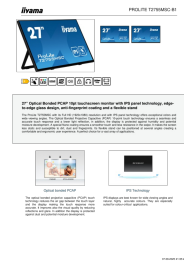
	<p><a href="#">Prechen 24 Inch Touchscreen Monitor User Manual   HD-24</a></p> <p>Comprehensive user manual for the Prechen 24 Inch Touchscreen Monitor (HD-24), covering setup, connections, features, troubleshooting, and product guarantee.</p>
	<p><a href="#">iiyama ProLite TF2215MC-B2: 21.5-inch Open Frame Touch Monitor</a></p> <p>Detailed specifications and features of the iiyama ProLite TF2215MC-B2, a 21.5-inch open-frame monitor with IPS panel, 10-point projective capacitive touch, touch-through-glass capability, and IP65 front rating, ideal for kiosks and public-facing applications.</p>
	<p><a href="#">22" Full HD Smart Touch Screen Stand with Wi-Fi and Speakers User Guide   HSD-215</a></p> <p>User guide for the 22" Full HD Smart Touch Screen Stand (HSD-215) by Kogan. Includes setup, operation, safety warnings, components, and specifications for this interactive display stand.</p>
	<p><a href="#">iiyama ProLite T2736MSC-B1 27-inch Full HD 10-Point Touchscreen Monitor Datasheet</a></p> <p>Detailed specifications and features of the iiyama ProLite T2736MSC-B1, a 27-inch Full HD AMVA LED monitor with edge-to-edge glass, 10-point projective capacitive touch technology, and superior scratch resistance for interactive applications.</p>





[ViewSonic ID2456 Quick Start Guide](#)

This document provides a quick start guide for the ViewSonic ID2456 display, covering setup, connection options, driver downloads, product registration, and compliance information.



[iiyama ProLite T2755MSC-B1: 27-inch Full HD IPS Touchscreen Monitor Specifications](#)

Detailed specifications for the iiyama ProLite T2755MSC-B1, a 27-inch Full HD (1920x1080) IPS touchscreen monitor featuring Optical Bonded PCAP technology, edge-to-edge glass, and an anti-fingerprint coating for versatile applications.