

KROAK 1700 Lbs

KROAK Aluminum Loading Ramps User Manual

Model: 1700 Lbs

Brand: KROAK

INTRODUCTION

The KROAK Aluminum Loading Ramps are designed for safe and efficient loading and unloading of various powersports vehicles and equipment onto pickup trucks and trailers. Constructed from high-quality aluminum alloy, these ramps offer a balance of durability and lightweight portability. Each ramp is rated for 850 lbs, providing a combined capacity of 1700 lbs for secure transport of ATVs, UTVs, lawn mowers, tractors, and other small vehicles. Their quick-folding design allows for easy setup and compact storage, making them a practical solution for your loading needs. The ramps feature non-slip surfaces and include adjustable safety straps to ensure stability during use.

KROAK

1700LBS HEAVY LOAD-BEARING

Safely Load-Bearing for Multiple Models



9lbs/0.02t

1700lbs/0.77t



Bicycles



Trolleys



Electric scooters



Motorcycles



ATV/UTV



Lawn mowers



Tractors



Pickup truck

Image: KROAK Aluminum Loading Ramps supporting an ATV being driven onto a truck bed, demonstrating their heavy load-bearing capability for various vehicles.

What's in the Box

Upon opening your KROAK Aluminum Loading Ramps package, you will find the following components:

- 2 x KROAK Aluminum Loading Ramps (folded)
- 2 x Adjustable Safety Straps
- 1 x Pair of Cut-Resistant Gloves
- 1 x User Manual (this document)

WHAT'S IN THE BOX

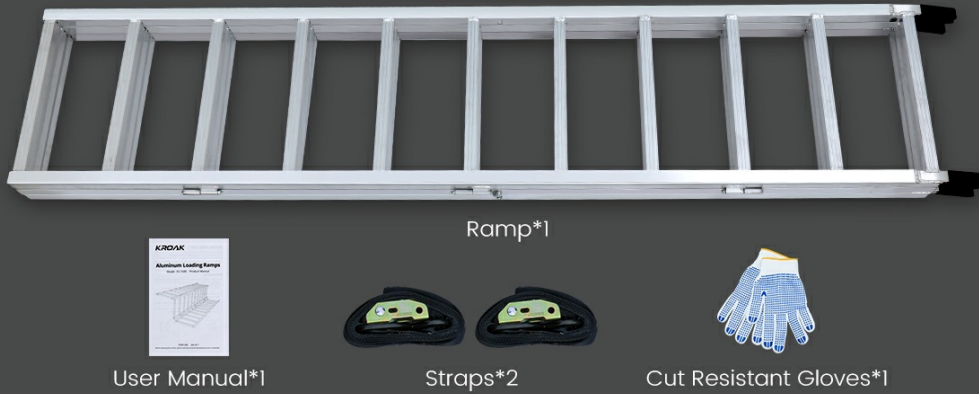


Image: A visual representation of the package contents, showing one folded ramp, two safety straps, one pair of cut-resistant gloves, and the user manual.

SETUP INSTRUCTIONS

Follow these steps to properly set up your KROAK Aluminum Loading Ramps:

1. **Unboxing:** Carefully remove the ramps and all accessories from the packaging. Inspect for any damage.
2. **Positioning the Ramps:** Place the folded ramps on a stable, level surface behind your truck or trailer. Ensure the tailgate is fully lowered.
3. **Unfolding the Ramps:** Unfold each ramp completely. The unfolded size for one piece is approximately 90 inches long by 12 inches wide.
4. **Securing to Tailgate:** Position the rubber-tipped fingers of the ramp securely onto the edge of your truck's tailgate or trailer. These rubber tips are designed to prevent slipping and protect your vehicle's surface.
5. **Attaching Safety Straps:** Use the provided adjustable safety straps to firmly secure the ramps to your truck or trailer.
 - Feed the flat end of the strap through the buckle on the ramp.
 - Loop the other end of the strap (with the hook) around a secure anchor point on your truck or trailer (e.g., a hitch receiver, a tie-down point).
 - Tighten the strap to ensure the ramp is firmly held in place and cannot shift or lift during loading.

HOW TO USE?

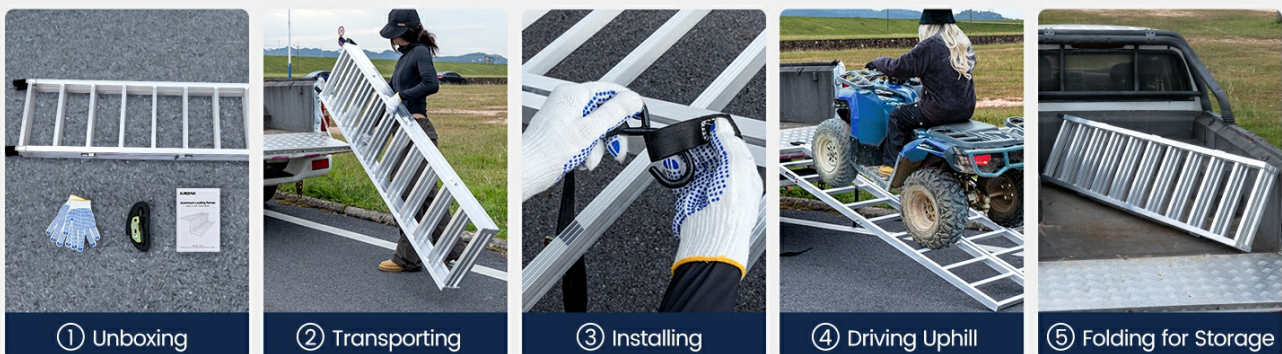


Image: Visual guide illustrating the setup process, including unboxing, transporting, installing, driving uphill, and folding for storage.

ADJUSTABLE STRAP USAGE GUIDE

Securing The Ramp Firmly to The Tailgate with Adjustable Safety Straps



Image: Close-up instructions for securing the ramps using the adjustable safety straps, showing how to thread and attach them.

OPERATING INSTRUCTIONS

Once the ramps are securely set up, you can proceed with loading your vehicle or equipment:

1. **Prepare Vehicle/Equipment:** Ensure the vehicle or equipment to be loaded is in good working order and has sufficient power to ascend the ramps.
2. **Align and Approach:** Carefully align your vehicle or equipment with the ramps. Approach the ramps slowly and steadily.
3. **Ascend the Ramps:** Maintain a consistent, slow speed while driving or pushing the item up the ramps. Avoid sudden acceleration or braking. Ensure the weight is evenly distributed across both ramps if using two.
4. **Secure in Truck Bed/Trailer:** Once the vehicle or equipment is fully in the truck bed or on the trailer, engage parking brakes, turn off engines, and use additional tie-downs if necessary to prevent movement during transport.
5. **Remove Ramps:** After securing your load, unhook the safety straps and carefully remove the ramps. Fold them for compact storage.

KROAK

1700LBS HEAVY LOAD-BEARING

Safely Load-Bearing for Multiple Models



9lbs/0.02t

1700lbs/0.77t



Bicycles



Trolleys



Electric scooters



Motorcycles



ATV/UTV



Lawn mowers



Tractors



Pickup truck

Image: An ATV being carefully driven up the KROAK Aluminum Loading Ramps into the bed of a pickup truck, demonstrating the loading process.

SAFETY GUIDELINES

Adhering to safety guidelines is crucial for preventing accidents and ensuring the longevity of your ramps:

- **Weight Capacity:** Do not exceed the maximum load capacity of 1700 lbs for the pair of ramps (850 lbs per ramp). Overloading can lead to structural failure and injury.
- **Secure Placement:** Always ensure the ramps are securely placed on the tailgate and firmly attached with the provided safety straps before loading.
- **Stable Surface:** Use the ramps on a firm, level, and non-slippery surface. Avoid uneven ground or loose gravel.
- **Even Weight Distribution:** When loading, distribute the weight as evenly as possible across both ramps.
- **Slow and Steady:** Always load and unload vehicles slowly and with controlled movements. Avoid sudden jerks or rapid acceleration/braking.
- **Personal Protective Equipment:** Wear the provided cut-resistant gloves and other appropriate safety gear during setup and use.
- **Inspect Before Use:** Before each use, inspect the ramps for any signs of damage, cracks, or loose

components. Do not use damaged ramps.

- **No Sharp Edges/Burrs:** The ramps are designed with a smooth surface and full welded construction to prevent sharp edges or burrs. Handle with care.

MULTI-PROTECTIVE

Considerate Design, Safe to Use

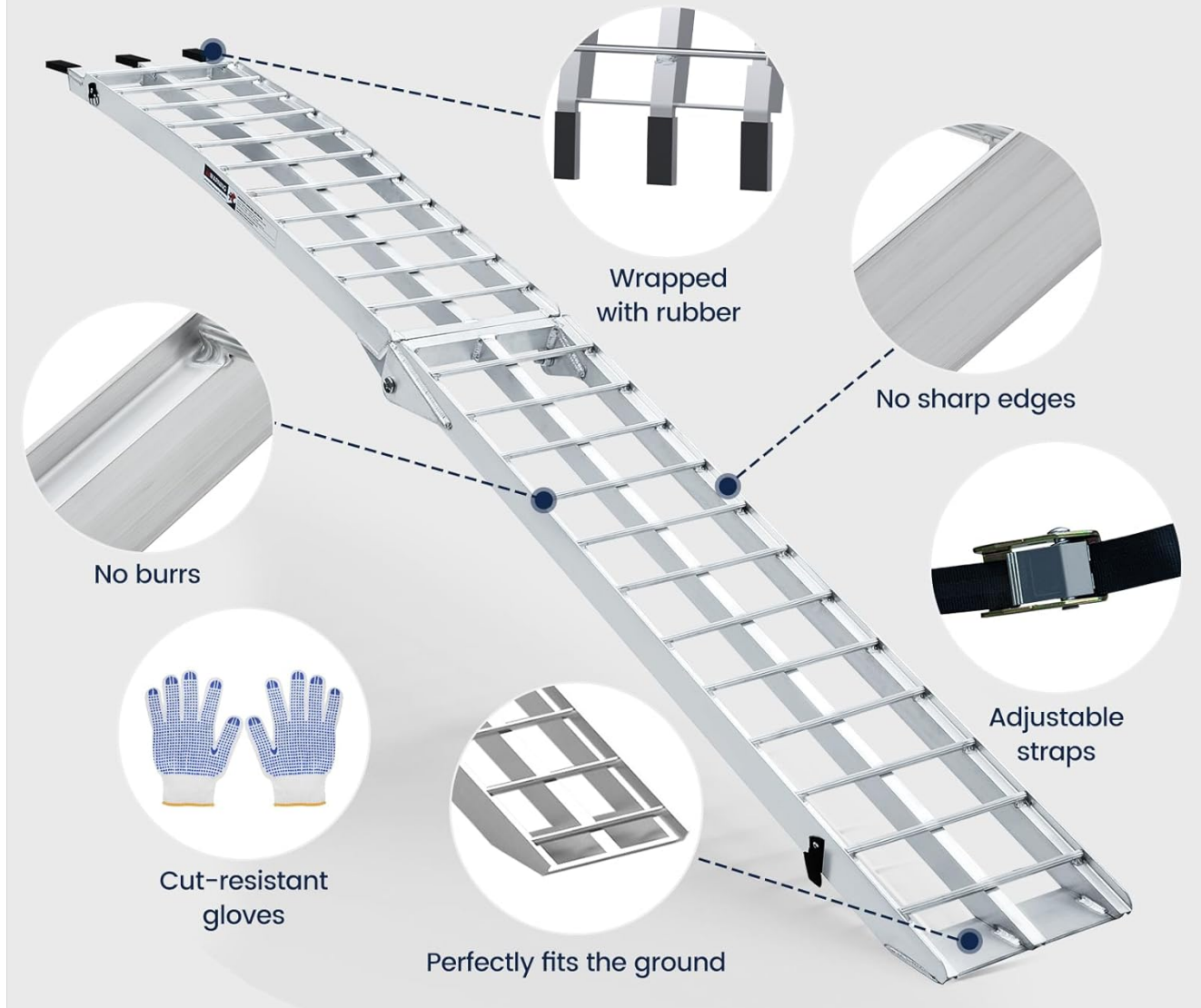


Image: An illustration highlighting the multi-protective design features of the KROAK ramps, including rubber-wrapped ends, absence of sharp edges or burrs, adjustable straps, and cut-resistant gloves.

STURDIER & SAFER

KROAK ✓



23 crossbars for increased stability

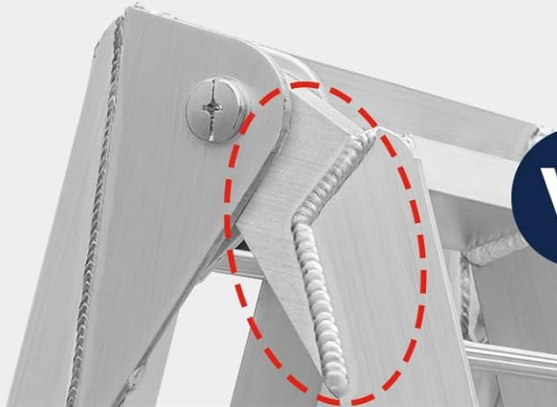
OTHER ✗



Only 21 crossbars

Vs

KROAK ✓



Full welding, sturdy and safe

OTHER ✗



Spot welding prone to fractures

Vs

***Full welding means** it welds all welding contact surface with no obvious welding gap ; **Spot welding means** it welds on the individual points of the contact surface with obvious fine seam of the interface.

Image: A comparison demonstrating the superior full welded construction of KROAK ramps for enhanced sturdiness and safety, contrasting it with spot welding found in other products.

SPECIFICATIONS

Feature	Detail
Brand	KROAK
Model Number	1700 Lbs
Material	Aluminum Alloy
Color	Silver
Product Dimensions (Unfolded, per piece)	90"L x 12"W x 12"H
Folded Dimensions (per piece)	45.8"L x 12"W x 12"H
Load Capacity (Pair)	1700 Pounds

Load Capacity (Each Ramp)	850 Pounds
Item Weight (per piece)	17 lbs (Total 33 lbs for 2 pieces)
Is Foldable	Yes
Crossbar Structure	23-grid crossbars
Maximum Use Height (from back of platform)	34.5 inches (90cm)

SPACE SAVING & PORTABLE



Image: Detailed view of the ramps, illustrating their unfolded and folded dimensions, along with material composition and weight for easy reference.

MAINTENANCE

Proper maintenance will extend the life of your KROAK Aluminum Loading Ramps:

- **Cleaning:** After each use, clean the ramps to remove dirt, mud, and debris. Use a damp cloth and mild detergent if necessary. Rinse thoroughly and dry completely to prevent corrosion.
- **Inspection:** Regularly inspect all welds, joints, and rubber components for wear, damage, or loosening. Pay

close attention to the pivoting points and the rubber-tipped fingers.

- **Storage:** Store the ramps in a dry, protected area when not in use. Their quick-folding design allows for compact storage in your garage or truck. Ensure the safety retaining clips are engaged to prevent accidental unfolding during storage or transport.
- **Lubrication:** Periodically apply a small amount of lubricant to the pivoting points to ensure smooth folding and unfolding.



Image: A person demonstrating the ease of carrying a single folded ramp, emphasizing its lightweight design and the integrated safety retaining clips for secure transport.

TROUBLESHOOTING

If you encounter any issues with your KROAK Aluminum Loading Ramps, consider the following common solutions:

- **Ramps Slipping:**
 - Ensure the rubber-tipped fingers are fully seated on the tailgate/trailer.
 - Verify that the safety straps are securely attached and tightened.
 - Check that the ground surface is level and free of loose debris.

- **Difficulty Folding/Unfolding:**

- Inspect the pivoting joints for any obstructions or debris.
- Apply a small amount of lubricant to the joints if they feel stiff.

- **Ramps Seem Unstable:**





- Confirm that the ramps are placed on a solid, level surface.
- Re-check the security of the safety straps.
- Ensure the load is within the specified weight capacity and evenly distributed.



For issues not covered here, please refer to the Warranty and Support section.

WARRANTY AND SUPPORT

KROAK is committed to providing high-quality products and excellent customer service. If you encounter any problems or have questions regarding your Aluminum Loading Ramps, please do not hesitate to contact us. You can reach our customer support team by email. We are dedicated to ensuring your satisfaction and will provide a prompt and helpful response to any inquiries or concerns. Thank you for choosing KROAK. Your understanding and support are greatly appreciated.

Related Documents - 1700 Lbs

	<p>Kroak TB2 Diesel Heater User Manual Kroak.store</p> <p>Official user manual for the Kroak TB2 Diesel Heater, a 6L All-In-One Bluetooth diesel heating unit. Find operating instructions, safety guidelines, and support information.</p>
	<p>Kroak Car Refrigerator Use Manual</p> <p>This manual provides comprehensive instructions for the Kroak Car Refrigerator, covering its features, operation, safety precautions, troubleshooting, and maintenance. It details how to use the device with both DC and AC power, its dual-zone temperature control, and the accompanying mobile app for enhanced functionality.</p>
	<p>KROAK Car Refrigerator Use Manual - LD30/40/50 Series</p> <p>Comprehensive user manual for the KROAK Car Refrigerator (LD30/40/50 Series). Learn about product functions, safety, operation, troubleshooting, and app control.</p>
	<p>Kroak W1 Dieselheizung Handy-SE 8KW Portable User Manual</p> <p>User manual for the Kroak W1 Dieselheizung Handy-SE, an 8KW portable diesel heater. This guide provides essential information on operation, safety, maintenance, and troubleshooting for Kroak products.</p>

	<p>KROAK Car Refrigerator Use Manual</p> <p>This manual provides detailed instructions for the KROAK Car Refrigerator, covering operation, safety precautions, troubleshooting, and app control. It details features like dual-zone cooling, variable frequency compressor, and low voltage protection.</p>
	<p>KROAK Car Refrigerator Use Manual: LDW35/45/55 Series</p> <p>Comprehensive use manual for the KROAK Car Refrigerator (LDW35/45/55 Series), detailing features, operation, safety, troubleshooting, and app control for optimal portable cooling.</p>