

Manuals+

[Q & A](#) | [Deep Search](#) | [Upload](#)

manuals.plus /

> [VIZIO](#) /

> [VIZIO 5.1 Soundbar SE User Manual](#)

VIZIO SV510X-0806

VIZIO 5.1 Soundbar SE User Manual

Model: SV510X-0806

INTRODUCTION

This manual provides essential information for setting up, operating, maintaining, and troubleshooting your VIZIO 5.1 Soundbar SE. Please read it thoroughly before use to ensure optimal performance and safety.

WHAT'S IN THE BOX

Verify that all components are present before proceeding with the setup.

- Soundbar
- Compact Wireless Subwoofer
- 2 Surround Speakers
- HDMI Cable
- Power Cord
- QuickFit mounting screws for compatible VIZIO TVs
- Soundbar remote control (sold separately)

5.1 SE System includes



33" Soundbar



1 Compact
Wireless Subwoofer



2 Surround Speakers



HDMI® eARC cable for TV connection
and essential speaker cables



QuickFit* mounting screws
for compatible VIZIO TVs

Soundbar remote control not included. Control your soundbar settings with the VIZIO app or TV remote.
*QuickFit™, only from VIZIO, lets you attach your VIZIO soundbar directly to the bottom of compatible VIZIO TVs.

Image: All components included in the VIZIO 5.1 Soundbar SE package, including the soundbar, wireless subwoofer, two surround speakers, HDMI cable, power cord, and QuickFit mounting screws.

SETUP

1. Placement

For optimal sound experience, place the soundbar centered below your TV. The wireless subwoofer can be placed anywhere in the room, ideally near the soundbar. The two surround speakers connect to the subwoofer and should be placed behind the listening area, one on each side.

360° of entertainment

Feel surround sound like never before

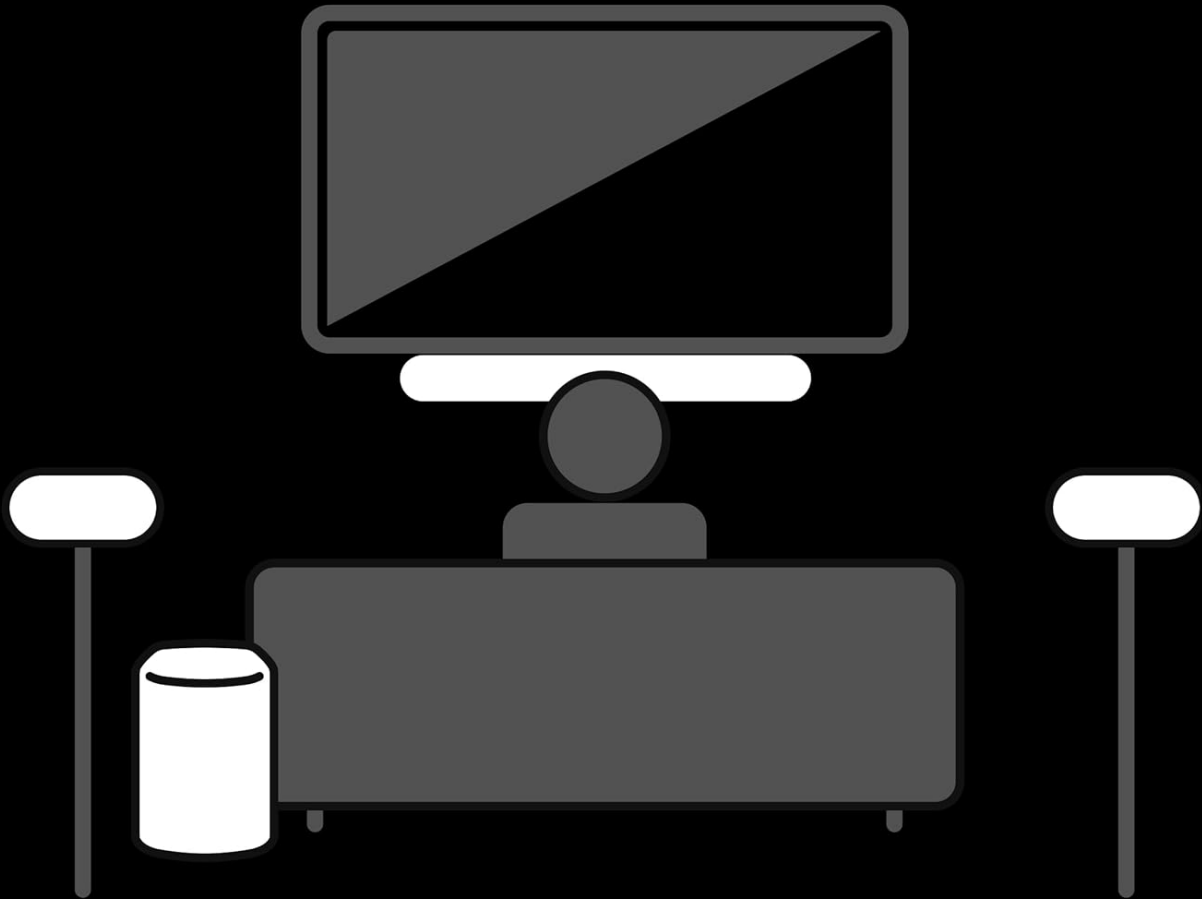


Image: A diagram illustrating the recommended setup for the 5.1 sound system, with the soundbar in front of the TV, the subwoofer to the side, and two surround speakers positioned behind the viewer for a 360-degree audio experience.

2. Connections

Connect the soundbar to your TV using the included HDMI eARC cable for the best audio quality and TV remote control integration. Plug the power cords into the soundbar and subwoofer, then connect the surround speakers to the subwoofer.

1. Connect the HDMI eARC cable from the soundbar's HDMI (eARC) port to your TV's HDMI (eARC) port.
2. Plug the soundbar's power cord into an electrical outlet.
3. Plug the wireless subwoofer's power cord into an electrical outlet.
4. Connect the two surround speakers to the corresponding left and right audio outputs on the back of the wireless subwoofer.

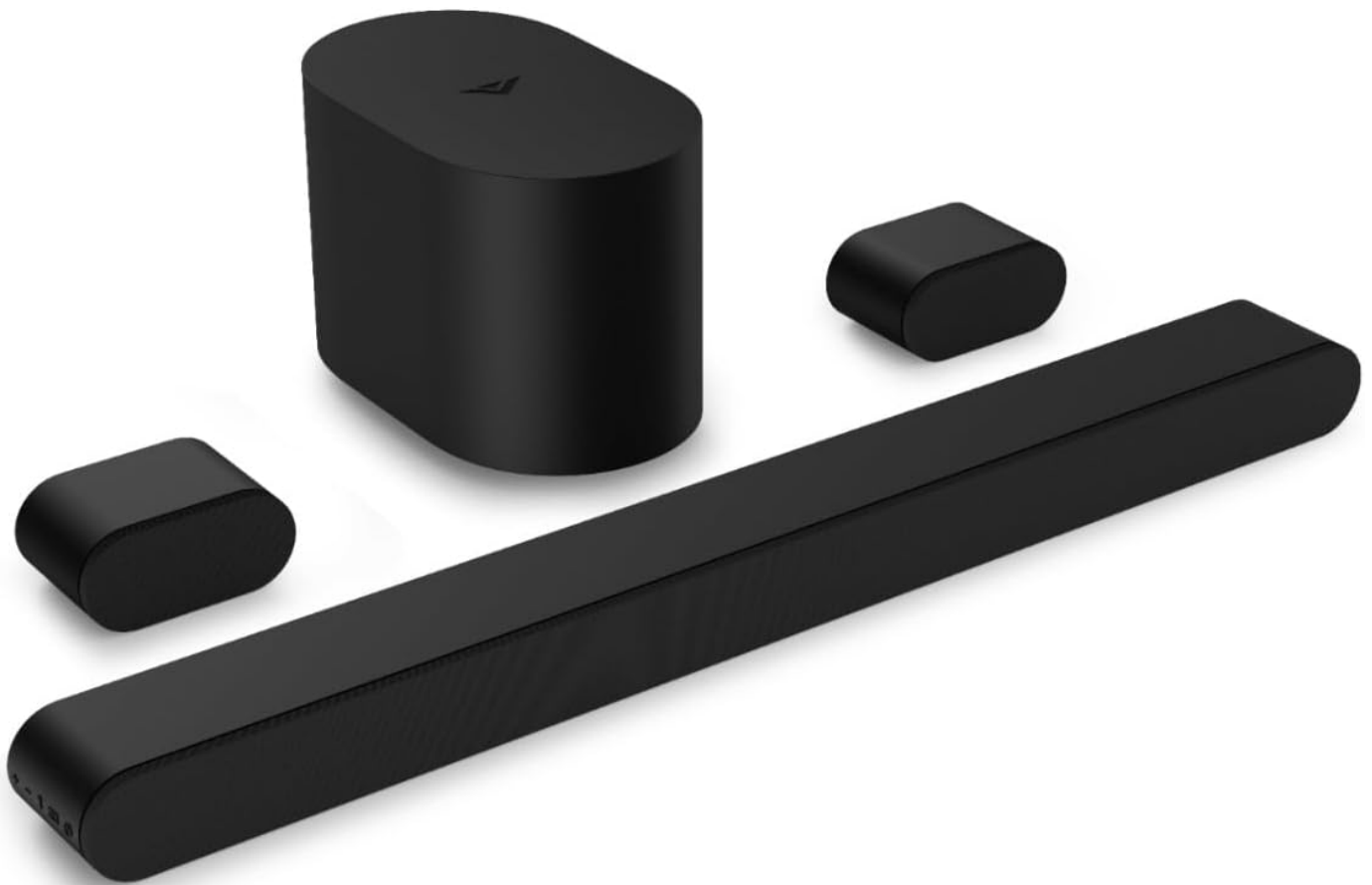


Image: A close-up view of the rear of the VIZIO soundbar, highlighting the HDMI (eARC) port for TV connection and a USB port for service.

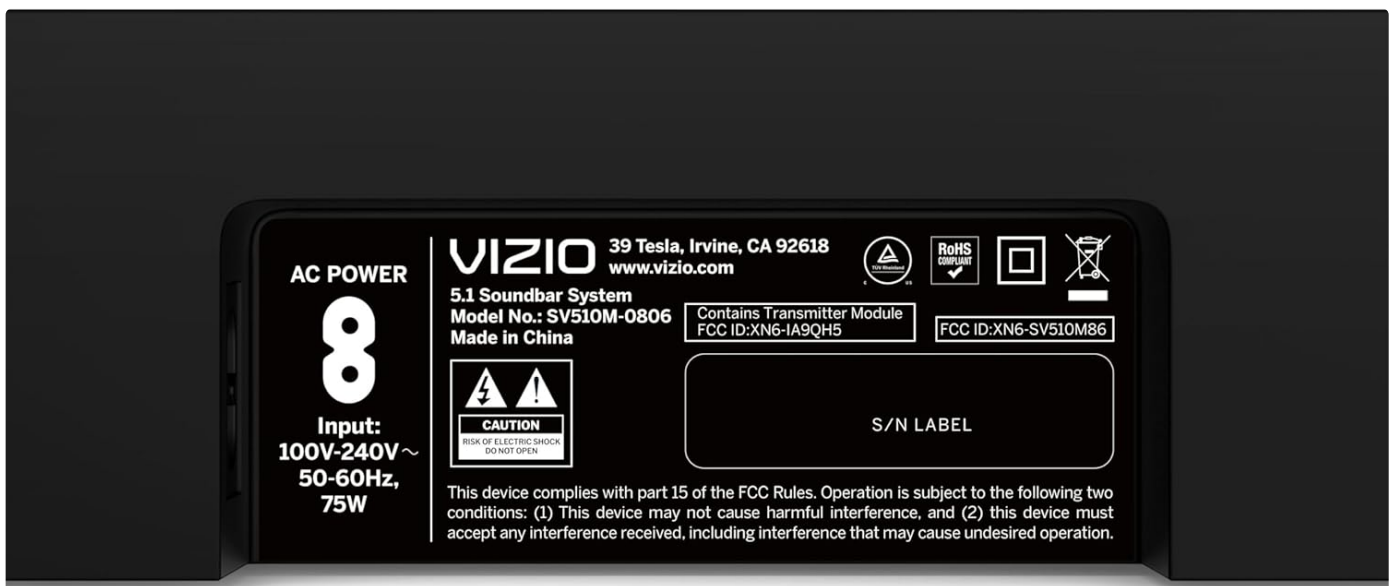


Image: The back panel of the VIZIO wireless subwoofer, showing the AC IN power input and the left and right audio outputs for connecting the surround speakers.

3. QuickFit™ Installation (Optional)

If you have a compatible VIZIO TV, you can use the QuickFit™ mounting screws to seamlessly attach the soundbar directly to your TV, eliminating gaps and simplifying setup.

1. Twist the QuickFit™ screws into the designated mounting points on your compatible VIZIO TV.
2. Plug the HDMI cable into the soundbar and TV.
3. Snap the soundbar onto the QuickFit™ screws.



Pair effortlessly.

Easily stream music, podcasts, and more

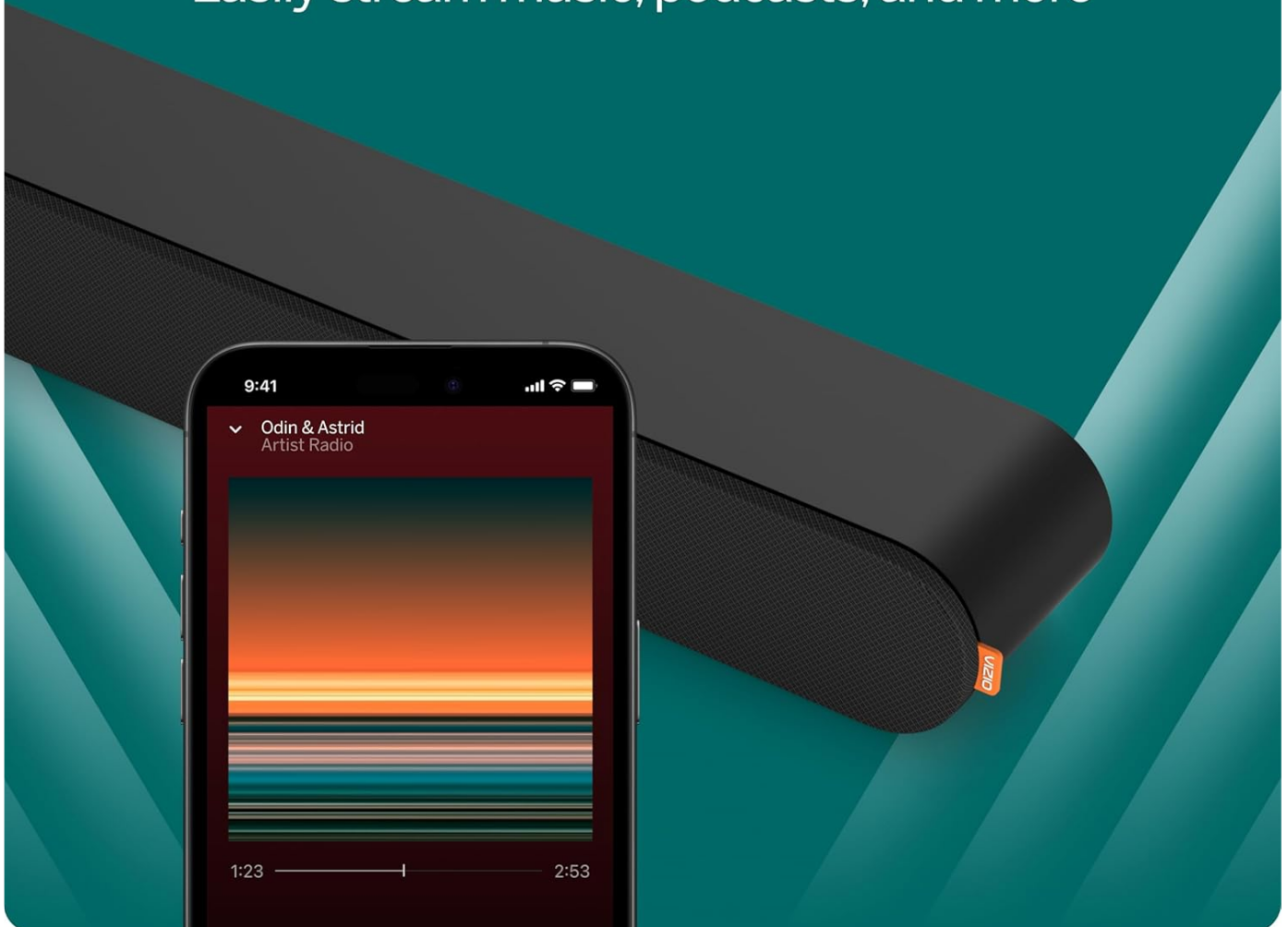


Image: A visual guide demonstrating the three simple steps for QuickFit™ installation: twisting in the screws, plugging in the HDMI cable, and snapping the soundbar onto the TV.

OPERATING YOUR SOUNDBAR

Powering On/Off

Press the Power button on the soundbar or use your TV remote (if connected via HDMI eARC) to turn the soundbar on or off.

Volume Control

Adjust the volume using your TV remote (if connected via HDMI eARC) or the volume buttons on the soundbar itself.

Bluetooth Pairing

To stream audio from a Bluetooth device:

1. Press the Bluetooth button on the soundbar or select Bluetooth input via the VIZIO Mobile app.
2. On your mobile device, search for and select "VIZIO SV510X-08" (or similar model name) in the Bluetooth settings.
3. Once paired, audio from your device will play through the soundbar.

Your sound. Your way.

Access audio controls with the VIZIO app

VIZIO app and VIZIO Account required for soundbar control, settings, and system updates.
Soundbar remote control not included.

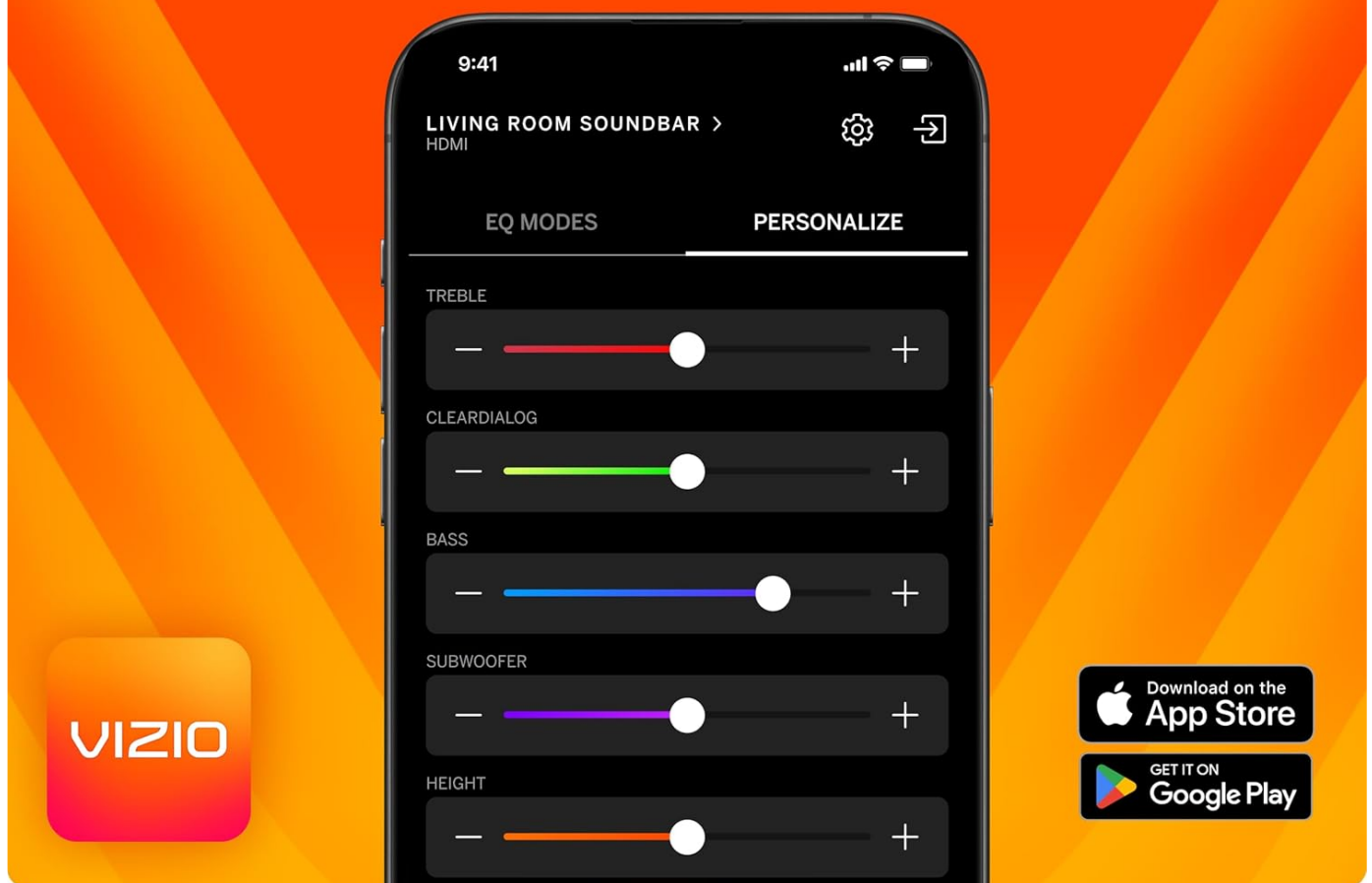


Image: A smartphone screen showing a music playback interface, indicating a successful Bluetooth connection to the VIZIO soundbar, allowing for effortless music streaming.

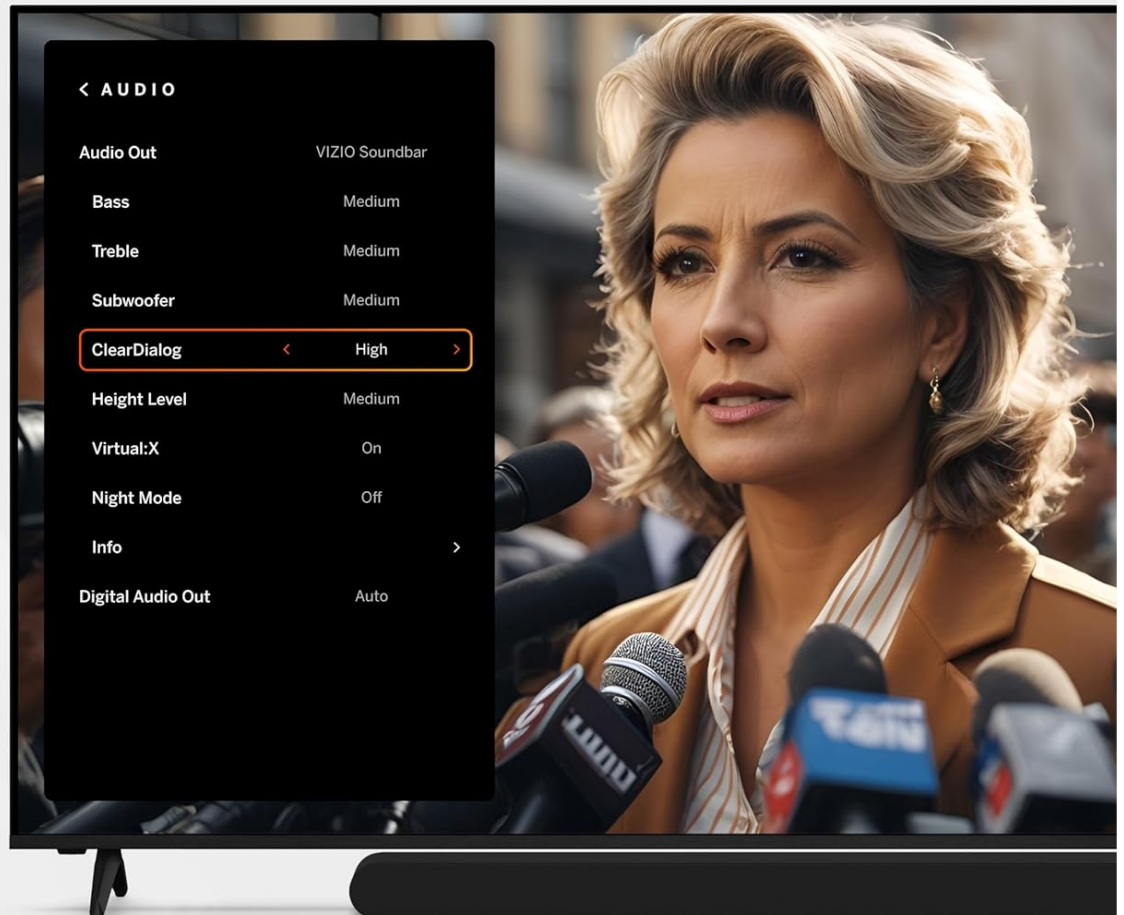
Using the VIZIO Mobile App

The VIZIO Mobile app provides comprehensive control over your soundbar, including advanced settings, EQ modes, and system updates. A VIZIO Account is required to use the app.

- Download the VIZIO Mobile app from the App Store (iOS) or Google Play Store (Android).
- Follow the in-app instructions to connect and register your soundbar.
- Adjust audio settings such as Treble, Bass, Subwoofer, ClearDialog, and Height Level directly from the app.

Hear every word

Say goodbye to missed words and muffled conversations with the ClearDialog setting.



Screen image simulated. VIZIO TV required to enable ClearDialog.

Image: The VIZIO Mobile app interface displayed on a smartphone, showcasing various audio controls and equalization settings like Treble, ClearDialog, Bass, Subwoofer, and Height, allowing users to personalize their sound experience.

Dolby Atmos & DTS:X

This soundbar supports Dolby Atmos and DTS:X, providing an immersive, multi-dimensional audio experience when playing compatible content.

Cinema quality sound

Step into a world of immersive entertainment.



 Dolby Atmos

 DTS:X

Image: A couple enjoying a movie on a large screen TV, with the VIZIO soundbar providing immersive audio, highlighted by Dolby Atmos and DTS:X logos, suggesting a cinema-quality sound experience.

MAINTENANCE

To ensure the longevity and optimal performance of your VIZIO Soundbar SE, follow these maintenance guidelines:

- **Cleaning:** Use a soft, dry, lint-free cloth to clean the surfaces of the soundbar, subwoofer, and surround speakers. Do not use liquid cleaners, aerosols, or abrasive materials.
- **Ventilation:** Ensure proper ventilation around all components. Do not block any ventilation openings.
- **Power:** Disconnect the power cords from the electrical outlet if the unit will be unused for an extended period.
- **Temperature:** Avoid exposing the unit to extreme temperatures, direct sunlight, or high humidity.

TROUBLESHOOTING

Problem	Solution
No power	Ensure power cords are securely connected to the soundbar, subwoofer, and a working electrical outlet.
No sound	Verify the HDMI eARC cable is correctly connected to both the soundbar and TV. Check the TV's audio output settings to ensure it's set to external speakers or HDMI ARC/eARC. Increase the volume on both the soundbar and TV. Ensure the correct input is selected on the soundbar.
Subwoofer or surround speakers not working	Ensure the subwoofer is powered on and paired with the soundbar (it should pair automatically). Verify the surround speakers are correctly wired to the subwoofer's output ports.
Bluetooth pairing issues	Ensure the soundbar is in Bluetooth pairing mode. Disable and re-enable Bluetooth on your mobile device. Move your device closer to the soundbar.
Cannot control with TV remote	Ensure the soundbar is connected to the TV's HDMI eARC port and that HDMI CEC (Consumer Electronics Control) is enabled on your TV. (CEC may be named differently by TV manufacturers, e.g., Anynet+, Bravia Sync, Simplink).

SPECIFICATIONS

Feature	Detail
Model Name	SV510X-0806
Sound System	5.1 Channel
Audio Technologies	Dolby Atmos, DTS:X
Connectivity	HDMI eARC, Bluetooth
Soundbar Dimensions (DxWxH)	3.23"D x 33"W x 2.28"H
Speaker Maximum Output Power	180 Watts
Wireless Communication	Bluetooth
Subwoofer Connectivity	Wireless (to soundbar), Wired (to surround speakers)
Control Method	VIZIO Mobile App, TV Remote (via eARC)
Mounting Type	Wall Mount, QuickFit (Compatible with select VIZIO TVs)

WARRANTY INFORMATION

This product comes with a Full Warranty. For detailed warranty terms and conditions, please refer to the documentation

included with your purchase or visit the official VIZIO support website.

SUPPORT

For further assistance, product registration, or to download the latest user guides, please visit the VIZIO support website or contact customer support.

- **VIZIO Support Website:** support.VIZIO.com
- **Customer Support Phone:** 844-254-8087