

[Manuals.plus](#) /

> [YHTAUTO](#) /

> YHTAUTO 3 Inch Chrome Running Boards Instruction Manual for Jeep Grand Cherokee L (2021-2024)

YHTAUTO YHTSBAR0053

YHTAUTO 3 Inch Chrome Running Boards Instruction Manual

For Jeep Grand Cherokee L (2021-2024) SUV

1. INTRODUCTION

This manual provides detailed instructions for the installation, operation, and maintenance of your YHTAUTO 3 Inch Chrome Running Boards. These running boards are designed to fit Jeep Grand Cherokee L SUV models from 2021 to 2024, enhancing vehicle accessibility and appearance.



Image 1.1: YHTAUTO 3 Inch Chrome Running Boards with included mounting hardware.

Product Compatibility

- **Vehicle:** Jeep Grand Cherokee L SUV
- **Model Years:** 2021, 2022, 2023, 2024 (WL Series)



Compatible with **Jeep** Models:

Fits	2021-2022	Grand Cherokee L	WL Series
Fits	2023-2024	Grand Cherokee L	WL Series

Image 1.2: Visual confirmation of compatibility with Jeep Grand Cherokee L models.

2. PRODUCT OVERVIEW

The YHTAUTO running boards are engineered for durability and functionality, providing a secure step for vehicle entry and exit.

Key Features:

- **Material:** High-grade 304 stainless steel, compliant with ASTM standards.
- **Capacity:** Supports up to 400 lbs.
- **Design:** 3-inch wide steps with injection-molded polymer pads for enhanced grip.
- **Finish:** Chrome (S/S 304 Polished Coating) for wear and corrosion resistance.
- **Durability:** Tested for 10,000 dynamic load trials, 24 hours static load inspection, and 720 hours Xenon lamp aging monitoring.



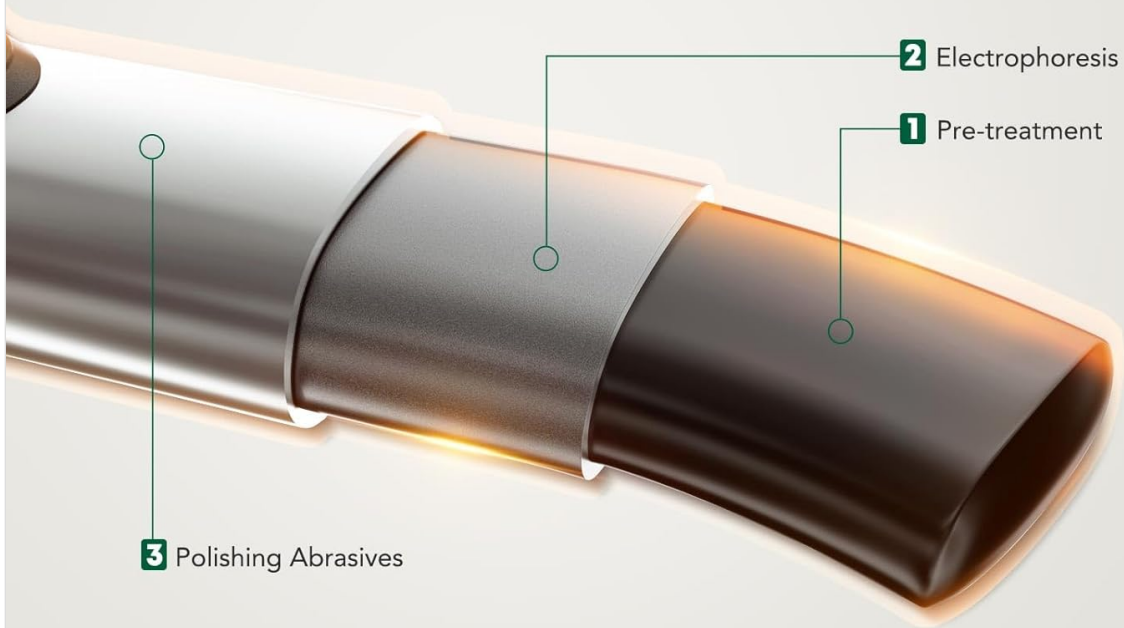
Injection-Molded Polymer Pads

- Smooth Riding
- Easy Entry&Exit

Image 2.1: The 3-inch wide step surface with injection-molded polymer pads for secure footing.

Triple Surface Process Unleash Ride Radiance

Harmonized CNC ergonomics and mechanics



Semi-Gloss Black Power Coating



S/S 304 Polished Coating



Textured Black Powder Coating

Image 2.2: Illustration of the triple surface process: pre-treatment, electrophoresis, and polishing abrasives, resulting in a durable S/S 304 Polished Coating.



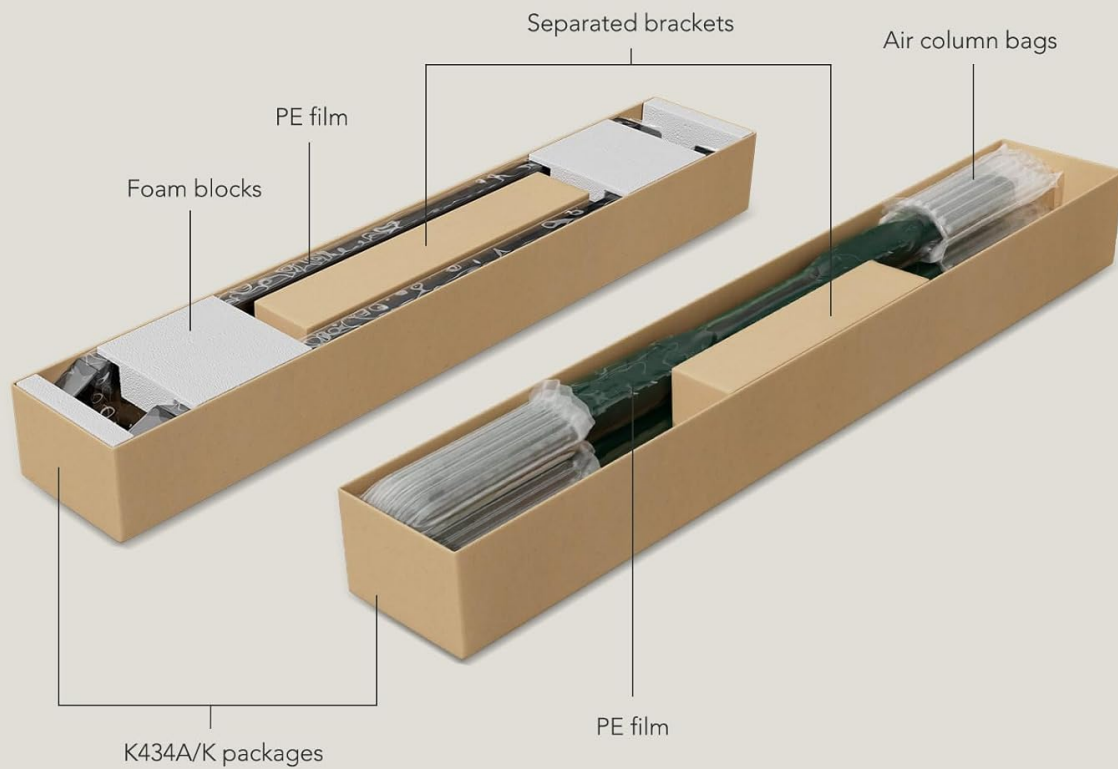
Image 2.3: Demonstration of the running board's strength, tested for over 400 lbs capacity and extensive dynamic and static trials.

3. SETUP AND INSTALLATION

The YHTAUTO running boards are designed for quick and simple installation. The package includes all necessary brackets, nuts, bolts, and instructions. If your vehicle has pre-existing mounting holes, no additional drilling is required.

Package Contents:

- Running Boards (2)
- Mounting Brackets
- Screws
- Flat Washers
- Installation Instruction Guide



WRAP IT RIGHT KEEP IT TIGHT



Sturdy Hardware



Secure Packaging and Shipping



Strong K434A/K Cardboard



Superior Full Flap Box

Image 3.1: The packaging includes separated brackets and protective materials to prevent damage during transport.

Installation Steps:

1. **Align and Loosely Fasten Brackets:** Position the brackets to the vehicle's frame and loosely attach them using the provided hardware.
2. **Mount Running Boards:** Click the running board onto the brackets.
3. **Tighten All Bolts:** Fully tighten all bolts to the specified torque as indicated in the detailed instruction guide.
4. **Check Stability:** Verify door clearance and test the stability of the installed running boards.



FEAR NO SCRATCHES

Adaptable to different regions, climatic conditions and complex road conditions

Image 3.2: A mechanic demonstrating the installation process of the running boards.

Important Notes:

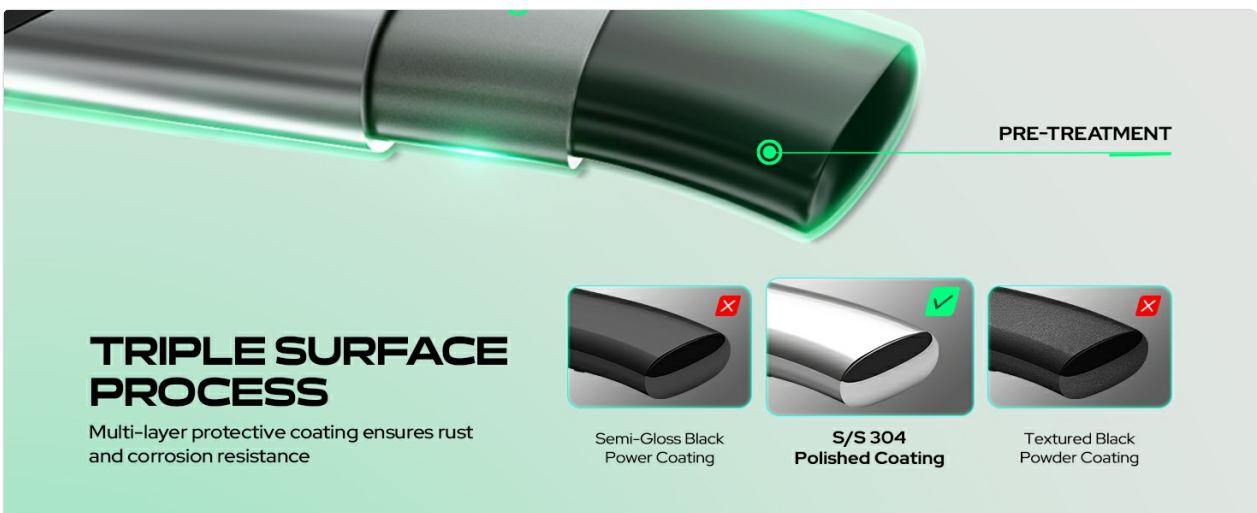
- Ensure the product is designed to suit your vehicle's make, model, year, and configuration.
- During installation, perform a preliminary fastening first. After positioning and calibration, tighten all bolts securely.
- Always refer to your vehicle's owner's manual for any specific precautions or warnings before installation. If you are unsure or lack the necessary experience, consult a qualified technician.

4. OPERATING AND USAGE

These running boards provide a convenient and safe step for accessing your vehicle.

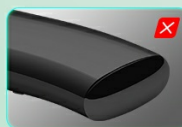
Enhanced Convenience:

- **Easy Entry and Exit:** The 3-inch wide steps offer a stable platform, making it easier for passengers, including children and the elderly, to enter and exit taller vehicles.
- **Roof Access:** Provides additional steps for stable footing when loading and unloading items from the vehicle's roof, especially useful for roof racks.
- **Anti-Slip Surface:** The textured polymer pads ensure safety in various weather conditions, including rain and snow.

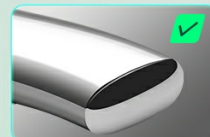


TRIPLE SURFACE PROCESS

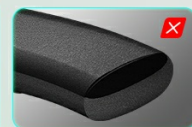
Multi-layer protective coating ensures rust and corrosion resistance



Semi-Gloss Black Power Coating



S/S 304 Polished Coating



Textured Black Powder Coating

Image 4.1: The running board facilitates easy and safe entry into the vehicle.



Image 4.2: The running board provides convenient access to the vehicle's roof for loading or unloading.

5. MAINTENANCE

The YHTAUTO running boards are designed for minimal maintenance due to their high-quality materials and finish.

- **Cleaning:** Regularly clean the running boards with mild soap and water to remove dirt and road grime. Avoid abrasive cleaners or harsh chemicals that could damage the polished finish.
- **Inspection:** Periodically check all mounting bolts and brackets to ensure they remain tight and secure. Retighten if necessary.
- **Corrosion Resistance:** The 304 stainless steel construction and polished coating provide excellent resistance to rust and corrosion, even in challenging weather conditions.



Image 5.1: The running boards are built to withstand various environmental conditions, resisting scratches and corrosion.

6. TROUBLESHOOTING

If you encounter any issues with your running boards, consider the following:

- **Loose Boards:** If the running boards feel loose, re-check all mounting bolts and ensure they are tightened to the manufacturer's specifications.
- **Unusual Noises:** Inspect for any loose components or contact points between the running board and the vehicle frame. Ensure proper clearance.

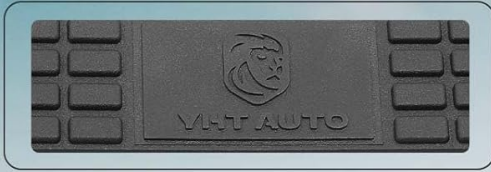
- **Difficulty Installing:** Double-check the fitment for your specific vehicle model and year. Refer to the detailed installation guide provided with the product. If issues persist, professional installation is recommended.

7. SPECIFICATIONS

Feature	Detail
Brand	YHTAUTO
Model Number	YHTSBAR0053
Material	304 Stainless Steel
Color	Chrome
Exterior Finish	Polished
Step Width	3 Inches
Mounting Type	Rocker Panel Mount
Weight	Approximately 36.3 pounds (per pair)
Load Capacity	Up to 400 lbs
Vehicle Service Type	Passenger Car, Truck

Premium Product Metrics

Step Pads



Length	Cab Length
Mounting	Rocker Panel Mount
Materials	304 Stainless Steel
Design	Round Bent Ends



Image 7.1: Summary of key product metrics and design features.

8. WARRANTY AND SUPPORT

For information regarding product warranty, please refer to the warranty card included with your purchase or visit the official YHTAUTO website. For technical support or assistance with installation, please contact YHTAUTO customer service through their official channels.