

## TPSPAD TPS-W156-ER

# TPSPAD 15.6-inch Laptop User Manual

Model: TPS-W156-ER | Brand: TPSPAD

## 1. INTRODUCTION AND OVERVIEW

This manual provides essential information for the proper setup, operation, and maintenance of your TPSPAD 15.6-inch Laptop. Please read this manual thoroughly before using your device to ensure optimal performance and longevity.

The TPSPAD laptop is a classic Windows portable computer designed for everyday tasks, featuring a 15.6-inch Full HD IPS display and an Intel Celeron J4105 Quad-Core processor.



Figure 1.1: TPSPAD 15.6-inch Laptop showcasing its main features and design.

## 2. PRODUCT FEATURES

Your TPSPAD laptop comes equipped with several key features designed for efficiency and user experience:

- **QWERTY Keyboard:** This laptop features a QWERTY keyboard layout. Please note this distinction, as it is not an AZERTY keyboard.
- **High Configuration:** Powered by an Intel Celeron J4105 Quad-Core processor with a 4M speed cache, reaching up to 2.50 GHz (base frequency 1.7 GHz, up to 3.4 GHz burst).
- **Large Storage:** Includes 4GB LPDDR4 RAM and 256GB ROM. It also supports a 256GB TF expansion card for additional storage.
- **FHD Screen:** Features a 15.6-inch IPS display with a Full HD resolution of 1920 x 1080 pixels.
- **Battery and Size:** Equipped with a 7.6V / 5000mAh lithium battery. The laptop's dimensions are 14.56 x 9.44 x 0.82 inches, and it weighs only 3.85 pounds, making it highly portable.

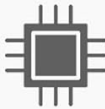


**Assicurati che il laptop funziona senza  
intoppi e abbia prestazioni eccezionali**

Figure 2.1: Laptop displaying multiple applications, highlighting its memory and storage capabilities.



  
Windows 10

  
J4105

  
15.6 inch

  
Dual-Band WIFI

  
256GB

  
1980\*1080 FHD

Figure 2.2: The laptop's 15.6-inch Full HD IPS display in a typical usage environment.

### 3. SETUP

Follow these steps to set up your new TPSPAD laptop:

1. **Unboxing:** Carefully remove the laptop and all accessories from the packaging.
2. **Initial Charge:** Before first use, connect the power adapter to the 12V DC Charge Hole on the laptop and plug it into a power outlet. Allow the battery to charge fully.
3. **Power On:** Press the power button located on the keyboard to turn on the laptop.
4. **Windows Setup:** Follow the on-screen instructions to complete the Windows 10 Home initial setup, including language, region, network connection, and user account creation.
5. **Connecting Peripherals:** Use the available USB 3.0 ports to connect external devices such as a mouse, external keyboard, or USB drives.
6. **External Display Connection:** To connect an external monitor, use the HDMI port. Ensure your external display is powered on and set to the correct input source.

**12V DC Charge Hole**

**USB 3.0**

**HDMI**



**MicroSD socket**

**Headset jack**

**USB 3.0**

Figure 3.1: Detailed view of the laptop's input/output ports for connectivity.



# Collega facilmente l'HDMI al tuo laptop



Figure 3.2: Connecting the laptop to an external display via HDMI for extended workspace.

## 4. OPERATING INSTRUCTIONS

This section covers basic operation of your TPSPAD laptop:

- **Keyboard Usage:** The laptop features a full-size QWERTY keyboard. Familiarize yourself with the key layout, including function keys (F1-F12) which often control brightness, volume, and other system settings when pressed with the 'Fn' key.
- **Touchpad:** The integrated touchpad supports multi-touch gestures for navigation. Tap to click, use two fingers to scroll, and pinch to zoom.
- **Connecting to Wi-Fi:** Access network settings in Windows to connect to available Wi-Fi networks. The laptop supports 802.11n wireless technology.
- **Bluetooth Connectivity:** Enable Bluetooth in Windows settings to pair with compatible devices such as headphones, speakers, or smartphones.
- **Audio:** The laptop is equipped with dual speakers for clear audio output. Connect headphones or external

speakers via the headset jack for private listening or enhanced sound.



Figure 4.1: Laptop in use, demonstrating its dual speakers and Full HD display during a video conference.

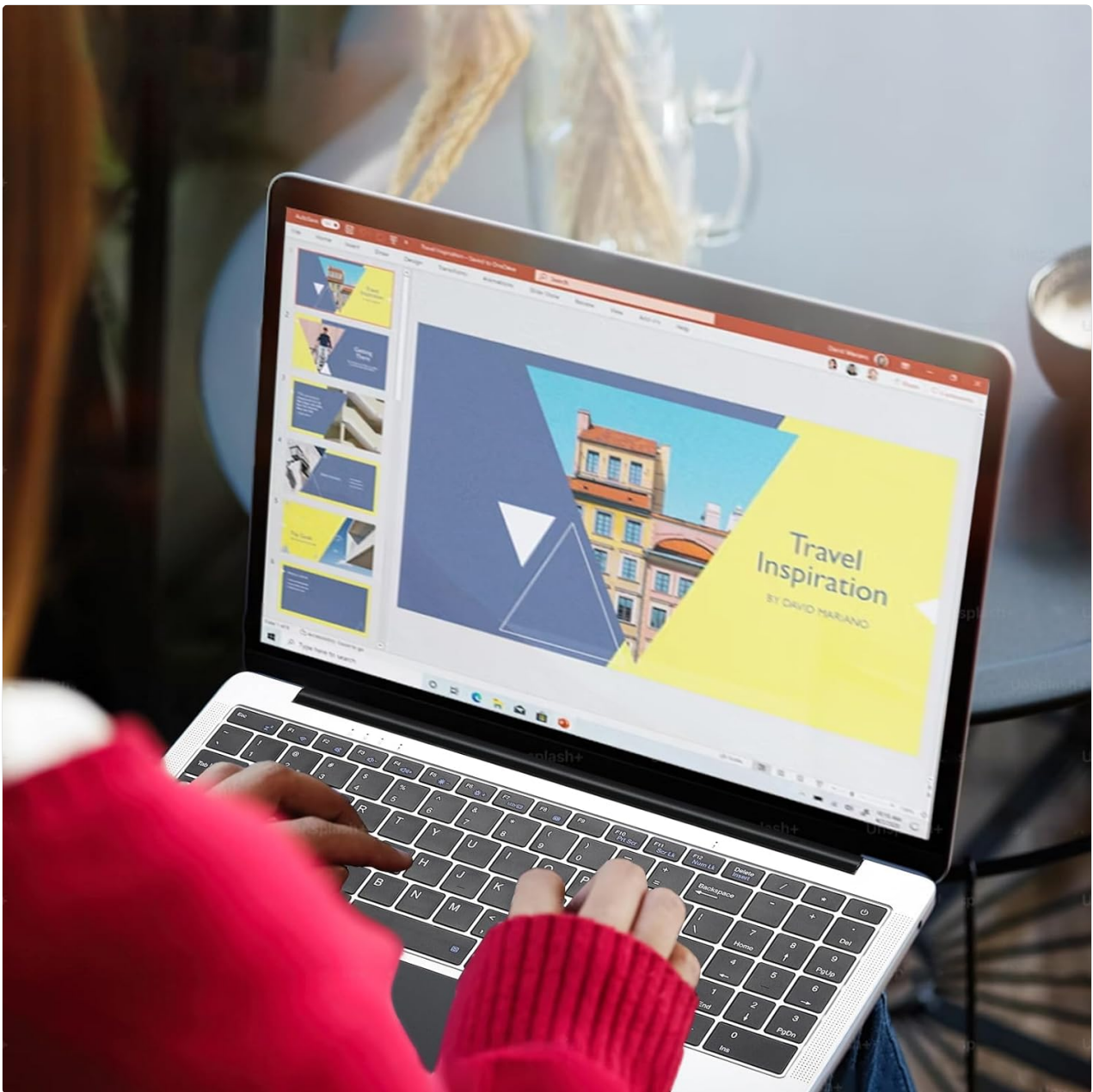


Figure 4.2: User interacting with the QWERTY keyboard while working on a presentation.

## 5. MAINTENANCE

Proper maintenance ensures the longevity and optimal performance of your laptop:

- **Cleaning:** Use a soft, lint-free cloth to clean the screen and exterior. For stubborn smudges, dampen the cloth slightly with water or a screen cleaner. Avoid harsh chemicals.
- **Battery Care:** To prolong battery life, avoid extreme temperatures. It is recommended to occasionally discharge the battery completely and then fully recharge it.
- **Software Updates:** Regularly check for and install Windows updates to ensure your system has the latest security patches and performance improvements.
- **Storage Management:** Periodically clean up unnecessary files and applications to free up storage space and maintain system speed.
- **Ventilation:** Ensure the laptop's ventilation openings are not blocked to prevent overheating. Use the laptop on a hard, flat surface.





Figure 5.1: Underside of the laptop, illustrating the ventilation area.

## 6. TROUBLESHOOTING

If you encounter issues with your TPSPAD laptop, refer to the following common solutions:

- **Laptop Not Turning On:** Ensure the power adapter is securely connected and the battery is charged. Try holding the power button for 10-15 seconds to perform a hard reset.
- **No Display:** If the laptop powers on but the screen remains black, try connecting an external monitor to check if the issue is with the laptop's display.
- **Slow Performance:** Close unnecessary applications, check for malware, and ensure you have sufficient

free storage space. Consider running Windows Disk Cleanup.

- **Wi-Fi Connectivity Issues:** Restart your router and the laptop. Check if Wi-Fi is enabled in Windows settings and ensure drivers are up to date.
- **Keyboard/Touchpad Not Responding:** Restart the laptop. If the issue persists, check for driver updates in Device Manager.

For further assistance, please refer to the 'Service' section or contact customer support.

## 7. SPECIFICATIONS

Detailed technical specifications for the TPSPAD 15.6-inch Laptop (Model: TPS-W156-ER):

Feature	Specification
Brand	TPSPAD
Item Model Number	J4105
Series	TPS-W156-ER
Color	Silver
Operating System	Windows 10 Home
Keyboard Description	Ergonomic (QWERTY)
Processor Brand	Intel
Processor Type	Quad-Core (Celeron J4105)
Number of Cores	4
RAM	4 GB LPDDR4
Installed RAM Size	6 GB (Note: Product description states 4GB, specification lists 6GB. Please verify with seller if critical.)
Maximum Memory	256 GB (for expansion card)
Hard Drive Size	256 GB
Hard Drive Technology	SSD (M.2 SATA)
Screen Size	15.6 Inches
Screen Resolution	1920 x 1080 pixels (Full HD IPS)
Graphics Chipset Brand	Intel
Graphics Card Description	Integrated (Intel UHD Graphics)
Graphics Card RAM Type	DDR Memory
Wireless Technology Type	802.11n (Dual-Band Wi-Fi)

Feature	Specification
Bluetooth Compatible	Yes
Number of USB 3.0 Ports	2
Connector Type	Bluetooth, HDMI, USB, Wi-Fi
Software Included	Windows 10 Home
Special Features	Portable
Battery(ies)	1 Lithium-polymer - included (7.6V / 5000mAh)
Package Dimensions	41.7 x 29 x 8.7 cm; 1.8 kilograms
Manufacturer	TPSPAD
Date First Available on Amazon.com.be	January 5, 2024



## 8. WARRANTY AND SUPPORT

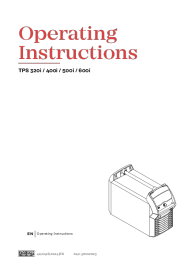



Information regarding specific warranty periods or spare parts availability is not provided in the product details. For warranty claims, technical support, or any questions, please contact TPSPAD customer service directly.

As stated by the manufacturer: "If you have any questions, please email us in time. We will reply within 24 hours."

Please retain your proof of purchase for any warranty-related inquiries.

## Related Documents - TPS-W156-ER

 <p>Light Bee diagnostic identification chart</p>	<p><a href="#">Surron Light Bee Diagnostic Identification Chart</a></p> <p>A comprehensive diagnostic identification chart for the Surron Light Bee electric motorcycle, detailing LED flash codes, diagnostic explanations, diagnostic codes, and recommended solutions for troubleshooting.</p>
 <p>PV-ezRACK SolarRoof Code-Compliant Planning and Installation Guide V1.0 (New Zealand) Complying with AS/NZS 1170.2:2021</p>	<p><a href="#">PV-ezRACK SolarRoof: Code-Compliant Planning and Installation Guide (New Zealand)</a></p> <p>Comprehensive guide for planning and installing the PV-ezRACK SolarRoof system in New Zealand, ensuring compliance with AS/NZS 1170.2:2021 standards. Covers site assessment, tools, components, and detailed installation procedures for various roof types.</p>

 <p><b>Operating Instructions</b> TPS 320i / 400i / 500i / 600i</p>	<p><a href="#">Fronius TPS 320i/400i/500i/600i Operating Instructions</a></p> <p>Comprehensive operating instructions for Fronius TPS 320i, 400i, 500i, and 600i welding power sources. Covers safety, installation, operation, welding processes (MIG/MAG, TIG, MMA), process parameters, and troubleshooting.</p>
 <p><b>PV-ezRACK</b></p> <p><b>SolarRoof Pro</b> Solar Mounting Systems</p>	<p><a href="#">PV-ezRACK SolarRoof Pro Mounting System - Product Catalog</a></p> <p>Comprehensive product catalog for the PV-ezRACK SolarRoof Pro solar mounting system, detailing components and applications for tiled roofs and metal roofs.</p>
 <p><b>PV-ezRACK</b></p> <p><b>SolarRoof</b> Code-Compliant Planning and Installation Guide V 4.4 Compliant with AS/NZS1170.2:2011 AMDT 2:2016</p>	<p><a href="#">PV-ezRack SolarRoof: Code-Compliant Planning and Installation Guide V 4.4</a></p> <p>Comprehensive guide for planning and installing the PV-ezRack SolarRoof system. Covers wind region analysis, terrain category, installation instructions, and certification for pitched and flat roofs. Compliant with AS/NZS1170.2:2011 AMDT 2:2016.</p>
 <p><b>rightway</b> <b>ER TABLETS AND CAPSULES</b> Prior Authorization Policy and Procedure</p>	<p><a href="#">Rightway Hydrocodone Bitartrate ER Prior Authorization Policy and Procedure</a></p> <p>Official policy and procedure document from Rightway detailing the prior authorization process, criteria, and limitations for Hydrocodone Bitartrate ER tablets and capsules.</p>