

[Manuals.plus](#) /

› [Lucky Doug](#) /

› Lucky Doug STEM Building Projects Model Truck Set - User Manual

Lucky Doug 8804

Lucky Doug STEM Building Projects Model Truck Set

MODEL: 8804

User Instruction Manual

1. Product Overview

The Lucky Doug STEM Building Projects Model Truck Set (Model 8804) is a comprehensive construction kit designed to engage children aged 8-12 in STEM learning. This set allows users to assemble a detailed model truck using durable metal parts, fostering creativity, fine motor skills, and logical thinking.



Image: The Lucky Doug Model Truck Set, showcasing the assembled truck and its packaging.

Once assembled, the model truck measures over 4.7 inches high, 9.9 inches long, and 5.1 inches wide, making it a substantial and impressive display piece. It features a realistic army green color, two seats, four movable wheels, a steering wheel, and a spare tire, closely mimicking a real truck.

MODEL TRUCK SET

A VALUABLE COLLECTION AND SOUVENIR
FOR MODEL TRUCK ENTHUSIASTS

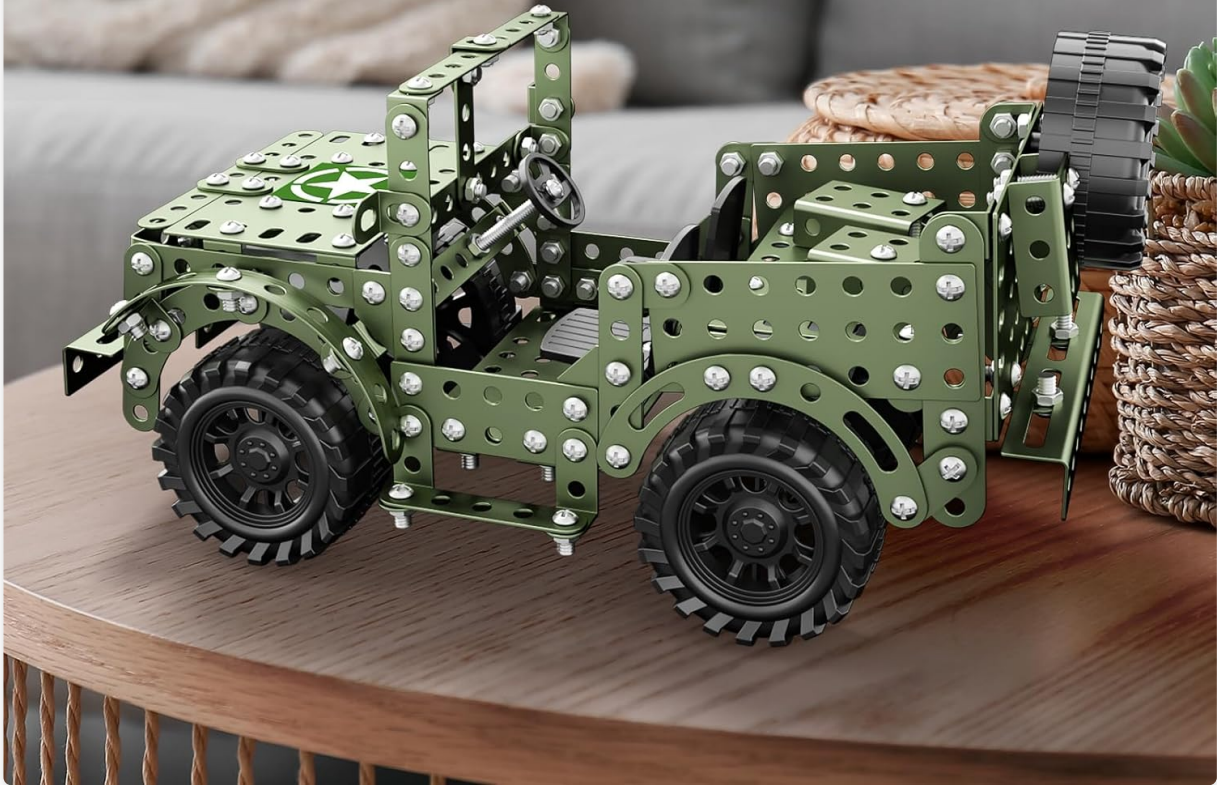


Image: The fully assembled model truck, ready for display or play.

2. What's in the Box

Your Lucky Doug STEM Building Projects Model Truck Set includes all necessary components for assembly. Please verify that all parts are present before beginning construction.

- **391 Metal Parts and Pieces:** Various metal plates, beams, and connectors, all designed for durability and precision assembly.
- **Nuts and Bolts:** Essential fasteners for connecting the metal components.
- **Small Screwdriver:** A tool specifically designed for the included screws.
- **Wrench:** A tool for tightening the nuts and bolts.
- **Instruction Manual:** A detailed, step-by-step guide with diagrams to facilitate assembly.

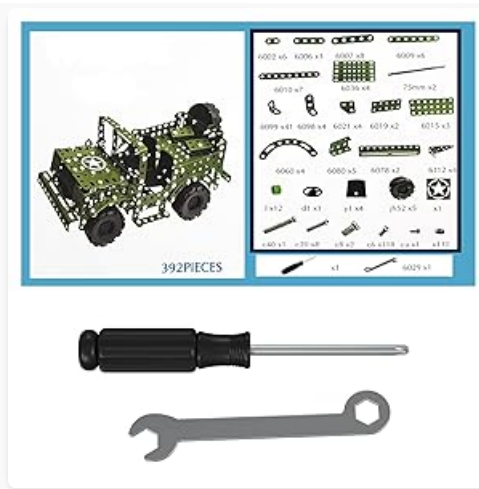


Image: An overview of the included parts, tools, and the instruction manual.

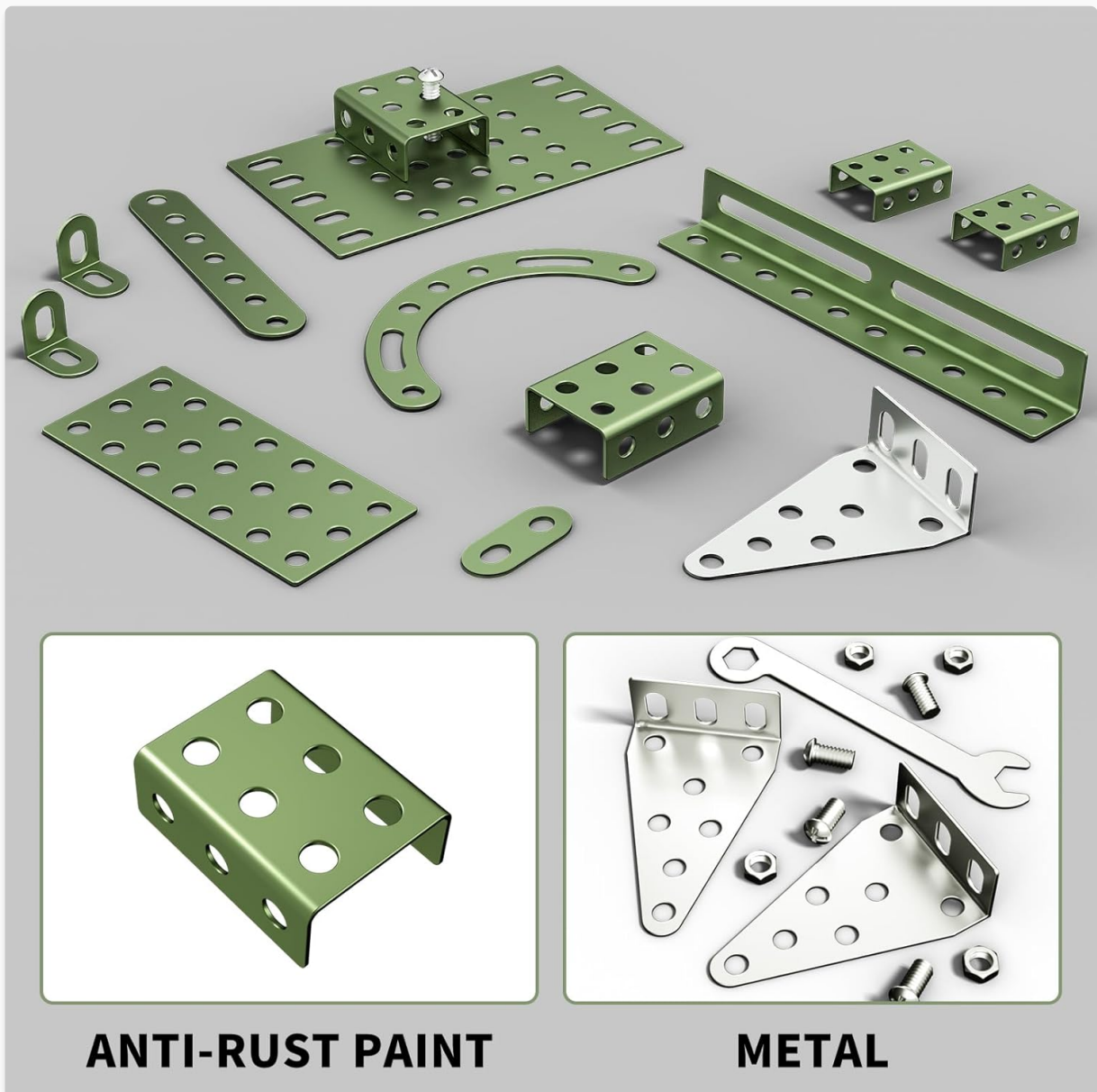


Image: Detail of the durable metal components, featuring anti-rust paint for longevity.

3. Assembly Instructions (Setup)

Assembly of the Lucky Doug Model Truck is a rewarding process that typically takes approximately 5 hours. Follow the detailed instructions provided in the manual carefully. It is recommended for children

aged 8-16, with adult assistance for younger builders or those new to metal construction kits.

1. **Preparation:** Unpack all components and lay them out on a clean, flat surface. Familiarize yourself with the different types of metal pieces, nuts, bolts, and the provided tools (screwdriver and wrench).
2. **Follow the Manual:** Refer to the included instruction manual. It contains clear diagrams for each step of the assembly process. Pay close attention to the orientation of pieces and the correct placement of nuts and bolts.
3. **Secure Connections:** Use the provided screwdriver and wrench to securely fasten all nuts and bolts. Ensure connections are tight to prevent parts from loosening during play.
4. **Systematic Building:** The manual guides you through building sections of the truck. Complete each section before moving to the next. This systematic approach helps manage the complexity of the build.
5. **Patience is Key:** Some steps may require careful alignment and dexterity. If a step seems difficult, re-examine the diagram and try different angles. Do not force parts together.
6. **Check Progress:** Periodically compare your progress with the diagrams in the manual to ensure accuracy.



Image: A child engaged in the assembly process, demonstrating the hands-on nature of the kit.



Image: Family members collaborating on the assembly, highlighting the educational and bonding experience.

4. Operating the Model Truck

Once fully assembled, your Lucky Doug Model Truck is ready for display or imaginative play. While it is a static model designed for construction and display, its features allow for interactive engagement.

- **Movable Wheels:** The four main wheels are designed to rotate, allowing the truck to be pushed or pulled across smooth surfaces.
- **Steering Wheel:** The steering wheel inside the cabin can be turned, adding to the realistic feel of the model.
- **Display Piece:** The robust metal construction and detailed design make it an excellent collectible or decorative item for enthusiasts.

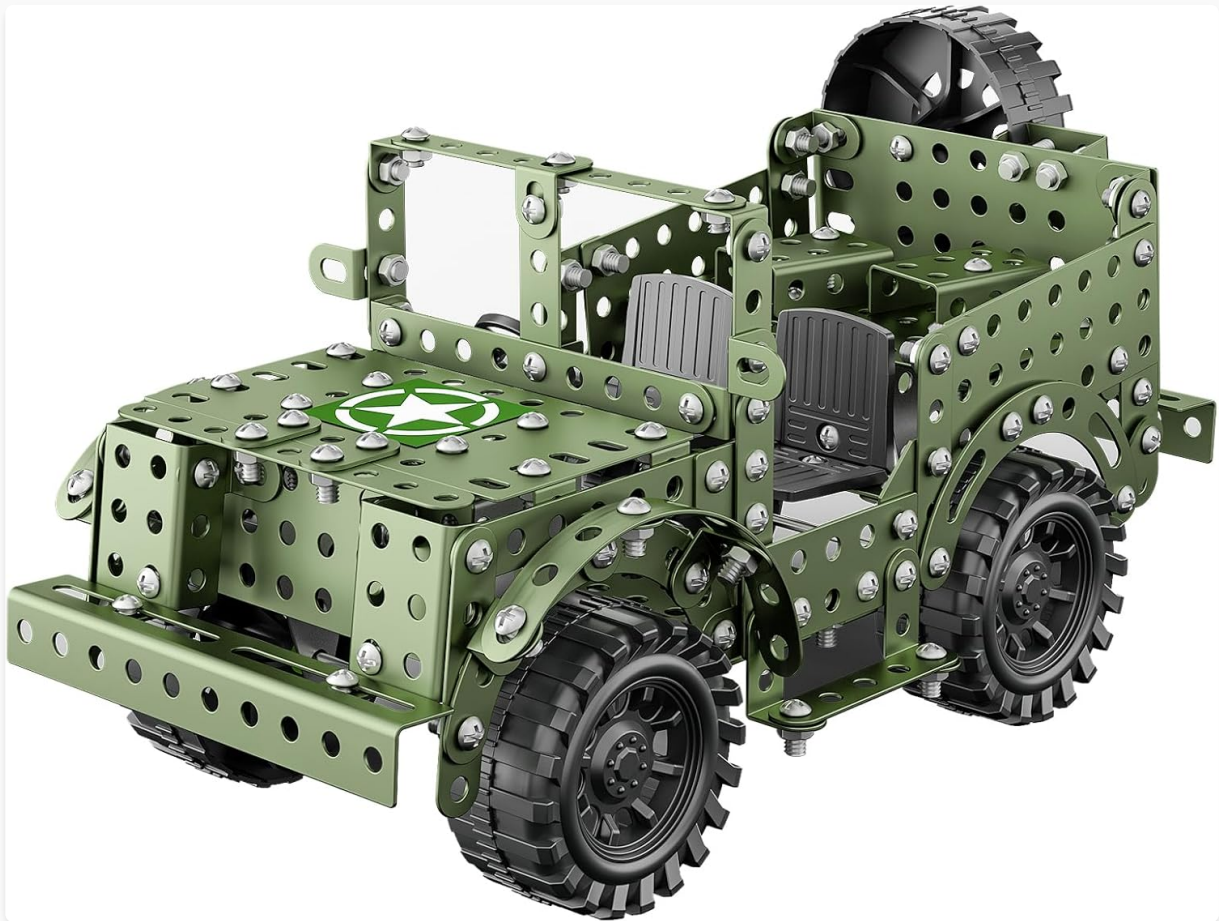


Image: The completed model truck from a front perspective, highlighting its detailed design.



Image: The model truck in a dynamic pose, illustrating its movable components.

5. Maintenance

To ensure the longevity and appearance of your Lucky Doug Model Truck, follow these simple maintenance guidelines:

- **Cleaning:** Wipe the model with a soft, dry cloth to remove dust. For stubborn dirt, a slightly damp cloth can be used, followed immediately by a dry cloth to prevent moisture buildup.
- **Avoid Harsh Chemicals:** Do not use abrasive cleaners, solvents, or strong detergents, as these can damage the paint and metal finish.
- **Check Fasteners:** Periodically inspect all nuts and bolts. Due to play or movement, they may loosen over time. Use the provided wrench and screwdriver to re-tighten any loose connections.

- **Storage:** Store the model in a dry environment away from direct sunlight and extreme temperatures to prevent material degradation.

6. Troubleshooting

Here are solutions to common issues you might encounter during assembly or use:

Issue	Solution
Difficulty Following Instructions: Diagrams seem unclear or steps are hard to visualize.	Take your time with each step. Examine the diagrams closely from different angles. If possible, have an adult or experienced builder assist. Sometimes, laying out the exact pieces for a step can help clarify.
Parts Don't Fit: Pieces don't align or seem too tight.	Double-check the part numbers and orientation against the instruction manual. Ensure you are using the correct size nuts and bolts. Do not force parts; gentle pressure and correct alignment are key.
Nuts/Bolts Loosen: Connections become loose after assembly or during play.	This is common with metal construction toys. Regularly re-tighten all nuts and bolts using the provided tools. Ensure they are snug but do not overtighten, which could strip the threads.
Missing Parts: A component appears to be missing from the box.	Carefully re-check all packaging materials and the assembly area. Small parts can be easily overlooked. If still missing, contact Lucky Doug customer support (see Section 8).

7. Specifications

Product Dimensions (Assembled): Approximately 4.7 inches (H) x 9.9 inches (L) x 5.1 inches (W)

Item Weight: 1.74 pounds

Recommended Age: 6 - 16 years (Manufacturer recommended)

Material: Durable Metal

Number of Parts: 391

Model Number: 8804

Manufacturer: AOLE (Brand: Lucky Doug)

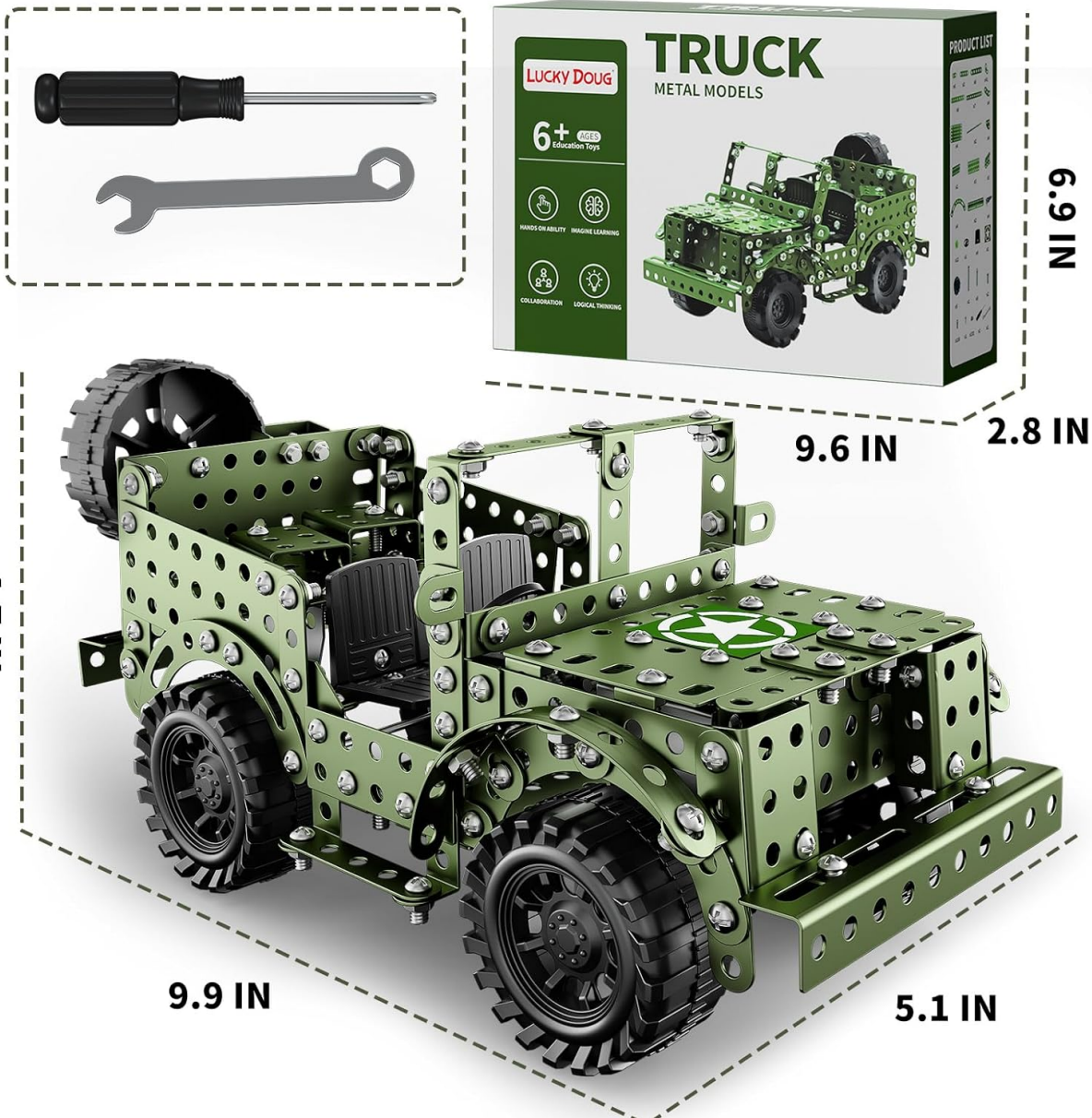


Image: Visual representation of the model truck's dimensions.

8. Warranty and Support

Lucky Doug is committed to providing high-quality products and customer satisfaction. For any questions, concerns, or assistance with missing parts or assembly, please contact Lucky Doug customer support.

While specific warranty details are not provided in this manual, standard consumer rights apply. For direct support, please refer to the contact information provided on the product packaging or visit the official Lucky Doug store page on Amazon:

[Visit the Lucky Doug Store on Amazon](#)

Please have your product model number (8804) and purchase details ready when contacting support.