

Manuals.plus /

› owltron /

› owltron Indoor Security Camera C3 User Manual

owltron LF-C3t

owltron Indoor Security Camera C3 User Manual

Model: LF-C3t

INTRODUCTION

Thank you for choosing the owltron Indoor Security Camera C3. This manual provides essential information for setting up, operating, and maintaining your new security camera. Please read it thoroughly before use and keep it for future reference.

The owltron C3 Indoor Security Camera offers 4MP 2K resolution, dual-band 2.4GHz & 5G WiFi connectivity, 2-way audio, night vision, motion/baby crying detection, and compatibility with Alexa. It is designed to help you monitor your home, baby, elders, or pets with ease and security.

PACKAGE CONTENTS

Ensure all items are present in your package:

- owltron Indoor Security Camera C3 (2 units)
- Power Adapters (2 units)
- USB Power Cables (2 units)
- Mounting Accessories (screws, wall anchors, double-sided adhesive stickers)
- User Manual

Image: Contents of the Owltron C3 camera package, showing two cameras, power adapters, cables, and mounting hardware.

SETUP GUIDE

1. Download the Owltron App

1. Scan the QR code provided in the manual or on the product packaging to download the "littlelf smart" app from the App Store or Google Play.

2. Register for an account and log in.

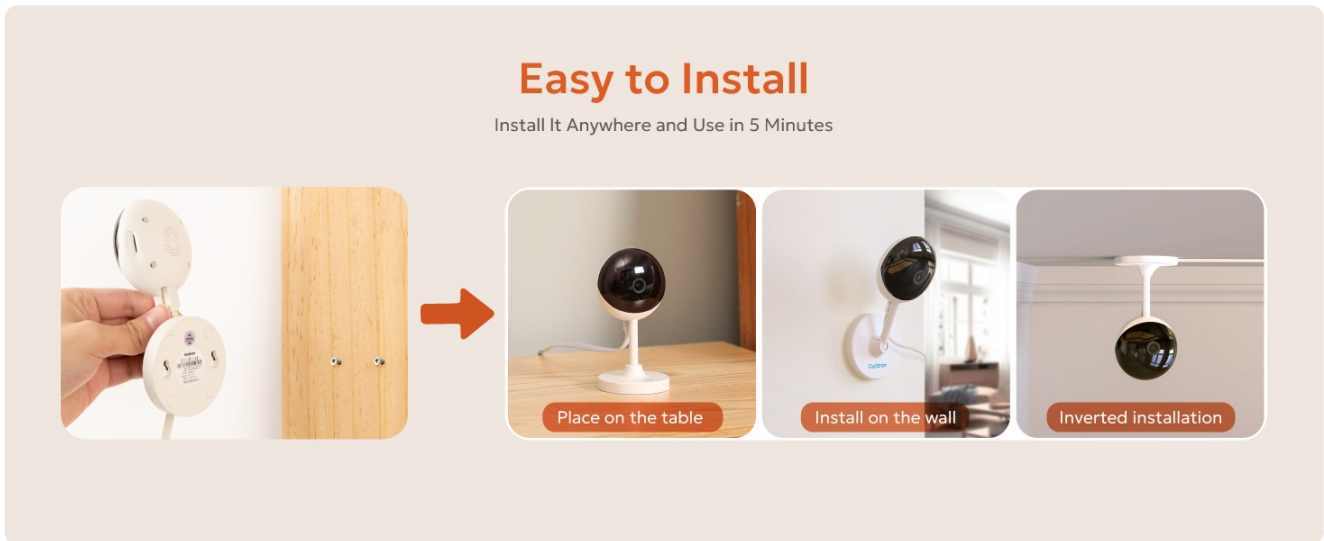


Image: Visual guide for downloading the Owltron app and initial setup steps.

2. Power On the Camera

- Connect the USB power cable to the camera and the power adapter.
- Plug the power adapter into a wall outlet. The camera's indicator light will start blinking red.

3. Add Device to App

1. In the app, tap "Add Device" and select "Smart Camera" or "Cam T1" (refer to the app for specific model selection).
2. Follow the on-screen prompts to connect the camera to your 2.4GHz or 5GHz Wi-Fi network.
3. The app will display a QR code. Hold your phone with the QR code 15-20 cm (6-8 inches) in front of the camera lens until you hear a prompt from the camera.
4. Once connected, the indicator light will turn solid blue or green, and the camera will appear in your app.

Your browser does not support the video tag.

Video: A user demonstrates the unboxing and setup process for the Owltron C3 camera, including connecting power and pairing with the mobile app via QR code.

4. Mounting Options

The camera can be placed on a flat surface or mounted to a wall or ceiling. Ensure a stable Wi-Fi connection at the chosen location.

- **Tabletop Placement:** Simply place the camera on any flat surface.
- **Wall/Ceiling Mount:** Use the provided mounting accessories (screws and wall anchors) or the double-sided adhesive stickers. The camera base has keyholes for screw mounting.

Easy to Install

Install It Anywhere and Use in 5 Minutes

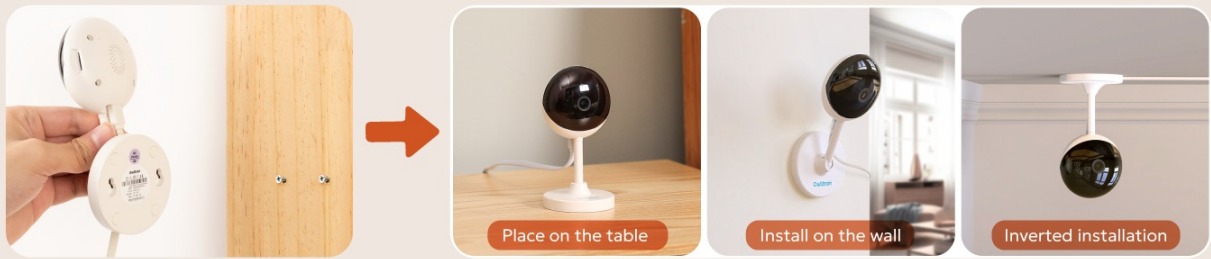


Image: Illustration of how to install the Owltron C3 camera on a table, wall, or inverted on a ceiling.

OPERATING INSTRUCTIONS

Live View and Playback

- Open the Owltron app and select your camera to view the live feed.
- Use the playback feature to review recorded footage from your SD card or cloud storage.

2.4GHz & 5GHz dual-band connection



Image: A smartphone displaying a live feed from the Owltron C3 camera, showing a child and a dog in a living room.

Two-Way Audio

- Tap the microphone icon in the app to speak through the camera's built-in speaker.
- Listen to audio from the camera's environment through your phone.

Super Night Vision

Field of view reaches 33 feet with no visible glare,
making the night clearer



Image: An Owltron C3 camera on a table, with a dog nearby, illustrating the two-way audio feature.


Motion and Cry Detection


- Enable motion and baby crying detection in the app settings.
- Receive instant push notifications on your phone when activity is detected.
- Activate the smart siren feature in the app to deter intruders.

Motion Detection & Cry Detection

Easily master the abnormal situations at home



 **Baby cry detected** now
Cam T1 has detected baby crying

 **Motion Detected** now
Cam T1 has detected motion

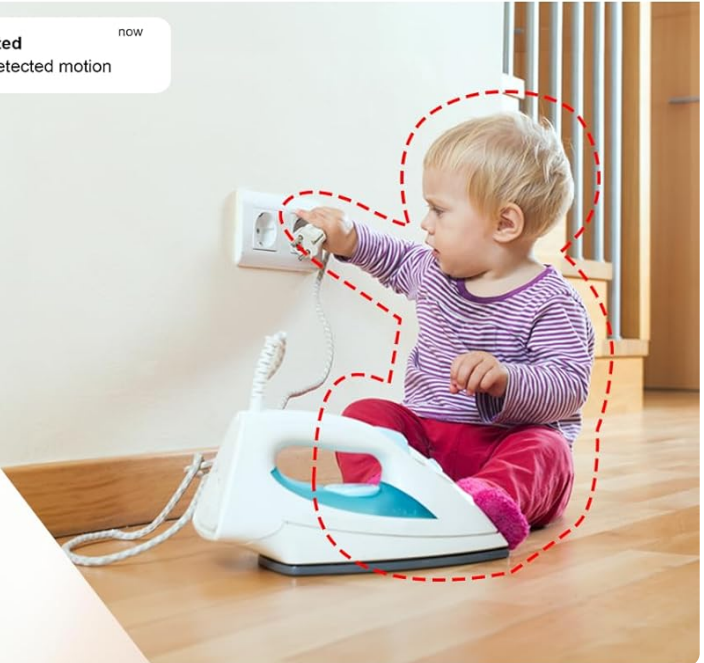


Image: An Owltron C3 camera detecting motion and a baby crying, with corresponding notifications displayed on a smartphone.

Night Vision

- The camera automatically switches to night vision in low-light conditions.
- View clear black and white footage up to 33 feet in complete darkness.

Two-Way Audio

Communicate with your pets at any time.

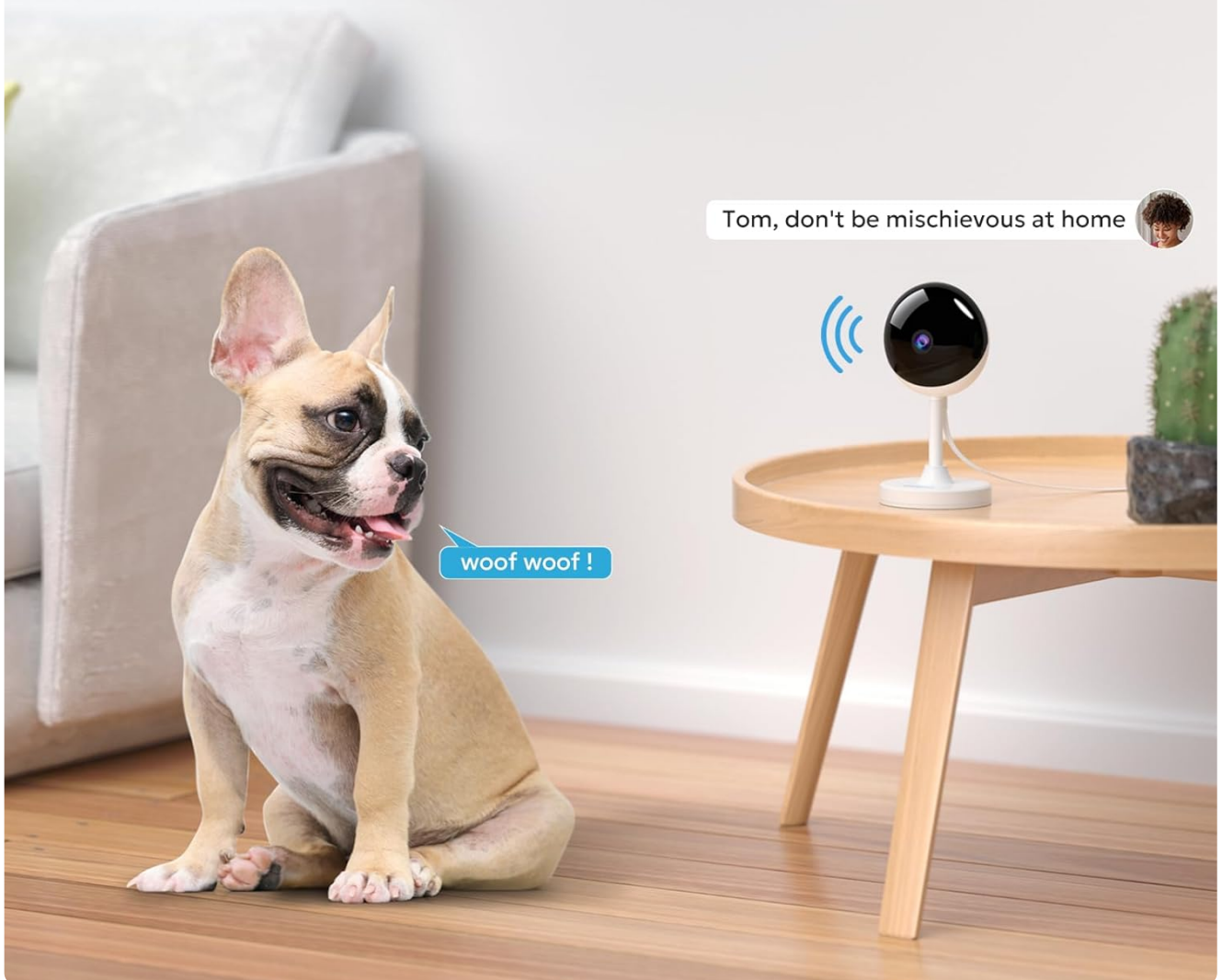


Image: A woman on a bed looking at her smartphone, which displays a night vision view from the Owltron C3 camera of a child sleeping.

Alexa Compatibility

- Connect your owltron camera to Alexa devices for voice control.
- Use commands like "Alexa, show me the baby room" to view live feeds.

Compatible with Alexa & Google home

Use voice Control and integrate the camera into other smart devices like Alexa and Google Home.

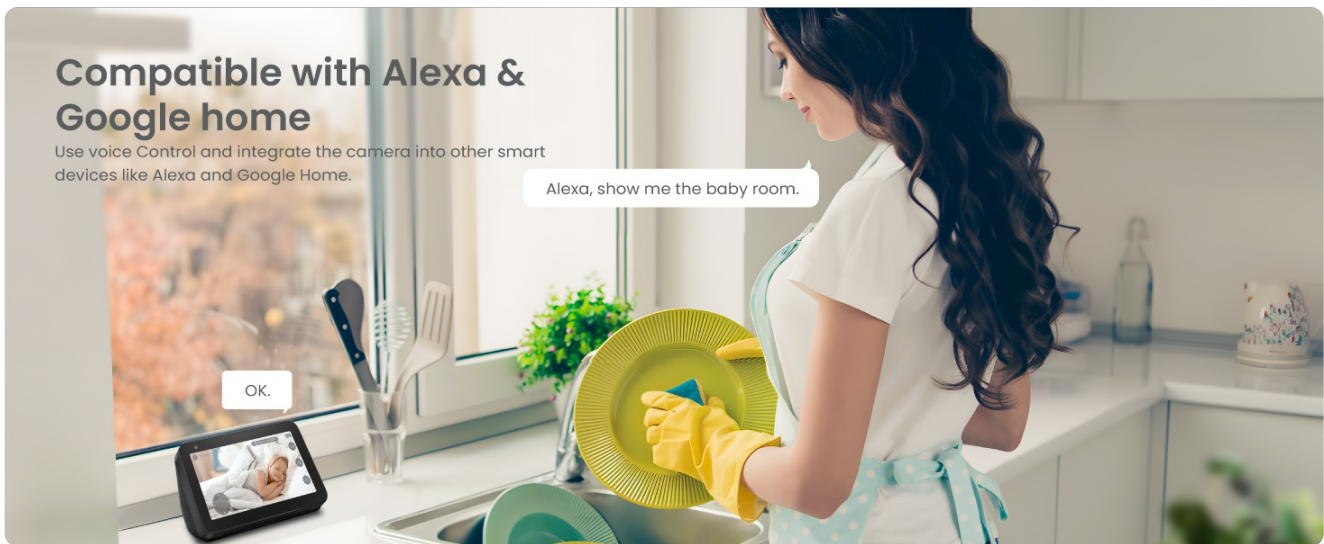


Image: A woman in a kitchen interacting with an Alexa device, which displays a live feed from the Owltron C3 camera.

MAINTENANCE

- **Cleaning:** Use a soft, dry cloth to clean the camera lens and body. Avoid harsh chemicals.
- **Firmware Updates:** Regularly check the Owltron app for firmware updates to ensure optimal performance and security.
- **Storage Management:** If using an SD card, periodically review and delete old footage to free up space. Consider cloud storage for continuous backup.

TROUBLESHOOTING

Problem	Solution
Camera won't connect to Wi-Fi	Ensure your Wi-Fi network is 2.4GHz or 5GHz. Check Wi-Fi password. Move camera closer to the router. Reset the camera and try pairing again.
No live feed or choppy video	Check your internet connection speed. Ensure the camera has a strong Wi-Fi signal. Restart the camera and the app.
Motion detection alerts not received	Verify motion detection is enabled in the app settings. Check app notification permissions on your phone. Adjust motion sensitivity.
Two-way audio not working	Ensure microphone and speaker permissions are granted to the app. Check volume settings on your phone and in the app.

SPECIFICATIONS

- **Model:** LF-C3t
- **Resolution:** 4MP (2K)
- **Connectivity:** 2.4GHz & 5GHz Wi-Fi
- **Night Vision:** Up to 33 ft (6 IR LEDs)
- **Audio:** 2-Way Audio
- **Storage:** Micro SD Card (up to 128GB, not included), Cloud Storage
- **Compatibility:** Amazon Alexa

- **Power Source:** Corded Electric (5 watts)
- **Dimensions:** 6.69 x 5.67 x 2.99 inches

WARRANTY INFORMATION

owltron products typically come with a 2-year warranty. Please refer to your purchase documentation or contact customer support for specific warranty details and terms.

CUSTOMER SUPPORT

For further assistance, technical support, or warranty claims, please contact owltron customer service through the following channels:

- **Email:** Refer to your product packaging or the Owltron app for contact details.
- **Online Support:** Visit the official owltron website or use the in-app support feature.

Please have your model number (LF-C3t) and purchase information ready when contacting support.