

Nutale F15X

Nutale Air Smart Card Wallet Tracker Card F15X Instruction Manual

Model: F15X | Brand: Nutale

1. INTRODUCTION

This manual provides essential information for the proper setup, operation, maintenance, and troubleshooting of your Nutale Air Smart Card Wallet Tracker Card. Please read this manual thoroughly before using the device to ensure optimal performance and safety. The Nutale Air Smart Card is designed to help you locate your personal items using Apple's Find My network.

2. SAFETY INFORMATION

- Keep the device away from extreme temperatures and direct sunlight.
- Do not attempt to disassemble, repair, or modify the device. This will void the warranty.
- Dispose of the device and its battery responsibly according to local regulations.
- This device is not a toy. Keep out of reach of children.

3. PACKAGE CONTENTS

- 1 x Nutale Air Smart Card Wallet Tracker Card (Model F15X)
- 1 x Instruction Manual

4. PRODUCT OVERVIEW

The Nutale Air Smart Card is a thin, credit card-sized Bluetooth tracker designed for easy integration into wallets, luggage tags, or other personal items. It leverages the Apple Find My network for global positioning and features a built-in speaker for audible alerts.

Nutale[®] Air Card

Works with the Apple Find My App
Find lost Items



Image: The Nutale Air Smart Card, highlighting its compatibility with the Apple Find My app.

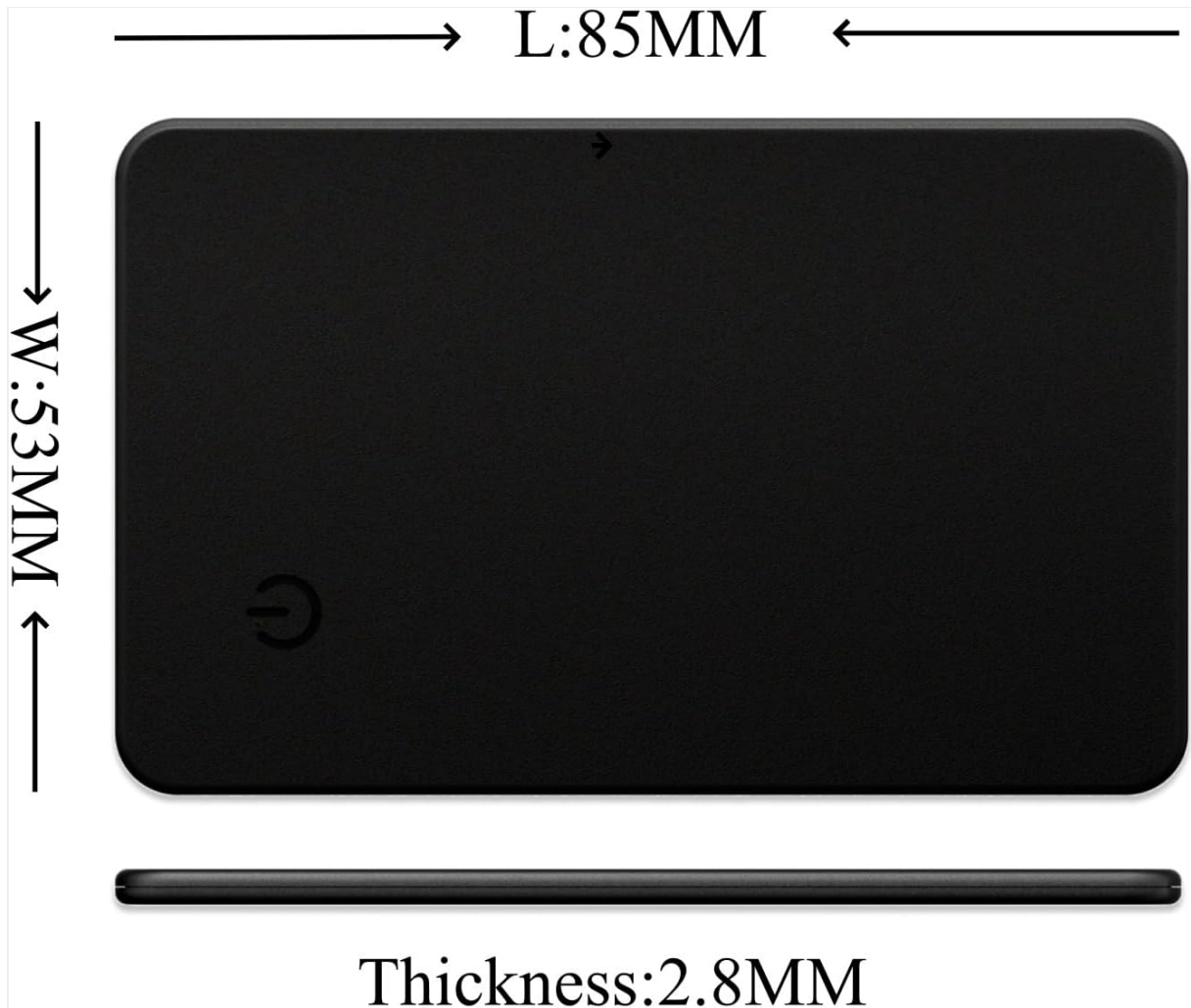


Image: Detailed dimensions of the Nutale Air Smart Card, showing its thin profile.



Image: Overview of key features including global positioning, long standby time, and IP65 protection.



IP65 Water Resistant

Image: The Nutale Air Smart Card demonstrating its IP65 water resistance.

2-3 Years Ultra Long Standby Time

Built in ultra large capacity 540mAh battery
No need to charge, say goodbye to battery life anxiety!

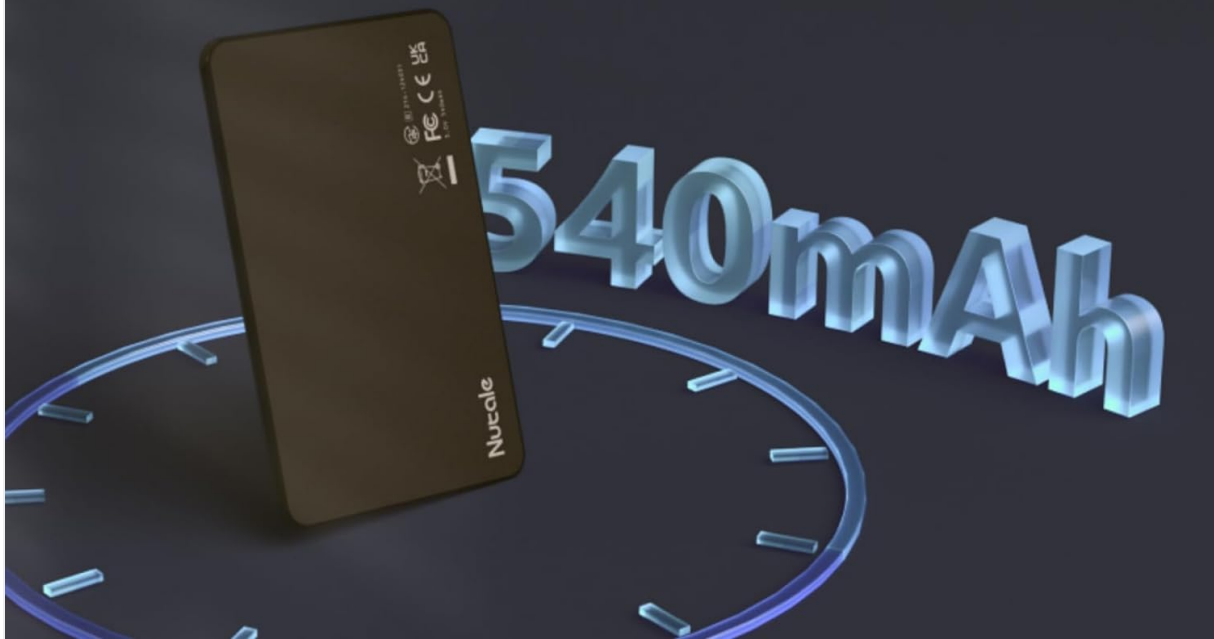


Image: Information on the device's 2-3 year ultra-long standby time, powered by a 540mAh battery.

5. SETUP

5.1 System Requirements

- Apple iOS device only (Android devices are not supported).
- iOS 14.5 or above.
- Ensure the Find My app has the "Items" option. If not, update your iOS system.

5.2 Pairing Your Device

1. **Power On:** Long press the device button for 5 seconds until you hear a beep, indicating the device is on.
2. **Open Find My App:** On your iOS device, open the "Find My" application.
3. **Add Item:** Tap on "Items" then "Add Item".
4. **Select Supported Item:** Choose "Other Supported Item" from the options.
5. **Follow On-Screen Prompts:** Your device will be detected. Follow the instructions on your screen to complete the pairing process.



Image: Visual guide for adding the Nutale Air Smart Card to the Find My app.

Your browser does not support the video tag.

Video: Demonstrates the setup and basic functionality of the Nutale Air Smart Card with an iOS device.

6. OPERATING INSTRUCTIONS

6.1 Locating Nearby Items

If your Nutale Air Smart Card is within Bluetooth range, you can play a sound on its built-in speaker to help you find it. Open the Find My app, select your Nutale Air Smart Card, and tap "Play Sound". You can also ask Siri, "Hey Siri, find my item."



Play sound-If the item is hiding nearby, you can play a sound in the Find My app, or say "Hey Siri, find my item". With a sound you can find it easily.



Image: Illustrates how to use the Find My app or Siri to play a sound on the tracker card.



Works with
Apple Find My

Global Positioning

Indoor Play Sound Range

10-20m

Outdoor Play Sound Range

30-50m



Use Find my APP,
Click Play Sound



Hi,siri,Find My Wallet



Works With Siri

Image: Details the effective range for playing sound (10-20m indoors, 30-50m outdoors) and Siri compatibility.

6.2 Locating Items Further Away

The Apple Find My network, composed of hundreds of millions of Apple devices, can help you locate your Nutale Air Smart Card even when it's out of your personal Bluetooth range. The location information is encrypted and anonymous, ensuring your privacy.



Image: A global map showing how the Find My network assists in locating your device anywhere.

6.3 Left Behind Remind

The Find My app can send you a notification if you leave your Nutale Air Smart Card behind and it disconnects from your phone's Bluetooth range. This feature helps prevent accidental loss.

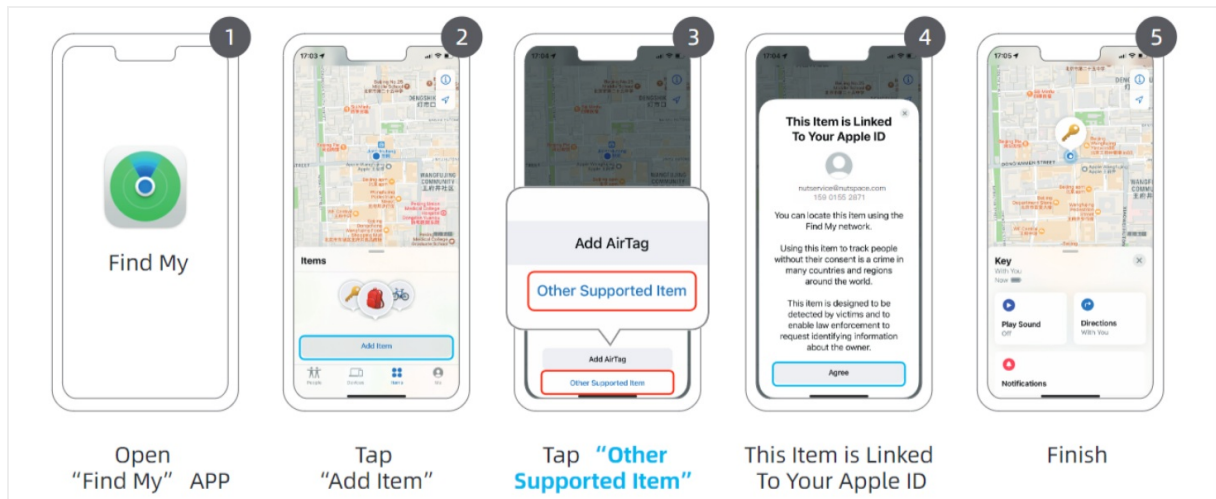


Image: Demonstration of the 'Notify When Left Behind' feature on an iPhone.

6.4 Privacy Protection

Nutale Air Smart Cards offer strong privacy protection. They do not store any location data or history. All data is transmitted via Apple's Find My network, which is encrypted and anonymous. Only the owner can access the location information.



Image: Visual representation of the privacy protection features of the Nutale Air Smart Card.

6.5 Preventing Accidental Tracking

iOS devices can detect a Nutale Air Smart Card that isn't with its owner and notify the user if an unknown Nutale Air Smart Card is seen to be traveling with them over time. If a Nutale Air Smart Card is separated from its owner for an extended period, it will play a sound when moved to draw attention to it.



Image: Explains how the device helps prevent unwanted tracking by alerting users to unknown trackers.

7. MAINTENANCE

7.1 Cleaning

Wipe the device with a soft, dry cloth. Do not use harsh chemicals or abrasive materials.

7.2 Battery Information

The Nutale Air Smart Card has a built-in 540mAh battery that is **not rechargeable or replaceable**. The battery is designed to last approximately 2-3 years under normal usage conditions.

7.3 Water Resistance

The device is IP65 water resistant, meaning it is protected against dust ingress and low-pressure water jets from any direction. It is not designed for submersion in water.



Image: The Nutale Air Smart Card highlighting its IP65 dust and water protection.

8. TROUBLESHOOTING

Problem	Solution
Device does not pair with iPhone.	Ensure your iPhone is running iOS 14.5 or above. Check if the Find My app has the "Items" tab; if not, update iOS. Make sure you long-press the device button for 5 seconds to power it on before attempting to pair.
Cannot hear the device's sound alert.	Ensure the device is within Bluetooth range (10-20m indoors, 30-50m outdoors). Check if the device's battery is depleted (though it has a long lifespan, extreme usage might affect it).
Location is inaccurate or not updating.	Location accuracy depends on the density of Apple devices in the Find My network. In areas with fewer Apple devices, location updates may be less frequent or precise. Ensure your iPhone's location services are enabled for the Find My app.
Device does not work with my Android phone.	The Nutale Air Smart Card is designed exclusively for Apple's Find My network and is compatible with iOS devices only. Android devices are not supported.

9. SPECIFICATIONS

Feature	Detail
Brand	Nutale
Model	F15X
Dimensions	85mm (L) x 53mm (W) x 2.8mm (Thickness)
Material	Acrylonitrile Butadiene Styrene (ABS)
Weight	9 Grams
Connectivity Technology	Bluetooth 5.3
Control Method	App (Apple Find My)
Compatible Devices	Apple iOS devices (iOS 14.5 or above)
Range	Up to 50 meters (outdoor)
Battery Type	Built-in 540mAh Lithium Metal (non-rechargeable, non-replaceable)
Battery Average Life	2-3 years
Water Resistance	IP65

10. WARRANTY

Nutale provides a one-year warranty for the Nutale Air Smart Card Wallet Tracker Card from the date of purchase. This warranty covers manufacturing defects. Please retain your proof of purchase for warranty claims.

Professional Service

Nutale provides a one-year warranty and attentive customer support for every Wallet Finder.



Image: Depicts professional customer service and highlights the one-year warranty.

11. CUSTOMER SUPPORT

For any questions, technical assistance, or warranty claims, please contact Nutale Store customer support. Refer to the contact information provided with your purchase or visit the official Nutale website.