

Manuals+

[Q & A](#) | [Deep Search](#) | [Upload](#)

[manuals.plus](#) /

- › [Yaheetech](#) /
- › [Yaheetech Wooden Raised Garden Bed Instruction Manual](#)

Yaheetech YT-00133001-47VC1

Yaheetech Wooden Raised Garden Bed Instruction Manual

Model: YT-00133001-47VC1

Brand: Yaheetech

INTRODUCTION

Thank you for choosing the Yaheetech Wooden Raised Garden Bed. This manual provides essential information for the proper assembly, use, and maintenance of your new garden bed. Designed for cultivating a variety of plants, this raised bed offers a convenient and efficient way to manage your garden space. Please read these instructions carefully before beginning assembly and retain them for future reference.



Image: The Yaheetech Wooden Raised Garden Bed, shown here filled with a vibrant assortment of green plants and ripening red tomatoes, demonstrating its ample capacity for diverse gardening.

PRODUCT FEATURES

- **Ample Inner Space:** The garden planter provides a generous inner space of 46" L x 23.5" W x 16" H, offering sufficient room for vegetables, flowers, herbs, and other plants to thrive.
- **Durable Fir Wood Construction:** Crafted from robust fir wood with a fine spray painting finish, this elevated planter box is designed for durability and low maintenance. It effectively retains soil moisture and prevents leakage.
- **Single-Piece Side Plates:** Each side of the raised planting bed features a solid, single-piece board, ensuring a secure and leak-free structure, unlike designs with multiple smaller wooden plates.
- **Efficient Bottom Drainage:** Equipped with a four-cornered drainage design at the bottom, this feature promotes proper ventilation and allows excess water to drain away, preventing waterlogging and supporting healthy plant growth.
- **Versatile Application:** This large garden bed is practical for cultivating a wide range of plants, including vegetables, flowers, and herbs, in various outdoor settings such as patios, yards, gardens, and greenhouses, simplifying plant management.

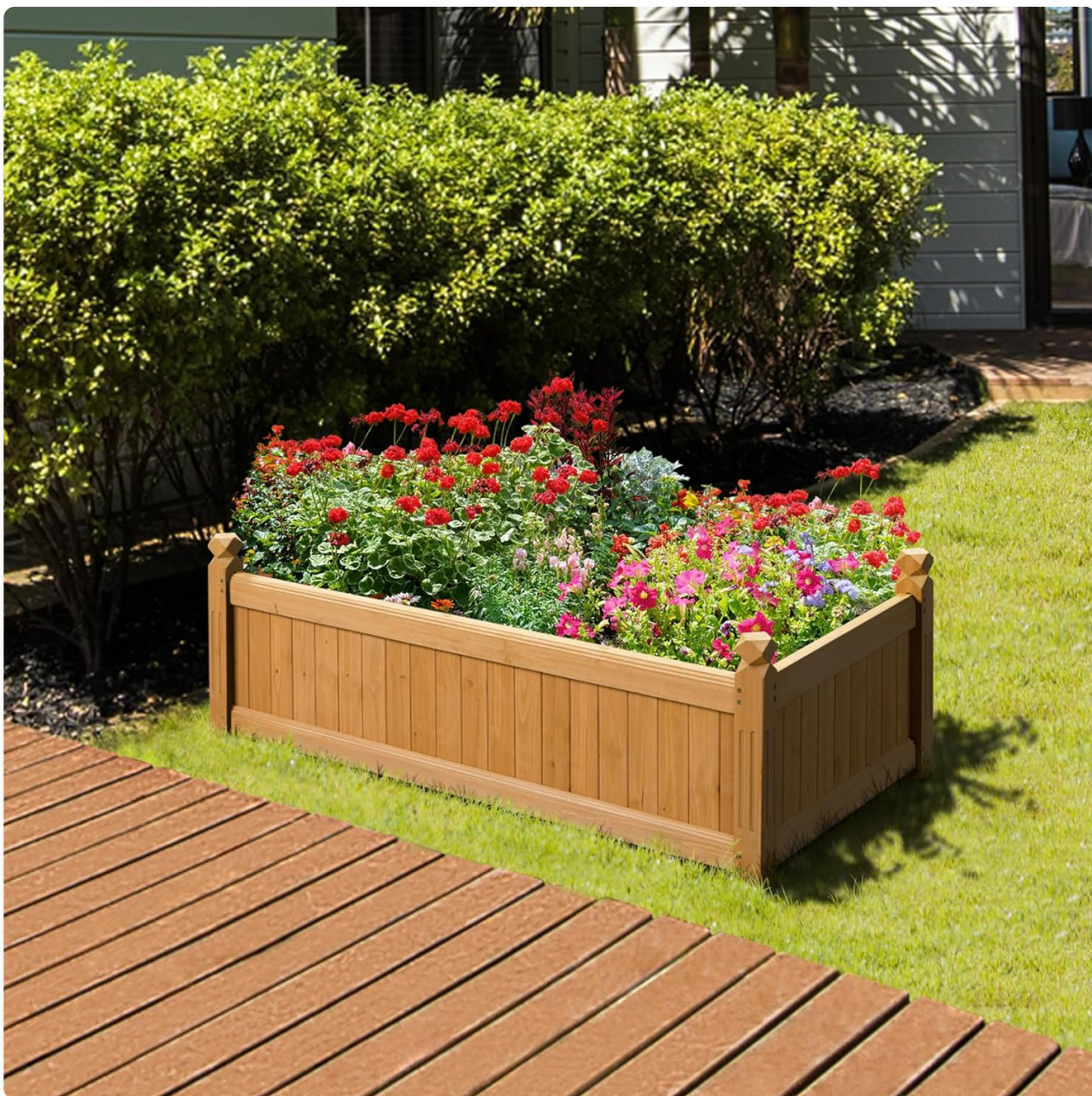
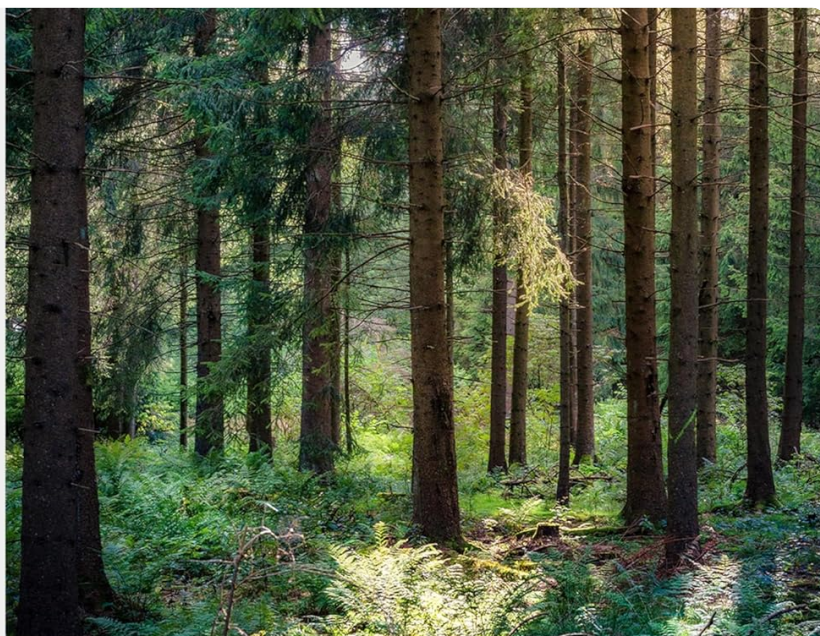


Image: The Yaheetech Wooden Raised Garden Bed beautifully integrated into a garden landscape, showcasing its use for vibrant floral arrangements.

INCLUDED COMPONENTS

Before beginning assembly, please ensure all parts are present and undamaged. The package includes:

- Wooden Side Panels
- Wooden Corner Posts
- Wooden Bottom Slats
- Assembly Hardware (screws, etc.)
- Tools for Assembly
- Instruction Manual (this document)



High Quality Material



Selected fir wood and thick board panels make the planter durable even for outdoor use

Image: A composite image highlighting the high-quality fir wood material used in the Yaheetech Raised Garden Bed, featuring wood logs, a forest, and a planter filled with flowers.

ASSEMBLY INSTRUCTIONS

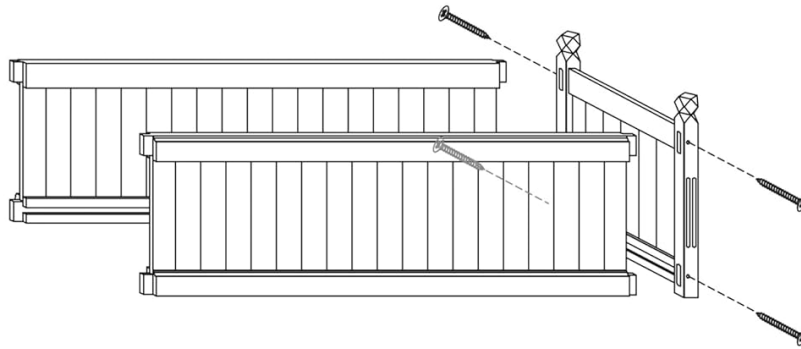
Assembly of the Yaheetech Wooden Raised Garden Bed is designed to be straightforward and requires minimal effort. Follow these steps for quick setup:

1. **Step 1: Attach Side Panels to Corner Posts.** Begin by sliding the wooden side panels into the grooves of the corner posts. Ensure the panels are securely seated.
2. **Step 2: Insert Bottom Slats.** Once the main frame is assembled, carefully place the wooden bottom slats into the designated slots at the base of the planter. These slats will form the floor of your garden bed.
3. **Step 3: Secure Remaining Side Panels.** Complete the frame by attaching the remaining side panels to the corner posts, ensuring all connections are firm and stable.

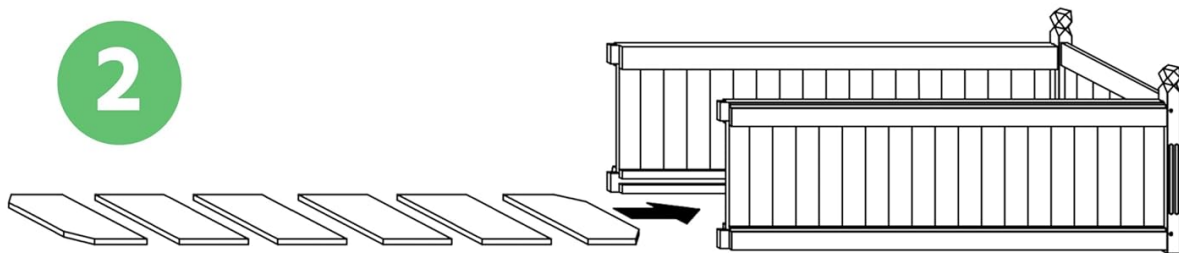
No complex tools are required, and the design allows for a quick and easy assembly process.

Easy assembly in 3 steps with few components

1



2



3

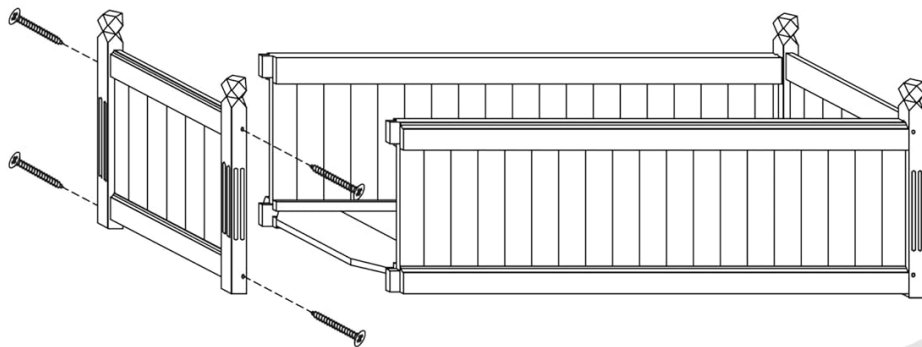


Image: A visual guide illustrating the simple three-step assembly process for the garden bed, highlighting how panels slide into posts.

OPERATING GUIDELINES

Placement

Choose a location that receives adequate sunlight for the plants you intend to grow. Ensure the ground is level to prevent uneven settling of the bed.

Soil Preparation

Fill the raised bed with a high-quality soil mix suitable for your chosen plants. A good mix typically includes compost, topsoil, and other organic matter to provide essential nutrients and good drainage.

Planting

Plant your vegetables, flowers, or herbs according to their specific spacing and depth requirements. The generous dimensions of this raised bed allow for diverse planting arrangements.

Watering

Water your plants regularly, ensuring the soil remains moist but not waterlogged. The integrated four-corner drainage system will help prevent excess water accumulation, promoting healthy root development.



Four-corner Drainage Design

Allow excess water to drain out



Image: A detailed illustration of the garden bed's four-corner drainage system, demonstrating how it facilitates the outflow of excess water to prevent root rot.

MAINTENANCE

To ensure the longevity and optimal performance of your Yaheetech Wooden Raised Garden Bed, consider the following maintenance tips:

- **Cleaning:** Periodically clean the exterior of the wood with a soft brush and mild soap solution to remove dirt and debris. Rinse thoroughly and allow to air dry.
- **Wood Protection:** While the fir wood is durable and has a spray painting finish, applying a wood sealant or stain annually can further protect it from weathering and extend its lifespan, especially in harsh climates.
- **Soil Management:** Over time, soil may compact or lose nutrients. Amend the soil annually with fresh compost or

organic matter to maintain fertility and aeration.

- **Pest and Disease Control:** Regularly inspect your plants and the bed for any signs of pests or diseases. Address issues promptly using appropriate organic or chemical treatments as needed.

TROUBLESHOOTING

If you encounter any issues with your raised garden bed, consider these common solutions:

- **Water Accumulation:** Ensure the drainage holes are clear of debris. If the soil is too dense, consider adding more perlite or sand to improve drainage.
- **Wood Warping/Cracking:** This can occur due to extreme temperature changes or prolonged exposure to moisture. Regular application of a wood sealant can help mitigate this. Ensure the bed is not constantly sitting in standing water.
- **Unstable Structure:** Double-check all panel-to-post connections to ensure they are fully seated. If necessary, disassemble and reassemble any loose sections.

SPECIFICATIONS

Attribute	Detail
Brand	Yaheetech
Model Number	YT-00133001-47VC1
Material	Fir Wood
Color	Light Brown
Product Dimensions (L x W x H)	46" x 23.5" x 16"
Item Weight	20.2 pounds
Included Components	Tools, Instruction Manual

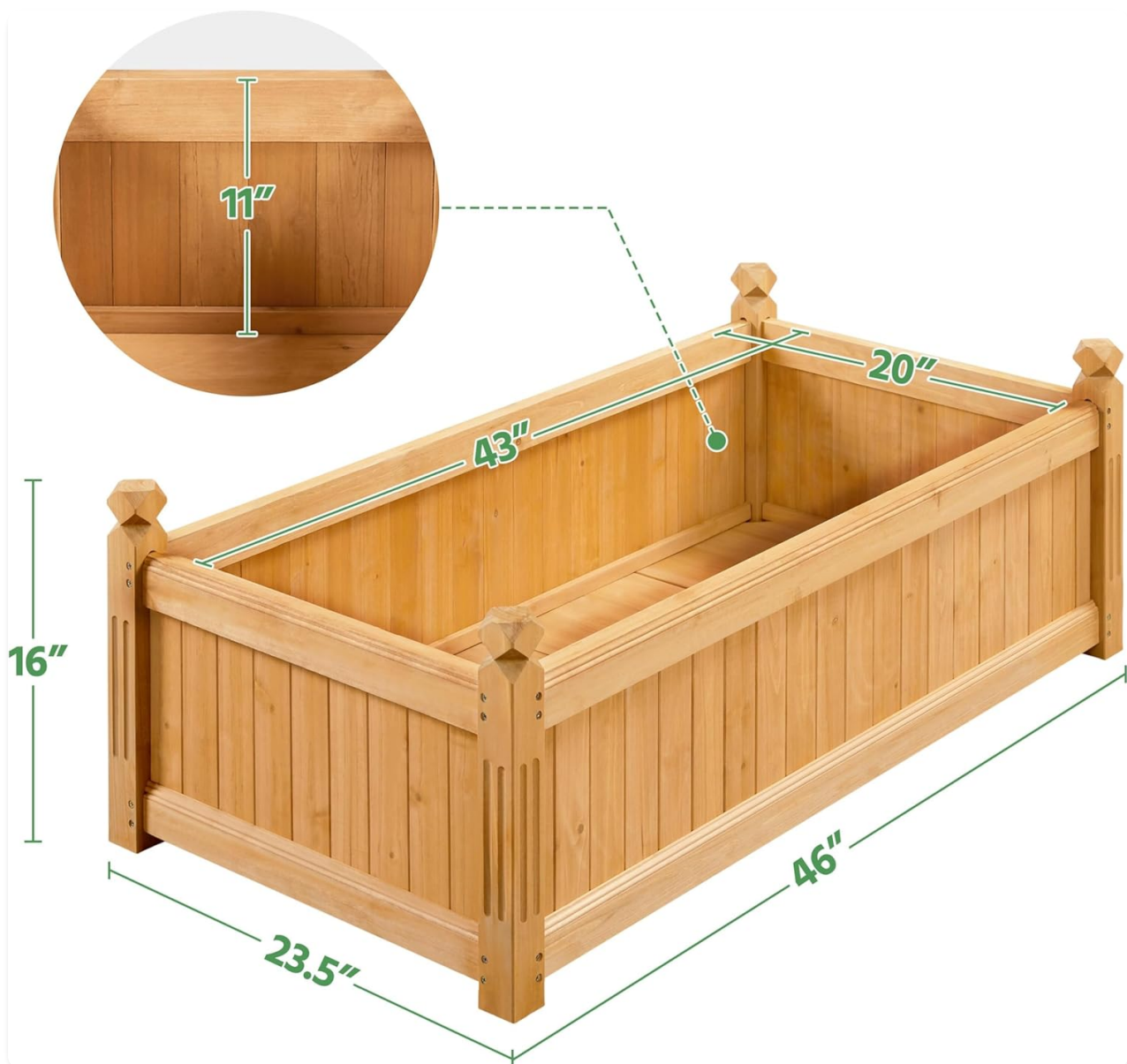


Image: A clear diagram illustrating the precise dimensions of the raised garden bed, including its length, width, and height for planning purposes.

WARRANTY AND SUPPORT

Yaheetech stands behind the quality of its products. For any warranty claims, technical support, or inquiries regarding your Wooden Raised Garden Bed, please contact Yaheetech customer service through the retailer where the product was purchased or visit the official Yaheetech website for contact information. Please have your model number and purchase date available when contacting support.

CUSTOMIZATION

The natural wood finish of your Yaheetech Raised Garden Bed allows for personal customization. You can paint or stain the wood to match your outdoor decor or express your creativity, as shown in the example below.

DIY YOUR RAISED PLANT BED



Image: An example of a customized garden bed, painted with vibrant handprints and floral designs, showcasing the potential for personal artistic expression.