

Manuals+

[Q & A](#) | [Deep Search](#) | [Upload](#)

manuals.plus /

- › [Braun](#) /
- › [Braun Smart IPL 7 Skin i-expert PL7147 Hair Removal Device User Manual](#)

Braun PL7147

Braun Smart IPL 7 Skin i-expert PL7147 Hair Removal Device User Manual

Model: PL7147

INTRODUCTION

The Braun Smart IPL 7 Skin i-expert PL7147 is an intelligent pulsed light (IPL) hair removal device designed for at-home use. This device offers a long-lasting hair reduction solution by adapting to your individual skin tone and treatment needs. It is suitable for various body areas, including legs, arms, chest, back, face, underarms, and intimate areas. This manual provides essential information for safe and effective operation of your device.



Figure 1: Braun IPL 7 Skin i-expert PL7147 device and included accessories.

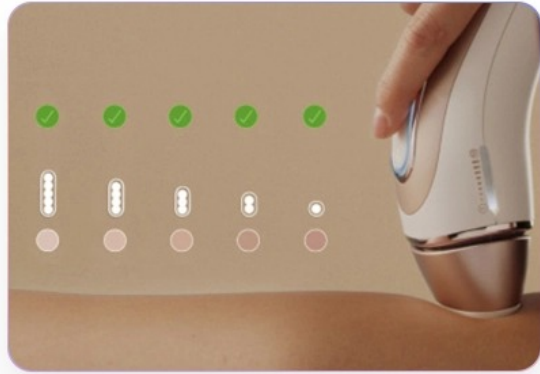
SAFETY WARNINGS

WARNING: For safe use, always follow the provided instructions. This device emits intense pulsed light. Direct eye exposure can lead to eye damage. Ensure the device is used only on the intended skin areas and that the light window is fully in contact with the skin to activate the flash safely.

- Do not use on tanned or highly pigmented skin, as this can increase the risk of adverse reactions.
- Keep the device out of reach of children.
- Consult a medical professional if you have any skin conditions, medical implants, or are taking medications that may affect skin sensitivity.
- Always perform a skin patch test on a small area 24-48 hours before full treatment to check for adverse reactions.

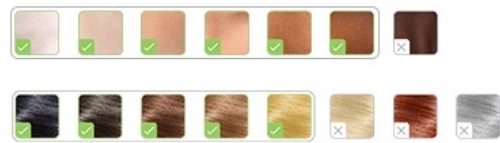
Sicher für die Haut, wirksam an der Haarwurzel

Das einzige IPL Gerät**, das den Hautton 80-mal pro Sekunde misst. Es stellt mit jedem Lichtimpuls automatisch die optimale Intensität ein



Ist IPL das Richtige für dich?

Geeignete Hauttöne und Haarfarben



**Gemeinsame Technologie mit Cyden.

Figure 2: IPL suitability chart for various skin tones and hair colors. Consult this chart before use.

PACKAGE CONTENTS

Your Braun Smart IPL 7 Skin i-expert PL7147 package includes the following items:

- 1 x Braun IPL 7 Skin i-expert Device
- 1 x Standard Attachment
- 1 x Precision Attachment
- 1 x Venus Razor
- 1 x Power Supply Unit
- 1 x Storage Bag



Figure 3: All components included in the Braun IPL 7 Skin i-expert PL7147 package.

SETUP

1. **Unpack:** Carefully remove all components from the packaging.
2. **Connect Power:** Plug the power supply unit into the device and then into an electrical outlet. The device is designed for corded operation.
3. **Choose Attachment:** Select the appropriate attachment for the body area you intend to treat. The standard attachment is for larger areas, while the precision attachment is for smaller, more sensitive areas like the face or bikini line. Ensure the attachment clicks securely into place.
4. **Download App (Optional but Recommended):** Download the Braun Skin i-expert app on your smartphone for personalized treatment guidance and progress tracking.



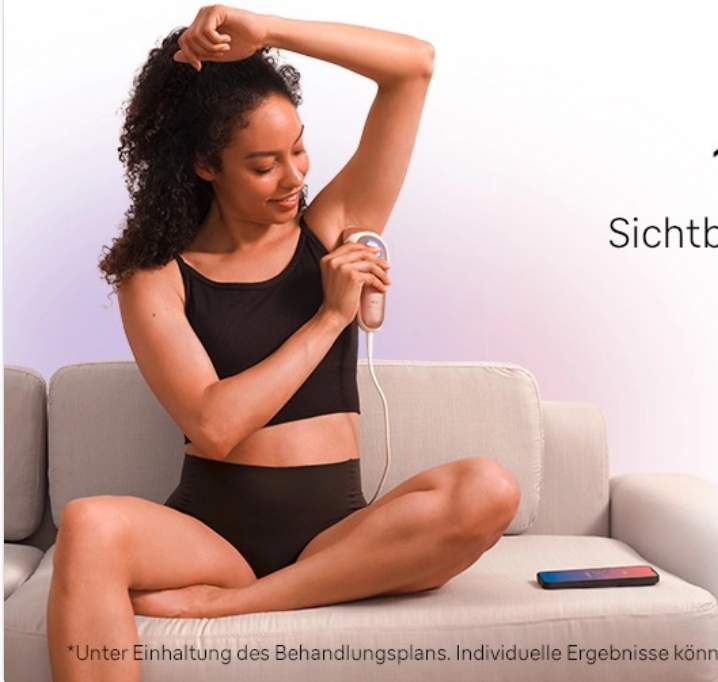
Figure 4: Standard and precision attachments for targeted treatment.

OPERATING INSTRUCTIONS

Follow these steps for effective and safe use of your Braun IPL device:

1. **Prepare Skin:** Ensure the treatment area is clean, dry, and freshly shaved. Do not wax, epilate, or pluck hair, as the IPL needs the hair root to be present for effective treatment.
2. **Power On:** Press the power button on the device. The device will perform an automatic skin tone assessment. The indicator lights will show the detected skin tone and recommended intensity level.
3. **App Integration:** If using the Skin i-expert app, connect your device via Bluetooth. The app will provide real-time feedback on coverage and guide you through your personalized treatment plan.
4. **Apply to Skin:** Place the device's light window firmly against your skin. Ensure full contact to activate the flash.
5. **Initiate Treatment:** Press the flash button to emit a light pulse. For gliding mode, hold the flash button and slowly glide the device over the skin. For stamp mode, press and release the flash button for each area.
6. **Move Systematically:** Treat the area by moving the device systematically, ensuring slight overlap between flashes to cover all desired areas without re-treating the same spot too frequently.
7. **Repeat as Needed:** Follow your personalized treatment schedule, typically once a week for the initial phase, then adjust based on hair regrowth.

BRAUN



#BraunSmartIPL

Unser **schnellster Weg zu
1 Jahr seidig-glatte Haut***
Sichtbare Ergebnisse in nur **3 Wochen**



Vorher



Nachher

Auch für den Intimbereich geeignet

*Unter Einhaltung des Behandlungsplans. Individuelle Ergebnisse können variieren.

Figure 5: Proper technique for using the Braun IPL device on the underarm.

A woman is lying on a white sheet, using the Braun IPL device on her leg. A smartphone is shown next to her, displaying the Skin i-expert app interface. The app shows a progress indicator for 'Abdeckung der Beine' (Leg coverage) at 90% 'Großartig' (Great) and a 'Fertig' (Done) button. The app also displays 'Weiter so!' (Continue) and 'Keine Lücken und vergessenen Stellen' (No gaps and forgotten spots).

Abdeckung der Beine

90%
Großartig

Weiter so!

Fertig

**Beste Ergebnisse,
schnell und einfach**

Keine Lücken und vergessenen Stellen

Perfektes Finish mit
Echtzeit-Feedback zur Abdeckung

Personalisierte Anwendung dank
intelligentem Kalender

Figure 6: The Skin i-expert app provides real-time feedback on treatment coverage.

MAINTENANCE

Proper maintenance ensures the longevity and performance of your IPL device:

- **Cleaning:** After each use, ensure the device is unplugged and cool. Wipe the light window and the exterior of the device with a dry, lint-free cloth. Do not use abrasive cleaners or immerse the device in water.

- **Attachment Care:** Clean the attachments similarly with a dry cloth. Ensure no hair or debris obstructs the light window.
- **Storage:** Store the device and all accessories in the provided storage bag in a cool, dry place, away from direct sunlight and moisture.



Figure 7: Store your device and accessories in the provided bag for protection.

TROUBLESHOOTING

If you encounter issues with your Braun IPL device, refer to the following common solutions:

- **Device Not Turning On:** Ensure the power cord is securely plugged into both the device and a working electrical outlet.
- **No Flash Emitted:** The device requires full skin contact to flash. Ensure the light window is pressed firmly against the skin. Also, check if your skin tone is suitable for IPL treatment (refer to the skin tone chart).
- **Skin Redness or Irritation:** This may occur if the intensity level is too high for your skin type or if the device was used on tanned or sensitive skin. Reduce the intensity or discontinue use if irritation persists. Always perform a patch test.
- **App Connectivity Issues:** Ensure Bluetooth is enabled on your smartphone and the device is within range. Restart both the device and the app if connection problems persist.
- **Uneven Results:** Ensure you are systematically covering all areas with slight overlap and not missing spots. The app's coverage feedback can help improve consistency.

For further assistance, consult the full user manual provided with your product or contact Braun customer support.

SPECIFICATIONS

Feature	Detail
Model Number	PL7147
Brand	Braun
Power Source	Corded Electric (240 Volts)
Product Dimensions (L x W x H)	27.6 x 9.7 x 19.6 cm
Item Weight	1.17 kilograms (1166 Grams)
Included Components	IPL Device, Standard Attachment, Precision Attachment, Venus Razor, Power Supply Unit, Storage Bag
Recommended Uses	Hair removal for legs, arms, chest, back, face, underarms, and intimate areas
Country of Origin	United Kingdom

WARRANTY AND SUPPORT

For information regarding the product warranty, please refer to the warranty card included in your product packaging or visit the official Braun website. For technical support, troubleshooting beyond this manual, or spare parts, please contact Braun customer service directly. Contact details can typically be found on the Braun website or in the full product manual.