

[Manuals.plus](#) /

› [NEEWER](#) /

› NEEWER HD Telephoto Lens LS-36 User Manual

## NEEWER LS-36

# NEEWER HD Telephoto Lens LS-36 User Manual

## INTRODUCTION

---

This manual provides detailed instructions for the NEEWER HD Telephoto Lens LS-36. This lens is designed to enhance your mobile photography by providing 7x optical magnification, allowing you to capture distant subjects with clarity. It is compatible with phone cages and backplates featuring a 17mm thread mount.

## PACKAGE CONTENTS

---

Verify that all items listed below are included in your package:

- 7X Telephoto Lens x1
- Lens Cover x2
- Storage Case x1
- Cleaning Cloth x1



## Package Contents

7X Telephoto Lens x1

Lens Cover x2

Storage Case x1

Cleaning Cloth x1

Figure 1: Package Contents. The image displays the telephoto lens, two lens caps, a soft cleaning cloth, and a zippered storage case.

## SETUP INSTRUCTIONS

The NEEWER HD Telephoto Lens LS-36 is designed for use with phone cases or cages that feature a 17mm threaded lens adapter. Ensure your phone accessory has this specific thread type for proper attachment.

- 1. Prepare Your Phone:** Before attaching the lens, clean the main camera and any additional cameras on your phone to prevent dust or smudges from affecting image quality.
- 2. Attach to 17mm Threaded Backplate:** Align the 17mm thread of the telephoto lens with the 17mm threaded mount on your phone cage or backplate. Gently twist the lens clockwise until it is securely tightened.
- 3. Ensure Stability:** For optimal stability and to prevent shakes, tighten the lens until there is no gap between it and the phone cage, phone case, or backplate. Using a tripod is recommended for clear shots, especially when capturing distant subjects.

**Note: This lens is ONLY compatible with 17mm threaded backplates and should be installed onto the main camera of your phone. It is NOT compatible with M mount or T mount systems.**

## Enhanced Stability

To achieve better stability and avoid shakes, it is advised to tighten the 17mm threads between the lens and the phone backplate lens thread and use the phone cage with a tripod.



With Tripod



With Camera Cage

Figure 2: Lens attachment to a 17mm threaded phone cage. The image highlights the 17mm thread on the lens for secure mounting.



Figure 3: The telephoto lens securely attached to a smartphone in a compatible cage, demonstrating the complete setup.

## OPERATING THE LENS

### 7x Optical Magnification

The lens provides 7x optical magnification, allowing you to bring distant subjects closer without digital zoom degradation. This is ideal for capturing wildlife, sports, and landscapes.

# 7X Magnification

7X magnification captures distant scenes via your phone, ensuring you never miss a moment.

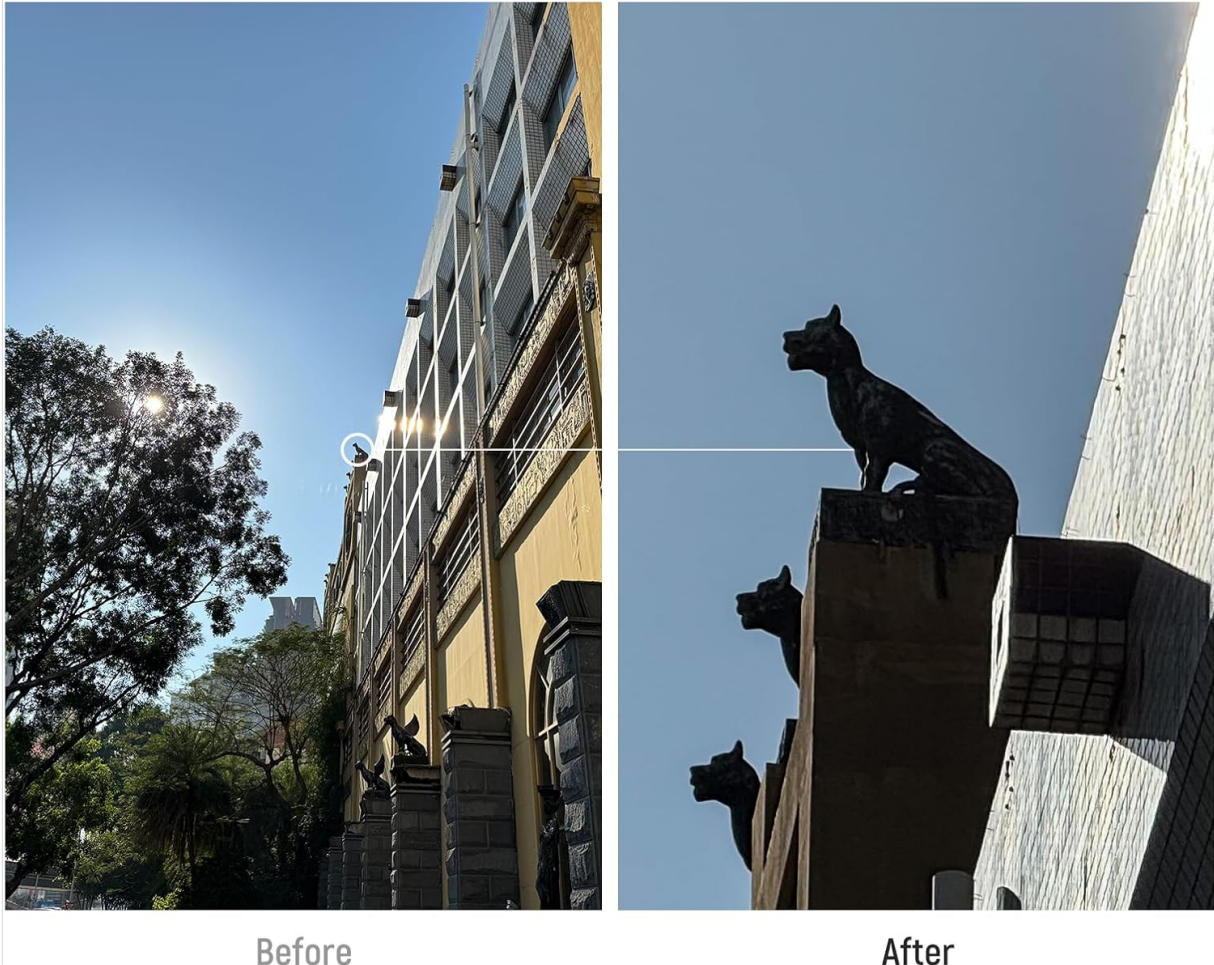


Figure 4: Before and after comparison of a distant building, illustrating the 7x magnification capability of the lens.

## Manual Focus Adjustment

The lens features a manual focus ring. Rotate this ring to achieve sharp focus on your subject. The 15 elements in 12 groups of the optical design work with this manual focus function for clear results.

# MAINTAIN MACRO CONTROL FOR IOS

If you want to maintain your Macro Control setting between camera sessions, go to Settings > Camera > Preserve Settings, then turn on Macro Control

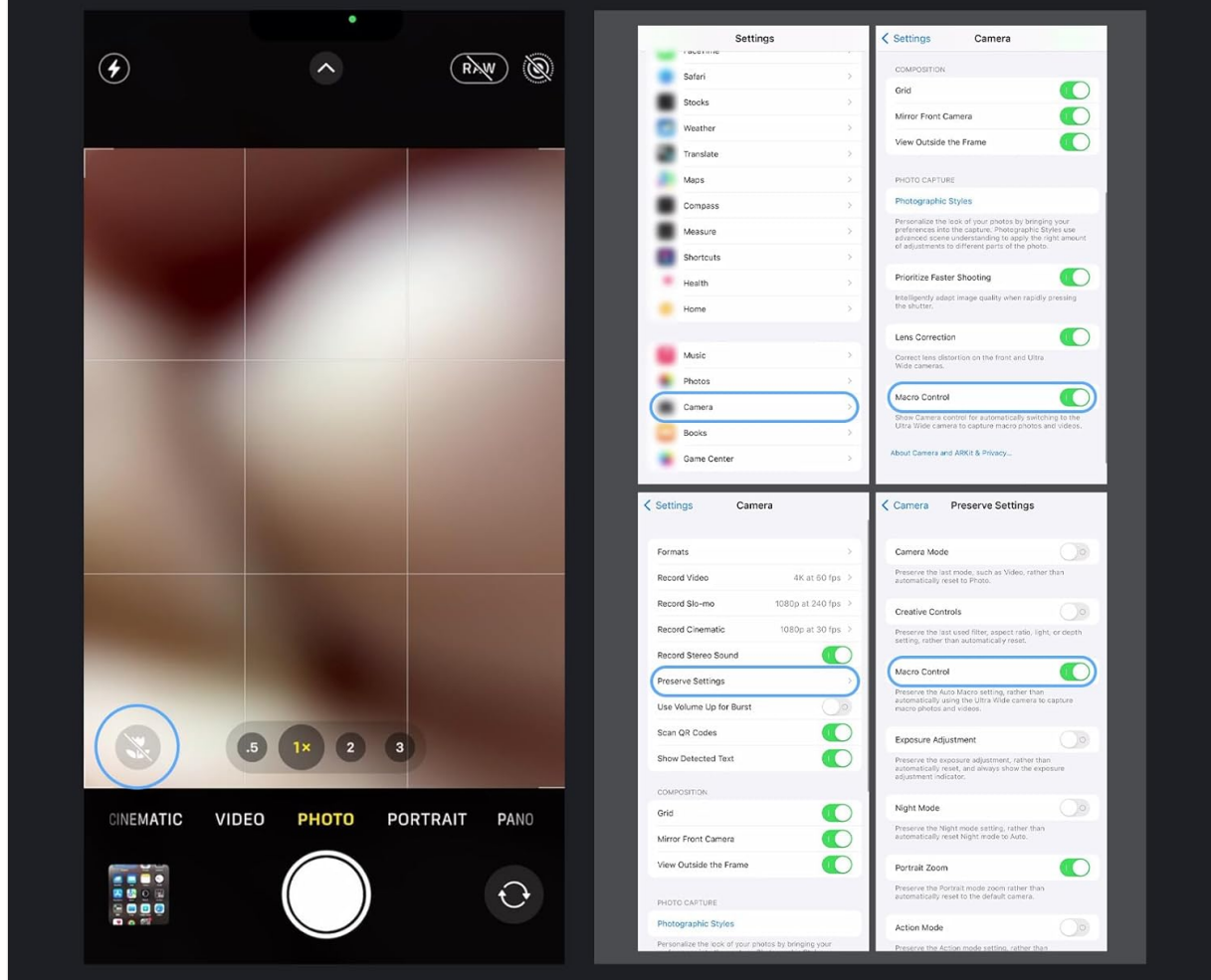


Figure 5: Demonstrates rotating the lens barrel to adjust focus, with an example of a squirrel image before and after focusing.

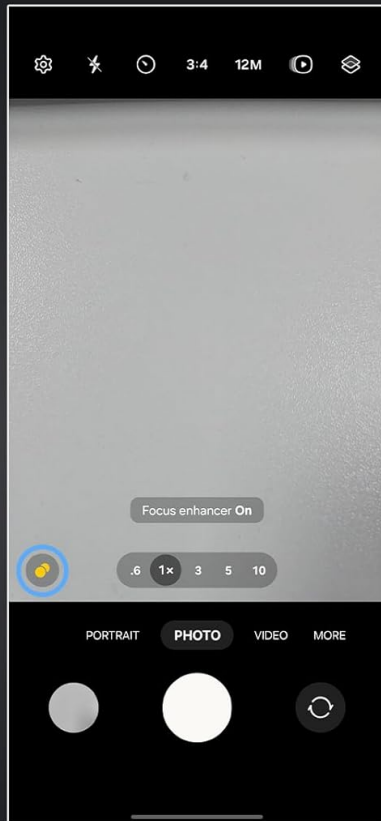
## Managing Macro Control (iOS)

To maintain control over macro settings on iOS devices, follow these steps:

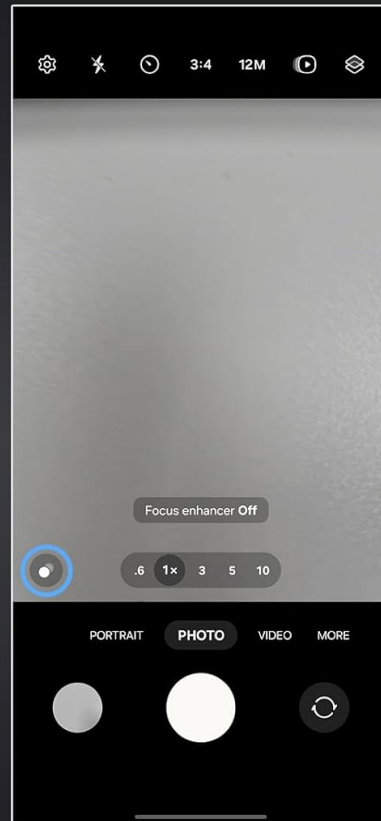
1. Go to **Settings > Camera > Preserve Settings**.
2. Enable **Macro Control**.

# MAINTAIN MACRO CONTROL FOR GALAXY

You can turn the feature on or off by selecting the close focus enhancement icon on the camera screen



Step 1. Open the camera app and tap the close up focus enhancement icon, when illuminated yellow, it is activated



Step 2. Tap again to turn off

Figure 6: iOS settings for Macro Control. This image shows the steps to access and enable the Macro Control feature within the iPhone's camera settings.

## Managing Macro Control (Galaxy)

For Galaxy devices, you can toggle the close-up focus enhancement feature directly on the camera screen:

1. Open the camera app and tap the close-up focus enhancement icon. It will illuminate yellow when activated.
2. Tap the icon again to turn it off.

# Rotation Adjustment

Rotate to focus and capture clear images.



Figure 7: Galaxy camera interface for Macro Control. This image demonstrates how to activate and deactivate the focus enhancer icon in the Samsung Galaxy camera application.

## IMPORTANT NOTES

- **Vignetting:** Depending on your phone model, some vignetting (darkening at the corners of the image) may occur. If this happens, ensure the lens is tightly secured or zoom the camera magnification to 1.1x or more to minimize the effect.
- **Stability:** For the best image quality and to avoid blur, especially at higher magnifications, it is highly recommended to use a tripod or other stabilization equipment.

**Only for 17mm Threaded Lens Backplates**

It can attach to NEEWER PA006 PA011 PA023 PA024 cages for iPhone 15 14 Pro and Pro Max when combined with PA018 and PA019 backplates. Also for NEEWER PA042 UA051 PA033 PA021 PA016 S22 S23 Ultra phone cages for Samsung with 17mm lens backplates.

**NOTE** Only install the lens onto the main camera; NOT compatible with the M mount.

Figure 8: Enhanced Stability. The image on the left shows the phone and lens mounted on a tripod for stability, while the image on the right shows the setup held by hand with a camera cage.

## PRODUCT SPECIFICATIONS

Feature	Specification
Brand	NEEWER
Model Number	LS-36
Product Dimensions	4.69 x 1.5 x 1.5 inches
Item Weight	2.82 ounces
Focal Length Description	17 millimeters
Lens Type	Telephoto
Compatible Mountings	17mm threaded backplates
Optical Magnification	7x

Feature	Specification
Optical Design	15 elements in 12 groups

## TROUBLESHOOTING

---

- **Unclear or Blurry Images:**

- Ensure the lens is securely and tightly threaded onto the phone cage/backplate.
- Adjust the manual focus ring until the subject is sharp.
- Clean the phone's camera lens and the telephoto lens with the provided cleaning cloth.
- Use a tripod or other stabilization method to minimize camera shake, especially for distant subjects.

- **Dark Corners (Vignetting):**

- Confirm the lens is fully tightened.
- Zoom your phone's camera to 1.1x or higher to crop out the vignetted edges.

- **Phone Camera Switching Issues (e.g., to macro mode):**

- For iOS, enable 'Macro Control' in Settings > Camera > Preserve Settings.
- For Galaxy, manually disable the 'Focus Enhancer' icon in the camera app if it activates unexpectedly.

## WARRANTY AND SUPPORT

---

For warranty information and customer support, please refer to the documentation included with your purchase or visit the official NEEWER website. Keep your proof of purchase for any warranty claims.