

[Manuals.plus](#) /

› [SmilingTown](#) /

› SmilingTown Cloud Neon Sign (Model NES-11) User Manual

## SmilingTown NES-11

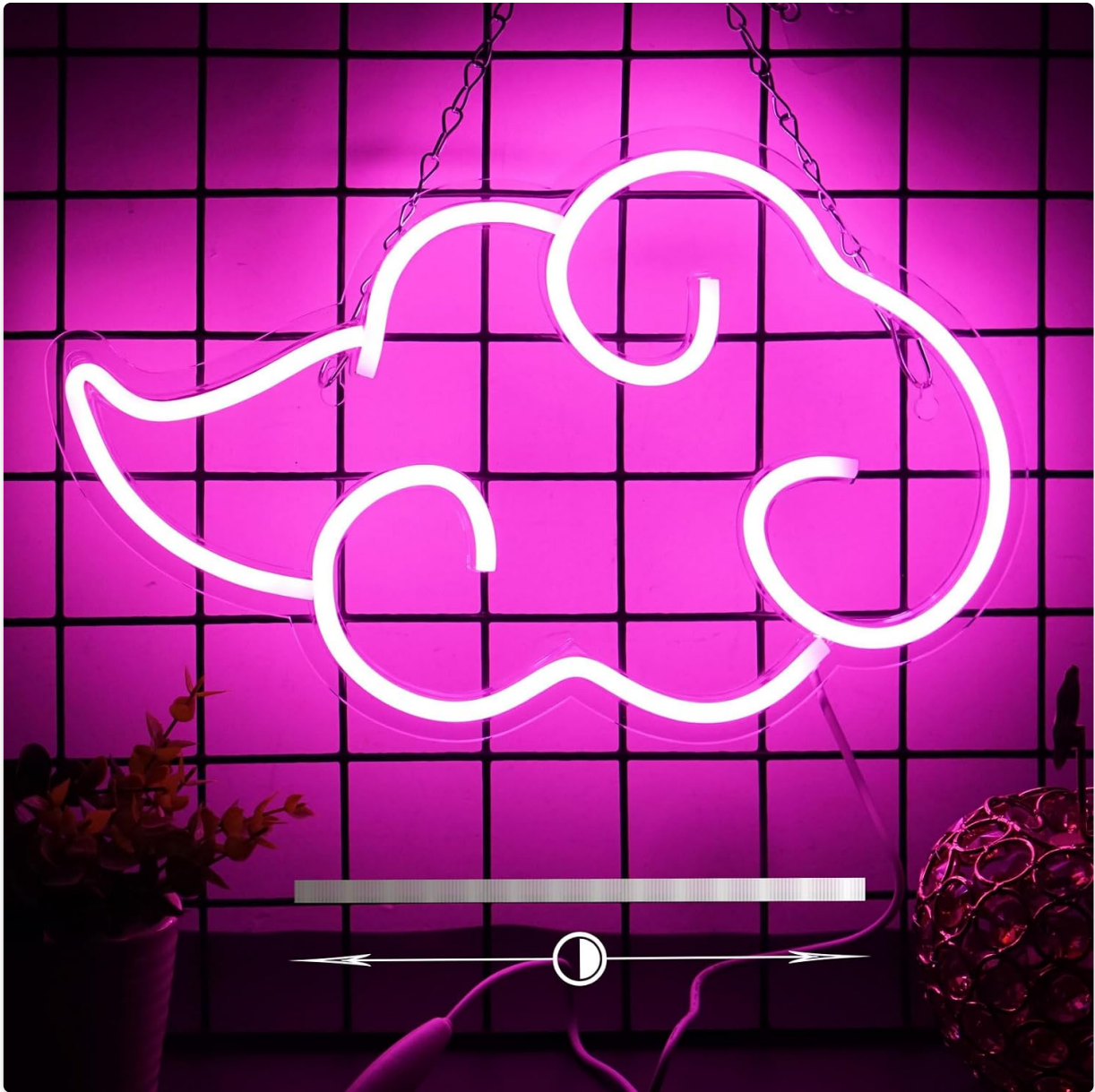
# SmilingTown Cloud Neon Sign (Model NES-11) User Manual

Your guide to setting up and enjoying your decorative LED cloud light.

## 1. INTRODUCTION

---

Thank you for choosing the SmilingTown Cloud Neon Sign, Model NES-11. This decorative LED light is designed to add a unique and vibrant ambiance to any room. Its energy-efficient design and easy installation make it a perfect addition for bedrooms, game rooms, offices, or special events. Please read this manual carefully to ensure proper setup and operation.



*Image 1.1: The SmilingTown Cloud Neon Sign illuminated in pink.*

## 2. PRODUCT FEATURES

- **Clear Neon Light:** Features colored neon strips fixed on a clear acrylic plate, providing a bright and vibrant glow.
- **USB Powered with Adjustable Switch:** Connects to PCs, chargers, or power banks via a USB port. The 71-inch cable includes a switch for easy on/off control and brightness adjustment.
- **Easy to Install:** Equipped with 2 reserved hanging holes. Includes 1 adhesive hook and a chain for versatile mounting on walls, doors, windows, or for tabletop placement.
- **Safe to Use:** Constructed with flexible silicone strip lights and an acrylic backboard, operating at low voltage for energy efficiency and safety, minimizing risk of overheating or shattering.
- **Versatile Decoration:** Ideal for various occasions and settings, including bedrooms, game rooms, offices, bars, pubs, clubs, Christmas parties, and as a thoughtful gift.

# Brightness Control Switch



*Image 2.1: Detail of the sign's qualified acrylic backboard and bright neon strip.*

### 3. PACKAGE CONTENTS

Please verify that all items are present in your package:

- 1 x Cloud Neon Sign (Model NES-11)
- 1 x USB Cable with Integrated On/Off and Brightness Control Switch (approx. 59 inches)
- 1 x Hanging Chain
- 2 x Adhesive Hooks

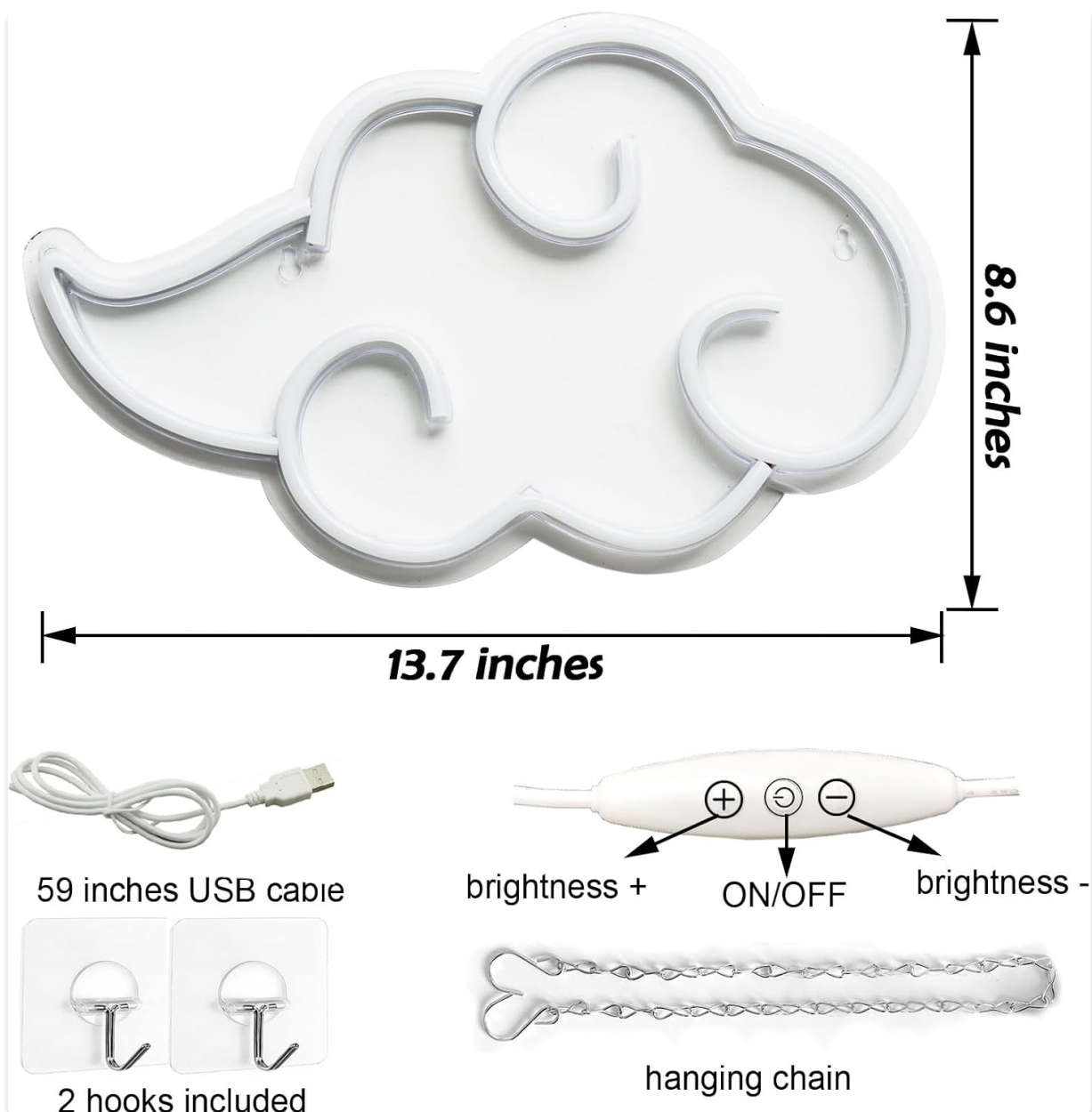


Image 3.1: All included components of the Cloud Neon Sign.

## 4. SETUP INSTRUCTIONS

- 1. Unpack the Sign:** Carefully remove the Cloud Neon Sign and all accessories from the packaging. Ensure to peel off any protective film from the acrylic backboard before use.
- 2. Choose a Mounting Location:** Select a clean, dry, and smooth surface for installation. The sign can be hung on a wall or placed on a flat surface.
- 3. Mounting Options:**
  - **Using Adhesive Hooks:** Clean the desired wall area. Peel off the backing from the adhesive hooks and firmly press them onto the wall, aligning with the pre-drilled holes on the sign. Wait a few minutes for the adhesive to set, then hang the sign.
  - **Using Hanging Chain:** Attach the provided hanging chain to the pre-drilled holes on the sign. Secure the chain to a wall hook or other suitable fixture.
  - **Tabletop Placement:** The sign can also be placed directly on a desk, shelf, or bedside table without mounting.
- 4. Connect Power:** Plug the USB cable into a compatible USB power source (e.g., USB wall adapter,

power bank, computer USB port).

*Video 4.1: Demonstrates unpacking, protective film removal, hanging, and USB power connection for a similar cloud neon sign.*



*Image 4.2: The sign can be powered by various USB sources.*

## 5. OPERATING INSTRUCTIONS

1. **Power On/Off:** Locate the switch on the USB cable. Press the power button to turn the neon sign on or off.
2. **Adjust Brightness:** Use the '+' and '-' buttons on the switch to increase or decrease the brightness of the neon light according to your preference.



### Qualified Acrylic Backboard

The whole light is built on a sturdy acrylic backboard, of good quality and shatterproof

### Bright Neon Strip

The neon light strip is flexible and well-built on the backboard, bright and long-lasting

*Image 5.1: Visual representation of the brightness control feature.*

*Video 5.1: Demonstrates turning the cloud neon sign on/off and adjusting brightness.*

## 6. MAINTENANCE

- **Cleaning:** Gently wipe the sign with a soft, dry cloth. Avoid using abrasive cleaners or solvents that may damage the acrylic or LED strips.
- **Storage:** If storing the sign, ensure it is clean and dry. Store in a cool, dry place away from direct sunlight and extreme temperatures.
- **Handling:** Handle the sign with care to prevent damage to the LED strips or acrylic backboard.

## 7. TROUBLESHOOTING

- **Sign does not light up:**
  - Ensure the USB cable is securely plugged into both the sign and the power source.
  - Verify that the power source is active and providing power.
  - Check if the on/off switch on the cable is in the 'on' position.

- **Light is too dim or too bright:**

- Use the '+' and '-' buttons on the cable switch to adjust the brightness to your desired level.

- **Sign is flickering:**

- Try plugging the USB cable into a different power source to rule out an issue with the current power supply.

## 8. SPECIFICATIONS

---

Attribute	Detail
Model Number	NES-11
Brand	SmilingTown
Power Source	USB Operated (Low Voltage)
Dimensions (Package)	16.34 x 9.17 x 1.22 inches
Item Weight	1.01 pounds
Material	Flexible Silicone LED Strip, Acrylic Backboard

## 9. WARRANTY AND SUPPORT

---

For warranty information or technical support, please refer to the product packaging or contact SmilingTown customer service directly. Keep your purchase receipt for any warranty claims.

## 10. USAGE EXAMPLES

---

The SmilingTown Cloud Neon Sign is perfect for creating a unique atmosphere in various settings. Its distinctive design makes it a focal point for any room.

*Video 10.1: Shows the cloud neon sign enhancing a gaming setup, highlighting its appeal for gamers and content creators.*



*Image 10.2: The neon sign creating a relaxed atmosphere in a gaming environment.*



*Image 10.3: The neon sign providing soft ambient lighting in a bedroom setting.*