

BLIKA B0CQR116VL

BLIKA Globe String Light Suspension Kit Instruction Manual

1. PRODUCT OVERVIEW

The BLIKA Globe String Light Suspension Kit provides a robust and reliable solution for hanging string lights, photos, or other items in various indoor and outdoor settings. This kit features a 500-foot coated stainless steel 304 wire rope, designed for durability and resistance to environmental factors. Its 7x7 strand construction ensures strength, with a bare outer diameter of 1/16 inch and a coated outer diameter of 3/32 inch. The cable offers a breaking strength of 480 lbs, providing secure support for heavy-duty string lights across large areas without sagging. The black coating allows for discreet integration into nighttime environments.

480 lbs

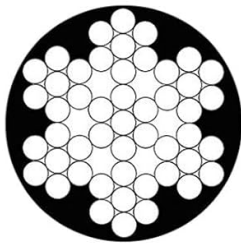


Breaking Strength

Black Coated Stainless Steel Cable



Weather Resistant



7x7 Construction



Corrosion Resistant



Rustproof

3/32" Coated OD



1/16" Bare OD

Image 1.1: Specifications of the 500FT Coated Stainless Steel Cable, highlighting its strength and weather resistance.



Image 1.2: Example of the BLIKA String Light Suspension Kit installed in an outdoor setting.

2. SAFETY INFORMATION

Before installation, carefully read and understand all instructions. Adherence to these safety guidelines is crucial for preventing accidents and ensuring proper operation.

- Ensure all electrical components, such as string lights, are unplugged before handling or installation.
- Do not exceed the maximum weight capacity of the wire rope (480 lbs breaking strength).
- Wear appropriate safety gear, including gloves and eye protection, during installation.
- Ensure mounting points are structurally sound and can support the tension and weight of the installed system.
- Keep children and pets away from the installation area.
- Avoid installing near power lines or other electrical hazards.
- Regularly inspect the wire rope and all components for signs of wear, damage, or corrosion. Replace damaged parts immediately.

3. PACKAGE CONTENTS

The BLIKA Globe String Light Suspension Kit includes the following components:

- 500FT Coated Stainless Steel Cable (1 roll)
- M5 Turnbuckles (10 units)
- M3 Snap Hooks (10 units)
- M3 Hump Screws (20 units)
- M3 Double Rope Clamps (20 units)
- Screws (40 units)
- Plastic Anchors (40 units)
- Expansion Hooks (4 units)
- Wrench (1 unit)
- Screwdriver (1 unit)
- Zip Ties (100 units)
- User Manual (1 unit)

HUMANIZED DESIGN + ENOUGH ACCESSORIES



Image 3.1: All included accessories with their respective quantities and dimensions.

4. SETUP AND INSTALLATION

This kit is designed for straightforward installation on various surfaces including wood, timber, or concrete walls. No specialized tools are required beyond those provided.

1. **Plan Your Layout:** Determine the desired path and tension points for your string lights. Consider the length of the cable and the weight of the lights.
2. **Secure Anchor Points:**
 - For wood or timber, use the provided screws to attach the M3 Hump Screws or Expansion Hooks.
 - For concrete walls, drill appropriate pilot holes, insert the plastic anchors, and then secure the M3 Hump Screws or Expansion Hooks.
 - *Note:* Ensure anchor points are robust enough to withstand tension.
3. **Attach Turnbuckles:** Connect one end of an M5 Turnbuckle to an anchor point.
4. **Thread the Wire Rope:** Unroll the 500FT coated stainless steel cable. Thread one end of the cable through the loop of the M5 Turnbuckle.
5. **Form a Loop with Double Rope Clamps:** Create a secure loop at the end of the cable by passing it through an M3 Double Rope Clamp, then back through, and tightening the clamp using the provided wrench. The double rope clamp design offers enhanced security.
6. **Extend and Tension the Cable:** Run the cable along your planned path to the next anchor point.
7. **Secure the Other End:** At the second anchor point, create another loop using an M3 Double Rope Clamp and connect it to an M5 Turnbuckle.
8. **Adjust Tension:** Use the M5 Turnbuckles to tighten the wire rope until it is taut and provides adequate support for your string lights, preventing sagging.
9. **Attach String Lights:** Use the M3 Snap Hooks to attach your string lights to the tensioned wire rope at desired intervals. The provided zip ties can also be used for additional securing.
10. **Final Check:** Inspect all connections and tension points to ensure stability and security before powering on your string lights.

String Light Guide Wire Kit

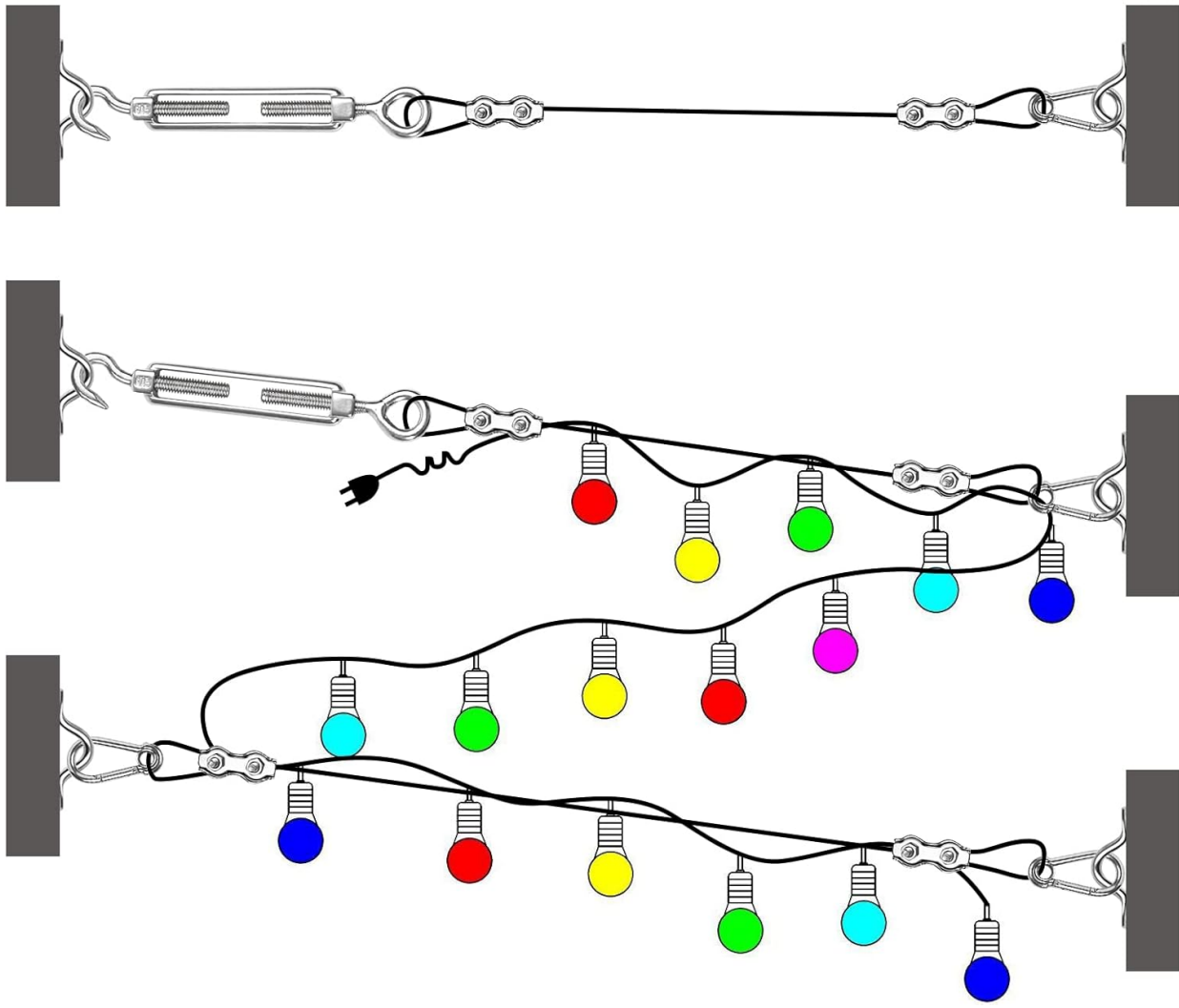


Image 4.1: Step-by-step diagram for installing the String Light Guide Wire Kit.

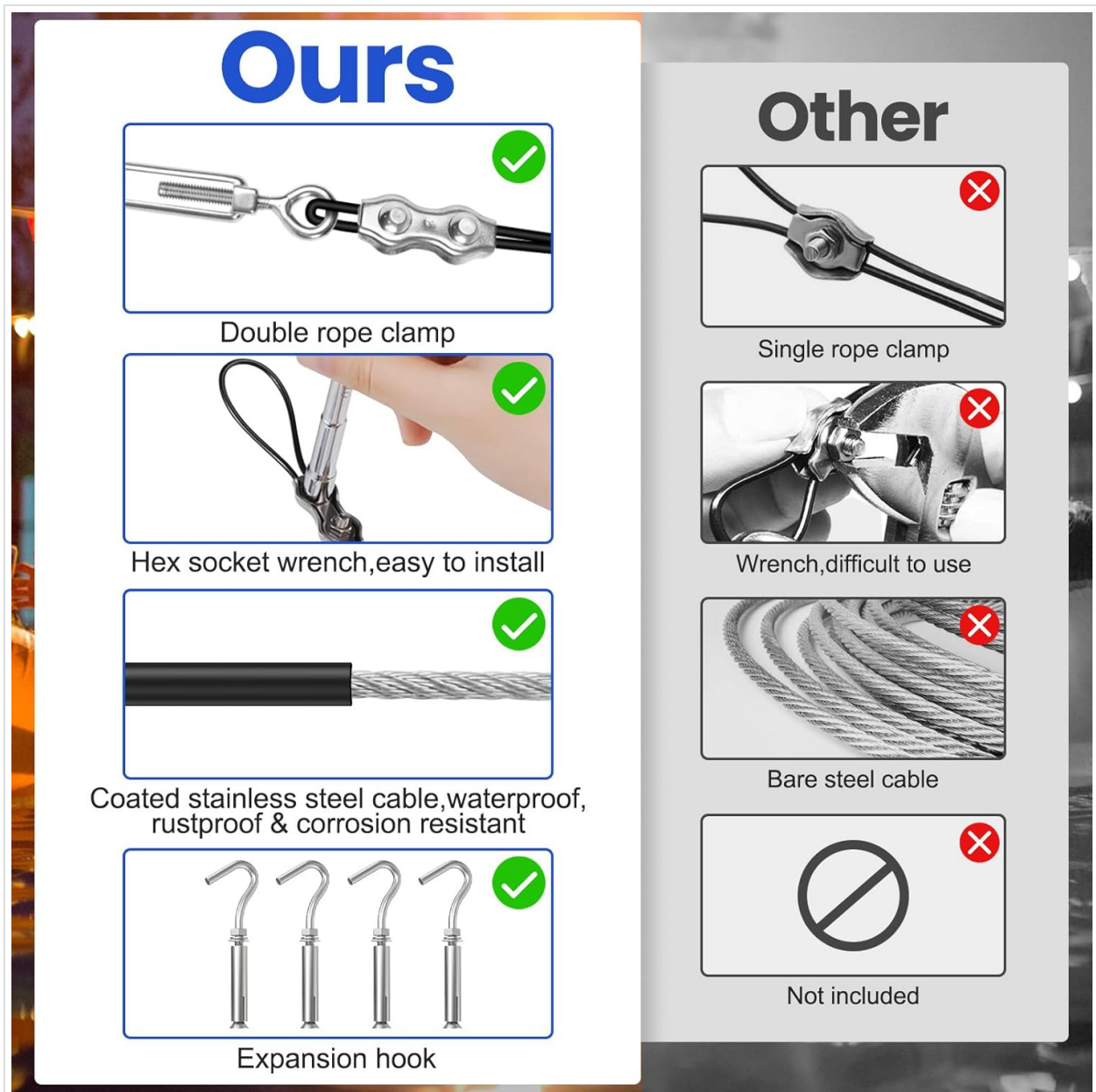


Image 4.2: Detailed view of key components like the double rope clamp and coated cable.

5. OPERATING INSTRUCTIONS

Once the BLIKA Globe String Light Suspension Kit is installed and your string lights are securely attached:

- **Power On/Off:** Operate your string lights according to their manufacturer's instructions. The suspension kit is a structural support system and does not control the electrical function of the lights.
- **Tension Adjustment:** If the wire rope sags over time due to environmental factors or weight, use the M5 Turnbuckles to re-tension the cable. Turn the body of the turnbuckle to either lengthen or shorten the assembly, thereby adjusting the cable tension.
- **Seasonal Use:** For seasonal installations, ensure the wire rope is properly tensioned at the beginning of each season. Consider loosening tension slightly during periods of heavy snow or ice to prevent excessive strain on anchor points, then re-tensioning afterward.



Image 5.1: Examples of string light installations using the suspension kit.

Most Popular Patio String Light Patterns

our kit has you covered with easy customization options.



Image 5.2: Popular patio string light patterns achievable with the kit.

6. MAINTENANCE

Regular maintenance ensures the longevity and safety of your BLIKA Globe String Light Suspension Kit:

- **Periodic Inspection:** Annually, or more frequently in harsh weather conditions, inspect the entire system. Check the wire rope for fraying, kinks, or damage to the coating. Examine all clamps, turnbuckles, snap hooks, and anchor points for corrosion, looseness, or wear.
- **Cleaning:** Clean the wire rope and components with a damp cloth to remove dirt and debris. Avoid abrasive cleaners.
- **Lubrication:** Lightly lubricate the threads of the turnbuckles if they become stiff to adjust.
- **Component Replacement:** If any component shows significant wear, damage, or corrosion, replace it immediately with compatible parts to maintain system integrity.

7. TROUBLESHOOTING

- **Problem:** String lights are sagging after installation.

Solution: Use the M5 Turnbuckles to increase the tension on the wire rope. Ensure the anchor points are secure.

- **Problem:** Wire rope appears loose or has shifted.

Solution: Check all M3 Double Rope Clamps and M5 Turnbuckles for proper tightening. Re-tighten as necessary. Verify anchor points are still firm.

- **Problem:** Difficulty adjusting turnbuckles.

Solution: Apply a small amount of lubricant to the threads of the turnbuckle. Ensure the turnbuckle is not overtightened or cross-threaded.

- **Problem:** Rust or corrosion on components.

Solution: While the kit uses 304 stainless steel for rust resistance, extreme conditions can still cause issues. Clean affected areas. If corrosion is significant, replace the component.

8. SPECIFICATIONS

Material	304 Stainless Steel (Coated)
Wire Rope Construction	7 x 7 strands
Bare Wire Rope Outer Diameter (OD)	1/16 inch
Coated Wire Rope Outer Diameter (OD)	3/32 inch
Breaking Strength	480 lbs
Included Components	Coated Stainless Steel Cable, M5 Turnbuckles, M3 Snap Hooks, M3 Hump Screws, M3 Double Rope Clamps, Screws, Plastic Anchors, Expansion Hooks, Wrench, Screwdriver, Zip Ties
Batteries Required	No
ASIN	B0CQR116VL
Manufacturer	BLIKA
Date First Available	January 21, 2025

9. WARRANTY AND SUPPORT

BLIKA offers a satisfaction guarantee for this product. If you are not satisfied with this item at any time within one month of purchase, BLIKA will provide a refund or replacement. For further assistance or inquiries, please refer to your purchase documentation or contact BLIKA customer support.

