

Giantex GX61400-HW

Giantex 5 Piece Dining Table Set

MODEL: GX61400-HW

[Contents](#) [Setup](#) [Operation](#) [Maintenance](#) [Safety Information](#) [Troubleshooting](#) [Package](#) [Specifications](#) [Warranty & Support](#)

1. Safety Information

Please read and understand all safety warnings before assembly and use of this dining set. Failure to follow these instructions may result in injury or damage to the product.

- Exercise caution around sharp edges when the product is not in use.
- Do not place hot items directly on the tempered glass tabletop without protective mats.
- Do not exceed the weight capacity of **44 lbs** for the table.
- Do not exceed the weight capacity of **220 lbs** per chair.
- Always follow the assembly instructions carefully to ensure stability and safety.
- Keep small parts away from children during assembly.

2. Package Contents

Verify that all components are present before beginning assembly.

- 1 x Dining Table
- 4 x Chairs
- 1 x Instruction Manual (this document)
- Assembly Hardware (screws, bolts, Allen wrench, etc.)



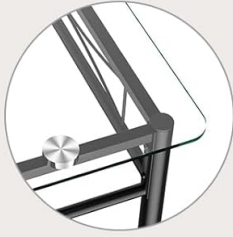
Image: Overview of the Giantex 5 Piece Dining Table Set, showing the rectangular glass table and four black upholstered chairs.

3. Setup and Assembly

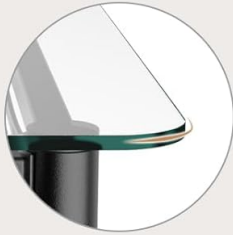
The Giantex 5 Piece Dining Table Set is designed for straightforward assembly. Please refer to the separate detailed instruction sheet included in your package for step-by-step guidance.

1. **Unpack Components:** Carefully remove all parts from the packaging and lay them out on a clean, soft surface to prevent scratches.
2. **Assemble Table Frame:** Follow the instructions to connect the metal frame components for the dining table. Ensure all screws are tightened securely.
3. **Attach Tempered Glass Top:** Carefully place the tempered glass tabletop onto the assembled table frame. Secure it using the provided fasteners or suction cups as indicated in the manual.
4. **Assemble Chairs:** For each chair, attach the seat and backrest to the metal frame. Ensure all connections are firm and stable.
5. **Final Check:** Once assembled, gently shake the table and chairs to ensure stability. Retighten any loose screws if necessary.

High Quality Rectangular Dining Table



Durable Tempered
Glass Tabletop



Round Corners
for Safety



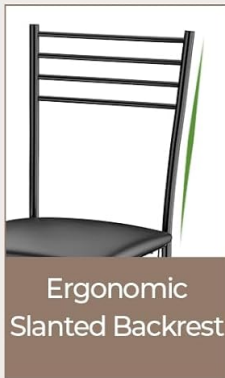
Reinforced
Metal Frame



Image: Detail of the tempered glass tabletop, highlighting its durable nature, round corners for safety, and the reinforced metal frame structure.



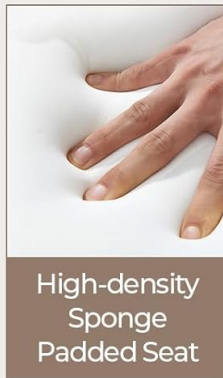
Comfortable Sitting Experience



Ergonomic
Slanted Backrest



Skin-friendly
PU Leather



High-density
Sponge
Padded Seat



Image: Detailed view of a chair, illustrating its ergonomic slanted backrest, skin-friendly PU leather upholstery, and high-density sponge padded seat for comfort.

Video: An official product video demonstrating the features and assembly of the Giantex 5 Piece Dining Table Set, including its space-saving design and comfortable seating.

4. Operation and Usage

This 5-piece dining set is designed for versatile use in various settings such as kitchens, dining rooms, breakfast nooks, and apartments. Its modern and simple design complements diverse home decors.

- **Daily Meals:** Use the table and chairs for everyday dining, offering a comfortable and stable surface for meals.
- **Space-Saving Design:** The chairs are designed to be conveniently tucked away underneath the table when not in use, maximizing available floor space in smaller areas.
- **Versatile Arrangements:** The lightweight chairs can be easily moved and arranged to suit different needs, whether for dining, work, or other activities.

Space-saving Design

4 chairs can be tucked away under the table after the meal



Image: An illustration demonstrating the space-saving feature of the dining set, showing how the four chairs can be neatly tucked under the table.

5. Maintenance and Care

Proper care will ensure the longevity and appearance of your dining set.

- **Cleaning the Tabletop:** The tempered glass tabletop is easy to clean. Simply wipe it with a dry cloth or a damp cloth with mild glass cleaner. Avoid abrasive cleaners that may scratch the surface.
- **Cleaning Chairs:** The PU leather cover on the chair seats can be wiped clean with a damp cloth. For the metal frames, use a dry cloth to remove dust.
- **Regular Inspection:** Periodically check all screws and bolts to ensure they remain tight. Tighten if necessary to maintain stability.
- **Avoid Harsh Chemicals:** Do not use harsh chemicals or solvents on any part of the dining set, as this may damage the materials.

6. Troubleshooting

If you encounter any issues with your dining set, consider the following common solutions:

- **Wobbly Table/Chairs:** Ensure all assembly hardware is securely tightened. Uneven floors can also cause wobbling; try adjusting the furniture's position or using furniture pads.
- **Scratches on Glass:** Minor scratches on tempered glass can sometimes be minimized with specialized glass repair kits. For deeper scratches, professional repair or replacement may be necessary.
- **Stains on PU Leather:** For most stains, a damp cloth with mild soap should suffice. Test any cleaning solution on an inconspicuous area first.

7. Specifications

Color	Black
Material	Metal, Tempered Glass, PU, Sponge
Overall Dimensions of Table	43.5" x 27.5" x 30" (L x W x H)
Overall Dimensions of Each Chair	17" x 16" x 34" (L x W x H)
Thickness of Tabletop	0.3"
Weight Capacity of Table	44 lbs
Weight Capacity of Each Chair	220 lbs
Net Weight	67 lbs
Style	Modern

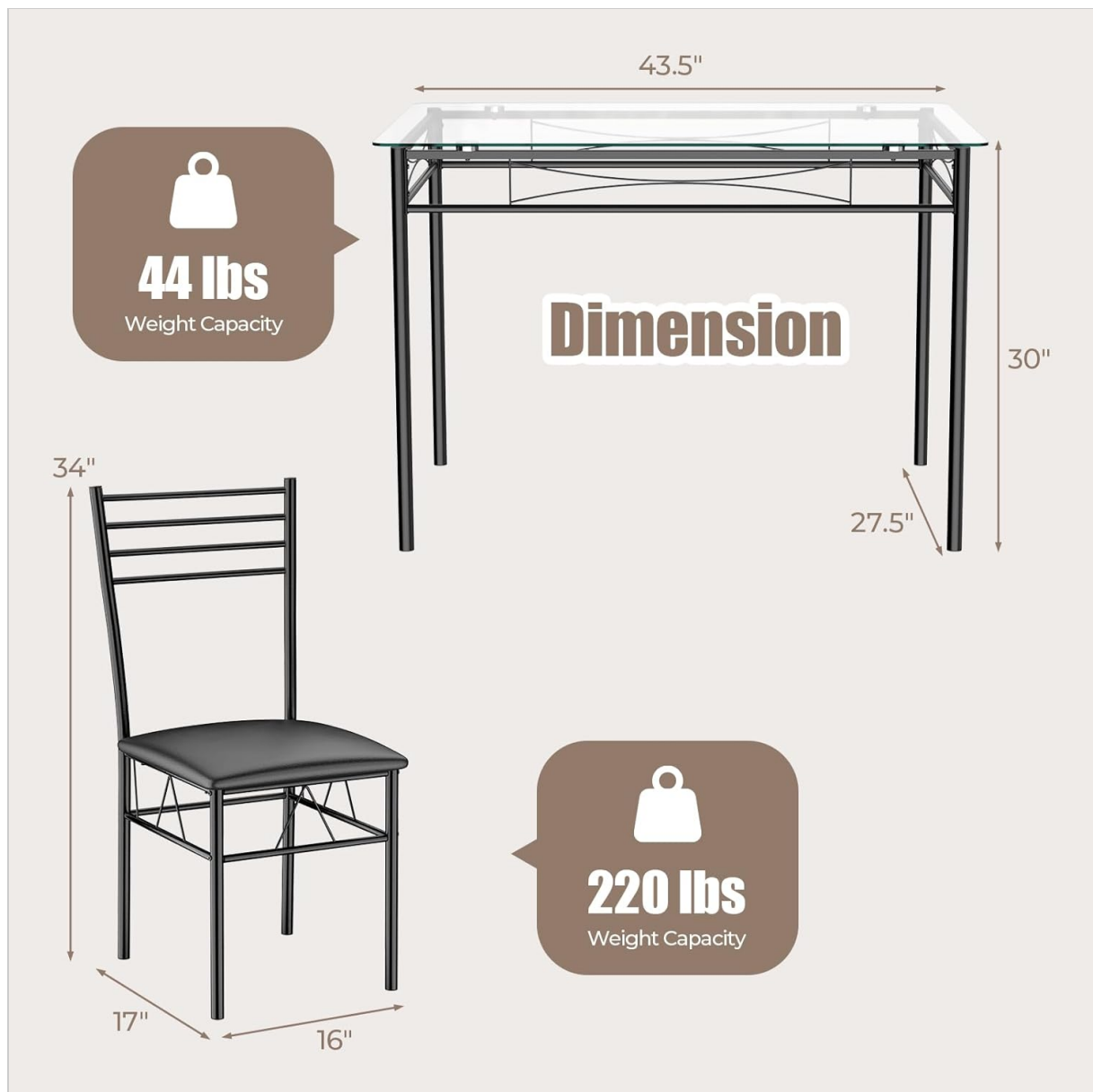


Image: A diagram illustrating the key dimensions (length, width, height) and weight capacities for both the dining table and individual chairs.

8. Warranty and Support

For specific warranty information regarding your Giantex 5 Piece Dining Table Set, please refer to the documentation included with your purchase or contact the retailer where the product was acquired.

Warranty terms and conditions may vary.

For product support, including assistance with assembly, missing parts, or operational questions, please contact Giantex customer service through their official website or the contact information provided in your purchase documentation.