

MAGIC-REFINER AKL680

MAGIC-REFINER RKL680 Ultra-Thin Wireless Mechanical Keyboard User Manual

Model: AKL680

1. INTRODUCTION

The MAGIC-REFINER AKL680 is an ultra-thin wireless mechanical keyboard designed for versatility and comfort. It features an updated low-latency wireless chip, enabling connection to up to three wireless devices simultaneously: one via 2.4G wireless and two via Bluetooth. The compact 68-key layout prioritizes practicality, including a full set of arrow keys and frequently used control keys. This keyboard is battery-powered (batteries not included) and offers extended usage thanks to its smart hibernation function and non-backlit design.

This manual provides essential information for setting up, operating, and maintaining your keyboard.

2. PACKAGE CONTENTS

- 1 x MAGIC-REFINER AKL680 Wireless Mechanical Keyboard
- 1 x Keycap Puller
- 1 x USB Receiver (2.4G dongle)
- 1 x User Manual

3. PRODUCT OVERVIEW

DUAL MODE WIRELESS & BLUETOOTH KEYBOARD



Extremely
Thin



Low-Profile
Switch



60%
Layout



2 Mode
Connection



Connect Up to
3 Devices



For
Mac & Windows



3 Tilt
Angles



Separate
Arrow Keys

Image 3.1: The MAGIC-REFINER RKL680 keyboard showcasing its dual wireless modes and compact design with low-profile switches and adjustable tilt angles.

Key Features:

- **Ultra-Thin Design:** Slim profile and lightweight (450g) for portability and reduced wrist strain.
- **Dual Wireless Modes:** Supports 2.4 GHz wireless and Bluetooth 5.0 connectivity.
- **Multi-Device Connectivity:** Connects up to three devices simultaneously (1 x 2.4G, 2 x Bluetooth).
- **68-Key Layout:** Compact yet practical, including dedicated arrow keys and essential control keys.
- **Low-Profile Tactile Brown Switches:** Ensures faster response, easier typing, and quiet operation with tactile feedback.
- **Adjustable Tilt Angles:** Dual-stage kickstands provide 3 different typing angles for ergonomic comfort.

- **Durable Keycaps:** Double-shot ABS keycaps are oil and wear-resistant.
- **Wide System Compatibility:** Supports Windows XP/7/8/10/11, Mac OS, Android, and iOS.
- **Long Battery Life:** Non-backlit design and smart hibernation allow up to 6 months of use (batteries not included).

4. SETUP

4.1 Battery Installation



Image 4.1: The keyboard requires two AAA batteries, which are not included in the package. Locate the battery compartment on the underside of the keyboard.

1. Locate the battery compartment cover on the underside of the keyboard.
2. Gently slide or open the cover.

3. Insert two AAA batteries, ensuring correct polarity (+/-).
4. Close the battery compartment cover securely.

4.2 Connectivity

**3 DEVICES
OF SIMULTANEOUS CONNECTIONS**

1*Fast 2.4G hz Wireless(FN+Q)
Enjoy the True Cable-free Mobile Working

2*Low-Latency Bluetooth 5.0(FN+W/E)
Bluetooth Pairing Name:AKL6801/AKL6802

Image 4.2: The keyboard supports simultaneous connections to up to three devices using 2.4GHz wireless and Bluetooth 5.0.

2.4 GHz Wireless Mode:

1. Locate the USB receiver (dongle) in the package.
2. Plug the USB receiver into an available USB-A port on your computer.
3. On the keyboard, press **Fn + Q** to switch to 2.4G wireless mode. The keyboard should automatically connect.

Bluetooth Mode (up to 2 devices):

1. On the keyboard, press **Fn + W** or **Fn + E** to select a Bluetooth channel.
2. The keyboard will enter pairing mode.
3. On your device (PC, laptop, smartphone, tablet), open Bluetooth settings.
4. Search for available devices and select "AKL680" or "AKL6802" (depending on the channel selected) to pair.
5. Once paired, the keyboard will be connected. Repeat for a second Bluetooth device using the other channel.

4.3 System Switching (Windows/Mac)



Image 4.3: The keyboard supports both Windows and Mac operating systems, allowing seamless switching.

The keyboard features a toggle switch to adapt its layout for Windows or Mac OS. Locate the switch on the back or side of the keyboard and set it to the appropriate operating system for optimal key functionality.

5. OPERATING INSTRUCTIONS

5.1 FN Key Combinations

The Function (Fn) key allows access to secondary functions printed on certain keys. Press and hold the **Fn** key, then press the desired function key.

- **Fn + Q:** Switch to 2.4G wireless mode.
- **Fn + W:** Switch to Bluetooth device 1.
- **Fn + E:** Switch to Bluetooth device 2.
- Other Fn combinations may be indicated on the keycaps for multimedia control or system functions (e.g., F1-F12, volume control).

5.2 Ergonomic Adjustment

DOUBLE KICK-UP FEET FOR 3 TILT ANGLES

Excellent Comfort and Stability

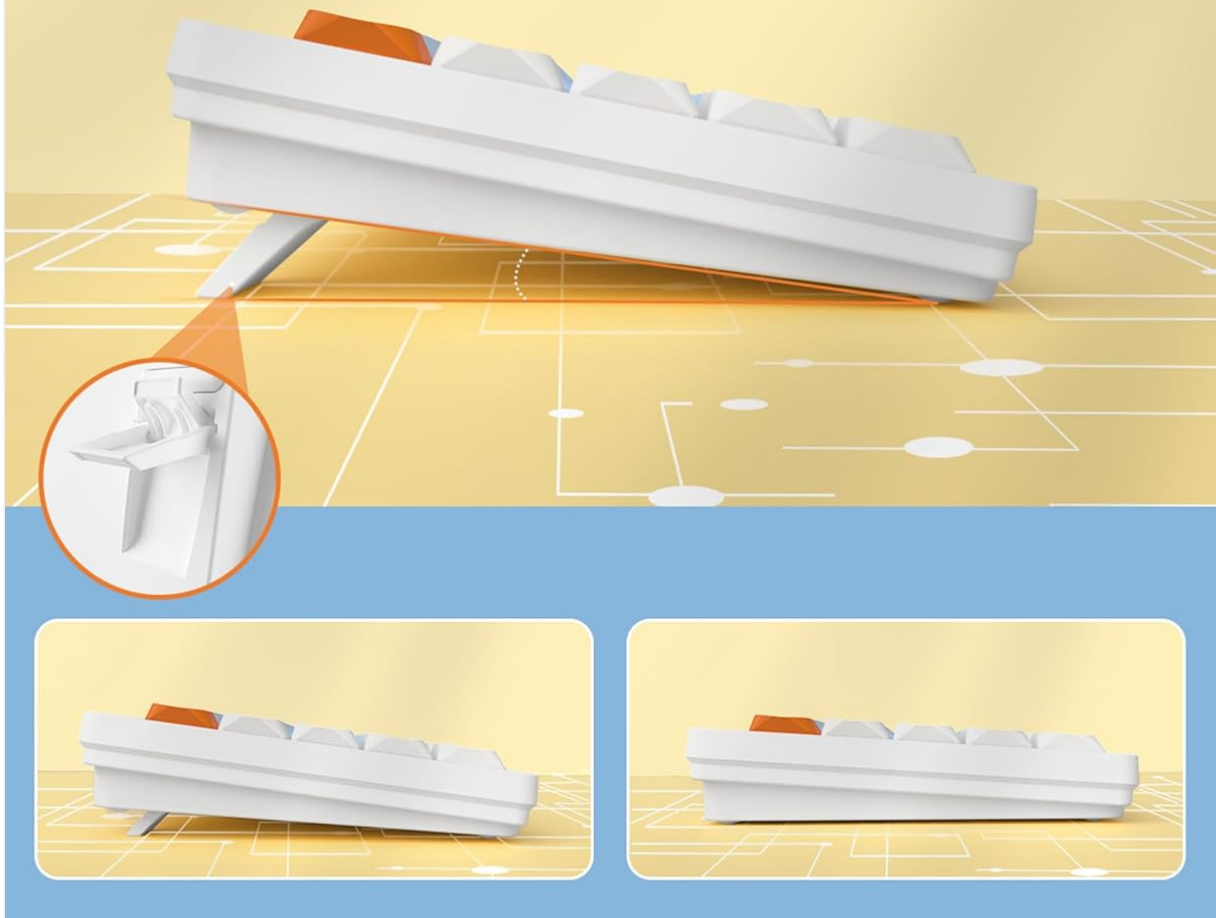


Image 5.1: The keyboard features dual-stage kickstands for three adjustable tilt angles, enhancing typing comfort.

The keyboard is equipped with dual-stage kickstands on its underside. Extend these feet to adjust the typing angle to one of three available positions, optimizing comfort and reducing wrist strain during prolonged use.

6. MAINTENANCE

6.1 Cleaning the Keyboard

1. Turn off the keyboard and disconnect it from any devices.
2. Use a soft, lint-free cloth slightly dampened with water or a mild cleaning solution to wipe the keycaps and surface. Avoid excessive moisture.
3. For deeper cleaning, use the provided keycap puller to carefully remove keycaps. Clean the switches

and keyboard plate with compressed air or a small brush.

4. Ensure all parts are completely dry before reattaching keycaps and using the keyboard.

6.2 Battery Replacement

When the keyboard's performance degrades or it stops responding, it may be time to replace the batteries. Follow the steps in Section 4.1 to replace the two AAA batteries.

7. TROUBLESHOOTING

- **Keyboard not responding:**

- Ensure batteries are correctly installed and have sufficient charge. Replace if necessary.
- Check that the keyboard is powered on.
- Verify the correct connection mode (2.4G or Bluetooth) is selected using Fn+Q or Fn+W/E.
- For 2.4G mode, ensure the USB receiver is securely plugged into your device. Try a different USB port.
- For Bluetooth mode, ensure Bluetooth is enabled on your device and the keyboard is paired. Try re-pairing the keyboard.
- Ensure the system switch (Windows/Mac) is set correctly for your operating system.

- **Intermittent connection or lag:**

- Move the keyboard closer to your device to reduce interference.
- Avoid using the keyboard near other wireless devices that may cause interference.
- Ensure your device's drivers are up to date.

- **Specific keys not working:**

- Carefully remove the keycap using the keycap puller and check for any debris obstructing the switch. Clean if necessary.
- Ensure the keycap is properly seated on the switch.

8. SPECIFICATIONS



Image 8.1: Detail of the low-profile design and mechanical switches, highlighting the slim profile.

Brand	MAGIC-REFINER
Model Number	AKL680
Color	Blue (silent brown switches)
Number of Keys	68
Connectivity Technology	2.4 GHz Wireless / Bluetooth 5.0
Compatible Devices	Laptop, PC, Smartphone, Tablet
Operating System Support	Windows XP/7/8/10/11, Mac OS, Android, iOS

Keyboard Dimensions	31.2L x 10.2W x 4.2H centimeters (approx. 12.3 x 4 x 1.65 inches)
Material	Plastic or aluminum
Special Features	Lightweight, Ultra-thin, Low-profile switches, Adjustable tilt angles
Power Source	2 x AAA Batteries (not included)
Lighting Effects	Non-backlit

9. WARRANTY AND SUPPORT

For warranty information and technical support, please refer to the documentation provided with your purchase or contact MAGIC-REFINER customer service through their official website or the retailer where the product was purchased.