



[Manuals.plus](#) /

> [anwickjeff](#) /

> anwickjeff Self Cleaning Cat Litter Box User Manual

anwickjeff 5122595

anwickjeff Self Cleaning Cat Litter Box User Manual

Model: 5122595

1. INTRODUCTION

Thank you for choosing the anwickjeff Self Cleaning Cat Litter Box. This automatic litter box is designed to provide a convenient and hygienic solution for cat waste management, featuring smart controls, advanced safety mechanisms, and effective odor removal. Please read this manual thoroughly before operating the device to ensure proper use and maintenance.

2. SAFETY INFORMATION

Your safety and the safety of your pet are paramount. Please observe the following precautions:

- **Power Supply:** Use only the provided power adapter. Ensure the power outlet matches the specified voltage.
- **Water Exposure:** Do not immerse the unit in water or expose it to excessive moisture. This product is for indoor use only.
- **Child and Pet Safety:** Keep children and pets away from the moving parts during operation. The unit is equipped with gravity sensors, infrared sensors, and an anti-pinch design to stop operation if a cat is detected, but supervision is always recommended.
- **Maintenance:** Always unplug the device before cleaning or performing any maintenance.
- **Litter Type:** Use only clumping cat litter suitable for automatic litter boxes. Avoid non-clumping, crystal, or silica gel litters as they may interfere with the cleaning mechanism.
- **Weight Limit:** This smart litter box is suitable for cats up to 17.64 lbs (8 kg).

Built in high-precision sensor

Weight sensors & approach sensors protect the cats from getting hurt



Figure 2.1: Built-in high-precision sensors, including weight and approach sensors, protect cats from injury by stopping operation when a cat is detected near the entrance or on the unit.

3. WHAT'S IN THE BOX

Carefully unpack all components and ensure everything listed below is present and in good condition:

- Self Cleaning Cat Litter Box x 1
- Power Adapter x 1
- Baffle Plate x 1
- Garbage Bags x 1 roll
- Cleaning Brush x 1
- User Manual x 1

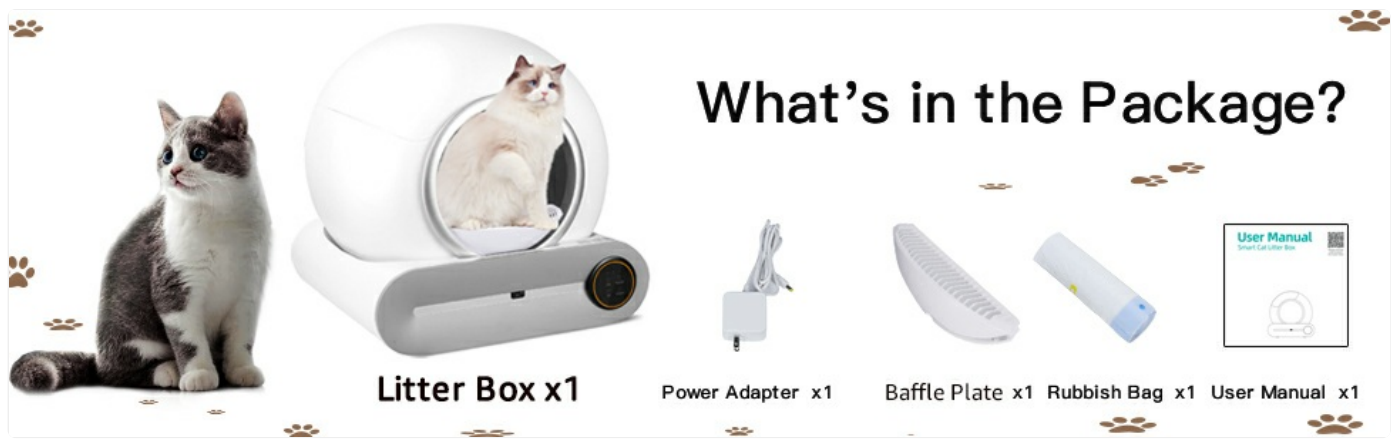


Figure 3.1: Contents of the anwickjeff Self-Cleaning Cat Litter Box package.

4. SETUP GUIDE

Follow these steps to set up your new automatic cat litter box:

1. **Placement:** Choose a flat, stable surface for the litter box. Ensure there is enough space around the unit for proper ventilation and access.
2. **Assemble Components:** If any parts like the baffle plate are separate, install them according to the diagrams in the quick start guide.
3. **Install Waste Bag:** Open the waste collection bin and line it with one of the provided garbage bags. Ensure the bag is securely fitted to prevent leaks.
4. **Add Cat Litter:** Pour clumping cat litter into the main litter compartment. Do not exceed the 'MAX' fill line. The unit is compatible with various types of clumping litter, including bean curd, mixed, bentonite, and mineral litter.
5. **Connect Power:** Plug the power adapter into the unit and then into a wall outlet. The unit will power on and perform an initial calibration.
6. **App Connection (Optional but Recommended):** Download the companion app (compatible with 2.4GHz/5GHz Wi-Fi). Follow the in-app instructions to connect your device for remote control and monitoring.



Figure 4.1: The anwickjeff Self Cleaning Cat Litter Box ready for use, with app control shown.

Suitable for various cat litter

Adapted to various cat litter, specially designed crystal lattice filters can effectively screen and filter clusters and particles of different sizes



Figure 4.2: The litter box is suitable for various cat litter types, including bean curd, mixed, bentonite, and mineral litter, thanks to its specially designed crystal lattice filters.

5. OPERATING INSTRUCTIONS

The anwickjeff Self Cleaning Cat Litter Box offers multiple operating modes for your convenience:

5.1 Control Panel Operation

The intuitive control panel allows for direct interaction with the device.

Easy To Use & Clean

Automatic Sensor Cleaning, Timed Cleaning, One-click Cat Litter Change, and Clean Smell Mode. No more scooping!

Smart automatic litter box is effortless, it only comes in two parts: the litter cylinder and the base, pretty easy to assemble and disassemble.



Figure 5.1: Easy to Use & Clean: The control panel allows for various operations, and the design facilitates simple waste bag replacement and litter refilling.

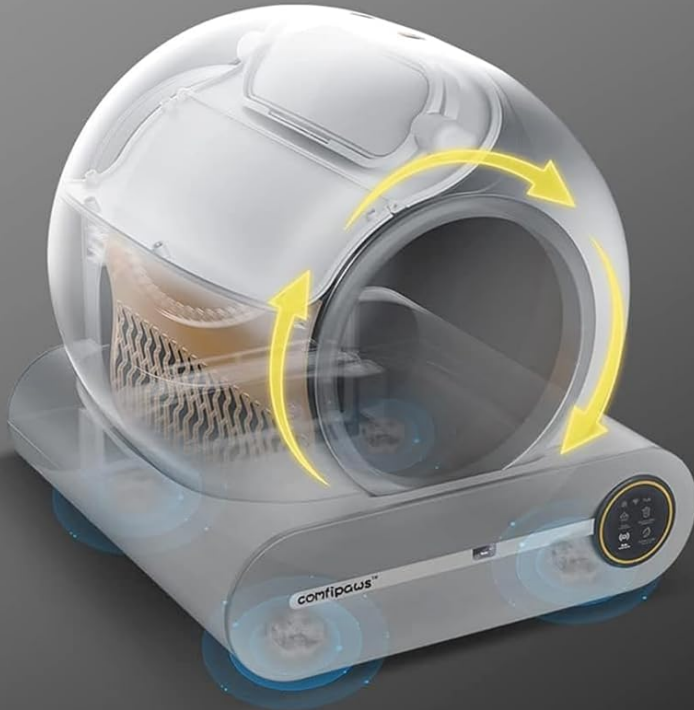
5.2 App Control & Modes

For enhanced control and monitoring, use the dedicated mobile application.

- **Real-Time Monitoring:** Monitor your cat's litter box usage frequency, time, and weight through the app.
- **Cleaning Modes:** Choose from Auto, Manual, Timer, and Empty modes.
 - **Auto Mode:** The litter box automatically cleans after your cat uses it.
 - **Scheduled Mode (Timer):** Set specific times for cleaning cycles.
 - **Manual Mode:** Initiate a cleaning cycle manually via the app or control panel.
 - **Empty Mode (One-click Empty Litter):** Fully empties the litter for deep cleaning or litter change.
- **Sleep Mode:** Activate sleep mode to prevent cleaning cycles during specific hours, ensuring a disturbance-free environment.

- **Child Lock:** Enable the child lock feature to prevent accidental operation by children or curious pets.
- **Multi-User Sharing:** Share control of the device with multiple family members.

INNOVATIVE SCOOPING TECHNOLOGY FREE YOUR HANDS



Auto Mode

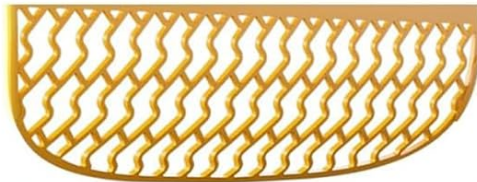
Scheduled Mode

Manual Mode

Remote Mode

One-click Empty Litter

COMPATIBLE WITH
MULTIPLE CAT LITTERS



Bean Curd Litter



Mixed Litter



Bentonite Litter



Mineral Litter

AUTOMATIC SWITCHABLE DOOR
Seal the Odor and Pre-vent Leakage

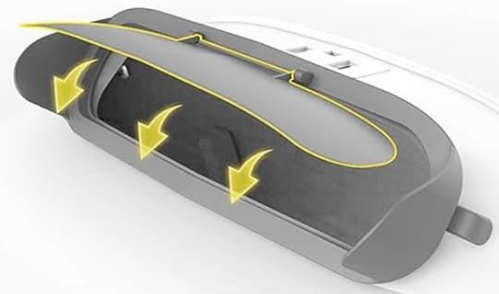


Figure 5.2: Innovative scooping technology and various operational modes for convenience.

Disturbance free mode

It is possible to set the undisturbed mode, and sleep time does not work



Figure 5.3: Disturbance-free mode allows setting specific times when the litter box will not operate, ideal for nighttime.

5.3 Odor Removal System

The litter box is equipped with an advanced odor removal system:

- **Exhaust Duct:** Integrated exhaust duct for air circulation.
- **Negative Ion Deodorization:** Utilizes negative ions to neutralize odors.
- **Intelligent Exhaust Technology:** Optimizes air flow for effective odor control.
- **Activated Carbon Slots:** Provides slots for placing activated carbon to further absorb odors.

Efficient deodorization

Eliminates Up To 99.8% of Smells



Figure 5.4: Efficient deodorization system, eliminating up to 99.8% of smells.

6. MAINTENANCE

Regular maintenance ensures optimal performance and longevity of your litter box.

6.1 Waste Bag Replacement

The 9L waste bin can hold waste for up to 15 days for a single cat. For multiple cats, replacement frequency will vary.

1. Ensure the unit is in a stopped state or unplugged.
2. Open the waste collection bin compartment.
3. Carefully remove the full waste bag, ensuring not to spill contents. The touchless waste collection bag design allows for easy sealing.
4. Seal the bag and dispose of it according to local regulations.

5. Place a new garbage bag securely in the bin.
6. Close the waste collection bin compartment.



Figure 6.1: Steps for easy waste bag replacement.

6.2 Cleaning the Unit

The unit features a 2-second quick disassembly design for easy cleaning.

- **Exterior Cleaning:** Wipe the exterior surfaces with a damp cloth and mild detergent. Avoid abrasive cleaners.
- **Interior Cleaning:** For deeper cleaning, remove the litter cylinder from the base. Clean the interior with pet-safe cleaning solutions. Ensure all parts are completely dry before reassembling.
- **Litter Falling Pedal & Mat:** Regularly clean the litter falling pedal and any associated cat litter mat to prevent litter tracking.

7. TROUBLESHOOTING

If you encounter issues with your anwickjeff Self Cleaning Cat Litter Box, refer to the table below for common problems and solutions.

Problem	Possible Cause	Solution
Unit not powering on	Power adapter not connected; power outlet issue.	Ensure power adapter is securely plugged into the unit and a working wall outlet.
Cleaning cycle not starting automatically	Sleep mode active; sensors obstructed; litter level too high/low.	Check app for sleep mode settings. Clean sensors. Adjust litter level.
Odor persists	Waste bin full; activated carbon needs replacement; poor ventilation.	Replace waste bag. Check/replace activated carbon. Ensure good air circulation in the room.
Litter spilling out	Too much litter; incorrect litter type; unit not level.	Do not overfill litter. Use recommended clumping litter. Ensure unit is on a flat surface.
App connectivity issues	Incorrect Wi-Fi band (not 2.4GHz/5GHz); weak signal; app outdated.	Ensure router is on 2.4GHz/5GHz. Move unit closer to router. Update app.

If the problem persists after trying these solutions, please contact customer support.

8. SPECIFICATIONS

Feature	Detail
Model Number	5122595
Dimensions (LxWxH)	22.63 x 21.73 x 25.39 inches (57.48 x 55.19 x 64.49 cm)
Item Weight	24.3 Pounds (11.02 kg)
Litter Compartment Capacity	68L
Waste Collection Bin Capacity	9L
Material	Acrylonitrile Butadiene Styrene (ABS)
Color	White
Connectivity	2.4G/5G Wi-Fi Support
Safety Features	Gravity sensor, Infrared sensor, Hall sensor, Anti-pinch design, APP remote alarm
Noise Level	<40 dB during operation

SIZE



Figure 8.1: Product dimensions for the anwickjeff Self Cleaning Cat Litter Box.

Better space utilization

More Spacious Larger Waste Collection Bin



Figure 8.2: Better space utilization with a 65L capacity and a larger waste collection bin.

9. WARRANTY AND SUPPORT

The anwickjeff Self Cleaning Cat Litter Box comes with a 1-year limited warranty from the date of purchase. This warranty covers manufacturing defects and malfunctions under normal use.

9.1 Warranty Exclusions

The warranty does not cover:

- Damage caused by improper use, neglect, or accident.
- Damage from unauthorized repairs or modifications.
- Normal wear and tear.
- Damage from using incorrect litter types or exceeding weight limits.

9.2 Customer Support

For technical assistance, warranty claims, or any questions regarding your product, please contact anwickjeff customer support through the retailer's platform or visit the official anwickjeff store online.

Please have your model number (5122595) and purchase date ready when contacting support.

