

JOUNJIP Single-SQ-LeverLock-BRZ

JOUNJIP Single-Sided Mechanical Keyless Combination Lever Handle Door Lock

Model: Single-SQ-LeverLock-BRZ

Brand: JOUNJIP

INTRODUCTION

This manual provides detailed instructions for the installation, operation, and maintenance of your JOUNJIP Single-Sided Mechanical Keyless Combination Lever Handle Door Lock. This lock is designed for secure, keyless entry and is suitable for various door types. Please read these instructions thoroughly before installation and use to ensure proper function and longevity of your lock.

SAFETY INFORMATION

- Always wear appropriate safety gear, such as gloves and eye protection, during installation.
- Ensure all components are securely fastened before use.
- Do not attempt to modify the lock's internal mechanisms, as this may compromise security and void the warranty.
- Keep small parts away from children to prevent choking hazards.

PACKAGE CONTENTS

Verify that all components listed below are present in your package:

- 1 Keypad and 2 lever handles
- 1 Square Spindle + 2 Latch Size Options
- 2 Screw size options + 2 Extension Posts
- 8 Extra Code Change Pins + Tweezers
- Latch plate and Strike plate set

List of Parts JOUNJIP Good Home Locks 101SQ-BZ

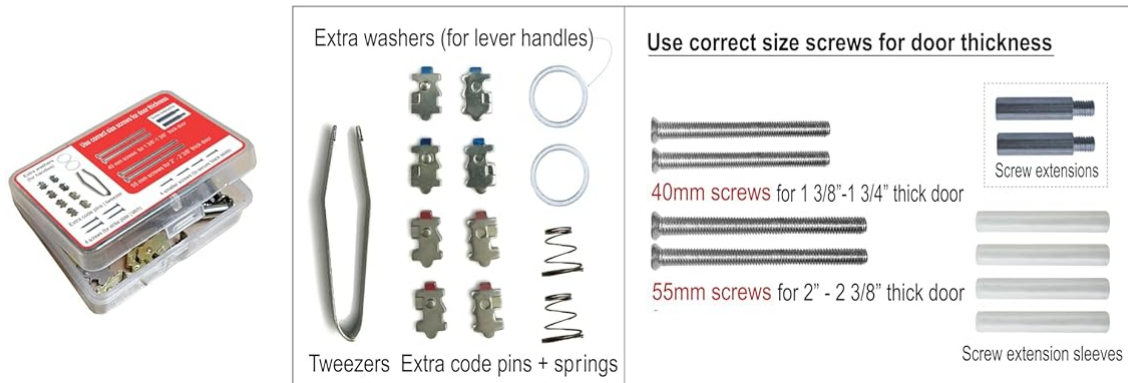


Figure 1: Overview of all components included in the JOUNJIP Single-Sided Mechanical Keyless Combination Lever Handle Door Lock package.

SPECIFICATIONS

Feature	Description
Material	Industrial-Grade Alloy Body and Lever Handles, Stainless Steel Screws, Watertight Rubber Seals
Color	Oil Rubbed Bronze
Product Dimensions	6.5"L x 2.5"W

Exterior Finish	Bronze
Specific Uses	Entry Door Lock
Special Feature	Outdoor weather proof (not salt water proof)
Lock Type	Combination Lock
Door Thickness Compatibility	1 3/8" - 2 3/8" (35-60mm)
Combinations	3500+ possible combinations, up to 9-digits
Batteries Required	No

SETUP AND INSTALLATION

The JOUNJIP keyless lock is designed for easier installation with its new square spindle design. It fits standard door thicknesses and offers flexibility with latch and screw options.

Door Thickness and Screw Selection

Ensure you select the correct screws and extension posts based on your door's thickness for a secure fit.

Works for 1 3/8" - 2 3/8" thick doors

Door Thickness		Extension Post & Screw
1 3/8" - 1 3/4" thick door	 1 3/8" 1 3/4"	<p>Use screw extensions + (40 mm) screws</p>
2" - 2 3/8" thick door	 2" 2 3/8"	<p>Use screw extensions + (55 mm) screws</p>

For doors more than 2 3/8" thick **search "JOUNJIP Square Spindle" on Amazon.com**

Figure 2: Guide for selecting appropriate screw lengths and extension posts for various door thicknesses (1 3/8" - 2 3/8").

Bore Hole and Clearance Requirements

The lock is designed to cover a standard 2 1/8" bore hole with its 2 1/2" black seal. Ensure sufficient

clearance around the lock for proper operation.



Figure 3: Illustration of the lock covering a standard $2 \frac{1}{8}''$ bore hole with a $2 \frac{1}{2}''$ seal.

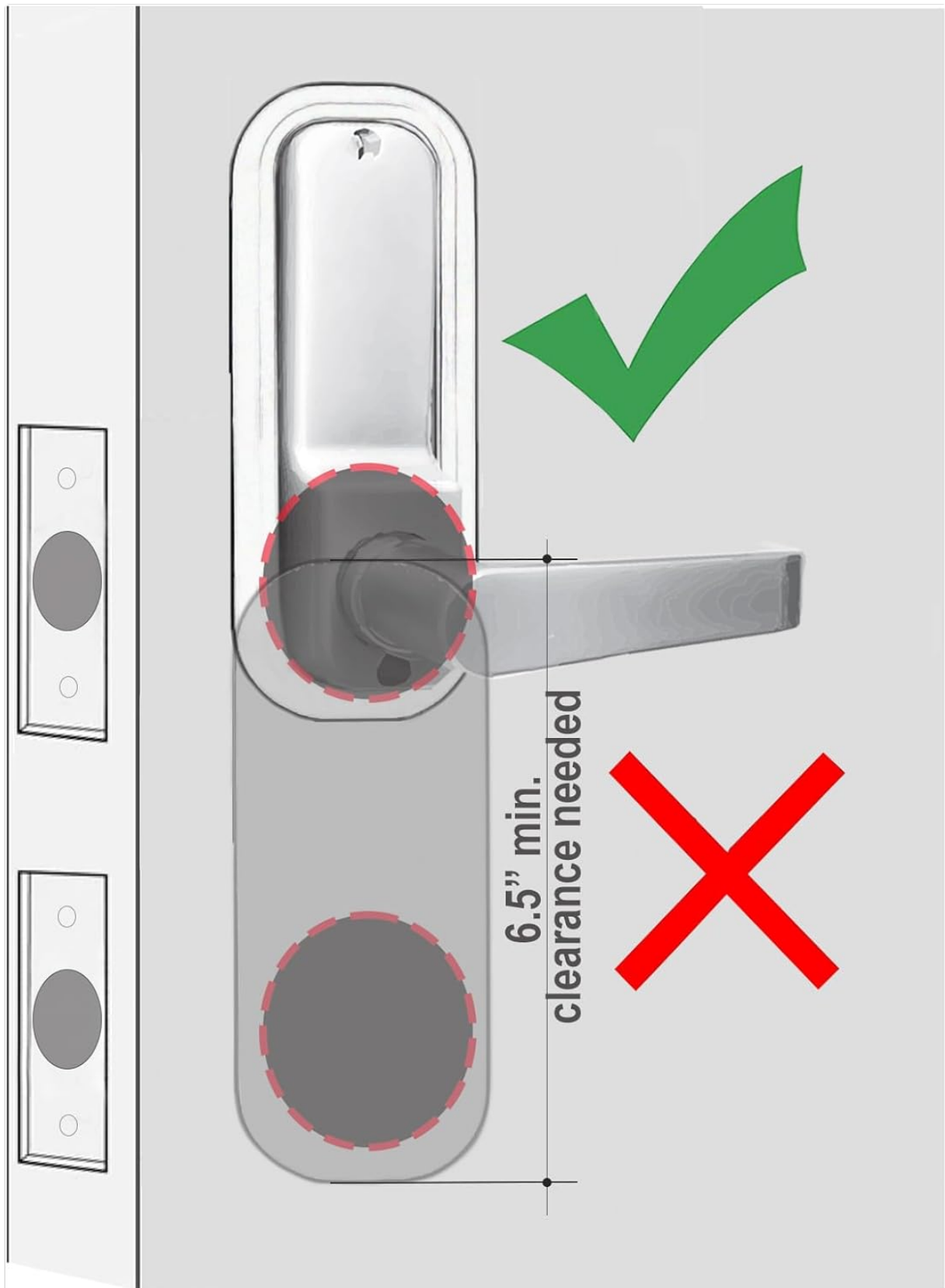


Figure 4: Minimum 6.5 inches of clearance is required for proper installation and operation of the lever handle.

Internal Components and Assembly

The lock features a combination keypad on the outside and a lever handle on the inside. The square spindle ensures smooth operation and improved durability.

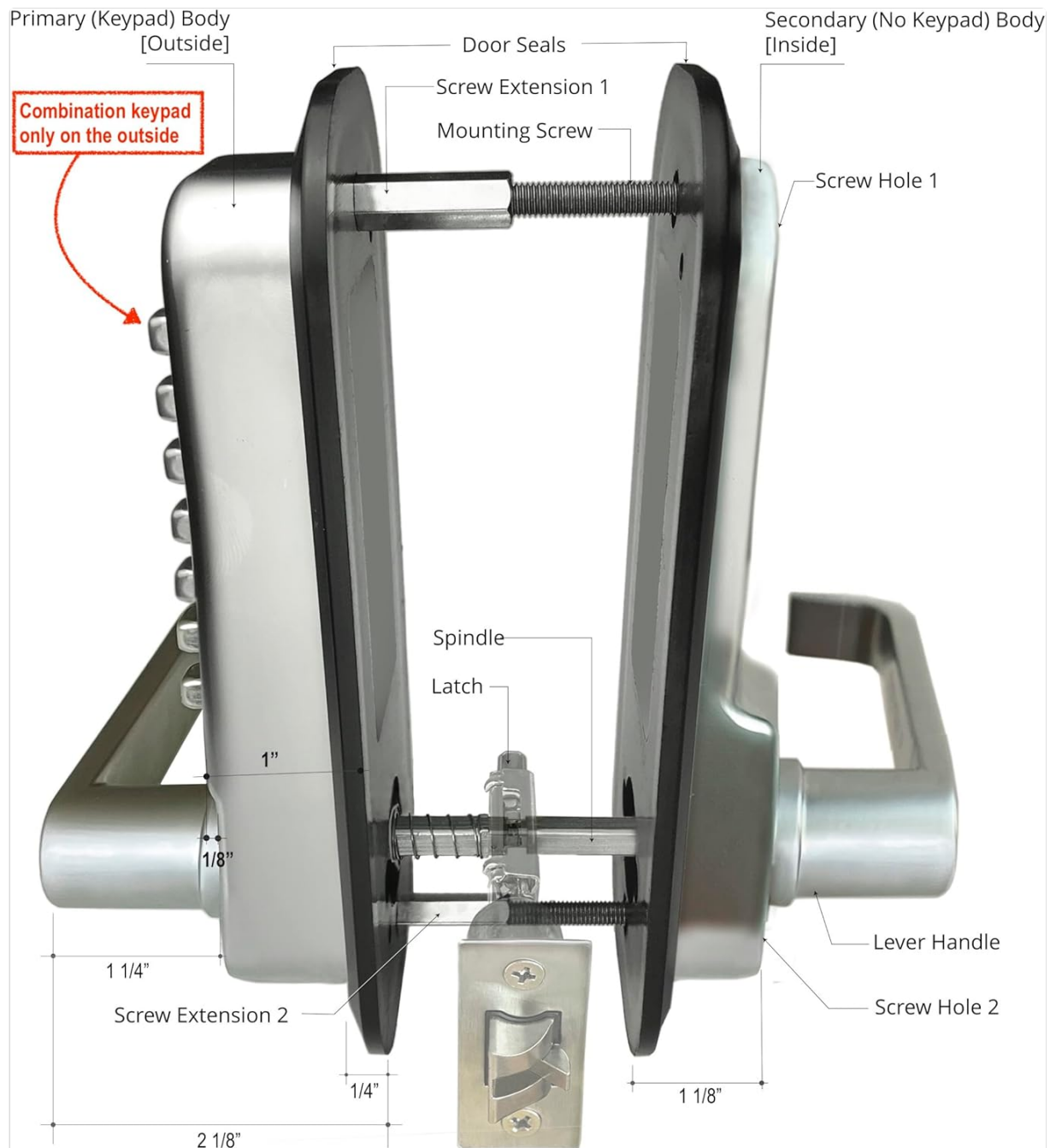


Figure 5: Detailed view of the lock's internal structure, including the primary keypad body, secondary body, door seals, spindle, latch, and screw extensions.

OPERATING INSTRUCTIONS

Entering a Passcode

To unlock the door, always press the "C" button before entering your passcode. The "C" button mechanically clears (resets) all previously pressed buttons. Then, enter your code (up to 9 digits) in any order. The lock is 100% mechanical and does not require batteries.



Figure 6: Always press the 'C' button to clear previous entries before inputting your passcode.

Passage Mode

The lock features a convenient "Passage Mode" function. This allows you to temporarily deactivate the code requirement for free access without needing to change the passcode. This is useful for periods of high traffic or events.

Refer to the detailed instructions provided with your lock for specific steps on how to activate and deactivate Passage Mode and how to change your combination.

MAINTENANCE

Your JOUNJIP keyless lock is constructed from industrial-grade alloy and stainless steel, designed for durability and outdoor use. While it is weather-proof, it is not salt-water proof.

Cleaning

To maintain the appearance and function of your lock, periodically clean the exterior. For outdoor

installations, dust and debris may accumulate. Simply spray it off with a hose and wipe it down with a soft cloth. Avoid using harsh chemicals or abrasive cleaners that could damage the finish.

Lubrication

While the lock is mechanical and generally low-maintenance, applying a small amount of silicone-based lubricant to the internal moving parts (such as the latch mechanism) once a year can help ensure smooth operation, especially in harsh environments.

TROUBLESHOOTING

Code Not Working

- Ensure you are pressing the "C" button firmly before entering your code.
- Verify that the correct code is being entered.
- Check if the Passage Mode is accidentally activated.

Lever Handle Feels Loose or Jiggles

- This may indicate that the mounting screws have loosened over time due to frequent use.
- Carefully tighten the mounting screws on both the interior and exterior sides of the lock. Do not overtighten.

Difficulty Turning Lever After Code Entry

- Ensure the latch is not obstructed in the door frame.
- Check for any debris or foreign objects within the lock mechanism.
- Consider applying a small amount of silicone lubricant to the latch and spindle if resistance persists.

WARRANTY AND SUPPORT

Your JOUNJIP Single-Sided Mechanical Keyless Combination Lever Handle Door Lock comes with a **1-Year Manufacturer Warranty**. This warranty covers defects in materials and workmanship under normal use.

THANK YOU

very much for giving us
the opportunity to serve you.



Figure 7: JOUNJIP offers American Tech Support and a 1-Year Manufacturer Warranty for this product.

Customer Support

For technical assistance, warranty claims, or any questions regarding your JOUNJIP product, please contact our American Tech Support team. Refer to the contact information provided on the product packaging or the official JOUNJIP website for the most up-to-date support details.