

## Gaoducash 4P-door sensor

# Gaoducash WiFi Door/Window Sensor (4-Pack) - Instruction Manual

Model: 4P-door sensor

## 1. INTRODUCTION

The Gaoducash WiFi Door/Window Sensor provides real-time monitoring of your doors and windows, enhancing home security and enabling smart home automation. This sensor operates wirelessly, connecting directly to your 2.4GHz WiFi network without requiring a separate hub. Receive instant alerts on your smartphone and integrate with voice assistants like Amazon Alexa and Google Assistant for convenient control and status checks.

## 2. PRODUCT FEATURES

- **WiFi Connectivity:** No hub required. Connects directly to your 2.4GHz WiFi network. (Note: Not compatible with 5G WiFi networks.)
- **App Alerts:** Receive instant notifications on your smartphone via the "Tuya Smart" or "Smart Life" app when a door or window opens or closes.
- **Voice Control:** Compatible with Amazon Alexa and Google Assistant. Ask for the status of your doors/windows (e.g., "Alexa, is the 'Device Name' Closed/Opened?").
- **Smart Home Automation:** Link with other Tuya smart devices to create automated scenes. For example, automatically turn on smart lights when a door opens.
- **Low Power Warning:** The app will send notifications when battery levels are low, reminding you to change batteries.
- **Easy Installation:** Mounts easily with included 3M adhesive stickers or screws.
- **Wide Application:** Suitable for gates, mailboxes, refrigerators, drawers, bedrooms, garages, yards, and pet doors.

## 3. PACKAGE CONTENTS

- 4 x Gaoducash WiFi Door/Window Sensors (main unit and magnetic strip)
- 8 x AAA Batteries (2 per sensor, pre-installed or included separately)
- Mounting Accessories (3M adhesive stickers, screws, and wall anchors)

- User Manual

## 4. SETUP AND INSTALLATION

### 4.1 App Download and Account Creation

1. Download the "Tuya Smart" or "Smart Life" app from your smartphone's app store (iOS or Android).
2. Register for a new account or log in if you already have one.

### 4.2 Device Pairing

1. Ensure your smartphone is connected to a 2.4GHz WiFi network.
2. Open the sensor's battery compartment and insert the two AAA batteries.
3. Use a pin to press and hold the reset button on the main sensor unit for approximately 3-5 seconds until the indicator light flashes rapidly. This indicates pairing mode.
4. Open the "Tuya Smart" or "Smart Life" app, tap the "+" icon (Add Device) in the top right corner.
5. The app should automatically discover the new device. If not, manually select "Contact Sensor" from the sensor category.
6. Follow the on-screen instructions to connect the sensor to your 2.4GHz WiFi network.
7. Once successfully added, you can rename the sensor for easy identification (e.g., "Front Door Sensor").

# Smart Alerts Notice

Get Instant Push Notification to Your Phone When Door Sensor Detects Activity



Image: Main sensor unit and magnetic strip.

# FAMILY SHARING CONTROL

Main account has the exclusive permissions,  
one click to share the permissions with the whole family.  
let the family enjoy the fun of smart life!

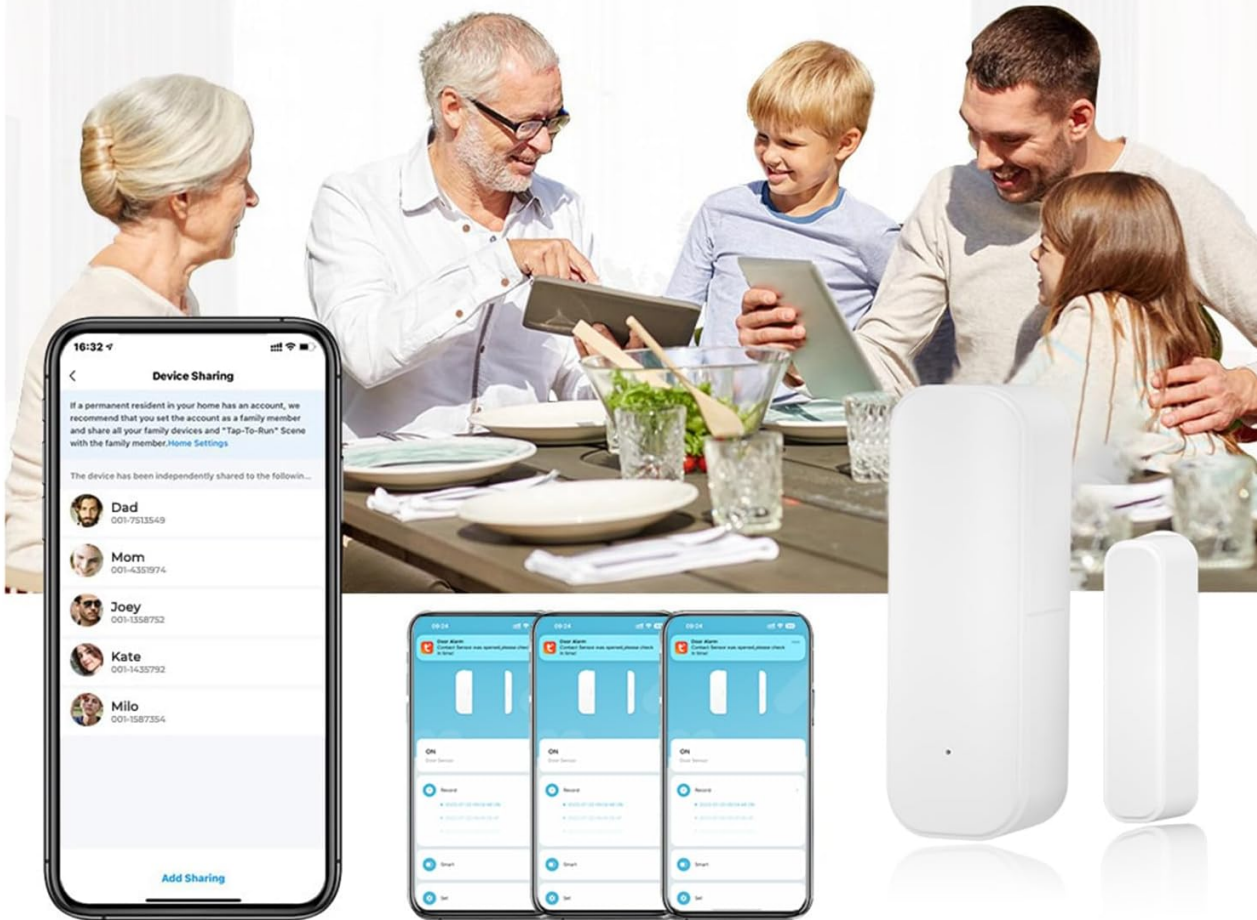


Image: App interface showing device pairing process and successful addition.

## 4.3 Physical Installation

1. Choose a clean, dry, and flat surface on your door/window frame and the moving part of the door/window.
2. Ensure the main sensor unit and the magnetic strip are aligned with each other, with a gap of no more than 10mm when the door/window is closed. The small alignment marks on both parts should face each other.
3. **Using 3M Adhesive:** Peel off the protective film from the back of both the main unit and the magnetic strip. Firmly press them onto the desired locations for at least 30 seconds.
4. **Using Screws:** If preferred for a more secure hold, use the provided screws and wall anchors to mount the sensor units. The main unit has a removable back plate for screw mounting.

# Lighting Automation

Create smart scene on Smart Life APP, your smart light can be automatically turned on when you open the door



Image: Proper installation of the door sensor on a door frame.



Image: Examples of door sensor installation in different environments.

## 5. OPERATING INSTRUCTIONS

### 5.1 Real-time Monitoring and Alerts

- Once installed and paired, the sensor will detect when the door or window is opened or closed.
- The "Tuya Smart" or "Smart Life" app will send instant push notifications to your smartphone for each event.
- You can view the history of open/close events within the app.

# Hands-free Voice Control

Through Alexa and Google Assistant, the door opening and closing status can be easily understood

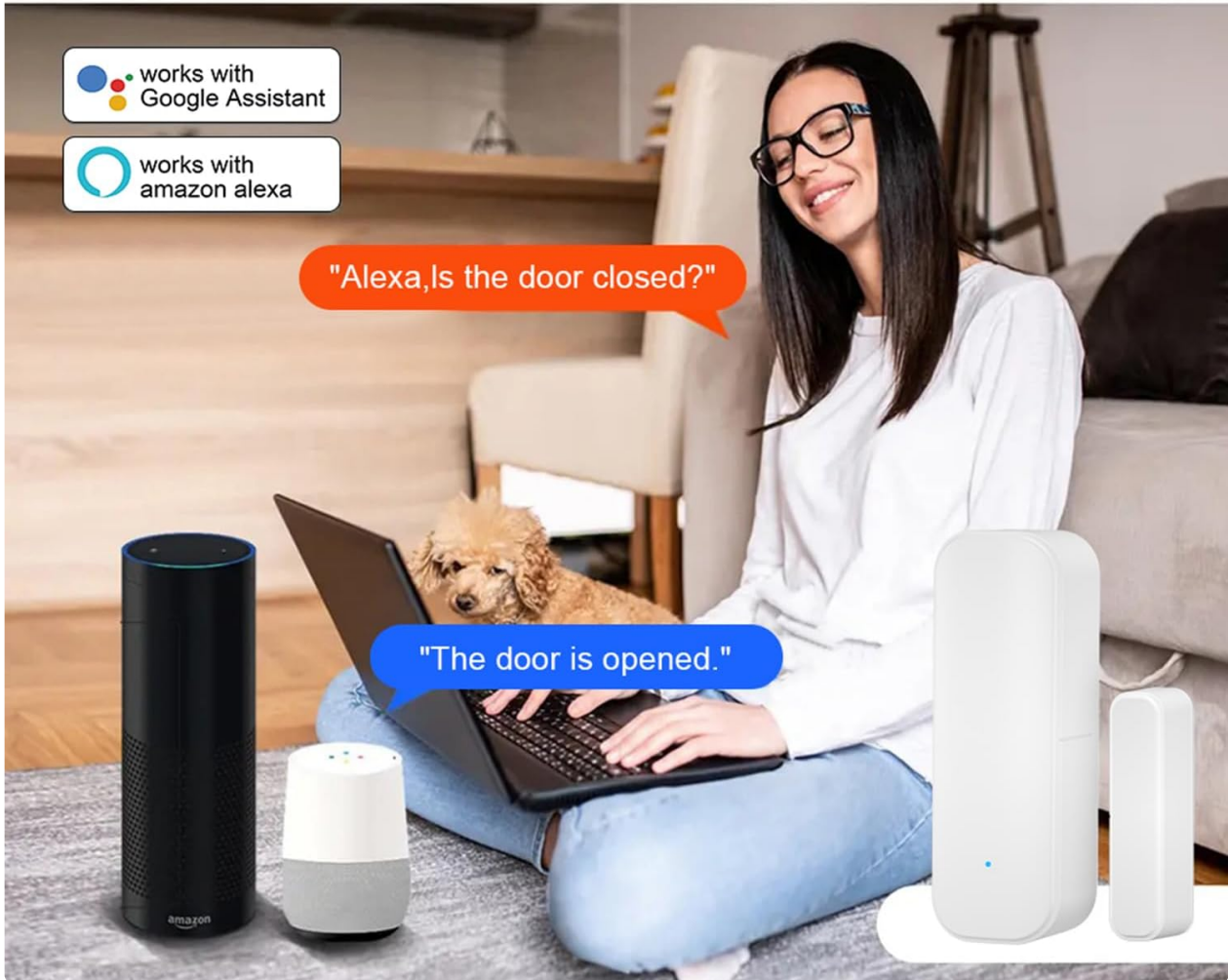


Image: Smartphone displaying real-time app notifications for door sensor open/close events.

## 5.2 Voice Control Integration

- Link your "Tuya Smart" or "Smart Life" account with Amazon Alexa or Google Assistant through their respective apps.
- Once linked, you can use voice commands to inquire about the sensor's status.

## Alarm Push & Status Record

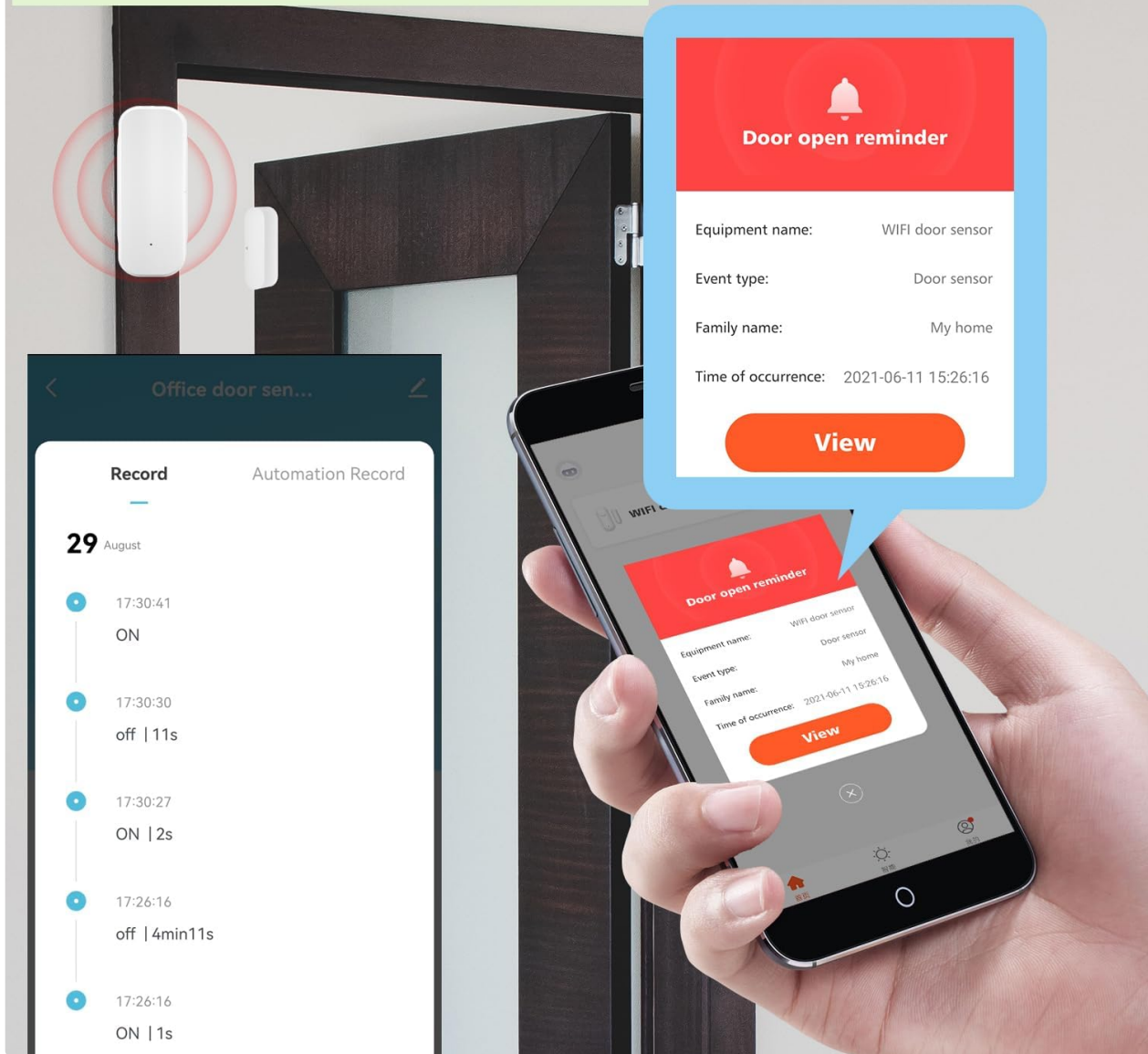


Image: Voice control setup with Amazon Alexa and Google Assistant.

### 5.3 Smart Automation

- Within the "Tuya Smart" or "Smart Life" app, navigate to the automation section.
- Create custom scenarios where the door/window sensor acts as a trigger for other smart devices. For example, set smart lights to turn on when the sensor detects an open door.

# FAMILY SHARING CONTROL

Main account has the exclusive permissions,  
one click to share the permissions with the whole family.  
let the family enjoy the fun of smart life!



Image: Example of lighting automation triggered by the door sensor.

## 5.4 Family Sharing

- The main account holder can share device control and notifications with family members through the app.

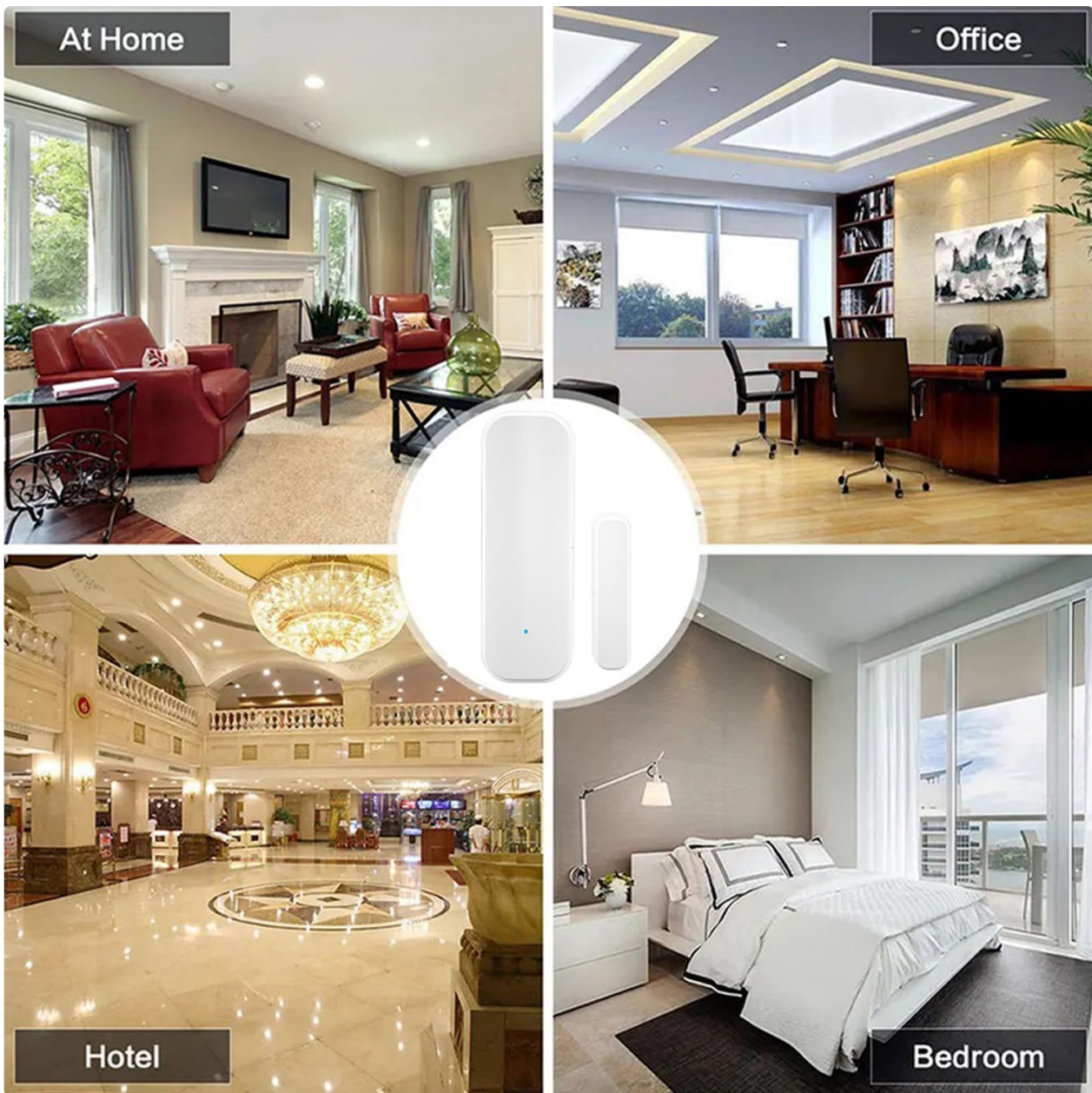


Image: Family sharing control for smart devices.

## 6. MAINTENANCE

### 6.1 Battery Replacement

- The sensor is powered by 2 AAA alkaline batteries.
- When the battery level is low, the app will send a notification.
- To replace batteries, gently slide the main sensor unit upwards from its mounting bracket to detach it. Open the battery compartment, replace the old batteries with new AAA batteries, and reattach the unit.

WiFi Temperature Humidity Sensor



Image: Easy battery replacement process.

## 6.2 Cleaning

- Wipe the sensor units with a soft, dry cloth. Do not use liquid cleaners or abrasive materials.

## 7. TROUBLESHOOTING

| Problem  | Possible Cause   | Solution   |
|--|--|--|
| Sensor not connecting to WiFi                  | Incorrect WiFi band (5G), weak signal, incorrect password.           | Ensure your router is broadcasting a 2.4GHz network. Move the sensor closer to the router. Double-check WiFi password. Reset the sensor and try pairing again.   |
| Delayed notifications                          | Network congestion, app not running in background, server delay.     | Check your home network speed and stability. Ensure the app has background refresh enabled. While some minor delays can occur due to cloud processing, significant delays may indicate network issues. |
| Sensor falling off after adhesive installation | Surface not clean/dry, adhesive not strong enough for surface type.  | Clean the surface thoroughly before applying adhesive. For rough or uneven surfaces, consider using the included screws for a more secure installation.  |
| Voice control not working                      | Alexa/Google Assistant skill not linked, device name not recognized. | Verify that the "Smart Life" or "Tuya Smart" skill is enabled and linked in your Alexa/Google Home app. Ensure the device name used in voice commands matches the name in the app.                     |
| Low battery warning                            | Batteries are running low.   | Replace the two AAA batteries as soon as possible to ensure continuous operation.  |

## 8. SPECIFICATIONS

- **Model Number:** 4P-door sensor
- **Power Source:** 2 x AAA Alkaline Batteries (included)
- **Voltage:** 3 Volts
- **Wireless Type:** 2.4GHz WiFi (IEEE 802.11b/g/n)
- **Control Method:** App (Tuya Smart / Smart Life)
- **Sensor Technology:** Contact Sensor
- **Mounting Type:** Door Mount (Adhesive or Screws)
- **Product Dimensions:** 2.76 x 0.98 x 0.79 inches (main unit)
- **Item Weight:** 8.1 ounces (for the 4-pack)
- **Smart Home Compatibility:** Amazon Alexa, Google Assistant
- **Manufacturer:** Gaoducash

## 9. WARRANTY AND SUPPORT

Gaoducash provides a 24-month warranty for this door detector. If you have any questions or require support, please contact Gaoducash customer service through the platform where you purchased the product.

## 10. PRODUCT VIDEO

Video: Official Gaoducash demonstration of the smart door sensor, including setup and functionality.