

Geloo CX8150

Geloo 85MM Boat RPM Tachometer Gauge (Model CX8150) Instruction Manual

INTRODUCTION

This manual provides detailed instructions for the installation, operation, and maintenance of your Geloo 85MM Boat RPM Tachometer Gauge. Please read this manual thoroughly before installation and use to ensure proper function and longevity of the product.

PRODUCT OVERVIEW VIDEO

Your browser does not support the video tag.

Video 1: Geloo 85MM RPM Tachometer Gauge Overview. This video demonstrates the physical characteristics of the Geloo tachometer, including its waterproof capabilities and backlight color options. (Duration: 0:44)

PRODUCT FEATURES

- **Wide Compatibility:** This tachometer is designed to be compatible with various RPM sensors and is suitable for a broad range of vehicles and machinery, including cars, trucks, boats, diesel generator engines, gasoline engines, construction machinery, and agricultural machinery.
- **Durable Construction:** Manufactured with a 316 stainless steel bezel, PVC, ABS, and curved glass, ensuring high quality and stable performance.
- **IP67 Waterproof and Anti-Fog:** Features an IP67 waterproof rating and anti-fog curved glass, allowing for clear data readability and normal operation even in harsh, humid, or acidic environments.
- **Easy Installation:** Designed for straightforward installation, requiring an 85mm (3 3/8") panel opening and a 55mm clearance behind the panel. The secure harness connector ensures proper function even under strong vibration.
- **RPM Range and Voltage:** Reads RPM from 0 to 6,000. Operates on 9-32V power systems and is compatible with 4, 6, 8, 10, or 12 cylinder gas-powered engines.
- **Multi-Color Backlight:** Features seven backlight colors (red, green, blue, white, yellow, cyan, purple) with an illuminated red needle for clear visibility at night. The backlight color can be changed manually or set to automatically cycle.



Figure 4: Durability Features. This image highlights the dustproof and IP67 waterproof capabilities of the tachometer, ensuring reliable performance in various conditions.

SPECIFICATIONS

Attribute	Value
Brand	Geloo
Model Number	CX8150
Material	Acrylonitrile Butadiene Styrene (ABS), Glass, Stainless Steel
Item Dimensions (L x W x H)	4.5 x 4.5 x 3.11 inches
Item Weight	0.5 Pounds
Number of Items	1
RPM Range	0-6000 RPM
Operating Voltage	9-32V
Panel Opening Size	85mm (3 3/8")

Attribute	Value
Backlight Colors	Red, Green, Blue, White, Yellow, Cyan, Purple
Waterproof Rating	IP67

Product Dimension

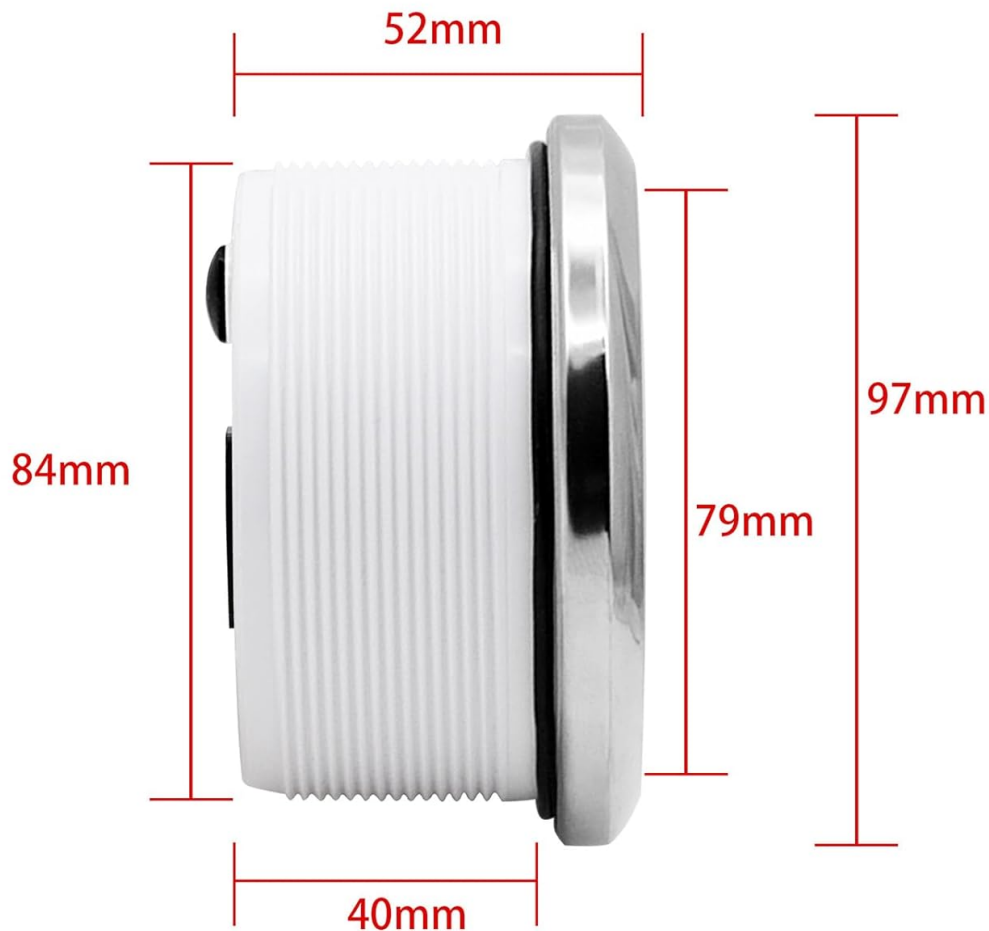


Figure 5: Product Dimensions. A detailed diagram illustrating the measurements of the tachometer gauge for installation planning.

INSTALLATION INSTRUCTIONS

Follow these steps for proper installation of your Geloo Tachometer Gauge:

- 1. Prepare the Mounting Hole:** To install the gauge, you will need to create a circular opening in your panel. The required diameter for this hole is 85mm (3 3/8 inches). Ensure there is at least 55mm of clear space behind the panel for the gauge's body and wiring.
- 2. Insert the Gauge:** Carefully insert the tachometer gauge into the prepared hole from the front of the panel.
- 3. Secure the Gauge:** Use the provided mounting hardware (typically a retaining ring and nuts) to secure the gauge firmly in place from the back of the panel.
- 4. Wiring Connections:** Connect the wiring harness to the back of the gauge. Refer to the wiring diagram below for correct connections. The harness connector is designed to snap securely, providing a stable connection even under vibration.

Wiring Connections

Connect the wires as follows:

- **Black Wire:** Connect to Ground (-)
- **Red Wire:** Connect to 9-32VDC Power (+)
- **Blue Wire:** Connect to RPM Signal Input
- **Yellow Wire:** Connect to Backlight Power (+)

Ensure all connections are secure and insulated to prevent short circuits.



Figure 1: Wiring Diagram. This diagram illustrates the necessary electrical connections for the tachometer. Ensure correct polarity and signal wire connection for accurate readings.

Easy Installation



Figure 2: Example Installation. The image shows the tachometer gauge properly installed on a boat dashboard, demonstrating its flush fit and clear visibility.

OPERATING INSTRUCTIONS

Once installed and powered, the tachometer will display the engine's RPM. The digital display at the bottom shows accumulated operating hours (H).

Backlight Color Adjustment

The tachometer features multiple backlight colors. To change the backlight color:

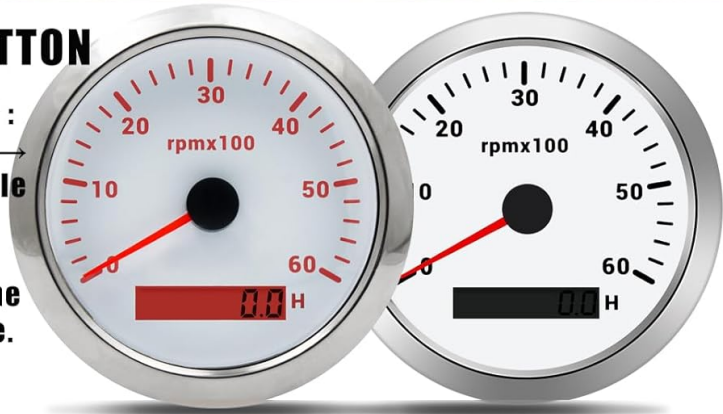
1. Locate the small button on the back of the gauge (refer to Figure 3).
2. **Short Press:** Briefly press the button to cycle through the available backlight colors: Red (default) → Green → Blue → White → Yellow → Cyan → Purple → Automatic cycle.
3. **Automatic Mode:** In automatic mode, the backlight color will switch automatically every 1 minute.

Auto Mode + Multiple Backlight Colours

SHORT PRESS THE BUTTON

To change the backlight color :
red (default) → green → blue →
white → yellow → cyan → Purple
→ (automatic).

Tips: Automatically switch the
backlight color every 1 minute.



WORK



UNWORK

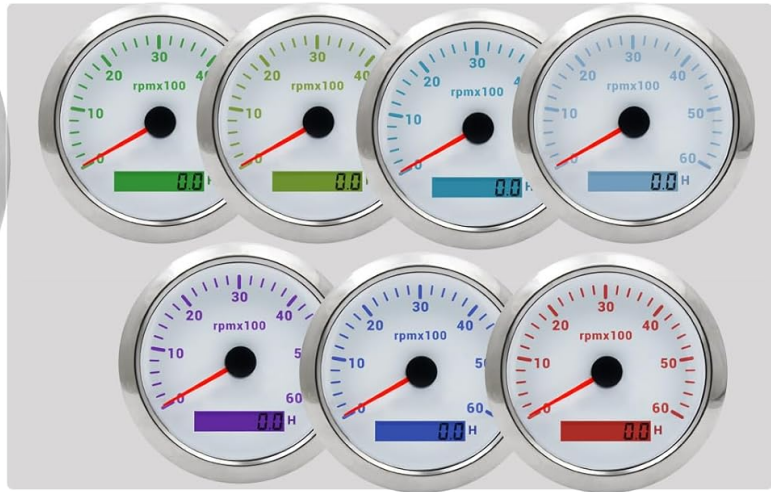


Figure 3: Backlight Control. This image highlights the button on the back of the gauge used to change backlight colors and illustrates the different color options.

MAINTENANCE

The Geloo Tachometer Gauge is designed for durability and requires minimal maintenance. To ensure optimal performance and longevity:

- **Cleaning:** Wipe the gauge's front face with a soft, damp cloth. Avoid abrasive cleaners or solvents that could damage the curved glass or bezel.
- **Inspection:** Periodically check the wiring connections for any signs of corrosion or looseness. Ensure the gauge remains securely mounted in the panel.
- **Environmental Protection:** While the gauge is IP67 waterproof and anti-fog, prolonged exposure to extreme conditions beyond its design specifications should be avoided.

TROUBLESHOOTING

If you encounter issues with your tachometer, consider the following common troubleshooting steps:

- **No Power/Display:**
 - Check the power (red wire) and ground (black wire) connections. Ensure they are securely connected and receiving the correct voltage (9-32V).

- Verify that the vehicle's battery is charged and providing adequate power.
- **Incorrect RPM Reading:**
 - Ensure the RPM signal wire (blue wire) is correctly connected to the engine's tachometer output or ignition coil.
 - Confirm that the tachometer is compatible with the number of engine cylinders (4, 6, 8, 10, 12 cylinder gas engines) for your vehicle. If issues persist, consult a professional.
- **Backlight Not Working/Changing:**
 - Check the backlight power wire (yellow wire) connection.
 - Ensure the button on the back of the gauge is functioning correctly when pressed.
- **Fogging on Display:**
 - While designed to be anti-fog, extreme temperature changes or prolonged exposure to high humidity might temporarily affect visibility. Allow the gauge to acclimate to ambient conditions. If persistent, check for proper sealing during installation.

If these steps do not resolve the issue, please contact Geloo customer support for further assistance.

WARRANTY AND SUPPORT

Geloo stands behind the quality of its products. Every gauge undergoes strict quality inspection before leaving the factory. For any questions regarding the product, installation, or troubleshooting, please contact Geloo customer support. Refer to your purchase documentation or the official Geloo website for specific warranty terms and contact information.