

## VEVOR Portable Monocrystalline Solar Panel

# VEVOR 200W Portable Monocrystalline Solar Panel

### INSTRUCTION MANUAL

Model: Portable Monocrystalline Solar Panel | Brand: VEVOR

## 1. Introduction

Thank you for choosing the VEVOR 200W Portable Monocrystalline Solar Panel. This foldable solar charger is designed to provide efficient and stable power for various applications, including power stations, camping, hiking, and off-grid scenarios. With a high energy conversion rate and durable construction, it offers a reliable energy solution for your portable power needs. Please read this manual thoroughly before use to ensure proper operation and safety.

## 2. Safety Instructions

- Do not attempt to modify or disassemble the solar panel. Unauthorized modifications can be dangerous and will void the warranty.
- Handle the solar panel with care. Avoid dropping or subjecting it to strong impacts.
- Ensure all connections are secure and correct before operating the device. Incorrect wiring can cause damage or injury.
- Keep the solar panel away from open flames, flammable liquids, and excessive heat sources.
- Do not immerse the solar panel in water, despite its IP67 rating. While resistant to splashes and dust, prolonged submersion is not recommended.
- Keep out of reach of children and pets.
- In case of damage, do not use the solar panel. Contact customer support for assistance.

## 3. Package Contents

- 1 x VEVOR 200W Portable Monocrystalline Solar Panel
- 1 x MC4 Adapter Cable 4-in-1

- 1 x User Manual

## 4. Product Features

---

- **200W High-Efficiency Output:** Delivers 200W power with a conversion rate greater than 23%, ensuring quick charging.
- **Foldable and Portable Design:** Weighing 16.59 lbs (7.52 kg) with a compact folded size of 25.24 x 21.06 x 1.14 inches, it is ideal for travel and outdoor activities.
- **Wide Compatibility:** Equipped with a built-in MC4 cable and a 4-in-1 MC4 adapter cable, compatible with most power stations.
- **Superior Energy Conversion:** Utilizes high-transmittance monocrystalline solar cells for over 23% energy conversion efficiency.
- **Reliable & Durable Construction:** Features an IP67 waterproof ETFE surface, designed to withstand extreme temperatures from -10°C to 65°C (optimal at 25°C).

## 5. Setup

---

### 5.1 Unfolding the Solar Panel

Carefully unfold the solar panel completely. The panel is designed to lay flat or be propped up using its integrated kickstands.

# FOLDABLE & PORTABLE

Emergency power supply, power on the go



House



RV



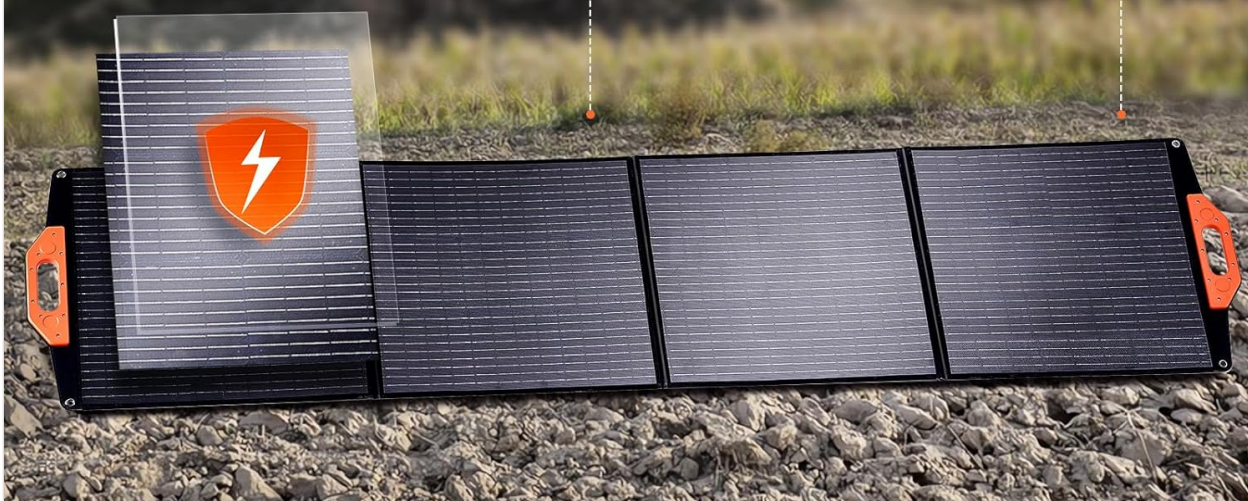
Camping



Hiking



Fishing



*Image: The VEVOR 200W Portable Solar Panel fully unfolded, ready for deployment.*

## 5.2 Positioning for Optimal Sunlight

Locate an area with direct sunlight. Use the adjustable kickstands on the back of the panel to angle it towards the sun for maximum exposure. Adjust the angle throughout the day as the sun's position changes.



# STAND UP TO TOUGH WEATHER

Stable power supply, always on standby



*Image: The solar panel positioned outdoors with its integrated kickstands, demonstrating optimal sun angle.*

## 5.3 Connecting to Devices

The solar panel features a built-in MC4 cable and includes a 4-in-1 MC4 adapter cable for broad compatibility. Connect the MC4 cable from the solar panel to the appropriate input port on your power station or device using the provided adapter if necessary. Ensure connections are firm.



# EASY INSTALLATION & WIRING

Green solar power, ready for demands



*Image: An illustration detailing the various connection types and compatibility with different power sources.*

## 5.4 Setup Demonstration Video

Your browser does not support the video tag.

*Video: A seller demonstrates the ease of setting up the VEVOR 200W Portable Solar Panel and connecting it to a battery bank.*

## 6. Operating Instructions

### 6.1 Charging Devices

Once the solar panel is set up and connected to your power station or device, it will begin converting sunlight into electricity. Most compatible power stations will display the input wattage. Ensure your device is turned on and ready to receive a charge.



Item Model Number: **S200**

Operating Voltage: **18V**

Operating Current: **10.55A**

Product Dimensions:

**Expanded: 94.49 x 20.98 inch / 2400 x 533 mm**

**Folded: 25.24 x 21.06 x 1.14 inch / 641 x 535 x 29 mm**

Accessories:

**1 x DC Adapter Cable ,1 x User Manual**

Maximum Power: **200W**

Conversion Efficiency: **>23%**

Product Weight: **16.59 lbs / 7.52 kg**

*Image: The solar panel in various use cases, highlighting its versatility for charging devices in different environments.*

## 6.2 Charging Demonstration Video

Your browser does not support the video tag.

*Video: A seller demonstrates the VEVOR 200W Portable Solar Panel charging an Ecoflow battery bank, showing the wattage input.*

## 7. Maintenance

- **Cleaning:** Regularly wipe the solar panel surface with a soft, damp cloth to remove dust, dirt, or debris. Avoid abrasive cleaners or harsh chemicals.
- **Inspection:** Periodically check the cables and connectors for any signs of wear, damage, or corrosion. Ensure they are securely attached.
- **Storage:** When not in use, fold the solar panel and store it in a dry, cool place away from direct sunlight and extreme temperatures.
- **Environmental Conditions:** While designed for outdoor use, prolonged exposure to severe weather conditions (e.g., heavy snow, hail, strong winds) should be avoided to maximize lifespan.

## 8. Troubleshooting

- **No Power Output:**
  - Ensure the solar panel is in direct sunlight and not shaded.
  - Check all cable connections for proper seating and integrity.
  - Verify that the connected power station or device is turned on and configured to accept solar input.
- **Low Power Output:**
  - Adjust the angle of the solar panel to face the sun directly.
  - Clean the surface of the solar panel to remove any obstructions.
  - Cloudy weather or low sun angle will naturally result in lower output.
  - Ensure the ambient temperature is within the optimal operating range (around 25°C).
- **Connection Issues:**
  - Confirm that the correct adapter cable is being used for your specific power station.
  - Inspect connectors for damage or bent pins.

## 9. Specifications

Specification	Value
Brand	VEVOR
Material	Monocrystalline Silicon, ETFE
Product Dimensions (Expanded)	94.49"L x 0.39"W x 21.06"H (2400 x 10 x 535 mm)
Product Dimensions (Folded)	25.24"L x 21.06"W x 1.14"H (641 x 535 x 29 mm)
Item Weight	16.59 lbs (7.52 kg)
Maximum Power	200 Watts
Efficiency	>23%
Output Voltage	18 Volts
Operating Current	10.55A
Upper Temperature Rating	65 Degrees Celsius
Special Feature	Lightweight Design
Waterproof Rating	IP67

Image: Detailed product dimensions and specifications for the VEVOR 200W Portable Solar Panel.



Item Model Number: **S200**

Operating Voltage: **18V**

Operating Current: **10.55A**

Product Dimensions:

**Expanded: 94.49 x 20.98 inch / 2400 x 533 mm**

**Folded: 25.24 x 21.06 x 1.14 inch / 641 x 535 x 29 mm**

Accessories:

**1 x DC Adapter Cable ,1 x User Manual**

Maximum Power: **200W**

Conversion Efficiency: **>23%**

Product Weight: **16.59 lbs / 7.52 kg**

## 10. Warranty and Support

VEVOR provides technical support and e-warranty services. For detailed warranty information and support, please visit the official VEVOR website at [www.vevor.com/support](http://www.vevor.com/support). Please retain your purchase receipt for warranty claims.